

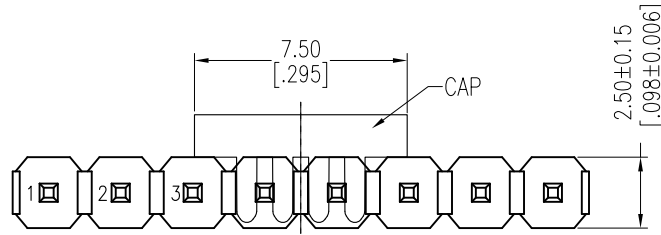
HSF

NOTES:

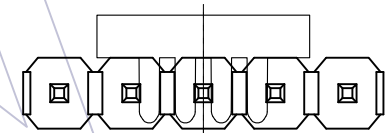
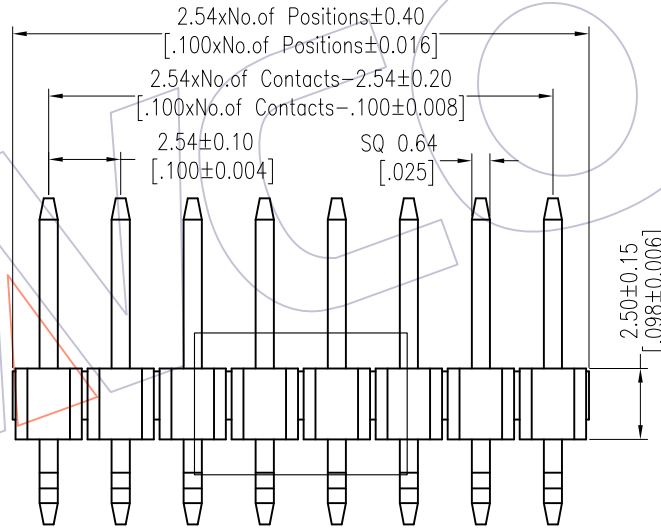
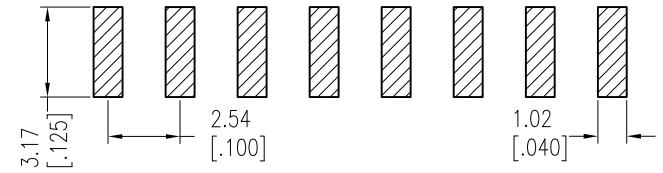
Rated Current:3.0AMP.
 Contact Resistance:20mΩ Max.
 Withstand Voltage:1000V AC/DC
 Insulation Resistance:1000MΩ Min.
 Operation Temperature:-40°C to +105°C

Contact Material:Brass
 Contact Plating:Au or Sn Over Ni
 Insulator Material:PA9T+33%G.F UL94V-0 BK

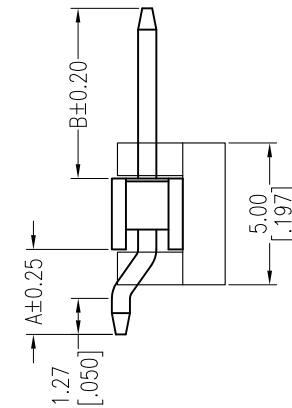
Recommended P.C.B Layout (Top Side)
 (PCB BOARD TOLERANCE±0.05)



Dual Numders



Odd Number



Ordering Information

1125-11 XX XX Z XXX C R XX \triangle A1

| | | | | | |
|-------------|--|--------------------------------|--------------------|---|------------|
| No. of Pins | Contact Plating | Pin Length | Insulator Material | Packing | Series No. |
| 02-40 | G0=Gold Flash G3=10u"Gold G4=15u"Gold G5=30u"Gold S0=Gold Flash/Tin S3=10u"Gold/Tin S4=15u"Gold/Tin S5=30u"Gold/Tin SN=Tin SM=Matte Tin | L=A+B+2.8 Standard:118=11.8 | C=PA9T | T=Tube P=Tube+CAP R=Tape & Reel+CAP | 01-99 |

| Item | Pin Length | A | B | Mating |
|-----------|------------|------|------|-----------|
| Standard | 11.80 | 3.00 | 6.00 | 2171 2185 |
| Alternate | | | | |

| REV | DATE | MODIFICATION DESCRIPTION | CHANGE | OPERATION | DRAW | DATE | SCALE | Fit | PART NO. |
|-----|------------|--------------------------|----------------|-------------|---------|------------|-------|-----|-----------------------------------|
| | | | | x.X ±0.40 | Ruipeng | 2018/01/22 | UNIT | mm | 1125-11XXXXZXXXCRXX |
| A1 | 2018/01/22 | Modify P/N | \triangle A1 | x.XX ±0.25 | CHECK | DATE | SIZE | A4 | TITLE: |
| A0 | 2012/05/17 | NEW | ----- | x.XXX ±0.15 | APPROVE | DATE | SHEET | 1/1 | PH2.54 SINGLE ROW 90°SMT H=2.5 |
| | | | | Angle ± 3' | | | PROJ. | | Customer NO. |
| | | | | DIM TOL | | | | | |

WCON
 Http: www.wcon.com

WCON-Dongguan
 Tel: +86 769 85358920
 Fax: +86 769 85358915
 E-mail: sales@wcon.com

WCON-Kunshan
 Tel: +86 512 57468408
 Fax: +86 512 57468468
 E-mail: salesks@wcon.com