


承 認 書

SPECIFICATION FOR APPROVAL

| | | | |
|-------------------|-----|--------------------------------------|----------------|
| 客 戶 : CUSTOMER | 金飛越 | 承認圖號 : APP. NO. | D170090836 |
| 系 列 : SERIES | SH | 使用溫度範圍 : OPERATION TEMP. RANGE | -40/-25~+105°C |

| | |
|--|------------------------|
| 本公司料號 VENDOR'S PART NO. | 貴公司料號 BUYER'S PART NO. |
| KSH107M016S1A5C11K KSH226M050S1A5C11K KSH477M025S1A5G11K KSH475M400S1A5G11K | |

| | | |
|----------------------------------|--|-------------------------------------|
| 貴公司承認印 BUYER'S APPROVAL STAMP | 智寶電子(東莞)有限公司 TEAPO ELECTRONICS (Dongguan) CORPORATION | |
| |  | |
| | APPROVED BY: 高 2017.09.08 維琴 | TESTED BY: 許 2017.09.08 洪梅 |

智寶電子股份有限公司
新北市汐止區新台五路一段 81 號 13 樓之 3

Teapo Electronics Corporation
13F-3, No.81, Sec. 1, Xintai 5th Rd.
Xizhi Dist., New Taipei City 22101, Taiwan.
Tel: +886-2-66169888 FAX: +886-2-66169666

智宝电子(东莞)有限公司
广东省东莞市塘厦镇高丽工业区高丽一路
6A2、6A3 号

Teapo Electronic (Dongguan) Co.,Ltd.
Address: 6A3.6A2,Gaoli 1st Rd. Gaoli Ind. Zone, Tangxia Town,
Dongguan City, Guangdong 523726, China.
Tel: +86-769-8791-4676 Fax: +86-769-8791-4770

智宝电子(苏州)有限公司
苏州市高新区长江路 179 号 2 号门三楼

Teapo Electronic (Suzhou) Co., Ltd
3F,No.2,No.179, South Changjiang Rd., High New District, Suzhou
City, Jiang Su, China.
Tel : +86-512-6636-6868 Fax :+86-512-6636-5556

Table of specification and characteristics

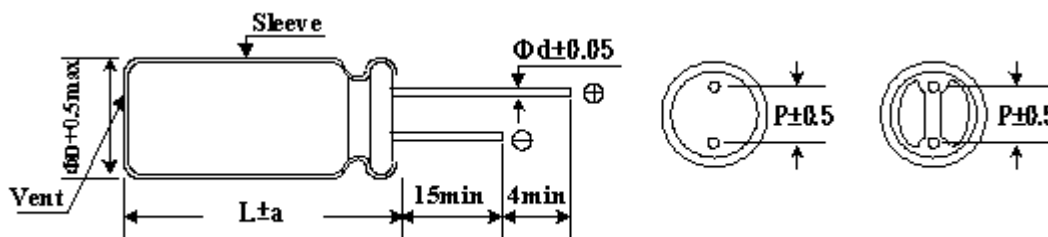
| NO | 料 號 Part NO | 靜電容量 CAP (uF) 120HZ 20°C | 工作 電壓 WV | 損失角 DF(%) (MAX) 120HZ 20°C | 洩漏電流 LC(μA) (MAX) 20°C | 濾波電流 RC(mArms) (MAX) 120HZ 105°C | 負荷壽命 Load Life (Hrs) 105°C | 尺 寸 Dimensions(mm) | | |
|----|--------------------|-----------------------------------|----------------|--|---------------------------------|--|-------------------------------------|-----------------------|----|-----|
| | | | | | | | | φD | L | P |
| 1 | KSH107M016S1A5C11K | 100 | 16 | 18 | 16 | 130 | 2000 | 5 | 11 | 2.0 |
| 2 | KSH226M050S1A5C11K | 22 | 50 | 12 | 11 | 75 | 2000 | 5 | 11 | 2.0 |
| 3 | KSH477M025S1A5G11K | 470 | 25 | 16 | 117.5 | 300 | 2000 | 8 | 11 | 3.5 |
| 4 | KSH475M400S1A5G11K | 4.7 | 400 | 20 | 66.4 | 45 | 2000 | 8 | 11 | 3.5 |

I . Scope (范围)

This standard defines characteristics and dimensions for aluminum electrolytic capacitors named SH series is miniature general purpose product.

(本标准规定了小型化通用产品的铝质电解电容 SH 系列的特性和尺寸)

II . Diagram of Dimensions (尺寸图)



*Safety vent only for :Dimension ≥ 6.3×11 仅针对于防爆阀: 尺寸 ≥ 6.3×11

| | | | | | | | | |
|--------------------------|-----|-----|-----|-----|-----|-----|-----|------|
| Diameter 直径(φ D) | 5 | 6.3 | 8 | 10 | 13 | 16 | 18 | 22 |
| Lead space 导针距离(P) | 2.0 | 2.5 | 3.5 | 5.0 | 5.0 | 7.5 | 7.5 | 10.0 |
| Lead diameter 导针直径(φ d) | 0.5 | 0.5 | 0.6 | 0.6 | 0.6 | 0.8 | 0.8 | 0.8 |
| a | 1.5 | 1.5 | 1.5 | 1.5 | 2.0 | 2.0 | 2.0 | 2.0 |

III . Characteristics (特性)

Standard test condition (标准试验条件)

Unless otherwise specified all tests shall be performed at, or referred to, an ambient temperature of 20°C and a relative humidity not greater than 60%.

(所有的试验应在环境温度20°C和相对湿度小于等于60%的条件下进行, 除非另有规定)

Operating Temperature Range(工作温度范围)

| | |
|------------|------------|
| 6.3~100VDC | -40~+105°C |
| 160~500VDC | -25~+105°C |

1. Electrical characteristics(电气特性)

(1). Rated Voltage and Surge Voltage(额定电压和突破电压)

WV: Working Voltage 工作电压(VDC)

SV: Surge Voltage 突破电压(V)

| | | | | | | | | | | | | | | | | |
|----|-----|----|----|----|----|----|----|-----|-----|-----|-----|-----|-----|-----|-----|-----|
| WV | 6.3 | 10 | 16 | 25 | 35 | 50 | 63 | 100 | 160 | 200 | 250 | 300 | 350 | 400 | 450 | 500 |
| SV | 8 | 13 | 20 | 32 | 44 | 63 | 79 | 125 | 200 | 250 | 300 | 350 | 400 | 450 | 500 | 550 |

(2). Leakage Current(漏电流)

The maximum leakage current is specified in the following formula after DC working voltage applied .

(印加直流工作電壓后的最大泄漏電流值規定在下面的公式中)

6.3~100WV $I=0.01CV$ or $3 (\mu A)$ for 2 minutes

whichever is greater. 2 分鐘后電流較大

160~450WV $I=0.03CV + 10 (\mu A)$ for 2 minutes 2 分鐘

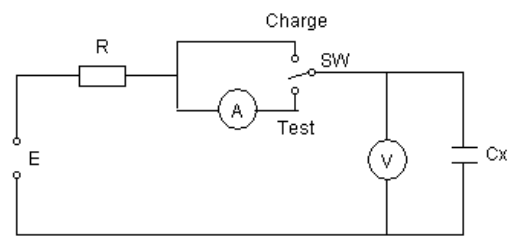
500WV $I=0.04CV+100(\mu A)$ for 2 minutes 2 分鐘

where I: Leakage Current 漏电流 (μA)

C: Nominal Capacitance 标称容量 (μF)

V: Rated Voltage 额定电压(V)

Measurement circuit 測試電路



(3). Capacitance Tolerance(容量允許誤差)

Capacitance tolerance should be within the range of $\pm 20\%$ which is measured at 120Hz/20°C

(在 120Hz/20°C 条件下测量时，容量允許誤差应当在 $\pm 20\%$ 范围之内)

(4). Dissipation Factor(损失角)

Dissipation Factor at 120Hz/ 20°C shall not exceed the values given in the table below.

(在 120 hz / 20°C 条件下的 DF 值不应超过如下表中给出的值)

| | | | | | | | | | | |
|-------|-----|----|----|----|----|----|--------|---------|---------|-----|
| WV | 6.3 | 10 | 16 | 25 | 35 | 50 | 63~100 | 160~250 | 300~450 | 500 |
| DF(%) | 26 | 22 | 18 | 16 | 14 | 12 | 10 | 15 | 20 | 25 |

Note: Above DF specifications shall be 2% added for every 1000uF capacitor exceeding 1000uF.

從 1000uF 開始，容量每增加 1000uF, DF 增加 2%

(5). Low Temperature Characteristics(低温特性)

The ratio of impedance at -25°C/+20°C and -40°C/+20°C of the capacitor shall be less than the following value at 120Hz.

(电容器在-25°C/+20°C and -40°C/+20°C 的阻抗比，应小于在 120Hz 下的值，如下所示：)

| | | | | | | | |
|---------------------|-----|----|----|--------|---------|---------|-----|
| WV | 6.3 | 10 | 16 | 25~100 | 160~250 | 300~450 | 500 |
| Z(120Hz) | | | | | | | |
| Z(-25°C) / Z(+20°C) | 4 | 3 | 2 | 2 | 4 | 4 | 6 |
| Z(-40°C) / Z(+20°C) | 8 | 6 | 4 | 3 | - | - | - |

(6). Multiplier for Ripple Current(纹波电流乘数)

Frequency coefficient 频率系数

| Frequency 频率 (Hz) | 120 | 300 | 1K | 10K |
|--------------------------------|------|------|------|------|
| 6.3~100V Below/小于 68 μ F | 1.00 | 1.30 | 1.57 | 2.00 |
| 6.3~100V 100~470 μ F | 1.00 | 1.23 | 1.34 | 1.50 |
| 6.3~100V 471~22000 μ F | 1.00 | 1.10 | 1.13 | 1.15 |
| 60~450V ALL Cap所有容量 (μ F) | 1.00 | 1.25 | 1.40 | 1.60 |
| 500V ALL Cap所有容量 (μ F) | 1.00 | 1.05 | 1.10 | 1.15 |

2. Mechanical Characteristics(机械特性)

Lead Pull Test(導針拉力測試)

Capacitors shall be with stand the pull test shown in the following table.

(電容器的導針需要能承受下表所示的拉力測試)

| Lead diameter (mm) | Load (Kg) | Test time (sec) |
|-----------------------|--------------|---|
| $d \leq 0.5$ | 0.5 | 30 $\begin{matrix} +5 \\ -0 \end{matrix}$ |
| $0.5 < d \leq 0.8$ | 1.0 | 30 $\begin{matrix} +5 \\ -0 \end{matrix}$ |
| $0.8 < d \leq 1.2$ | 2.5 | 30 $\begin{matrix} +5 \\ -0 \end{matrix}$ |

3. Endurance characteristics(耐久特性)

(1). Load Life(負荷壽命)

To put capacitors into the oven which is staying at $105 \pm 2^\circ\text{C}$, then to add rated voltage in the capacitors. This experiment will be lasted for $2000 + 12 / - 0$ hours. We will examine the electric characteristics after getting them cooled down to room temperature. The values must not be over those on following table.

(將電容放入烤箱內保持在 $105 \pm 2^\circ\text{C}$, 然後增加電容的額定電壓。此實驗將持續 $2000 + 12 / - 0$ 小時, 在電容放在室溫下冷卻後檢查電氣特性。不能超過如下表所示的數值)

| | |
|-------------------------|---|
| Capacitance Change 容量變化 | Within $\pm 20\%$ of initial value 在初始值的 $\pm 20\%$ 以內 |
| Dissipation Factor 損失角 | 200% or less of initial specified value 200% 或 小於 初始規定值 |
| Leakage Current 漏電流 | Initial specified value or less 初始規定值 或 更小 |

(2). Shelf Life(無負荷壽命)

The following specifications shall be satisfied when the capacitors are restored to 20°C after exposing them at $105 \pm 2^\circ\text{C}$ for $1000 + 12 / - 0$ hours without voltage applied.

(當電容器在無電壓印加的情況下在 $105 \pm 2^\circ\text{C}$ 放置 $1000 + 12 / - 0$ 小時之後, 恢復存放在 20°C 條件時, 應滿足以下規格)

| | |
|-------------------------|--|
| Capacitance Change 容量变化 | Within $\pm 20\%$ of initial value 在初始值的 $\pm 25\%$ 以内 |
| Dissipation Factor 损失角 | 200% or less of initial specified value 200%或小于初始规定值 |
| Leakage Current 漏电流 | Initial specified value or less 初始规定值或更小 |

(3). Solderability Test(焊锡性试验)

The following specifications shall be satisfied when the lead wires are tested in solder bath at $245\pm 5^{\circ}\text{C}$ for 2.5 ± 0.5 seconds, more than 95% of the terminal surface shall be covered with new solder.

(当导针在 $245\pm 5^{\circ}\text{C}$ 的焊锡槽中试验 2.5 ± 0.5 秒后, 应当满足以下规格, 95%以上的端子表面要被新焊料覆盖)

(4). Solder Heat Resistance Test(焊锡耐热试验)

The following specifications shall be satisfied when the lead wires are tested in solder bath at $275+2/-0^{\circ}\text{C}$ for 20 ± 0.5 seconds.

(当导针在 $275+2/-0^{\circ}\text{C}$ 的焊锡槽中试验 20 ± 0.5 秒后, 应当满足以下规格)

| | |
|----------------------------|---|
| Capacitance Change 容量变化 | $\leq \pm 5\%$ of the initial value 小于等于初始值的 $\pm 5\%$ |
| Dissipation factor 损失角 | \leq Initial specified value 小于等于初始规格值 |
| Leakage Current 漏电流 | \leq Initial specified value 小于等于初始规格值 |

IV. Mounting(安装)

The paper separators and the electrolytic-conductive electrolytes in a non-solid aluminum electrolytic capacitor is flammable.

(非固态电容器内的电解纸和电解液是易燃的)

Leaking electrolyte on a PC board can gradually erode the copper traces, possibly causing smoke or burning by short-circuiting the copper traces.

(PC板上的漏液可能逐渐侵蚀铜丝,很可能由于铜丝短路导致冒烟或燃烧)

Verify the following points when designing a PC board.

(在设计 PC 板时需验证以下要点:)

(1) Provide the appropriate hole spacing on the PC board to match the terminal spacing of the capacitor.

(在 PC 板上保留适当的孔距以匹配电容器的端子间距)

(2) Make the following open space over the vent so that the vent can operate correctly.

(在防爆阀的上方保留适当空间, 以便防爆阀可以正常工作)

Case diameter 铝壳直径

$\phi 6.3$ to $\phi 13$ mm

$\phi 16$ to $\phi 35$ mm

$\phi 40$ mm 或以上 and up

Clearance 间隔

最小 2 mm minimum

最小 3 mm minimum

最小 5 mm minimum

(3) Do not place any wires or copper traces over the vent of the capacitor.

(电容器的防爆阀上方不要放置任何电线或铜丝)

- (4) Installing a capacitor with the vent facing the PC board needs an appropriate ventilation hole in PC board.

(在安装电容器时, 如果让防爆阀正对 PC 板, 则 PC 板上需要一个适当的通风孔)

- (5) Do not pass any copper traces beneath the seal side of a capacitor.

The trace must pass 1 or 2 mm to the side of the capacitor.

(电容器的封口方向不能有任何铜丝从下面通过, 该丝线必须通过時, 請至少預留 1 或 2 mm 的距離)

- (6) Avoid placing any heat-generating objects adjacent to a capacitor or even on the reverse side of the PC board.

(避免在电容器周围或 PC 板的背面放置任何发热的物体)

- (7) Do not pass any via holes or underneath a capacitor.

(不要经由任何小孔通过电容器或从电容器下面通过)

- (8) In designing double-sided PC boards, do not locate any copper trace under the seal side of a capacitor.

(设计双面 PC 板时, 不要在电容器的封口面放置任何铜丝)

- (9) The liquid aluminum electrolytic capacitor can't be reflow soldering, please contact us if you need to do that.

(液態鋁電解電容器不能進行迴流焊, 如需進行迴流焊請與我司聯繫)

V. Storage Condition(储存条件)

- (1) Aluminum Electrolytic Capacitors should not be stored in high temperatures or where there is a high level of humidity. The suitable storage condition is 5~35°C and less than 75% in relative humidity.

(铝电解电容器不应当储存在高温或高湿的条件下.合适的储存条件为 5~35°C,相对湿度低于 75%)

- (2) Aluminum Electrolytic Capacitors should not be stored in damp conditions such as water, saltwater spray or oil spray.

(铝电解电容器不应当储存在潮湿的条件下, 如水、盐水喷雾或油雾)

- (3) Do not store Aluminum Electrolytic Capacitors in an environment full of hazardous gas (hydrogen sulfide, sulfurous acid gas, nitrous acid, chlorine gas, ammonium, etc...).

(不要将铝电解电容器存储在一个充满有害气体的环境下(硫化氢、二氧化硫、亚硝酸、氯气、铵等...))

- (4) Aluminum Electrolytic Capacitors should not be stored under exposure to ozone, ultraviolet rays or radiation.

(铝电解电容器储存不应暴露在臭氧、紫外线辐射和射线中)

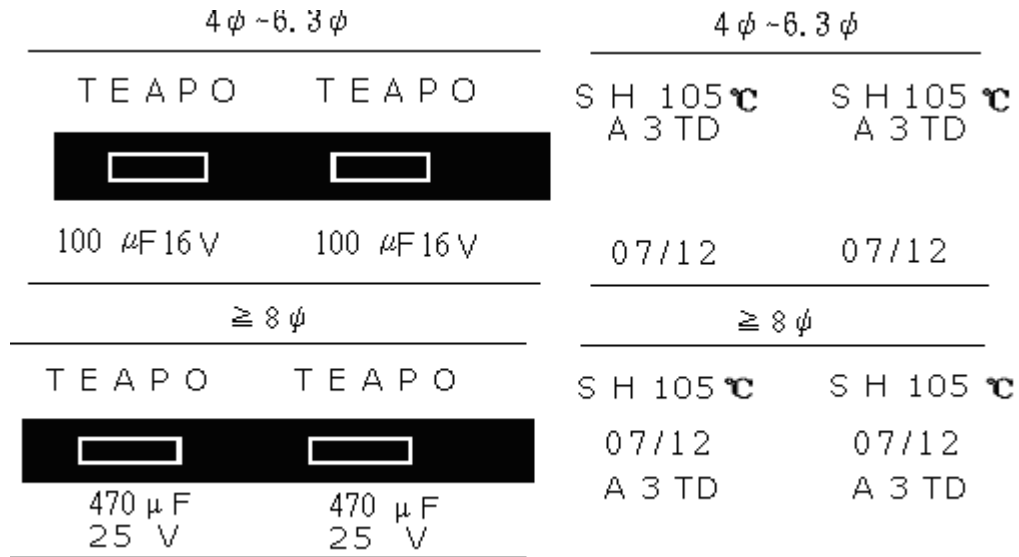
- (5) If a capacitor has been stored for more than one year under normal temperature (shorter if high temperature) and it shows increased leakage current, then a treatment by voltage application is recommended. The capacitor which hasn't been treated mustn't be used directly.

(如果电容器在正常温度下储存超过一年(如果高温条件下则缩短), 并且表现出漏电流上升, 那么建议

对电容器进行电压处理. 未被处理过的电容器不能直接使用)

VI. Marking(标识)

Marking on capacitor include 电容器上的标识包含:



⌘ TEAPO trademark 商标

⌘ Nominal capacitance 标称容量

⌘ Working voltage 工作电压

⌘ Polarity 极性

⌘ Sleeve material & vendor 胶管材质&厂商

⌘ Series No. 系列编号

⌘ Max operating temperature 最高工作温度

⌘ Date code 周期(MM/YY)

⌘ EC vendor 厂商

Remark: Date code numbering system. Date code is indicated manufactured date

备注: 周期编号系统, 周期是表示生产日期.

Manufactured year 生产年份

| | | | | | | | | |
|---------|------|------|------|------|------|------|------|------|
| Code 编码 | 10 | 11 | 12 | 13 | 14 | 15 | 16 | 17 |
| Year 年 | 2010 | 2011 | 2012 | 2013 | 2014 | 2015 | 2016 | 2017 |

Manufactured month 生产月份

| | | | | | | | | | | | | |
|---------|----|----|----|----|----|----|----|----|----|----|----|----|
| Month 月 | 01 | 02 | 03 | 04 | 05 | 06 | 07 | 08 | 09 | 10 | 11 | 12 |
| Code 编码 | 01 | 02 | 03 | 04 | 05 | 06 | 07 | 08 | 09 | 10 | 11 | 12 |

Manufactured Place 生产场所

| | |
|----------|------------------------|
| Code 编码 | A3 |
| Place 地点 | Made in Dong Guan 东莞製造 |

Sleeve Material 胶管材质

| | | |
|-------------|-----|-----|
| Code 编码 | T | C |
| Material 材料 | PET | PVC |

Sleeve Supplier(Made in Dongguan) 胶管厂商 (东莞製造)

| | | | | |
|-------------|-------|----------|----------|---------|
| Code 编码 | A | B | C | D |
| Supplier 厂商 | So Li | Yin Xing | Chi Yuan | Yun Lin |

*The above code descriptions are just examples, they haven't completely shown all sleeve suppliers

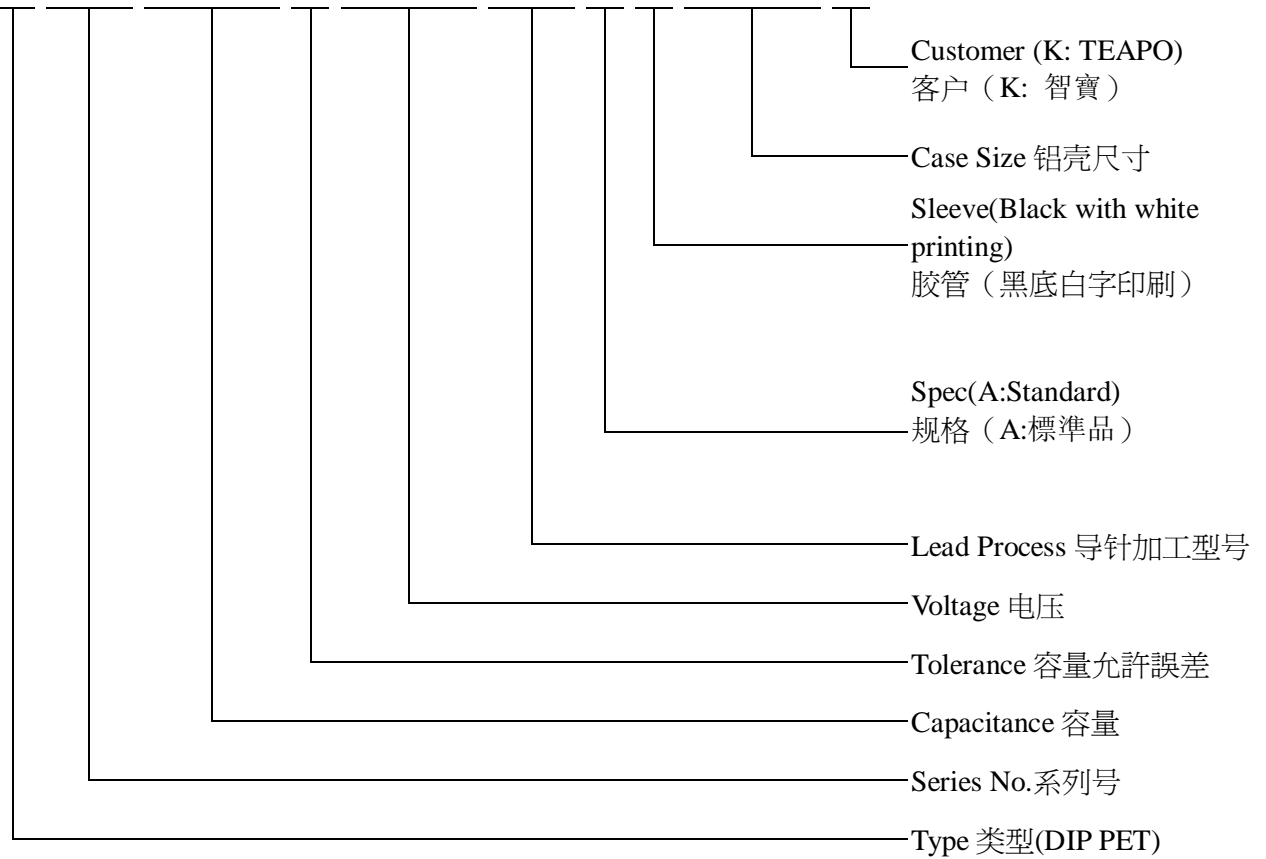
*以上代码描述仅为举例,并没有完全显示出所有胶管供应商。

VII. Catalog numbering(目录编码)

TEAPO SH TYPE (Part Number) TEAPO SH 类型 (料号说明)

1 2 3 4 5 6 7 8 9 10 11 12 13 14 15 16 17 18

K S H 1 0 7 M 0 1 6 S 1 A 5 C 1 1 K



PACKAGING SPECIFICATION (包装规格)

Miniature Aluminum Electrolytic Capacitors (小型化铝电解电容器)

For Bulk: Standard Cutting & Forming 针对散装: 标准切脚&成型

| Classification 分类标准 | Standard Bulk 标准散装 | | | | Cutting & Forming 切脚&成型 | | | | Min. ordering amount 最小订购数量 |
|------------------------|------------------------------|------------------|-------------------------------------|--|----------------------------|------------------|-------------------------------------|--|--------------------------------|
| | Case size 铝壳尺寸 D*L(mm) | Vinyl bag 乙烯袋 | inner box 内盒 289*168*279 (mm) | outer carton 外箱 355*297*290 (mm) | gross weight 毛重 (kg) | Vinyl bag 乙烯袋 | inner box 内盒 289*168*135 (mm) | outer carton 外箱 355*297*290 (mm) | |
| 4×5 | 2,000 | 24,000 | 48,000 | 13 | 2,000 | 20,000 | 80,000 | 20 | 25 |
| 4×7 | 2,000 | 20,000 | 40,000 | 11 | 2,000 | 16,000 | 64,000 | 17 | 25 |
| 5×5 | 2,000 | 20,000 | 40,000 | 12 | 2,000 | 16,000 | 64,000 | 18 | 25 |
| 5×7 | 2,000 | 16,000 | 32,000 | 13 | 2,000 | 16,000 | 64,000 | 23 | 25 |
| 5×11 | 1,000 | 12,000 | 24,000 | 13 | 1,000 | 10,000 | 40,000 | 22 | 25 |
| 6.3×5 | 2,000 | 16,000 | 32,000 | 11 | 2,000 | 10,000 | 40,000 | 16 | 20 |
| 6.3×7 | 2,000 | 12,000 | 24,000 | 10 | 2,000 | 10,000 | 40,000 | 15 | 20 |
| 6.3×11,6.3×15 | 1,000 | 10,000 | 20,000 | 14 | 1,000 | 7,000 | 28,000 | 17 | 20 |
| 8×7 | 500 | 10,000 | 20,000 | 14 | 500 | 6,500 | 26,000 | 16 | 15 |
| 8×9,8×11,8×12 | 500 | 7,500 | 15,000 | 17 | 500 | 4,000 | 16,000 | 18 | 15 |
| 8×14,8×15 | 500 | 5,000 | 10,000 | 12 | 500 | 3,000 | 12,000 | 14 | 15 |
| 8×16 | 500 | 5,000 | 10,000 | 16 | 200 | 2,000 | 8,000 | 13 | 15 |
| 8×20 | 200 | 4,000 | 8,000 | 14 | 200 | 2,000 | 8,000 | 14 | 15 |
| 10×12.5 | 200 | 4,000 | 8,000 | 15 | 200 | 2,000 | 8,000 | 15 | 12 |
| 10×15 | 200 | 3,600 | 7,200 | 16 | 200 | 2,000 | 8,000 | 18 | 12 |
| 10X16,10×17 | 200 | 3,600 | 7,200 | 17 | 200 | 1,600 | 6,400 | 15 | 12 |
| 10×20 | 200 | 3,000 | 6,000 | 19 | 200 | 1,400 | 5,600 | 17 | 12 |
| 10×25 | 200 | 2,400 | 4,800 | 17 | 200 | 1,200 | 4,800 | 16 | 12 |
| 13×13,13×16 | 100 | 2,400 | 4,800 | 15 | 200 | 800 | 3,200 | 13 | 10 |
| 13×18,13×20 | 100 | 1,800 | 3,600 | 15 | 200 | 600 | 2,400 | 10 | 10 |
| 12.5X25,13×25 | 100 | 1,200 | 2,400 | 14 | 200 | 600 | 2,400 | 14 | 10 |
| 13×30 | 100 | 1,200 | 2,400 | 16 | 100 | 500 | 2,000 | 14 | 10 |
| 13×34,13×36 | 100 | 1,000 | 2,000 | 14 | 100 | 300 | 1,200 | 12 | 10 |
| 13×38,13×40 | 100 | 800 | 1,600 | 15 | 100 | 300 | 1,200 | 15 | 10 |

| Classification 分类标准 | Standard Bulk 标准散装 | | | | Cutting & Forming 切脚&成型 | | | | Min. ordering amount 最小订购数量 |
|------------------------|------------------------------|------------------|----------------------|-------------------------|----------------------------|------------------|----------------------|-------------------------|--------------------------------|
| | Case size 铝壳尺寸 D*L(mm) | Vinyl bag 乙烯袋 | inner box 内盒 (mm) | outer carton 外箱 (mm) | gross weight 毛重 (kg) | Vinyl bag 乙烯袋 | inner box 内盒 (mm) | outer carton 外箱 (mm) | |
| 16X15、16X20 | 200 | 1000 | 2000 | 22 | 200 | 1000 | 2000 | 22 | 5 |
| 16X25 | 200 | 1000 | 2000 | 24 | - | 500 | 4000 | 44 | 5 |
| 16X30、16X32、 | 200 | 800 | 1600 | 20 | - | 500 | 3000 | 37 | 5 |
| 16X36、16X40 | 200 | 600 | 1200 | 22 | - | 500 | 3000 | 55 | 5 |
| 16X45 | 100 | 500 | 1000 | 22 | - | - | - | - | 5 |
| 18X15、18X20 | 200 | 800 | 1600 | 21 | - | - | - | - | 2.5 |
| 18X22、18X25 | 200 | 800 | 1600 | 23 | - | 500 | 2000 | 28 | 2.5 |
| 18X30 | 100 | 600 | 1200 | 25 | - | - | - | - | 2.5 |
| 18X32、18X36、 18X40 | 100 | 500 | 1000 | 25 | - | 500 | 1000 | 25 | 2.5 |
| 18X45、18X50 | 100 | 300 | 600 | 21 | - | 600 | 1200 | 40 | 2.5 |
| 20X25 | - | - | - | - | - | 400 | 800 | 20 | 1.5 |
| 22X32 | - | - | - | - | - | 320 | 1920 | 55 | 1.5 |
| 22X30 | - | - | - | - | - | 400 | 800 | 25 | 1.5 |
| 22X35、22X40 | 100 | 300 | 600 | 21 | - | 400 | 800 | 27 | 1.5 |

For Taping Ammo & Reel 对于贴平匣盒&圆盘

| Classification 分类标准 | Ammo Tape 匣盒贴平 | | | | | Reel Tape 圆盘贴平 | | | Min. ordering amount 最小订购数量 |
|------------------------|----------------------------|----------------------|-------------------------|-------------------------|-------------------------|-------------------------------|---|---|--------------------------------|
| | Case size 铝壳尺寸 D φ (mm) | inner box 内盒 (mm) | Quantity 数量 (pcs) | outer carton 外箱 (mm) | Quantity 数量 (pcs) | gross weight 毛重 (kg) | inner carton 内盒 350*350*110 (mm) | outer carton 外箱 370*370*600 (mm) | gross weight 毛重 (kg) |
| 4 φ | 340×275×50 | 3,000 | 355×297×290 | 15,000 | 6 | 3,000 | 15,000 | 8 | 25 |
| 5 φ | 340×230×50 | 2,000 | 355×252×290 | 10,000 | 6~7 | 2,400 | 12,000 | 8 | 25 |
| 6.3 φ | 340×275×50 | 2,000 | 355×297×290 | 10,000 | 8 | 2,000 | 10,000 | 6 | 20 |
| 8 φ×5-16L | 340×230×50 | 1,000 | 355×252×290 | 5,000 | 7 | 1,600 | 8,000 | 12 | 15 |
| 8 φ×20L | 340×230×58 | 1,000 | 355×252×315 | 5,000 | 7 | 1,000 | 5,000 | 12 | 15 |
| 10 φ×10~17L | 340×230×50 | 600 | 355×252×290 | 3,000 | 7 | | | | 12 |
| 10 φ×20~25L | 340×230×58 | 600 | 355×252×315 | 3,000 | 7 | - | - | - | 12 |
| 10 φ×30L | 340×230×65 | 600 | 355×252×290 | 2,400 | 7 | - | - | - | 12 |
| 13 φ×32L below | 315×275×65 | 400 | 355×297×290 | 1,600 | 5 | - | - | - | 10 |
| 13 φ×36L above | 315×275×74 | 400 | 355×297×337 | 1,600 | 5 | - | - | - | 10 |
| 16 φ×32L below | 315×275×65 | 300 | 355×297×290 | 1,200 | 5 | - | - | - | 5 |
| 16 φ×36L above | 315×275×74 | 300 | 355×297×337 | 1,200 | 5 | - | - | - | 5 |

Note : For 10 φ Reel Tape : 備註: 对于 10 φ 圆盘

| Size 尺寸 | inner carton 内箱(pcs) | outer carton 外箱(pcs) |
|-------------|-------------------------|-------------------------|
| 10 φ×10~16L | 1,200 | 6,000 |
| 10 φ×17~20L | 1,000 | 5,000 |

IX. Others 其它

(1) All Teapo capacitors comply to RoHS(Restriction of Hazardous Substances) requirements where Chromium VI(Cr+6), Cadmium(Cd), Mercury(Hg), Lead(pb), Polybrominated biphenyls(PBBs) and Polybrominated biphenyl/diphenyl ethers (PBBEs/PBDEs) have not been detected [lower than MDL (Method Detection Limit)] per SGS certification test report..

(所有 Teapo 电容器均符合 RoHS(有害物质限制)需求, 根据 SGS 认证测试报告, 铬VI(Cr + 6)、镉(Cd)、水银(汞)、铅、多溴联苯(多溴联苯)和多溴联苯/联苯醚(PBBEs /多溴二苯醚)(低于 MDL(方法检测极限)]未被检测到)

(2) Satisfied characteristic JIS C 5101

满足 JIS C 5101 特性

(3) Aluminum Electrolytic Capacitors may be damaged by corrosion which is caused by any halogenated hydrocarbon solvents.

(铝电解电容器可能会被卤化烃类溶剂导致的腐蚀而损坏)

Please let us know in advance the solvent name and conditions for your PCB cleaning

(请提前告知你们 PCB 清洗的溶剂的名称和条件.)

X. Lead processing type and Taping (导针加工类型和贴品)

Code S1: Standard Type

S1 号: 标准型

