

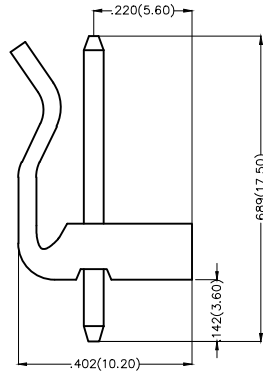
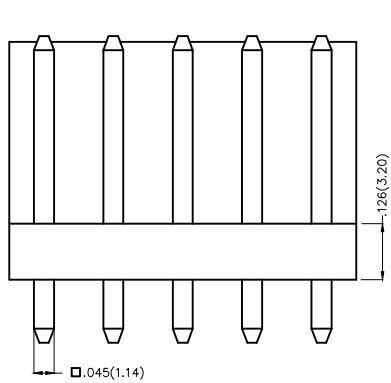
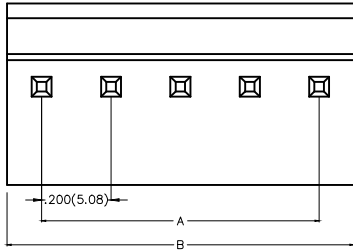
REV	LOCATIONS	DESCRIPTION	DATE	REVISER	APPD

**Electrical**

Current Rating: 10A AC(rms)/DC  
Voltage Rating: 250V AC(rms)/DC  
Contact Resistance: 25 mΩ Max  
Insulation Resistance: 1000 MΩ MIN  
Withstanding Voltage: 1500V AC r.m.s  
Temperature Range-Operating: -25°C~+85°C

**Material and Plating**

Housing: PA66( UL 94V-0)  
Contact Pin: Brass  
Plating: Tin Plated

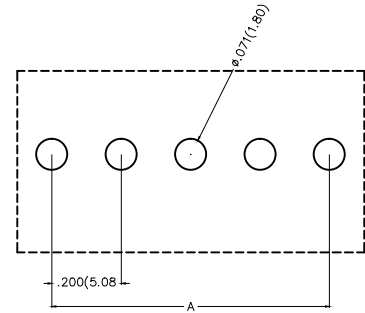


Material and Plating : Housing PA66 UL94V-0 ,Tin Plated.			
Circuits (n)	Part No.	Dimensions(in/mm)	
		A	B
2	FWF50805-S02S22TB	.200(5.08)	.400(10.16)
3	FWF50805-S03S22TB	.400(10.16)	.600(15.24)
4	FWF50805-S04S22TB	.600(15.24)	.800(20.32)
5	FWF50805-S05S22TB	.800(20.32)	1.000(25.40)
6	FWF50805-S06S22TB	1.000(25.40)	1.200(30.48)
7	FWF50805-S07S22TB	1.200(30.48)	1.400(35.56)
8	FWF50805-S08S22TB	1.400(35.56)	1.600(40.64)
9	FWF50805-S09S22TB	1.600(40.64)	1.800(45.72)
10	FWF50805-S10S22TB	1.800(45.72)	2.000(50.80)
11	FWF50805-S11S22TB	2.00(50.80)	2.200(55.88)
12	FWF50805-S12S22TB	2.20(55.88)	2.400(60.96)


**Ordering Information**

FWF 508 05 — S XX S 2 2 T B  
1 2 3 4 5 6 7 8 9 10

1 Category FWF-Wafer	2 Series Number 508-Pitch5.08mm	3 Distinction No. 05	4 Row Option Single Row	5 Circuits XX	6 Entry Angle S-180° Vertical
7 Plating 2-Tin Plated	8 Material-Resin 2-PA66	9 Color-Resin T-Transparent	10 Packaging B-PE Bag		



Recommended P.C.Board Layout

THIRD ANGLE PROJECTION	GENERAL TOLERANCES (UNLESS SPECIFIED)		APPROVE BY FRANK	DATE 28/JUN/13	PART NO. FWF50805-SXXS22TB	ITEM NO. FWF50805	 Leader Of Industry
	DESIGN UNITS Inch (metric)	X.±.012(0.30) X.±5° X.X±.008(0.20) .X'±2°	CHECKED BY JACOB	DATE 28/JUN/13	TITLE Wire to Board (Wafer) Pitch 5.08mm 180° Vertical (DIP)		
SCALE 5:1	SIZE A4	X.XX±.006(0.15) .XX'±1° X.XXX±.004(0.10) .XXX'±0.5'	DRAWN BY CHERRY	DATE 28/JUN/13	THIS DRAWING CONTAINS INFORMATION THAT IS PROPRIETARY TO TXGA INDUSTRIAL ELECTRONICS(S.Z)CO.,LTD AND SHOULD NOT BE USED WITHOUT WRITTEN PERMISSION		