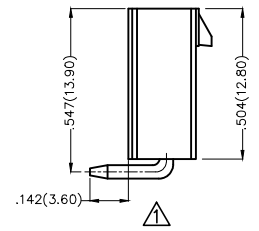
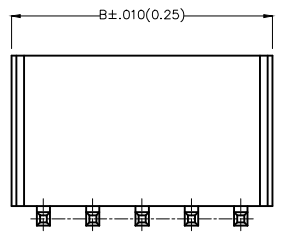
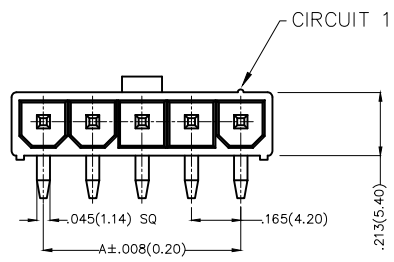


REV	LOCATIONS	DESCRIPTION	DATE	REVISED	APPD
1		Change the height of 3 circuits to be the same as other circuits.	05/JUL/19	KATE	CHERRY

Electrical
 Current Rating: 9A AC(rms)/DC
 Voltage Rating: 600V AC(rms)/DC
 Contact Resistance: 10 mΩ Max
 Insulation Resistance: 1000 MΩ MIN
 Withstanding Voltage: 1500V AC r.m.s
 Temperature Range—Operating: -40°C ~ +105°C

Material and Plating
 Housing: PA66(UL 94V-0)
 Contact Pin: Brass
 Plating: Tin Plated

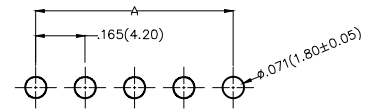


Circuits (n)	Part No.	Dimensions(in./mm)	
		A	B
2	FWF42007-S02B22TK	.165(4.20)	.379(9.60)
3	FWF42007-S03B22TK	.331(8.40)	.543(13.80)
4	FWF42007-S04B22TK	.496(12.60)	.709(18.00)
5	FWF42007-S05B22TK	.661(16.80)	.874(22.20)

Ordering Information

FWF 420 07 — S XX B 2 2 T K
 1 2 3 4 5 6 7 8 9 10

1	Category FWF—Wafer	2	Series Number 420—Pitch4.2mm	3	Distinction No. 07	4	Row Option S—Single Row	5	Circuits XX	6	Entry Angle B—90° Angle
7	Plating 2—Tin Plated	8	Material—Resin 2—PA66	9	Color—Resin T—Transparent	10	Packaging K—Tray				



Recommended P.C.Board Layout

THIRD ANGLE PROJECTION		GENERAL TOLERANCES (UNLESS SPECIFIED)		APPROVE BY	DATE	PART NO.	ITEM NO.	 Leader Of Industry	
DESIGN UNITS	INCH (metric)	X.±.012(0.30)	X.±5'	FRANK	28/JUN/13	FWF42007-SXXB22TK	FWF42007		
SCALE	SIZE	X.XX±.006(0.15)	.XX±1'	CHECKED BY	DATE	TITLE		THIS DRAWING CONTAINS INFORMATION THAT IS PROPRIETARY TO TXGA INDUSTRIAL ELECTRONICS(S.Z)CO.,LTD AND SHOULD NOT BE USED WITHOUT WRITTEN PERMISSION	
5:1	A4	X.XXX±.004(0.10)	.XXX±0.5'	JACOB	28/JUN/13	Wire to Board (Wafer) Pitch 4.2mm 90° Angle (DIP)			
				DRAWN BY	DATE				
				CHERRY	28/JUN/13				