

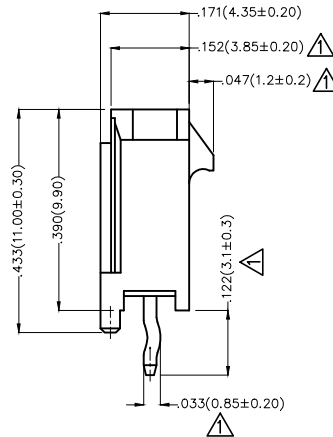
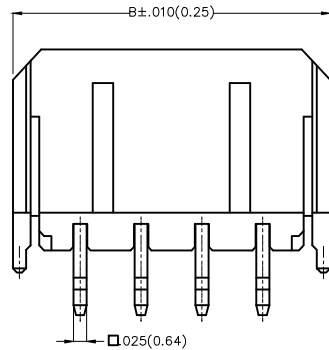
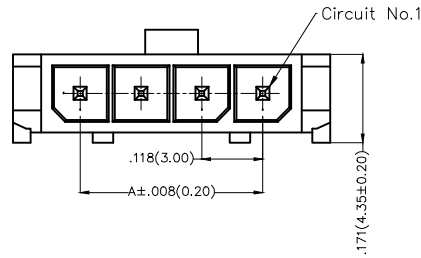
| REV | LOCATIONS | DESCRIPTION       | DATE      | REVISER | APPD   |
|-----|-----------|-------------------|-----------|---------|--------|
| 1   | △         | Dimensions change | 18/MAR/20 | KATE    | CHERRY |

**Electrical**

Current Rating: 5.0A AC(rms)/DC  
Voltage Rating: 250V AC(rms)/DC  
Contact Resistance: 10 m Ω Max  
Insulation Resistance: 1000 M Ω MIN  
Withstanding Voltage: 1500V AC r.m.s  
Temperature Range—Operating: -25°C~+85°C

**Material and Plating**

Housing: PA66( UL 94V-0)  
Contact Pin: Brass  
Plating: Tin Plated

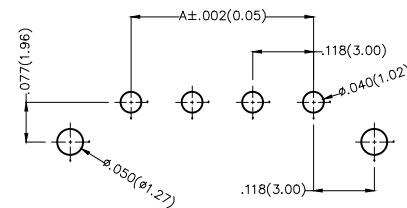


| Circuits (n) | Part No.           | Dimensions(in/mm) |              |
|--------------|--------------------|-------------------|--------------|
|              |                    | A                 | B            |
| 2            | FWF30004-S02S22K6B | .118(3.00)        | .380(9.65)   |
| 3            | FWF30004-S03S22K6B | .236(6.00)        | .498(12.65)  |
| 4            | FWF30004-S04S22K6B | .354(9.00)        | .616(15.65)  |
| 5            | FWF30004-S05S22K6B | .472(12.00)       | .734(18.65)  |
| 6            | FWF30004-S06S22K6B | .591(15.00)       | .852(21.65)  |
| 7            | FWF30004-S07S22K6B | .709(18.00)       | .967(24.65)  |
| 8            | FWF30004-S08S22K6B | .827(21.00)       | 1.089(27.65) |
| 9            | FWF30004-S09S22K6B | .945(24.00)       | 1.207(30.65) |
| 10           | FWF30004-S10S22K6B | 1.063(27.00)      | 1.325(33.65) |
| 11           | FWF30004-S11S22K6B | 1.181(30.00)      | 1.443(36.65) |
| 12           | FWF30004-S12S22K6B | 1.299(33.00)      | 1.561(39.65) |


**Ordering Information**

FWF 300 04 - S XX S 2 2 K6 B  
1 2 3 4 5 6 7 8 9 10

|                             |                                      |                             |                                |                    |                                    |
|-----------------------------|--------------------------------------|-----------------------------|--------------------------------|--------------------|------------------------------------|
| 1   Category<br>FWF—Wafer   | 2   Series Number<br>300—Pitch 3.0mm | 3   Distinction No.<br>04   | 4   Row Option<br>S—Single Row | 5   Circuits<br>XX | 6   Entry Angle<br>S—180° Vertical |
| 7   Plating<br>2—Tin Plated | 8   Material—Resin<br>2—PA66         | 9   Color—Resin<br>K6—Black | 10   Packaging<br>B—PE Bag     |                    |                                    |



Recommended P.C.Board Layout  
General tolerances: ±.002(0.05)

| THIRD ANGLE PROJECTION        |                  | GENERAL TOLERANCES (UNLESS SPECIFIED) |          | APPROVE BY | DATE      | PART NO.   | ITEM NO. | <br>Leader Of Industry |
|-------------------------------|------------------|---------------------------------------|----------|------------|-----------|--|----------|---|
| DESIGN UNITS<br>Inch (metric) | X.±.012(0.30)    | X'.±5'                                | DRAWN BY | FRANK      | 01/JUL/13 | FWF30004-SXXS22K6B   | FWF30004 |   |
|                               | X.X±.008(0.20)   | .X'±2'                                |          | CHECKED BY | DATE      |  |          | 01/JUL/13   |
| SCALE                         | X.XX±.006(0.15)  | .XX'±1'                               | JACOB    | DATE       |           | THIS DRAWING CONTAINS INFORMATION THAT IS PROPRIETARY TO TXGA INDUSTRIAL ELECTRONICS(S.Z)CO.,LTD AND SHOULD NOT BE USED WITHOUT WRITTEN PERMISSION |          |   |
| 5:1                           | X.XXX±.004(0.10) | .XXX'±0.5'                            |          | JACOB      | 01/JUL/13 |  |          |   |