

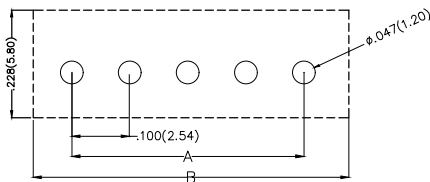
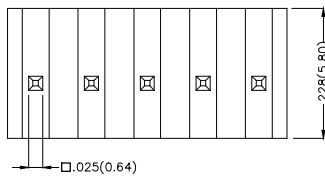
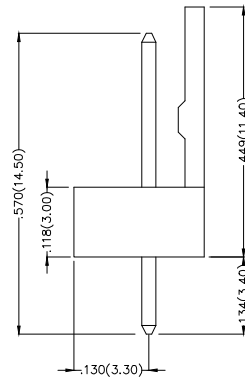
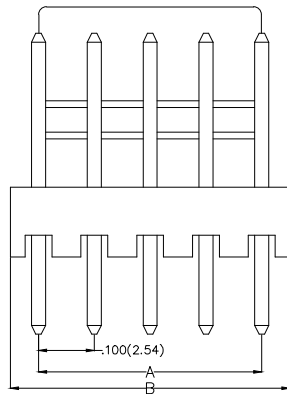
REV	LOCATIONS	DESCRIPTION	DATE	REVISER	APPD

Electrical

Current Rating: 2.5A AC(rms)/DC
Voltage Rating: 250V AC(rms)/DC
Contact Resistance: 20 mΩ Max
Insulation Resistance: 1000 MΩ MIN
Withstanding Voltage: 1000V AC r.m.s
Temperature Range—Operating: -25°C~+85°C

Material and Plating

Housing: PA66(UL 94V-2)
Contact Pin: Brass
Plating: Tin Plated



Recommended P.C.Board Layout

Ordering Information



FWF 254 01 - S XX S 2 2 W1 B
1 2 3 4 5 6 7 8 9 10

1	<u>Category</u> FWF-Wafer	2	<u>Series Number</u> 254-Pitch2.54mm	3	<u>Distinction No.</u> 01	4	<u>Row Option</u> S-Single Row	5	<u>Circuits</u> XX
6	<u>Entry Angle</u> S-180° Vertical	7	<u>Plating</u> 2-Tin Plated	8	<u>Material-Resin</u> 2-PA66	9	<u>Color-Resin</u> W1-White	10	<u>Packaging</u> B-PE Bag

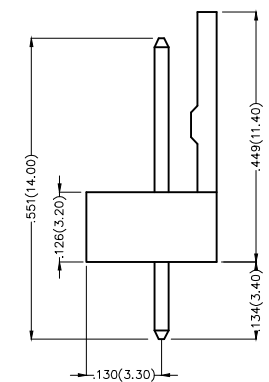
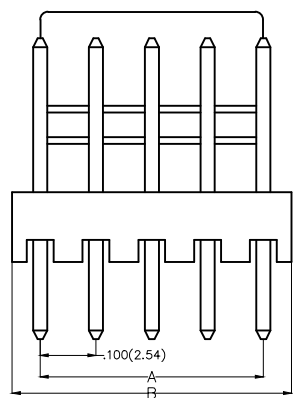
<p>THIRD ANGLE PROJECTION</p>	GENERAL TOLERANCES (UNLESS SPECIFIED)		APPROVE BY FRANK	DATE 8/JUL/13	PART NO. FWF25401-SXXS22W1B	ITEM NO. FWF25401	<p>Leader Of Industry</p>	
	X.±.012(0.30)	X.±5'	CHECKED BY JACOB	DATE 8/JUL/13	TITLE Wire to Board (Wafer) Pitch 2.54mm 180° Vertical (DIP)			REV 0
	DESIGN UNITS Inch (metric)	X.XX±.008(0.20)	.X'±2'	DRAWN BY CHERRY	DATE 8/JUL/13	THIS DRAWING CONTAINS INFORMATION THAT IS PROPRIETARY TO TXGA INDUSTRIAL ELECTRONICS(S.Z.)CO.,LTD AND SHOULD NOT BE USED WITHOUT WRITTEN PERMISSION		
SCALE 5:1	SIZE A4	X.XX±.006(0.15)	.XX'±1'					
		X.XXX±.004(0.10)	.XXX'±0.5'					

REV	LOCATIONS	DESCRIPTION	DATE	REVISER	APPD

Circuits (n)	Part No.	Dimensions(in/mm)	
		A	B
2	FWF25401-S02S22W1B	.100(2.54)	.200(5.08)
3	FWF25401-S03S22W1B	.200(5.08)	.300(7.62)
4	FWF25401-S04S22W1B	.300(7.62)	.400(10.16)
5	FWF25401-S05S22W1B	.400(10.16)	.500(12.70)
6	FWF25401-S06S22W1B	.500(12.70)	.600(15.24)
7	FWF25401-S07S22W1B	.600(15.24)	.700(17.78)
8	FWF25401-S08S22W1B	.700(17.78)	.800(20.32)
9	FWF25401-S09S22W1B	.800(20.32)	.900(22.86)
10	FWF25401-S10S22W1B	.900(22.86)	1.000(25.40)
11	FWF25401-S11S22W1B	1.000(25.40)	1.100(27.94)
12	FWF25401-S12S22W1B	1.100(27.94)	1.200(30.48)
13	FWF25401-S13S22W1B	1.200(30.48)	1.300(33.02)
14	FWF25401-S14S22W1B	1.300(33.02)	1.400(35.56)
15	FWF25401-S15S22W1B	1.400(35.56)	1.500(38.10)
16	FWF25401-S16S22W1B	1.500(38.10)	1.600(40.64)

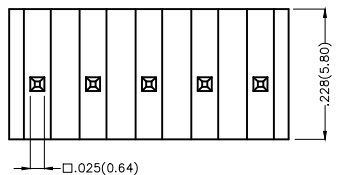
 THIRD ANGLE PROJECTION	GENERAL TOLERANCES (UNLESS SPECIFIED)		APPROVE BY FRANK	DATE 8/JUL/13	PART NO. FWF25401-SXXS22W1B	ITEM NO. FWF25401	 Leader Of Industry	
	X.±.012(0.30)	X.±5'	CHECKED BY JACOB	DATE 8/JUL/13	TITLE Wire to Board (Wafer) Pitch 2.54mm 180° Vertical (DIP)			REV 0
	DESIGN UNITS Inch (metric)	X.XX±.008(0.20)	.X'±2"	DRAWN BY CHERRY	DATE 8/JUL/13	THIS DRAWING CONTAINS INFORMATION THAT IS PROPRIETARY TO TXGA INDUSTRIAL ELECTRONICS(S.Z)CO.,LTD AND SHOULD NOT BE USED WITHOUT WRITTEN PERMISSION		
SCALE 5:1	SIZE A4	X.XXX±.004(0.10)	.XXX'±0.5'					

REV	LOCATIONS	DESCRIPTION	DATE	REVISER	APPD



Electrical
 Current Rating: 2.5A AC(rms)/DC
 Voltage Rating: 250V AC(rms)/DC
 Contact Resistance: 20 mΩ Max
 Insulation Resistance: 1000 MΩ MIN
 Withstanding Voltage: 1000V AC r.m.s
 Temperature Range—Operating: -25°C~+85°C

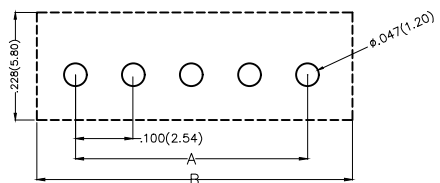
Material and Plating
 Housing: PA66(UL 94V-2)
 Contact Pin: Brass
 Plating: Tin Plated



Ordering Information

FWF 254 01 — S XX S 2 2 W5 B
 1 2 3 4 5 6 7 8 9 10

1	Category FWF—Wafer	2	Series Number 254—Pitch2.54mm	3	Distinction No. 01	4	Row Option Single Row	5	Circuits XX	6	Entry Angle S-180° Vertical
7	Plating 2—Tin Plated	8	Material—Resin 2—PA66	9	Color—Resin W5—Natural	10	Packaging B—PE Bag				





Recommended P.C.Board Layout

 THIRD ANGLE PROJECTION	GENERAL TOLERANCES (UNLESS SPECIFIED)		APPROVE BY FRANK	DATE 8/JUL/13	PART NO. FWF25401—SXXS22W5B	ITEM NO. FWF25401	 Leader Of Industry	
	DESIGN UNITS Inch (metric)	X.X±.012(0.30) X.XX±.008(0.20)	X.±5° .X'±2°	CHECKED BY JACOB	DATE 8/JUL/13	TITLE Wire to Board (Wafer) Pitch 2.54mm 180° Vertical (DIP)		REV 0
SCALE 5:1	SIZE A4	X.XX±.006(0.15) X.XXX±.004(0.10)	.XX'±1° .XXX'±0.5°	DRAWN BY CHERRY	DATE 8/JUL/13	THIS DRAWING CONTAINS INFORMATION THAT IS PROPRIETARY TO TXGA INDUSTRIAL ELECTRONICS(S.Z.)CO.,LTD AND SHOULD NOT BE USED WITHOUT WRITTEN PERMISSION		

REV	LOCATIONS	DESCRIPTION	DATE	REVISER	APPD

Circuits (n)	Part No.	Dimensions(in/mm)	
		A	B
2	FWF25401-S02S22W5B	.100(2.54)	.200(5.08)
3	FWF25401-S03S22W5B	.200(5.08)	.300(7.62)
4	FWF25401-S04S22W5B	.300(7.62)	.400(10.16)
5	FWF25401-S05S22W5B	.400(10.16)	.500(12.70)
6	FWF25401-S06S22W5B	.500(12.70)	.600(15.24)
7	FWF25401-S07S22W5B	.600(15.24)	.700(17.78)
8	FWF25401-S08S22W5B	.700(17.78)	.800(20.32)
9	FWF25401-S09S22W5B	.800(20.32)	.900(22.86)
10	FWF25401-S10S22W5B	.900(22.86)	1.000(25.40)
11	FWF25401-S11S22W5B	1.000(25.40)	1.100(27.94)
12	FWF25401-S12S22W5B	1.100(27.94)	1.200(30.48)

 THIRD ANGLE PROJECTION	GENERAL TOLERANCES (UNLESS SPECIFIED)		APPROVE BY	DATE	PART NO.	ITEM NO.	 Leader Of Industry
	X.±.012(0.30)	X.±5'	FRANK	8/JUL/13	FWF25401-SXXS22W5B	FWF25401	
DESIGN UNITS Inch (metric)	X.XX±.008(0.20)	.X'±2'	CHECKED BY	DATE	TITLE		REV 0
SCALE	X.XX±.006(0.15)	.XX'±1'	JACOB	8/JUL/13	Wire to Board (Wafer) Pitch 2.54mm 180° Vertical (DIP)		
5:1	X.XXX±.004(0.10)	.XXX'±0.5'	DRAWN BY	DATE	THIS DRAWING CONTAINS INFORMATION THAT IS PROPRIETARY TO TXGA INDUSTRIAL ELECTRONICS(S.Z)CO.,LTD AND SHOULD NOT BE USED WITHOUT WRITTEN PERMISSION		
SIZE			CHERRY	8/JUL/13	SHEET NO.2/2		
A4							