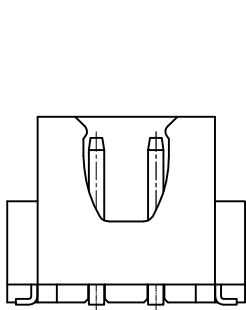
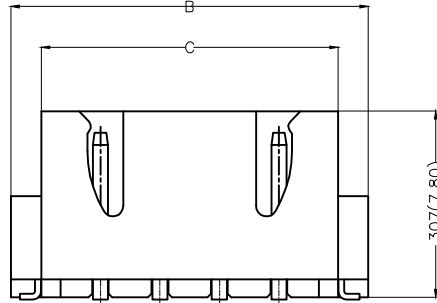


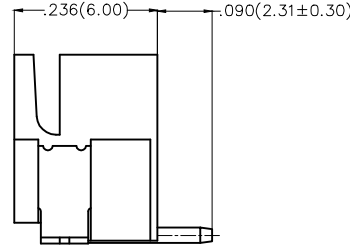
| REV | LOCATIONS | DESCRIPTION | DATE | REVISER | APPD |
|-----|-----------|-------------|------|---------|------|
| | | | | | |



2Circuits



3-12Circuits

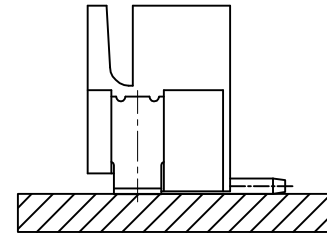


Electrical

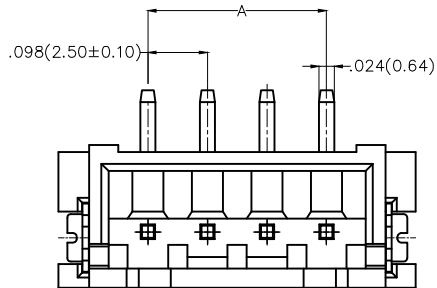
Current Rating: 3.0A AC(rms)/DC
Voltage Rating: 250V AC(rms)/DC
Contact Resistance: 20 mΩ Max
Insulation Resistance: 1000 MΩ MIN
Withstanding Voltage: 1000V AC r.m.s
Temperature Range—Operating: -25°C~+85°C

Material and Plating

Housing: PA9T(UL 94V-0)
Contact Pin: Brass
Plating: Tin Plated



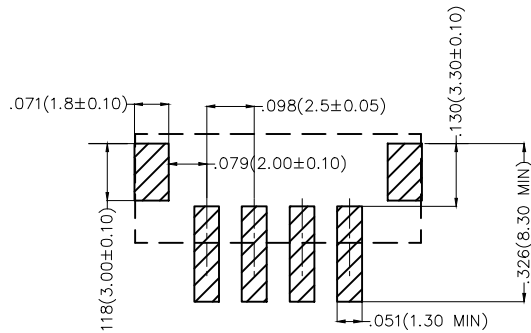
Assembly Layout




Ordering Information

FWF 250 28 — S XX S 2 4 W5 M
1 2 3 4 5 6 7 8 9 10

| | | | | | |
|---------------------------|------------------------------------|-----------------------------|----------------------------|------------------|----------------------------------|
| 1 Category FWF—Wafer | 2 Series Number 250—Pitch 2.5mm | 3 Distinction No. 28 | 4 Row Option Single Row | 5 Circuits XX | 6 Entry Angle S—180° Vertical |
| 7 Plating 2—Tin Plated | 8 Material—Resin 4—PA9T | 9 Color—Resin W5—Natural | 10 Packaging M—Reel | | |





Recommended P.C.Board Layout

| | | | | | | | |
|------------------------|---------------------------------------|----------------------------|----------------------|-------------------|--|----------------------|---|
| THIRD ANGLE PROJECTION | GENERAL TOLERANCES (UNLESS SPECIFIED) | | APPROVE BY FRANK | DATE 01/AUG/13 | PART NO. FWF25028-SXXS24W5M | ITEM NO. FWF25028 |  <p>Leader Of Industry</p> |
| | DESIGN UNITS Inch (metric) | X.X±.012(0.30) X.±5' | CHECKED BY CHERRY | DATE 01/AUG/13 | TITLE Wire to Board (Wafer) Pitch 2.5mm 180° Vertical (SMT) | | |
| SCALE 5:1 | SIZE A4 | X.XX±.006(0.15) .XX±1' | DRAWN BY KEVIN | DATE 01/AUG/13 | THIS DRAWING CONTAINS INFORMATION THAT IS PROPRIETARY TO TXGA INDUSTRIAL ELECTRONICS(S.Z)CO.,LTD AND SHOULD NOT BE USED WITHOUT WRITTEN PERMISSION | | |
| | | X.XXX±.004(0.10) .XXX±0.5' | | | | | |

| REV | LOCATIONS | DESCRIPTION | DATE | REVISER | APPD |
|-----|-----------|-------------|------|---------|------|
| | | | | | |

Material and Plating : Housing PA9T UL94V-0 , Tin Plated.

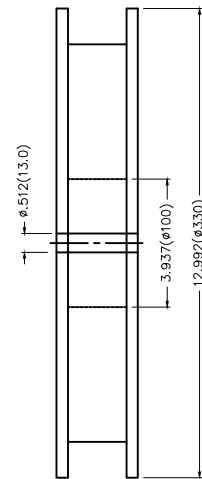
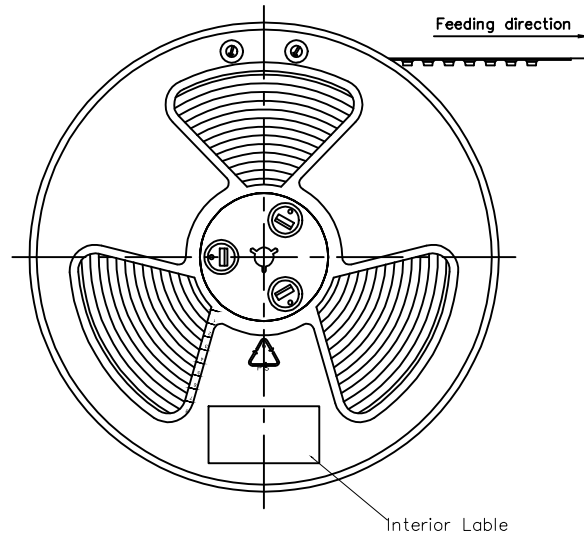
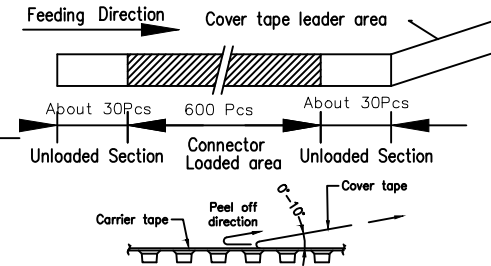
| Circuits (n) | Part No. | Dimensions(in/mm) | | |
|-----------------|--------------------|-------------------|--------------|--------------|
| | | A | B | C |
| 2 | FWF25028-S02S24W5M | .098(2.50) | .394(10.00) | .293(7.45) |
| 3 | FWF25028-S03S24W5M | .197(5.00) | .492(12.50) | .392(9.95) |
| 4 | FWF25028-S04S24W5M | .295(7.50) | .591(15.00) | .490(12.45) |
| 5 | FWF25028-S05S24W5M | .394(10.00) | .689(17.50) | .589(14.95) |
| 6 | FWF25028-S06S24W5M | .492(12.50) | .787(20.00) | .687(17.45) |
| 7 | FWF25028-S07S24W5M | .591(15.00) | .886(22.50) | .785(19.95) |
| 8 | FWF25028-S08S24W5M | .689(17.50) | .984(25.00) | .884(22.45) |
| 9 | FWF25028-S09S24W5M | .787(20.00) | 1.083(27.50) | .982(24.95) |
| 10 | FWF25028-S10S24W5M | .886(22.50) | 1.181(30.00) | 1.081(27.45) |
| 11 | FWF25028-S11S24W5M | .984(25.00) | 1.024(32.50) | 1.179(29.95) |
| 12 | FWF25028-S12S24W5M | 1.083(27.50) | 1.378(35.00) | 1.278(32.45) |

| | | | | | | | | |
|---|--|---|--|----------------------|--|---|---|-------|
|  THIRD ANGLE PROJECTION | GENERAL TOLERANCES (UNLESS SPECIFIED) | | APPROVE BY FRANK | DATE 01/AUG/13 | PART NO. FWF25028-SXXS24W5M | ITEM NO. FWF25028 |  Leader Of Industry | |
| | DESIGN UNITS Inch (metric) | X.±.012(0.30) X.XX±.008(0.20) X.XX±.006(0.15) X.XXX±.004(0.10) | X.±5° .X'±2" .XX'±1" .XXX'±0.5' | CHECKED BY CHERRY | DATE 01/AUG/13 | TITLE Wire to Board (Wafer) Pitch 2.5mm 180° Vertical (SMT) | | REV 0 |
| SCALE 5:1 | SIZE A4 | DRAWN BY KEVIN | | DATE 01/AUG/13 | THIS DRAWING CONTAINS INFORMATION THAT IS PROPRIETARY TO TXGA INDUSTRIAL ELECTRONICS(S.Z)CO.,LTD AND SHOULD NOT BE USED WITHOUT WRITTEN PERMISSION | | | |

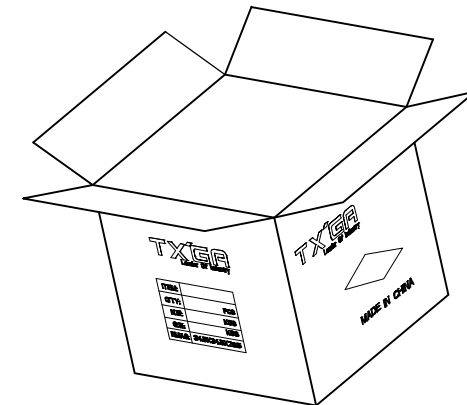
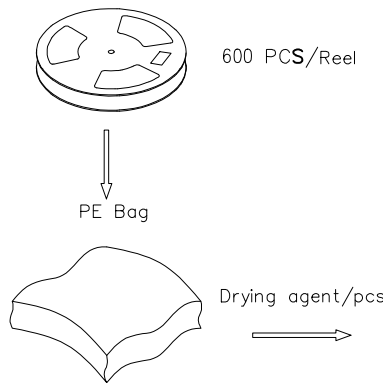
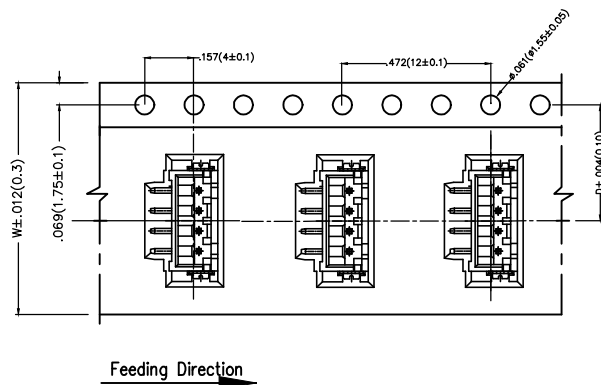
| REV | LOCATIONS | DESCRIPTION | DATE | REVISER | APPD |
|-----|-----------|-------------|------|---------|------|
| | | | | | |

Note:

1. 10 sprocket hole cumulative tolerance ± 0.2
2. Carrier camber is within 1.0mm in 100mm
3. Material: White Conductive polystyrene Alloy 100% recyclable
4. All dimensions meet EIA-481-3 requirements
5. Component load per 13" reel: 600 pcs



| Circuits (n) | Dimensions(in/mm) | | Circuits (n) | Dimensions(in/mm) | |
|--------------|-------------------|--------------|--------------|-------------------|--------------|
| | D | W | | D | W |
| 2 | .295(7.50) | .630(16.00) | 8 | .559(14.20) | 1.260(32.00) |
| 3 | .295(7.50) | .630(16.00) | 9 | .559(14.20) | 1.260(32.00) |
| 4 | .453(11.50) | .945(24.00) | 10 | .559(14.20) | 1.260(32.00) |
| 5 | .453(11.50) | .945(24.00) | 11 | .795(20.20) | 1.732(44.00) |
| 6 | .453(11.50) | .945(24.00) | 12 | .795(20.20) | 1.732(44.00) |
| 7 | .559(14.20) | 1.260(32.00) | | | |



| | | | | | | | | | |
|----------------------------|---------------------------------------|------------------------|-----------------|------------|--------------------|--|------------------------|-------|---------------|
| THIRD ANGLE PROJECTION | GENERAL TOLERANCES (UNLESS SPECIFIED) | | APPROVE BY | DATE | PART NO. | ITEM NO. | Leader Of Industry | | |
| | X. \pm .012(0.30) | X. \pm 5' | FRANK | 01/AUG/13 | FWF25028-SXXS24W5M | FWF25028 | | | |
| | DESIGN UNITS | X.X \pm .008(0.20) | .X \pm 2' | CHECKED BY | DATE | TITLE | | REV 0 | SHEET NO. 3/3 |
| | Inch (metric) | X.XX \pm .006(0.15) | .XX \pm 1' | CHERRY | 01/AUG/13 | Wire to Board (Wafer) Pitch 2.5mm 180° Vertical (SMT) | | | |
| SCALE | SIZE | X.XXX \pm .004(0.10) | .XXX \pm 0.5' | DRAWN BY | DATE | THIS DRAWING CONTAINS INFORMATION THAT IS PROPRIETARY TO TXGA INDUSTRIAL ELECTRONICS(S.Z)CO.,LTD AND SHOULD NOT BE USED WITHOUT WRITTEN PERMISSION | | | |
| 5:1 | A4 | | | KEVIN | 01/AUG/13 | | | | |