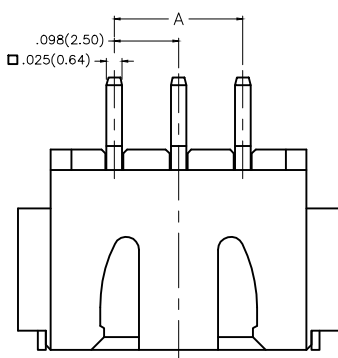
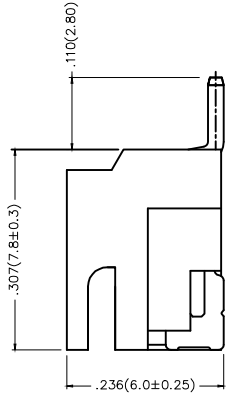


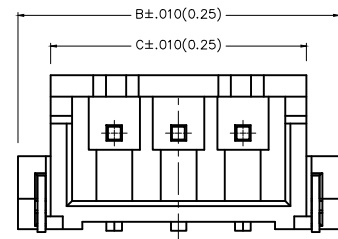
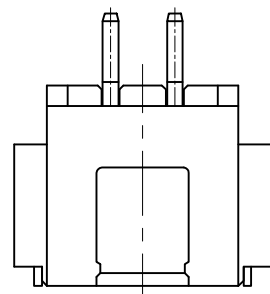
REV	LOCATIONS	DESCRIPTION	DATE	REVISER	APPD
1	△	MPQ: Change 1,000 pcs into 900 pcs / reel	02/MAR/20	KATE	CHERRY



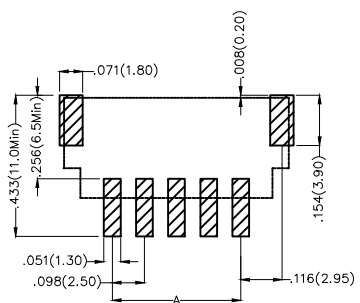
3-12Circuits



2Circuits



Recommended P.C.Board Layout



Electrical

Current Rating: 3.0A AC(rms)/DC
Voltage Rating: 250V AC(rms)/DC
Contact Resistance: 20 mΩ Max
Insulation Resistance: 1000 MΩ MIN
Withstanding Voltage: 1000V AC r.m.s
Temperature Range-Operating: -25°C~+85°C

Material and Plating

Housing: PA9T(UL 94V-0)
Contact Pin: Brass
Plating: Tin Plated

Ordering Information

FWF 250 21 — S XX B 2 4 W5 M
1 2 3 4 5 6 7 8 9 10

1	Category FWF-Wafer	2	Series Number 250-Pitch2.5mm	3	Distinction No. 21	4	Row Option S-Single Row	5	Circuits XX	6	Entry Angle B-90° Angle
7	Plating 2-Tin Plated	8	Material-Resin 4-PA9T	9	Color-Resin W5-White	10	Packaging M-Reel				

 THIRD ANGLE PROJECTION	GENERAL TOLERANCES (UNLESS SPECIFIED)		APPROVE BY FRANK	DATE 01/JUL/13	PART NO. FWF25021-SXXB24W5M	ITEM NO. FWF25021	 Leader Of Industry	
	DESIGN UNITS Inch (metric)	X.±.012(0.30) X.X±.008(0.20)	X.±5° .X±2°	CHECKED BY JACOB	DATE 01/JUL/13	TITLE Wire to Board (Wafer) Pitch 2.5mm 90° Angl (SMT)		REV 1
SCALE 5:1	SIZE A4	X.XX±.006(0.15) X.XXX±.004(0.10)	.XX±1° .XXX±0.5°	DRAWN BY CHERRY	DATE 01/JUL/13	THIS DRAWING CONTAINS INFORMATION THAT IS PROPRIETARY TO TXGA INDUSTRIAL ELECTRONICS(S.Z)CO.,LTD AND SHOULD NOT BE USED WITHOUT WRITTEN PERMISSION		

1 2 3 4 5 6 7 8

REV	LOCATIONS	DESCRIPTION	DATE	REVISER	APPD

A

A

B

B

C

C

D

D



E

E

F

F

Material and Plating : Housing PA9T UL94V-0 , Tin Plated.				
Circuits (n)	Part No.	Dimensions(in/mm)		
		A	B	C
2	FWF25021-S02B24W5M	.098(2.50)	.394(10.00)	.293(7.45)
3	FWF25021-S03B24W5M	.197(5.00)	.492(12.50)	.392(9.95)
4	FWF25021-S04B24W5M	.295(7.50)	.591(15.00)	.490(12.45)
5	FWF25021-S05B24W5M	.394(10.00)	.689(17.50)	.589(14.95)
6	FWF25021-S06B24W5M	.492(12.50)	.787(20.00)	.687(17.45)
7	FWF25021-S07B24W5M	.591(15.00)	.886(22.50)	.785(19.95)
8	FWF25021-S08B24W5M	.689(17.50)	.984(25.00)	.884(22.45)
9	FWF25021-S09B24W5M	.787(20.00)	1.083(27.50)	.982(24.95)
10	FWF25021-S10B24W5M	.886(22.50)	1.181(30.00)	1.081(27.45)
11	FWF25021-S11B24W5M	.984(25.00)	1.024(32.50)	1.179(29.95)
12	FWF25021-S12B24W5M	1.083(27.50)	1.378(35.00)	1.278(32.45)

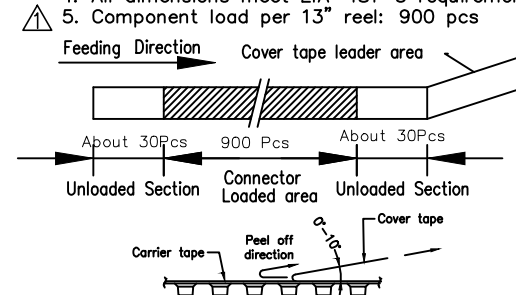
 THIRD ANGLE PROJECTION	GENERAL TOLERANCES (UNLESS SPECIFIED)		APPROVE BY FRANK	DATE 01/JUL/13	PART NO. FWF25021-SXXB24W5M	ITEM NO. FWF25021	 Leader Of Industry	
	X.±.012(0.30)	X.±5°	CHECKED BY JACOB	DATE 01/JUL/13	TITLE Wire to Board (Wafer) Pitch 2.5mm 90° Angl (SMT)			REV 1
	DESIGN UNITS Inch (metric)	X.X±.008(0.20)	.X±2°	DRAWN BY CHERRY	DATE 01/JUL/13	THIS DRAWING CONTAINS INFORMATION THAT IS PROPRIETARY TO TXGA INDUSTRIAL ELECTRONICS(S.Z)CO.,LTD AND SHOULD NOT BE USED WITHOUT WRITTEN PERMISSION		
	SCALE 5:1	SIZE A4	X.XX±.006(0.15)	.XX±1°	X.XXX±.004(0.10)	.XXX±0.5°		

1 2 3 4 5 6 7 8

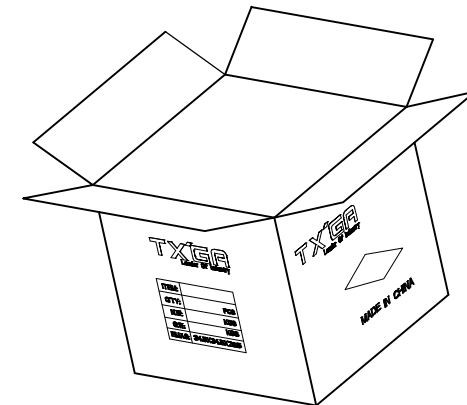
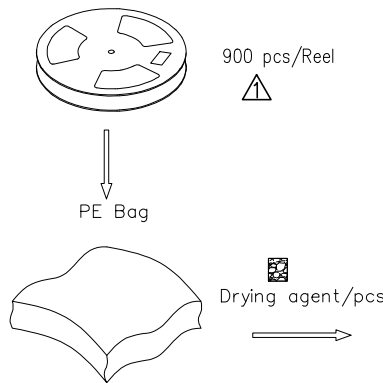
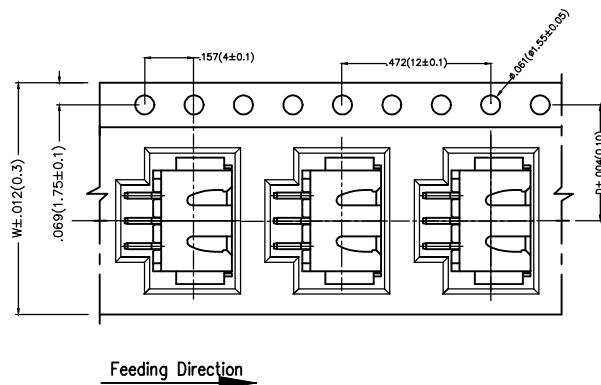
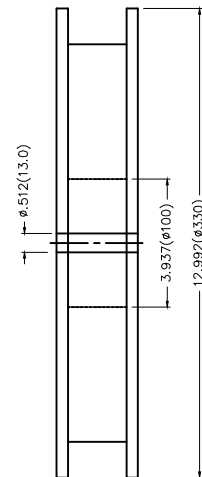
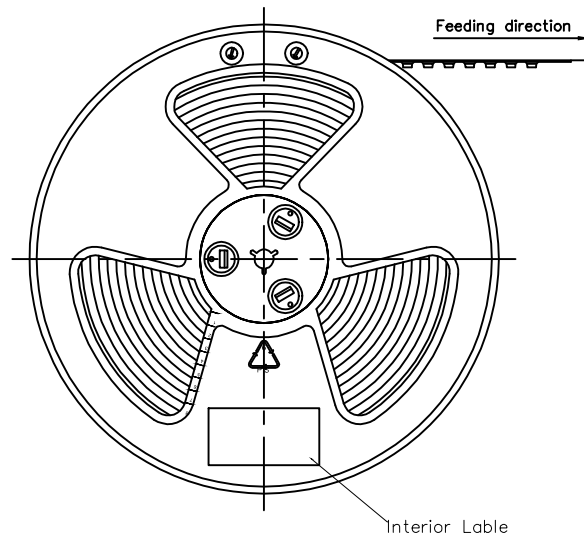
REV	LOCATIONS	DESCRIPTION	DATE	REVISER	APPD

Note:

1. 10 sprocket hole cumulative tolerance ± 0.2
2. Carrier camber is within 1.0mm in 100mm
3. Material: White Conductive polystyrene Alloy 100% recyclable
4. All dimensions meet EIA-481-3 requirements
5. Component load per 13" reel: 900 pcs



Circuits (n)	Dimensions(in/mm)		Circuits (n)	Dimensions(in/mm)	
	D	W		D	W
2	.295(7.50)	.630(16.00)	8	.559(14.20)	1.260(32.00)
3	.295(7.50)	.630(16.00)	9	.559(14.20)	1.260(32.00)
4	.453(11.50)	.945(24.00)	10	.559(14.20)	1.260(32.00)
5	.453(11.50)	.945(24.00)	11	.795(20.20)	1.732(44.00)
6	.453(11.50)	.945(24.00)	12	.795(20.20)	1.732(44.00)
7	.559(14.20)	1.260(32.00)			



 THIRD ANGLE PROJECTION	GENERAL TOLERANCES (UNLESS SPECIFIED)		APPROVE BY	DATE	PART NO.	ITEM NO.	 Leader Of Industry		
	X. \pm .012(0.30)	X. \pm 5'	FRANK	01/JUL/13	FWF25021-SXXB24W5M	FWF25021			
	DESIGN UNITS	X.X \pm .008(0.20)	.X \pm 2'	CHECKED BY	DATE	TITLE		REV 1	SHEET NO. 3/3
	Inch (metric)	X.XX \pm .006(0.15)	.XX \pm 1'	JACOB	01/JUL/13	Wire to Board (Wafer) Pitch 2.5mm 90° Angled (SMT)			
SCALE	SIZE	X.XXX \pm .004(0.10)	.XXX \pm 0.5'	DRAWN BY	DATE	THIS DRAWING CONTAINS INFORMATION THAT IS PROPRIETARY TO TXGA INDUSTRIAL ELECTRONICS(S.Z)CO.,LTD AND SHOULD NOT BE USED WITHOUT WRITTEN PERMISSION			
5:1	A4			CHERRY	01/JUL/13				