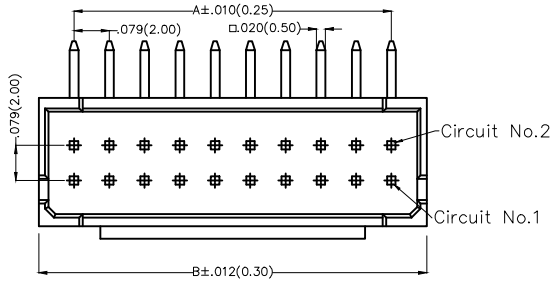
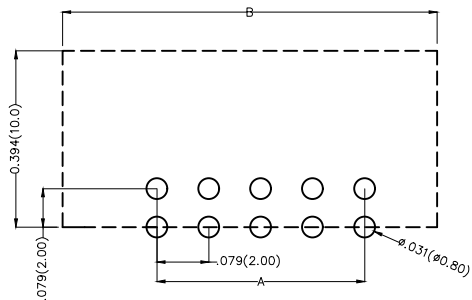
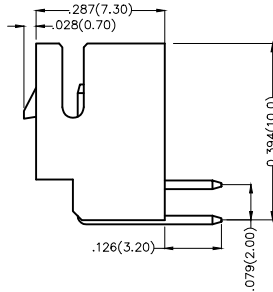
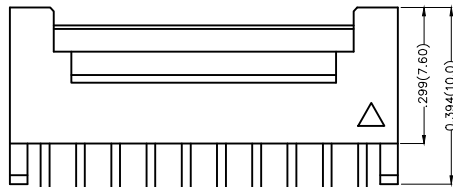


| REV | LOCATIONS | DESCRIPTION | DATE | REVISER | APPD |
|-----|-----------|-------------|------|---------|------|
| | | | | | |



Electrical
 Current Rating: 3.0A AC(rms)/DC
 Voltage Rating: 250V AC(rms)/DC
 Contact Resistance: 30 mΩ Max
 Insulation Resistance: 1000 MΩ MIN
 Withstanding Voltage: 1000V AC r.m.s
 Temperature Range—Operating: -25°C~+85°C

Material and Plating
 Housing: PA46(UL 94V-0)
 Contact Pin: Brass
 Plating: Tin Plated




Recommended P.C.Board Layout

Ordering Information



FWF 200 17 — D XX B 2 2 W5 B
 1 2 3 4 5 6 7 8 9 10

| | | | | | |
|---------------------------|------------------------------------|---------------------------|----------------------------|------------------|------------------------------|
| 1 Category FWF-Wafer | 2 Series Number 200-Pitch 2.0mm | 3 Distinction No. 17 | 4 Row Option Double Row | 5 Circuits XX | 6 Entry Angle B-90° Angle |
| 7 Plating 2-Tin Plated | 8 Material-Resin 2-PA46 | 9 Color-Resin W5-White | 10 Packaging B-PE Bag | | |

| | | | | | | | |
|------------------------|---------------------------------------|----------------------------|---------------------|-------------------|---|----------------------|---|
| THIRD ANGLE PROJECTION | GENERAL TOLERANCES (UNLESS SPECIFIED) | | APPROVE BY FRANK | DATE 18/JUN/13 | PART NO. FWF20017-DXXB22W5B | ITEM NO. FWF20017 |  Leader Of Industry |
| | DESIGN UNITS Inch (metric) | X.±.012(0.30) X.±5° | CHECKED BY JACOB | DATE 18/JUN/13 | TITLE Wire to Board (Wafer) Pitch 2.0mm 90° Angled (DIP) | | |
| SCALE 5:1 | SIZE A4 | X.XX±.006(0.15) .XX±1° | DRAWN BY CHERRY | DATE 18/JUN/13 | THIS DRAWING CONTAINS INFORMATION THAT IS PROPRIETARY TO TXGA INDUSTRIAL ELECTRONICS(S.Z.)CO.,LTD AND SHOULD NOT BE USED WITHOUT WRITTEN PERMISSION | | |
| | | X.XXX±.004(0.10) .XXX±0.5° | | | | | |

| REV | LOCATIONS | DESCRIPTION | DATE | REVISER | APPD |
|-----|-----------|-------------|------|---------|------|
| | | | | | |

| Circuits (n) | Part No. | Dimensions(in/mm) | |
|-----------------|--------------------|-------------------|--------------|
| | | A | B |
| 4 | FWF20017-D04B22W5B | .079(2.00) | .236(6.00) |
| 6 | FWF20017-D06B22W5B | .157(4.00) | .315(8.00) |
| 8 | FWF20017-D08B22W5B | .236(6.00) | .394(10.00) |
| 10 | FWF20017-D10B22W5B | .315(8.00) | .472(12.00) |
| 12 | FWF20017-D12B22W5B | .394(10.00) | .551(14.00) |
| 14 | FWF20017-D14B22W5B | .472(12.00) | .630(16.00) |
| 16 | FWF20017-D16B22W5B | .551(14.00) | .709(18.00) |
| 18 | FWF20017-D18B22W5B | .630(16.00) | .787(20.00) |
| 20 | FWF20017-D20B22W5B | .709(18.00) | .866(22.00) |
| 22 | FWF20017-D22B22W5B | .787(20.00) | .945(24.00) |
| 24 | FWF20017-D24B22W5B | .866(22.00) | 1.024(26.00) |
| 26 | FWF20017-D26B22W5B | .945(24.00) | 1.102(28.00) |
| 28 | FWF20017-D28B22W5B | 1.024(26.00) | 1.181(30.00) |
| 30 | FWF20017-D30B22W5B | 1.102(28.00) | 1.260(32.00) |
| 34 | FWF20017-D34B22W5B | 1.260(32.00) | 1.417(36.00) |
| 36 | FWF20017-D36B22W5B | 1.339(34.00) | 1.496(38.00) |
| 40 | FWF20017-D40B22W5B | 1.496(38.00) | 1.654(42.00) |

| | | | | | | | | |
|---|--|--|---------------------------------------|---------------------|--|--|---|-------|
|  THIRD ANGLE PROJECTION | GENERAL TOLERANCES (UNLESS SPECIFIED) | | APPROVE BY FRANK | DATE 18/JUN/13 | PART NO. FWF20017-DXXB22W5B | ITEM NO. FWF20017 |  Leader Of Industry | |
| | DESIGN UNITS Inch (metric) | X.±.012(0.30) X.X±.008(0.20) X.XX±.006(0.15) X.XXX±.004(0.10) | X.±5° .X±2° .XX±1° .XXX±0.5° | CHECKED BY JACOB | DATE 18/JUN/13 | TITLE Wire to Board (Wafer) Pitch 2.0mm 90° Angled (DIP) | | REV 0 |
| SCALE 5:1 | SIZE A4 | DRAWN BY CHERRY | | DATE 18/JUN/13 | THIS DRAWING CONTAINS INFORMATION THAT IS PROPRIETARY TO TXGA INDUSTRIAL ELECTRONICS(S.Z)CO.,LTD AND SHOULD NOT BE USED WITHOUT WRITTEN PERMISSION | | | |