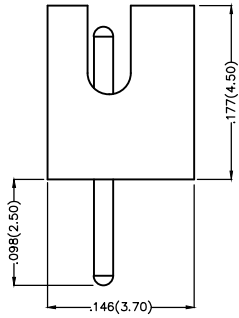
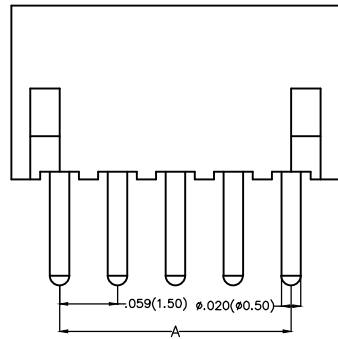
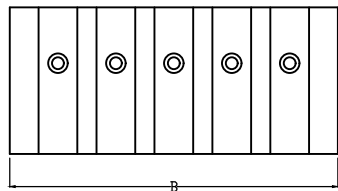


REV	LOCATIONS	DESCRIPTION	DATE	REVISER	APPD



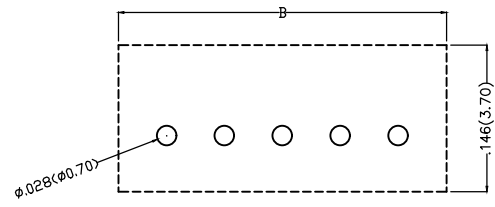
Electrical
 Current Rating: 1.0A AC(rms)/DC
 Voltage Rating: 50V AC(rms)/DC
 Contact Resistance: 20 mΩ Max
 Insulation Resistance: 500 MΩ MIN
 Withstanding Voltage: 500V AC r.m.s
 Temperature Range—Operating: -25°C ~ +85°C
 Material and Plating
 Housing: PA46(UL 94V-0)
 Contact Pin: Brass
 Plating: Tin Plated




Ordering Information

FWF 150 01 — S XX S 2 6 W5 B
 1 2 3 4 5 6 7 8 9 10

1 Category FWF—Wafer	2 Series Number 150—Pitch1.5mm	3 Distinction No. 01	4 Row Option S—Single Row	5 Circuits XX	6 Entry Angle S—180° Vertical
7 Plating 2—Tin Plated	8 Material—Resin 6—PA46	9 Color—Resin W5—White	10 Packaging B—PE Bag		





Recommended P.C.Board Layout

THIRD ANGLE PROJECTION	GENERAL TOLERANCES (UNLESS SPECIFIED)		APPROVE BY FRANK	DATE 8/JUL/13	PART NO. FWF15001—SXXS26W5B	ITEM NO. FWF15001	 Leader Of Industry
	DESIGN UNITS Inch (metric)	X.±.012(0.30) X.±5'	CHECKED BY JACOB	DATE 8/JUL/13	TITLE Wire to Board (Wafer) Pitch 1.5mm 180° Vertical (DIP)		
SCALE 5:1	SIZE A4	X.XX±.006(0.15) .XX±1'	DRAWN BY CHERRY	DATE 8/JUL/13	THIS DRAWING CONTAINS INFORMATION THAT IS PROPRIETARY TO TXGA INDUSTRIAL ELECTRONICS(S.Z.)CO.,LTD AND SHOULD NOT BE USED WITHOUT WRITTEN PERMISSION		

REV	LOCATIONS	DESCRIPTION	DATE	REVISER	APPD

Circuits (n)	Part No.	Dimensions(in/mm)	
		A	B
2	FWF15001-S02S26W5B	.059(1.50)	.177(4.50)
3	FWF15001-S03S26W5B	.118(3.00)	.236(6.00)
4	FWF15001-S04S26W5B	.177(4.50)	.295(7.50)
5	FWF15001-S05S26W5B	.236(6.00)	.354(9.00)
6	FWF15001-S06S26W5B	.295(7.50)	.413(10.50)
7	FWF15001-S07S26W5B	.354(9.00)	.472(12.00)
8	FWF15001-S08S26W5B	.413(10.50)	.531(13.50)
9	FWF15001-S09S26W5B	.472(12.00)	.591(15.00)
10	FWF15001-S10S26W5B	.531(13.50)	.650(16.50)
11	FWF15001-S11S26W5B	.591(15.00)	.709(18.00)
12	FWF15001-S12S26W5B	.650(16.50)	.768(19.50)
13	FWF15001-S13S26W5B	.709(18.00)	.827(21.00)
14	FWF15001-S14S26W5B	.768(19.50)	.886(22.50)

 THIRD ANGLE PROJECTION	GENERAL TOLERANCES (UNLESS SPECIFIED)		APPROVE BY FRANK	DATE 8/JUL/13	PART NO. FWF15001-SXXS26W5B	ITEM NO. FWF15001	 Leader Of Industry	
	DESIGN UNITS Inch (metric)	X.±.012(0.30) X.XX±.008(0.20) X.XX±.006(0.15) X.XXX±.004(0.10)	X.±5' .X±2' .XX±1' .XXX±0.5'	CHECKED BY JACOB	DATE 8/JUL/13	TITLE Wire to Board (Wafer) Pitch 1.5mm 180° Vertical (DIP)		REV 0
SCALE 5:1	SIZE A4	DRAWN BY CHERRY		DATE 8/JUL/13	THIS DRAWING CONTAINS INFORMATION THAT IS PROPRIETARY TO TXGA INDUSTRIAL ELECTRONICS(S.Z)CO.,LTD AND SHOULD NOT BE USED WITHOUT WRITTEN PERMISSION			