

REV	LOCATIONS	DESCRIPTION	DATE	REVISED	APPD

Electrical

Current Rating: 1.5A AC(rms)/DC
Voltage Rating: 30V AC(rms)/DC
Contact Resistance: 30 mΩ Max
Insulation Resistance: 1000 MΩ MIN
Withstanding Voltage: 500V AC r.m.s
Temperature Range-Operating: -40°C~+85°C
Material and Plating
Housing: Thermoplastic Polyester(UL 94V-0)
Contact Pin: Phosphor Bronze
Plating: Selective gold in contact area, Tin on tail.

* Note: All materials meet the "EU RoHs"

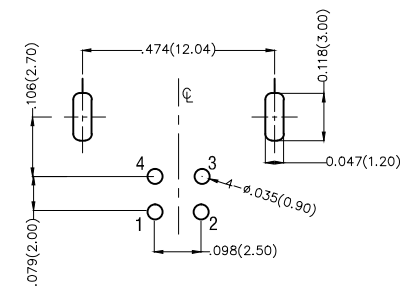
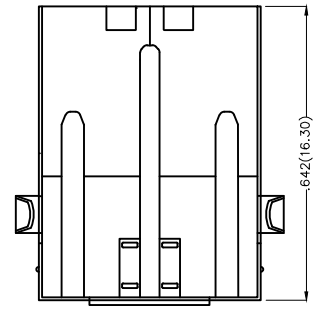
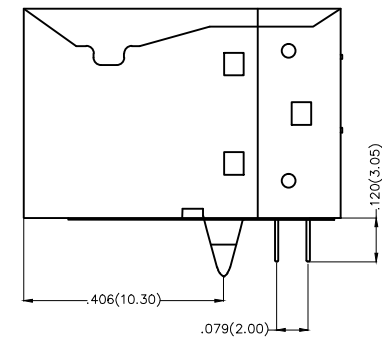
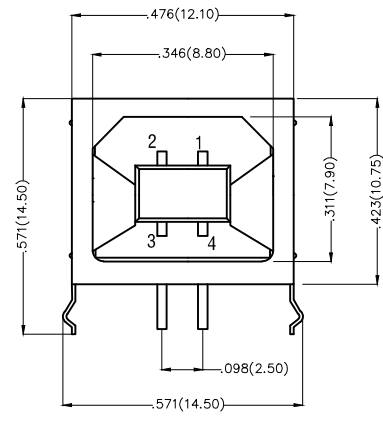
Pinassignment:

Pins	Signal name
PIN 1	+5V
PIN 2	DATA-
PIN 3	DATA+
PIN 4	Ground

Ordering Informaion

FUS 2 13 — F D B XX K
1 2 3 4 5 6 7 8

1	Category FUS-USB	2	Series Number 2-USB 2.0	3	Distinction No. 13	4	Type F-Female	5	Assembly Layout D-DIP
6	Entry Angle B-90° Angle	7	Color-Resin K6-Black W1-White	8	Packaging K-Tray				



Recommended P.C.Board Layout

<p>THIRD ANGLE PROJECTION</p>	GENERAL TOLERANCES (UNLESS SPECIFIED)		APPROVE BY FRANK	DATE 21/JUN/13	PART NO. FUS213-FDBXXK	ITEM NO. FUS213	<p>Leader Of Industry</p>	
	X.±.012(0.30)	X.±5'	CHECKED BY CHERRY	DATE 21/JUN/13	TITLE USB B-type 4Circuits 90°Angle Female(DIP)			REV 0
	DESIGN UNITS Inch (metric)	X.X±.008(0.20)	.X'±2'	DRAWN BY JACOB	DATE 21/JUN/13	THIS DRAWING CONTAINS INFORMATION THAT IS PROPRIETARY TO TXGA INDUSTRIAL ELECTRONICS(S.Z)CO.,LTD AND SHOULD NOT BE USED WITHOUT WRITTEN PERMISSION		
	SCALE 5:1	SIZE A4	X.XX±.006(0.15)	.XX'±1'	X.XXX±.004(0.10)	.XXX'±0.5'		