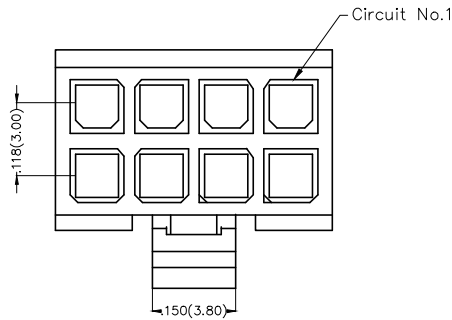
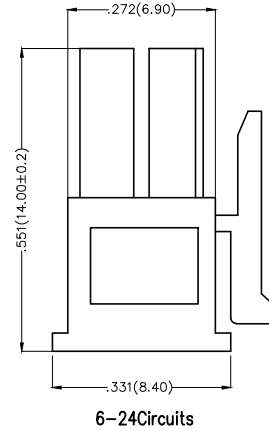
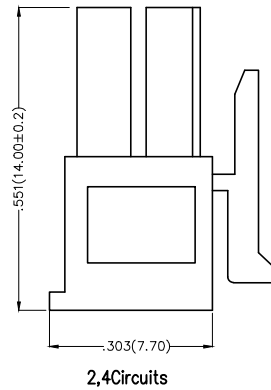
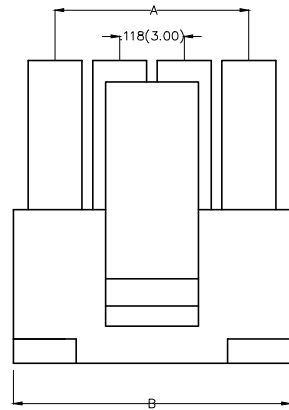


| REV | LOCATIONS | DESCRIPTION | DATE | REVISER | APPD |
|-----|-----------|-------------|------|---------|------|
| | | | | | |

Electrical
 Temperature Range—Operating: -40°C~+105°C
 Material
 Housing: PA66(UL 94V-0)
 Applicable Terminal: FT30001
 Mates With: FHG30003Series



| Circuits (n) | Part No. | Dimensions(n/mm) | |
|--------------|-------------------|------------------|--------------|
| | | A | B |
| 2 | FHG30001-D02M2K6B | — | .152(3.85) |
| 4 | FHG30001-D04M2K6B | .118(3.00) | .270(6.85) |
| 6 | FHG30001-D06M2K6B | .236(6.00) | .388(9.85) |
| 8 | FHG30001-D08M2K6B | .354(9.00) | .506(12.85) |
| 10 | FHG30001-D10M2K6B | .472(12.00) | .624(15.85) |
| 12 | FHG30001-D12M2K6B | .591(15.00) | .742(18.85) |
| 14 | FHG30001-D14M2K6B | .709(18.00) | .860(21.85) |
| 16 | FHG30001-D16M2K6B | .827(21.00) | .978(24.85) |
| 18 | FHG30001-D18M2K6B | .945(24.00) | 1.096(27.85) |
| 20 | FHG30001-D20M2K6B | 1.063(27.00) | 1.215(30.85) |
| 22 | FHG30001-D22M2K6B | 1.181(30.00) | 1.333(33.85) |
| 24 | FHG30001-D24M2K6B | 1.299(33.00) | 1.451(36.85) |



Ordering Information

FHG 300 01 — D XX M 2 K6 B
 1 2 3 4 5 6 7 8 9

| | | | | | | | | | |
|---|-------------------------|---|---------------------------------|---|-------------------------|---|----------------------------|---|----------------|
| 1 | Category FHG—Housing | 2 | Series Number 300—Pitch3.0mm | 3 | Distinction No. 01 | 4 | Row Option D—Double Row | 5 | Circuits XX |
| 6 | Entry Type M—Male | 7 | Material—Resin 2—PA66 | 8 | Color—Resin K6—Black | 9 | Packaging B—PE Bag | | |

| | | | | | | | | |
|-------------------------------|--|------------------|---------------------|---------------------|-------------------------------|--|------------------------|-------|
| THIRD ANGLE PROJECTION | GENERAL TOLERANCES (UNLESS SPECIFIED) | | APPROVE BY FRANK | DATE 25/JUN/13 | PART NO. FHG30001-DXXM2K6B | ITEM NO. FHG30001 | Leader Of Industry | |
| | DESIGN UNITS Inch (metric) | X.±.012(0.30) | X.±5' | CHECKED BY JACOB | DATE 25/JUN/13 | TITLE Wire to Board Pitch 3.0mm(Housing) | | REV 0 |
| SCALE 5:1 | SIZE A4 | X.XX±.008(0.20) | X.±2' | DRAWN BY CHERRY | DATE 25/JUN/13 | THIS DRAWING CONTAINS INFORMATION THAT IS PROPRIETARY TO TXGA INDUSTRIAL ELECTRONICS(S.Z)CO.,LTD AND SHOULD NOT BE USED WITHOUT WRITTEN PERMISSION | | |
| | | X.XX±.006(0.15) | .XX±1' | | | | | |
| | | X.XXX±.004(0.10) | .XXX±0.5' | | | | | |