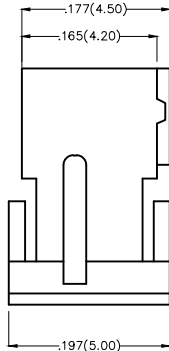
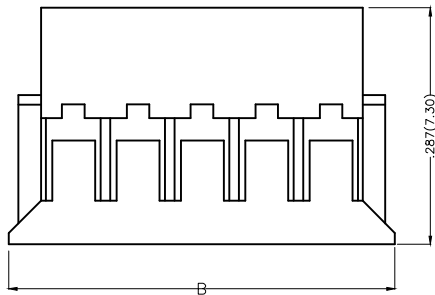
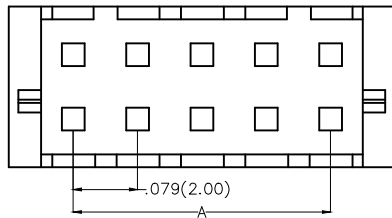


REV	LOCATIONS	DESCRIPTION	DATE	REVISER	APPD

Electrical
 Temperature Range—Operating: -25°C~+85°C
 Material
 Housing: PA66(UL 94V-0)
 Applicable Terminal: FT20002
 Mates With(Wafer): FWF20005,FWF20006Series



Circuits (n)	Part No.	Dimensions(in/mm)		Circuits (n)	Part No.	Dimensions(in/mm)	
		A	B			A	B
4	FHG20003-D04M2W1B	.079(2.00)	.232(5.90)	24	FHG20003-D24M2W1B	.866(22.00)	1.020(25.90)
6	FHG20003-D06M2W1B	.157(4.00)	.311(7.90)	26	FHG20003-D26M2W1B	.945(24.00)	1.098(27.90)
8	FHG20003-D08M2W1B	.236(6.00)	.390(9.90)	28	FHG20003-D28M2W1B	1.024(26.00)	1.177(29.90)
10	FHG20003-D10M2W1B	.315(8.00)	.469(11.90)	30	FHG20003-D30M2W1B	1.102(28.00)	1.256(31.90)
12	FHG20003-D12M2W1B	.394(10.00)	.547(13.90)	32	FHG20003-D32M2W1B	1.181(30.00)	1.335(33.90)
14	FHG20003-D14M2W1B	.472(12.00)	.626(15.90)	34	FHG20003-D34M2W1B	1.260(32.00)	1.413(35.90)
16	FHG20003-D16M2W1B	.551(14.00)	.705(17.90)	36	FHG20003-D36M2W1B	1.339(34.00)	1.492(37.90)
18	FHG20003-D18M2W1B	.630(16.00)	.783(19.90)	38	FHG20003-D38M2W1B	1.417(36.00)	1.571(39.90)
20	FHG20003-D20M2W1B	.709(18.00)	.862(21.90)	40	FHG20003-D40M2W1B	1.496(38.00)	1.650(41.90)
22	FHG20003-D22M2W1B	.787(20.00)	.941(23.90)				

Ordering Information

FHG 200 03 — D XX M 2 W1 B
 1 2 3 4 5 6 7 8 9

1	Category FHG—Housing	2	Series Number 200—Pitch 2.0mm	3	Distinction No. 03	4	Row Option D—Double Row	5	Circuits XX
6	Entry Type M—Male	7	Material—Resin 2—PA66	8	Color—Resin W1—White	9	Packaging B—PE Bag		

 THIRD ANGLE PROJECTION	GENERAL TOLERANCES (UNLESS SPECIFIED)		APPROVE BY FRANK	DATE 25/JUN/13	PART NO. FHG20003-DXXM2W1B	ITEM NO. FHG20003	 Leader Of Industry	
	DESIGN UNITS Inch (metric)	X.±.012(0.30) X.X±.008(0.20)	X.±5° .X±2°	CHECKED BY JACOB	DATE 25/JUN/13	TITLE Wire to Board Pitch 2.0mm(Housing)		REV 0
SCALE 5:1	SIZE A4	X.XX±.006(0.15) X.XXX±.004(0.10)	.XX±1° .XXX±0.5°	DRAWN BY CHERRY	DATE 25/JUN/13	THIS DRAWING CONTAINS INFORMATION THAT IS PROPRIETARY TO TXGA INDUSTRIAL ELECTRONICS(S.Z)CO.,LTD AND SHOULD NOT BE USED WITHOUT WRITTEN PERMISSION		