

REV	LOCATIONS	DESCRIPTION	DATE	REVISER	APPD

SPECIFICATIONS

Electrical

Current Rating: 3.0A AC(rms)/DC
Voltage Rating: 350V AC(rms)/DC
Contact Resistance: 20 mΩ Max
Insulation Resistance: 1000 MΩ MIN
Withstanding Voltage: 500V AC r.m.s
Temperature Range-Operating: -25°C~+85°C

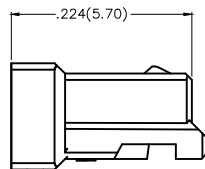
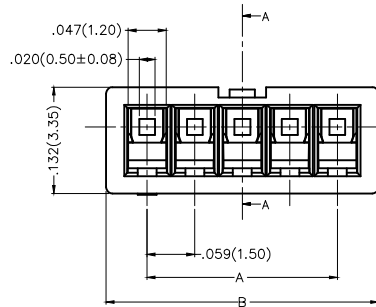
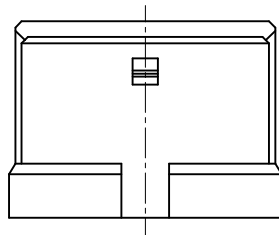
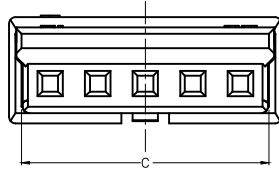
Material: PA66 UL94V-0
Applicable Terminal: FT15003-F2H
Mates With: FWF15008 Series


Circuits (n)	Part No.	Dimensions(in/mm)		
		A	B	C
2	FHG15003-S02M2W1B	.059(1.50)	.161(4.10)	.130(3.30)
3	FHG15003-S03M2W1B	.118(3.00)	.220(5.60)	.189(4.80)
4	FHG15003-S04M2W1B	.177(4.50)	.280(7.10)	.248(6.30)
5	FHG15003-S05M2W1B	.236(6.00)	.339(8.60)	.307(7.80)
6	FHG15003-S06M2W1B	.295(7.50)	.398(10.10)	.366(9.30)
7	FHG15003-S07M2W1B	.354(9.00)	.457(11.60)	.425(10.80)
8	FHG15003-S08M2W1B	.413(10.50)	.516(13.10)	.484(12.30)
9	FHG15003-S09M2W1B	.472(12.00)	.574(14.60)	.543(13.80)
10	FHG15003-S10M2W1B	.531(13.50)	.634(16.10)	.602(15.30)
11	FHG15003-S11M2W1B	.590(15.00)	.693(17.60)	.661(16.80)
12	FHG15003-S12M2W1B	.650(16.50)	.751(19.10)	.720(18.30)
13	FHG15003-S13M2W1B	.709(18.00)	.811(20.60)	.780(19.80)
14	FHG15003-S14M2W1B	.768(19.50)	.870(22.10)	.839(21.30)
15	FHG15003-S15M2W1B	.827(21.00)	.929(23.60)	.898(22.80)

Ordering Information

FHG 150 03 - S XX M 2 W1 B
1 2 3 4 5 6 7 8 9

1	Category FHG-Housing	2	Series Number 150-Pitch1.50mm	3	Distinction No. 03	4	Row Option S-Single row		
5	Circuits XX	6	Type M-Male	7	Material-Resin 2-PA66	8	Color-Resin W1-White	9	Packaging B-PE Bag



THIRD ANGLE PROJECTION	GENERAL TOLERANCES (UNLESS SPECIFIED)		APPROVE BY FRANK	DATE 19/JUN/17	PART NO. FHG15003-SXXM2W1B	ITEM NO. FHG15003	 Leader Of Industry
	DESIGN UNITS Inch (metric)	X.±.012(0.30) X.±5'	CHECKED BY JACOB	DATE 19/JUN/17	TITLE Wire to Board Pitch 1.5mm(Housing)		
SCALE 5:1	SIZE A4	X.XX±.006(0.15) .XX±1'	DRAWN BY LXF	DATE 19/JUN/17	THIS DRAWING CONTAINS INFORMATION THAT IS PROPRIETARY TO TXGA INDUSTRIAL ELECTRONICS(S.Z)CO.,LTD AND SHOULD NOT BE USED WITHOUT WRITTEN PERMISSION		