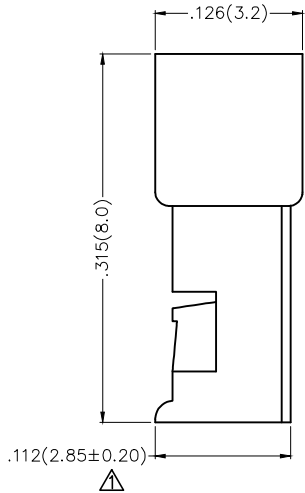
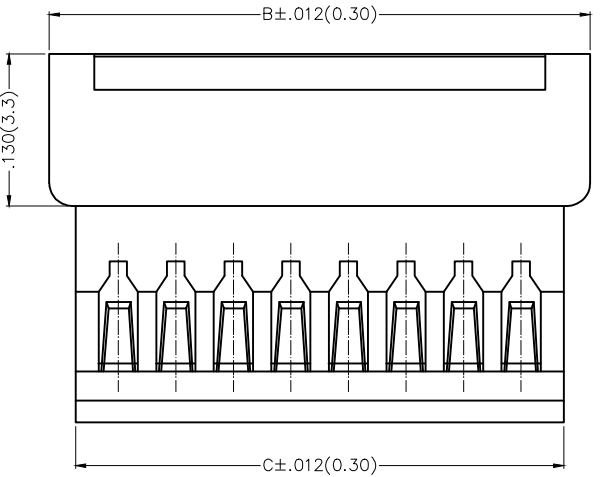
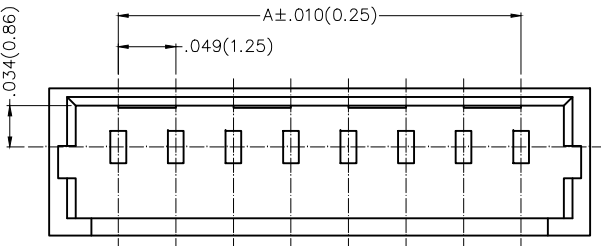


1 2 3 4 5 6 7 8

REV	LOCATIONS	DESCRIPTION	DATE	REVISER	APPD
1		Tolerance change	29/JUN/20	KATE	CHERRY



Notes

- Electrical  
 Current Rating: 1A AC/DC  
 Voltage Rating: 125V AC/DC  
 Contact Resistance: 20mΩ Max  
 Insulation Resistance: 100MΩ Min  
 Withstanding Voltage: 250V AC/minute  
 Temperature Range-Operating: -25°C~+85°C
- Material  
 PA66, UL94V-0, White
- Applicable Terminal: FT12509-M
- Mates With: FHG12502 Series

Ordering Information

FHG 125 08 - S XX F 2 W1 B  
 1 2 3 4 5 6 7 8 9

1	Category FHG-Housing	2	Series Number 125-Pitch1.25mm	3	Distinction No. 08	4	Contact Alignment S-Single Row		
5	Circuits XX	6	Type F-Female	7	Material-Resin 2-PA66	8	Color-Resin W1-White	9	Packaging B-PE Bag

Circuits (n)	Part No.	Dimensions(in/mm)			Circuits (n)	Part No.	Dimensions(in/mm)		
		A	B	C			A	B	C
2	FHG12508-S02F2W1B	.049(1.25)	.173(4.40)	.122(3.10)	8	FHG12508-S08F2W1B	.344(8.75)	.469(11.90)	.417(10.60)
3	FHG12508-S03F2W1B	.098(2.50)	.222(5.65)	.171(4.35)	9	FHG12508-S09F2W1B	.394(10.00)	.518(13.15)	.467(11.85)
4	FHG12508-S04F2W1B	.148(3.75)	.272(6.90)	.220(5.60)	10	FHG12508-S10F2W1B	.443(11.25)	.567(14.40)	.516(13.10)
5	FHG12508-S05F2W1B	.197(5.00)	.321(8.15)	.270(6.85)	11	FHG12508-S11F2W1B	.492(12.50)	.616(15.65)	.565(14.35)
6	FHG12508-S06F2W1B	.246(6.25)	.370(9.60)	.319(8.10)	12	FHG12508-S12F2W1B	.541(13.75)	.665(16.90)	.614(15.60)
7	FHG12508-S07F2W1B	.295(7.50)	.419(10.65)	.368(9.35)					

	GENERAL TOLERANCES (UNLESS SPECIFIED)		APPROVE BY FRANK	DATE 18/JUN/13	PART NO. FHG12508-SXXF2W1B	ITEM NO. FHG12508	
	DESIGN UNITS Inch (metric)	X.X ± .012(0.30)	X' ± 5'	CHECKED BY CHERRY			
SCALE 5:1	SIZE A4	X.XX ± .006(0.15)	.XX' ± 1'	DRAWN BY KATE	DATE 18/JUN/13	THIS DRAWING CONTAINS INFORMATION THAT IS PROPRIETARY TO TXGA INDUSTRIAL ELECTRONICS(S.Z)CO.,LTD AND SHOULD NOT BE USED WITHOUT WRITTEN PERMISSION	

1 2 3 4 5 6 7 8