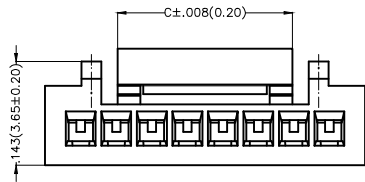
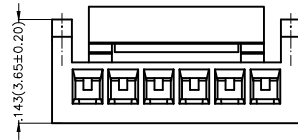


REV	LOCATIONS	DESCRIPTION	DATE	REVISER	APPD

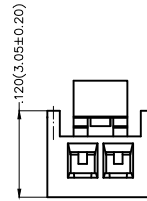
Electrical
 Temperature Range—Operating: -25°C~+85°C
 Material
 Housing: PA66 (UL 94V-0)
 Applicable Terminal: FT12508
 Mates With(Wafer): FWF12513, FWF12514 Series.



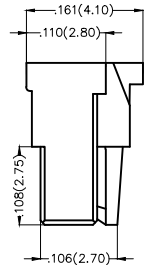
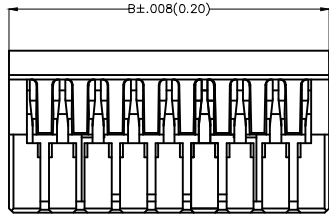
7-15Circuits



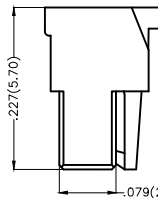
5-6Circuits



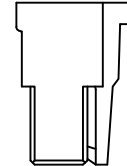
2-4Circuits



7-15Circuits

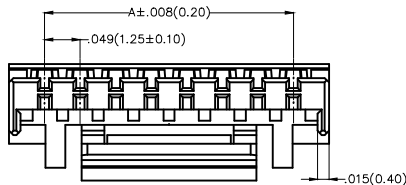


5-6Circuits



2-4Circuits

Circuits (n)	Part No.	Dimensions(in/mm)		
		A	B	C
2	FHG12507-S02M2W1B	.049(1.25)	.151(3.85)	.074(1.90)
3	FHG12507-S03M2W1B	.098(2.50)	.200(5.10)	.114(2.90)
4	FHG12507-S04M2W1B	.147(3.75)	.250(6.35)	.163(4.15)
5	FHG12507-S05M2W1B	.197(5.00)	.295(7.50)	.212(5.35)
6	FHG12507-S06M2W1B	.246(6.25)	.344(8.75)	.261(6.60)
7	FHG12507-S07M2W1B	.295(7.50)	.393(10.00)	.310(7.85)
8	FHG12507-S08M2W1B	.344(8.75)	.442(11.25)	.359(9.10)
9	FHG12507-S09M2W1B	.394(10.00)	.492(12.50)	.411(10.40)
10	FHG12507-S10M2W1B	.443(11.25)	.541(13.75)	.460(11.65)
11	FHG12507-S11M2W1B	.492(12.50)	.590(15.00)	.509(12.90)
12	FHG12507-S12M2W1B	.541(13.75)	.639(16.25)	.560(14.15)
13	FHG12507-S13M2W1B	.590(15.00)	.688(17.50)	.611(15.40)
14	FHG12507-S14M2W1B	.640(16.25)	.738(18.75)	.660(16.65)
15	FHG12507-S15M2W1B	.689(17.50)	.787(20.00)	.710(17.90)



Ordering Information

FHG 125 07 — S XX M 2 W1 B
 1 2 3 4 5 6 7 8 9

1	Category FHG—Housing	2	Series Number 125—Pitch1.25mm	3	Distinction No. 07	4	Row Option D—Double Row	5	Circuits XX
6	Entry Type M—Male	7	Material—Resin 2—PA66	8	Color—Resin W1—White	9	Packaging B—PE Bag		

 THIRD ANGLE PROJECTION	GENERAL TOLERANCES (UNLESS SPECIFIED)		APPROVE BY FRANK	DATE 25/JUN/13	PART NO. FHG12507-SXXM2W1B	ITEM NO. FHG12507	 Leader Of Industry	
	DESIGN UNITS Inch (metric)	X.X±.012(0.30)	X.'±5'	CHECKED BY JACOB	DATE 25/JUN/13	TITLE Wire to Board Pitch 1.25mm(Housing)		REV 0
SCALE 5:1	SIZE A4	X.XX±.006(0.15)	.XX'±1'	DRAWN BY CHERRY	DATE 25/JUN/13	THIS DRAWING CONTAINS INFORMATION THAT IS PROPRIETARY TO TXGA INDUSTRIAL ELECTRONICS(S.Z)CO.,LTD AND SHOULD NOT BE USED WITHOUT WRITTEN PERMISSION		