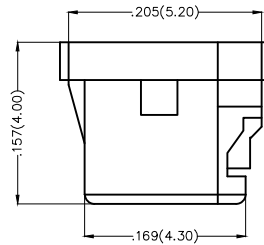
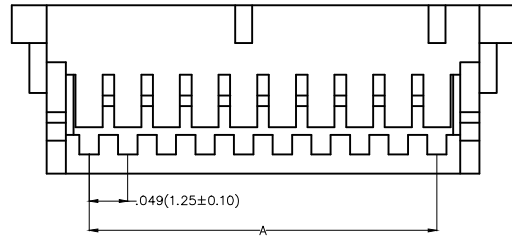


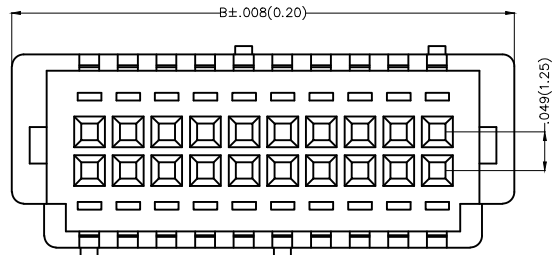
1 2 3 4 5 6 7 8

REV	LOCATIONS	DESCRIPTION	DATE	REVSER	APPD

Electrical
 Temperature Range—Operating: -25°C~+85°C
 Material
 Housing: PA66(UL 94V-0)
 Applicable Terminal: FT12504
 Mates With(Wafer): FWF12511 Series.



Circuits (n)	Part No.	Dimensions(in/mm)	
		A	B
10	FHG12505-D10M2W1B	.197(5.00)	.409(10.40)
20	FHG12505-D20M2W1B	.443(11.25)	.655(16.65)
30	FHG12505-D30M2W1B	.689(17.50)	.901(22.90)
40	FHG12505-D40M2W1B	.934(23.75)	1.148(29.15)



Ordering Information

FHG 125 05 — D XX M 2 C1 B
 1 2 3 4 5 6 7 8 9

1	Category FHG—Housing	2	Series Number 125—Pitch1.25mm	3	Distinction No. 05	4	Row Option D—Double Row	5	Circuits XX
6	Entry Type M—Male	7	Material—Resin 2—PA66	8	Color—Resin C1—Brown	9	Packaging B—PE Bag		

 THIRD ANGLE PROJECTION	GENERAL TOLERANCES (UNLESS SPECIFIED)		APPROVE BY FRANK	DATE 25/JUN/13	PART NO. FHG12505-DXXM2C1B	ITEM NO. FHG12505	 Leader Of Industry	
	DESIGN UNITS Inch (metric)	X.±.012(0.30)	X.±5'	CHECKED BY JACOB	DATE 25/JUN/13	TITLE Wire to Board Pitch 1.25mm(Housing)		REV 0
SCALE 5:1	SIZE A4	X.XX±.006(0.15)	.XX±1'	DRAWN BY CHERRY	DATE 25/JUN/13	THIS DRAWING CONTAINS INFORMATION THAT IS PROPRIETARY TO TXGA INDUSTRIAL ELECTRONICS(S.Z)CO.,LTD AND SHOULD NOT BE USED WITHOUT WRITTEN PERMISSION		

1 2 3 4 5 6 7 8