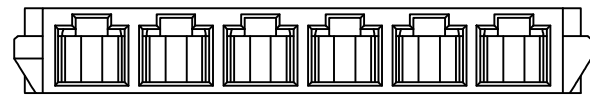
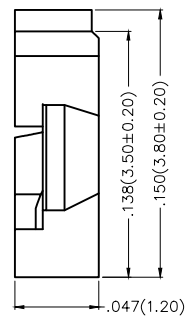
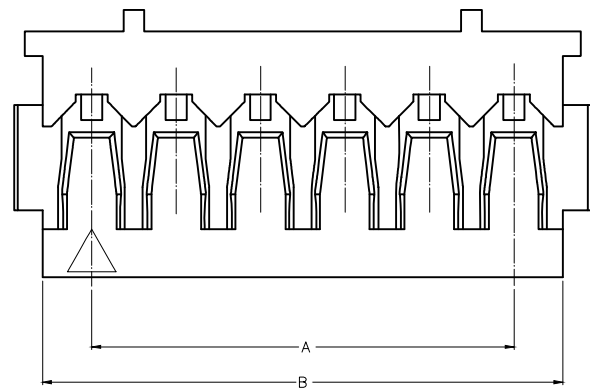
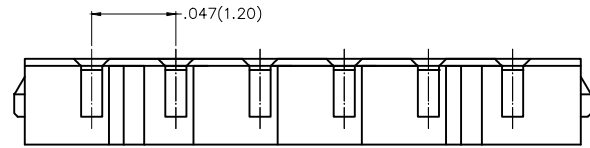


REV	LOCATIONS	DESCRIPTION	DATE	REVISER	APPD

Electrical
Temperature Range—Operating: -25°C~+85°C

Material
Housing: PA66 (UL94V-0)
Applicable Terminal: FT12001
Mates With (Wafer): FWF12001 Series.



Circuits (n)	Part No.	Dimensions(in/mm)	
		A	B
2	FHG12001-S02M2W1B	.047(1.20)	.102(2.60)
3	FHG12001-S03M2W1B	.094(2.40)	.150(3.80)
4	FHG12001-S04M2W1B	.142(3.60)	.196(5.00)
5	FHG12001-S05M2W1B	.189(4.80)	.244(6.20)
6	FHG12001-S06M2W1B	.236(6.00)	.291(7.40)
7	FHG12001-S07M2W1B	.283(7.20)	.338(8.60)

Ordering Information

FHG 120 01 - S XX M 2 W1 B
1 2 3 4 5 6 7 8 9

1	Category FHG—Housing	2	Series Number 120—Pitch1.20mm	3	Distinction No. 01	4	Row Option S—Single row		
5	Circuits XX	6	Type M—Male	7	Material—Resin 2—PA66	8	Color—Resin W1—White	9	Packaging B—PE Bag

 THIRD ANGLE PROJECTION	GENERAL TOLERANCES (UNLESS SPECIFIED)		APPROVE BY FRANK	DATE 05/AUG/16	PART NO. FHG12001-SXXM2W1B	ITEM NO. FHG12001	 Leader Of Industry	
	DESIGN UNITS Inch (metric)	X.±.012(0.30)	.X'±5'	CHECKED BY CHERRY	DATE 05/AUG/16	TITLE Wire to Board Pitch 1.2mm(Housing)		REV 0
SCALE 5:1	SIZE A4	X.XX±.006(0.15)	.XX'±1"	DRAWN BY VERNON	DATE 05/AUG/16	THIS DRAWING CONTAINS INFORMATION THAT IS PROPRIETARY TO TXGA INDUSTRIAL ELECTRONICS(S.Z)CO.,LTD AND SHOULD NOT BE USED WITHOUT WRITTEN PERMISSION		