

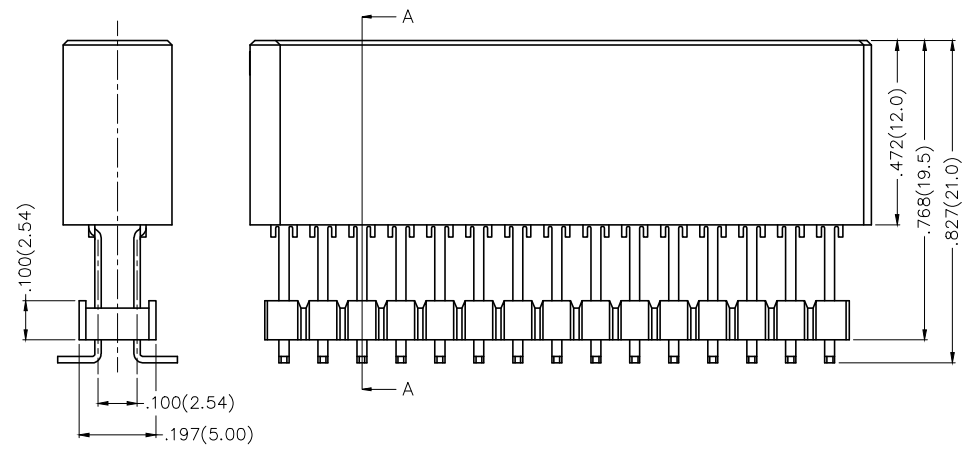
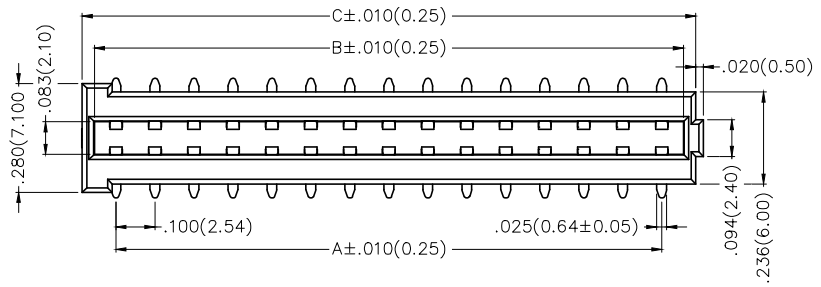
| REV | LOCATIONS | DESCRIPTION | DATE | REVISER | APPD |
|-----|-----------|-------------|------|---------|------|
|     |           |             |      |         |      |

**SPECIFICATIONS**

**Electrical**  
 Current Rating: 3A AC(rms)/DC  
 Voltage Rating: 250V AC(rms)/DC  
 Contact Resistance: 30 mΩ Max.  
 Insulation Resistance: 1000 MΩ Min.  
 Withstanding Voltage: 500V AC r.m.s  
 Temperature Range—Operating: -25°C~+85°C

**Material and Plating**  
 Housing: PA9T (UL 94V-0)  
 Contacts: Brass/ Gold plated  
 Pin header: PA6T (UL 94V-0)

| Circuits (n) | Part No.             | Dimensions(in/mm) |              |              |
|--------------|----------------------|-------------------|--------------|--------------|
|              |                      | A                 | B            | C            |
| 20           | FBB25401-F20S1XX5K6K | .900(22.86)       | 1.011(25.68) | 1.074(27.28) |
| 26           | FBB25401-F26S1XX5K6K | 1.200(30.48)      | 1.311(33.30) | 1.374(34.90) |
| 30           | FBB25401-F30S1XX5K6K | 1.400(35.56)      | 1.511(38.38) | 1.574(39.98) |
| 32           | FBB25401-F32S1XX5K6K | 1.500(38.10)      | 1.611(40.92) | 1.674(42.52) |
| 36           | FBB25401-F36S1XX5K6K | 1.700(43.18)      | 1.811(46.00) | 1.874(47.60) |

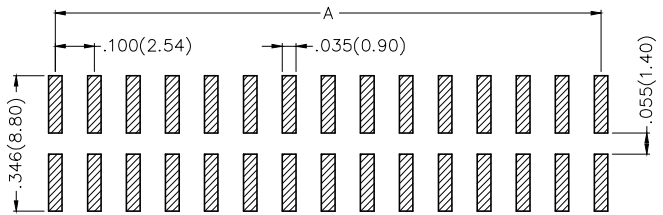


Section A-A


**Ordering Information**

FBB 254 01 — F XX S 1 XX 5 K6 K  
 1 2 3 4 5 6 7 8 9 10 11

|                                  |   |                            |                            |                        |                                  |
|----------------------------------|---|----------------------------|----------------------------|------------------------|----------------------------------|
| 1 Category<br>FBB—Board to Board | 2 Series Number<br>254—Pitch 2.54mm   | 3 Distinction No.<br>01    | 4 Type<br>F—Female         | 5 Circuits<br>XX       | 6 Entry Angle<br>S—180° Vertical |
| 7 Plating<br>1—Gold plated       | 8 Thickness of Plating<br>00—Gold flash<br>01—1μ"<br>Custom plate available | 9 Material—Resin<br>5—PA9T | 10 Color—Resin<br>K6—Black | 11 Packaging<br>K—Tray |                                  |



**Recommended P.C. Board Layout**  
 General Tolerances: ±0.05mm

|                        |                                       |  |  |                      |  |  |   |
|------------------------|---------------------------------------|--|--|----------------------|--|--|---|
| THIRD ANGLE PROJECTION | GENERAL TOLERANCES (UNLESS SPECIFIED) |  | APPROVE BY<br>FRANK                      | DATE<br>21/DEC/18    | PART NO.<br>FBB25401-FXXS1XX5K6K   | ITEM NO.<br>FBB25401                                     | <br>Leader Of Industry |
|                        | DESIGN UNITS<br>Inch (metric)         | X.±.012(0.30)<br>X.X±.008(0.20)<br>X.XX±.006(0.15)<br>X.XXX±.004(0.10) | X.±5°<br>.X'±2°<br>.XX'±1°<br>.XXX'±0.5° | CHECKED BY<br>CHERRY | DATE<br>21/DEC/18  | TITLE<br>Board to Board<br>Pitch 2mm 180° Vertical (SMT) |   |
| SCALE<br>5:1           | SIZE<br>A4                            |  | DRAWN BY<br>KATE                         | DATE<br>21/DEC/18    | THIS DRAWING CONTAINS INFORMATION THAT IS PROPRIETARY TO TXGA INDUSTRIAL ELECTRONICS(S.Z)CO.,LTD AND SHOULD NOT BE USED WITHOUT WRITTEN PERMISSION |  | REV 0 SHEET NO. 1/1   |