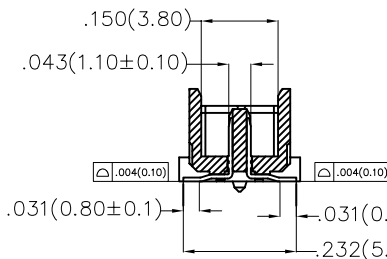
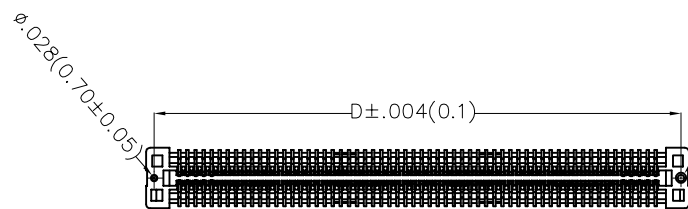
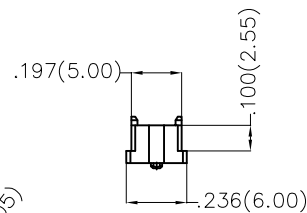
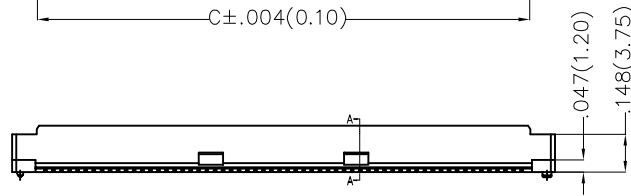
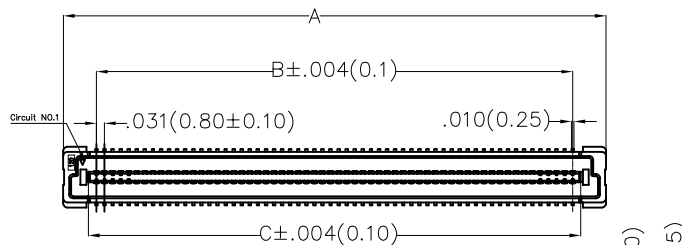
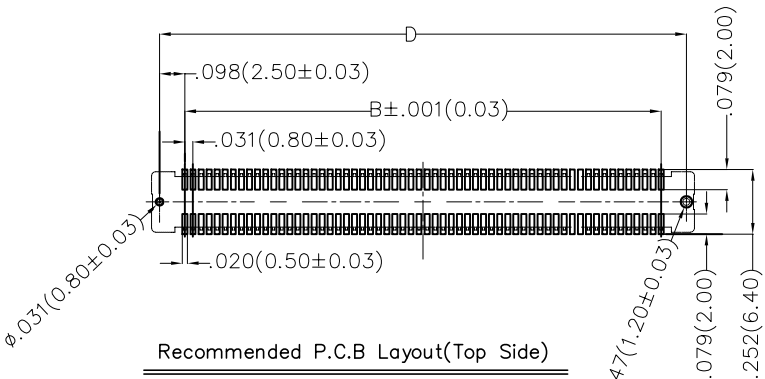


REV	LOCATIONS	DESCRIPTION	DATE	REVISER	APPD



Section A-A  
Scale 2:1



Recommended P.C.B Layout (Top Side)  
(PCB Board Tolerance±0.05)

**Electrical**  
 Current Rating: 0.5A AC(rms)/DC  
 Voltage Rating: 50V AC(rms)/DC  
 Contact Resistance: 50 mΩ Max.  
 Insulation Resistance: 500 MΩ Min.  
 Withstanding Voltage: 200V AC r.m.s  
 Temperature Range—Operating: -35°C~+85°C


**Material and Plating**  
 Housing: LCP (UL94V-0)  
 Contacts Pin: Phosphor Bronze  
 Plating: Gold plated

Circuits (n)	Part No.	Dimensions(in/mm)			
		A	B	C	D
40	FBB08006-M40S1XX3W5M	.858(21.80)	.598(15.20)	.661(16.80)	.795(20.20)
50	FBB08006-M50S1XX3W5M	1.016(25.80)	.756(19.20)	.819(20.80)	.953(24.20)
60	FBB08006-M60S1XX3W5M	1.173(29.80)	.913(23.20)	.976(24.80)	1.110(28.20)
80	FBB08006-M80S1XX3W5M	1.488(37.80)	1.228(31.20)	1.291(32.80)	1.425(36.20)
100	FBB08006-M100S1XX3W5M	1.803(45.80)	1.543(39.20)	1.606(40.80)	1.470(44.20)
120	FBB08006-M120S1XX3W5M	2.118(53.80)	1.858(47.20)	1.921(48.80)	2.055(52.20)

### Ordering Information

FBB 080 06 — M XX S 1 XX 3 W5 M  
 1 2 3 4 5 6 7 8 9 10 11

1 Category FBB—Board To Board	2 Series Number 080—Pitch0.8mm	3 Distinction No. 06	4 Type M—Male	5 Circuits XX	6 Entry Angle S—180° Vertical
7 Plating 1—Gold plated	8 Thickness of Plating 01—1μ" 05—5μ" Custom plate available	9 Material—Resin 3—LCP	10 Color—Resin W5—Natural	11 Packaging M—Reel	

THIRD ANGLE PROJECTION	GENERAL TOLERANCES (UNLESS SPECIFIED)		APPROVE BY FRANK	DATE 14/AUG/19	PART NO. FBB08006-MXXS1XX3W5M	ITEM NO. FBB08006	 Leader Of Industry
	DESIGN UNITS Inch (metric)	X.±.012(0.30) X.X±.008(0.20) X.XX±.006(0.15) X.XXX±.004(0.10)	X.'±5' X.'±2' .XX'±1' .XXX'±0.5'	CHECKED BY CHERRY	DATE 14/AUG/19	TITLE Board to Board Pitch 0.8mm 180° Vertical (SMT)	
SCALE 5:1	SIZE A4		DRAWN BY ZOEY	DATE 14/AUG/19	THIS DRAWING CONTAINS INFORMATION THAT IS PROPRIETARY TO TXGA INDUSTRIAL ELECTRONICS(S.Z.)CO.,LTD AND SHOULD NOT BE USED WITHOUT WRITTEN PERMISSION		SHEET NO. 1/1