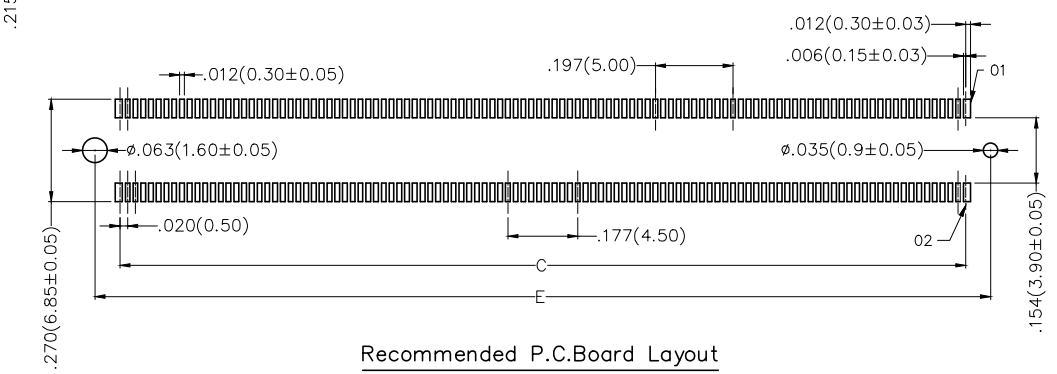
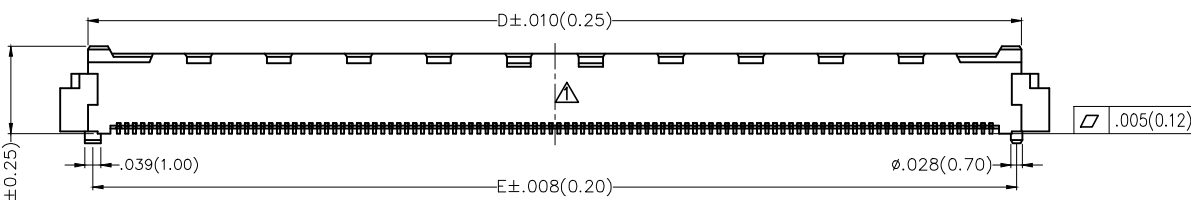
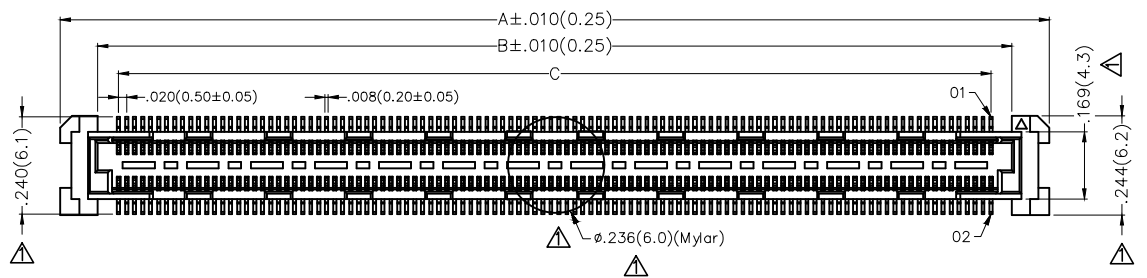


REV	LOCATIONS	DESCRIPTION	DATE	REVISER	APPD
1	▲	1. Add dimensions 2. Structure change	03/JUN/20	KATE	CHERRY

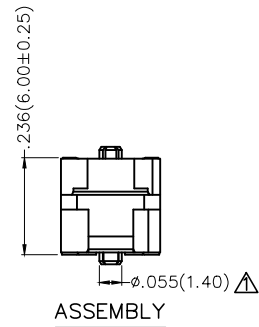
**SPECIFICATIONS**

**Electrical**  
 Current Rating: 0.5A AC(rms)/DC  
 Voltage Rating: 50V AC(rms)/DC  
 Contact Resistance: 55 mΩ Max.  
 Insulation Resistance: 100 MΩ Min.  
 Withstanding Voltage: 200V AC r.m.s  
 Temperature Range—Operating: -40°C~+85°C

**Material and Plating**  
 Housing: LCP (UL 94V-0) Black  
 Contacts: Phosphor Bronze/ Selective gold in contact area, tin on tail



**Recommended P.C.Board Layout**  
 General Tolerances: ±.002(0.05)



**Ordering Information**

FBB 050 09 — F XXX S 3 XX 3 K6 M  
 1 2 3 4 5 6 7 8 9 10 11

1 Category FBB—Board to Board	2 Series Number 050—Pitch 0.50mm	3 Distinction No. 09	4 Type F—Female	5 Circuits XXX	6 Entry Angle S—180° Vertical
7 Plating 3—Selective gold in contact area, tin on tail	8 Thickness of Plating 01—1μ" 03—3μ" Custom plate available	9 Material—Resin 3—LCP	10 Color—Resin K6—Black	11 Packaging M—Reel	

 THIRD ANGLE PROJECTION	GENERAL TOLERANCES (UNLESS SPECIFIED)		APPROVE BY FRANK	DATE 19/AUG/19	PART NO. FBB05009—FXXXS3XX3K6M	ITEM NO. FBB05009	 Leader Of Industry
	X.X±.012(0.30)	X.X±5°	CHECKED BY CHERRY	DATE 19/AUG/19	TITLE Board to Board Pitch 0.5mm 180° Vertical (SMT)		
DESIGN UNITS Inch (metric)	X.X±.008(0.20)	.X±2°	DRAWN BY Aubrey	DATE 19/AUG/19	THIS DRAWING CONTAINS INFORMATION THAT IS PROPRIETARY TO TXGA INDUSTRIAL ELECTRONICS(S.Z)CO.,LTD AND SHOULD NOT BE USED WITHOUT WRITTEN PERMISSION		
SCALE 5:1	SIZE A4	X.XX±.006(0.15)					
		X.XXX±.004(0.10)					

1 2 3 4 5 6 7 8

REV	LOCATIONS	DESCRIPTION	DATE	REVISER	APPD

A

A

B

B

C

C

D

D



E

E

F

F

Circuits (n)	Part No.	Dimensions(in/mm)				
		A	B	C	D	E
120	FBB05009-F120S3XX3K6M	1.449(36.80)	1.264(32.10)	1.161(29.50)	1.311(33.30)	1.287(32.70)
220	FBB05009-F220S3XX3K6M	2.433(61.80)	2.248(57.10)	2.146(54.50)	2.295(58.30)	2.272(57.70)

 THIRD ANGLE PROJECTION	GENERAL TOLERANCES (UNLESS SPECIFIED)		APPROVE BY FRANK	DATE 19/AUG/19	PART NO. FBB05009-FXXXS3XX3K6M	ITEM NO. FBB05009	 Leader Of Industry	
	DESIGN UNITS Inch (metric)	X.±.012(0.30) X.X±.008(0.20) X.XX±.006(0.15) X.XXX±.004(0.10)	X.±5° .X±2° .XX±1° .XXX±0.5°	CHECKED BY CHERRY	DATE 19/AUG/19	TITLE Board to Board Pitch 0.5mm 180° Vertical (SMT)		
SCALE 5:1	SIZE A4	DRAWN BY Aubrey		DATE 19/AUG/19	THIS DRAWING CONTAINS INFORMATION THAT IS PROPRIETARY TO TXGA INDUSTRIAL ELECTRONICS(S.Z)CO.,LTD AND SHOULD NOT BE USED WITHOUT WRITTEN PERMISSION		REV 1	SHEET NO. 2/2

1 2 3 4 5 6 7 8