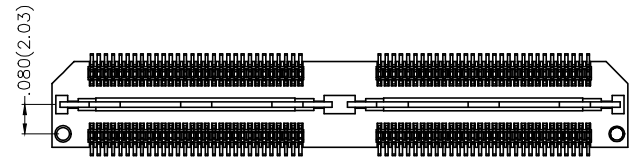
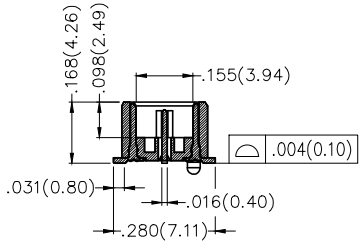
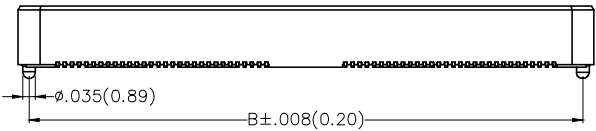
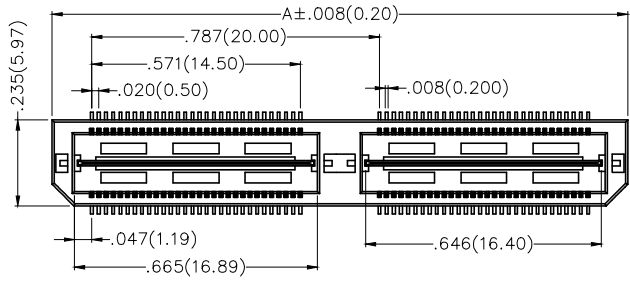


REV	LOCATIONS	DESCRIPTION	DATE	REVISER	APPD

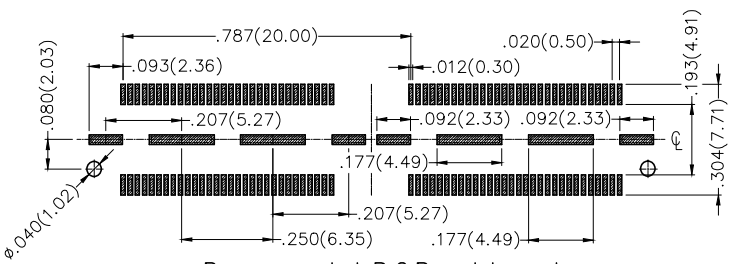
SPECIFICATIONS

Electrical
 Current Rating: 0.5A AC(rms)/DC
 Voltage Rating: 50V AC(rms)/DC
 Contact Resistance: 50 mΩ Max.
 Insulation Resistance: 100 MΩ Min.
 Withstanding Voltage: 200V AC r.m.s
 Temperature Range-Operating: -35°C~+85°C

Material and Plating
 Housing: LCP (UL 94V-0) Black
 Contacts: Phosphor Bronze/ Selective gold in contact area, matte tin on tail



Circuits (n)	Part No.	Dimensions(in/mm)	
		A	B
60	FBB05007-M60S3XX3K6M	.787(20.00)	.728(18.48)
120	FBB05007-M120S3XX3K6M	1.575(40.00)	1.515(38.48)




Recommended P.C.Board Layout
 General Tolerances: ±.002(0.05)

Ordering Information

FBB 050 07 — M XX S 3 XX 3 K6 M
 1 2 3 4 5 6 7 8 9 10 11

1 Category FBB-Board to Board	2 Series Number 050-Pitch0.50mm	3 Distinction No. 07	4 Type M-Male	5 Circuits XX	6 Entry Angle S-180° Vertical
7 Plating 3-Selective gold in contact area, tin on tail	8 Thickness of Plating 03-3μ" 05-5μ" Custom plate available	9 Material-Resin 3-LCP	10 Color-Resin K6-Black	11 Packaging M-Reel	

THIRD ANGLE PROJECTION	GENERAL TOLERANCES (UNLESS SPECIFIED)		APPROVE BY FRANK	DATE 21/DEC/18	PART NO. FBB05007-MXXS3XX3K6M	ITEM NO. FBB05007	 Leader Of Industry
	DESIGN UNITS Inch (metric)	X.±.012(0.30) X.X±.008(0.20) X.XX±.006(0.15) X.XXX±.004(0.10)	X.±5° .X'±2° .XX'±1° .XXX'±0.5°	CHECKED BY CHERRY	DATE 21/DEC/18	TITLE Board to Board Pitch 0.5mm 180° Vertical (SMT)	
SCALE 5:1	SIZE A4		DRAWN BY KATE	DATE 21/DEC/18	THIS DRAWING CONTAINS INFORMATION THAT IS PROPRIETARY TO TXGA INDUSTRIAL ELECTRONICS(S.Z)CO.,LTD AND SHOULD NOT BE USED WITHOUT WRITTEN PERMISSION		REV 0 SHEET NO. 1/1