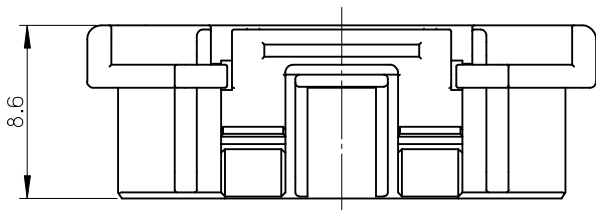
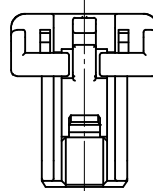


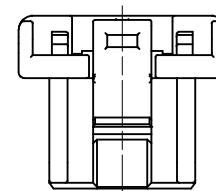
10 9 8 7 6 5 4 3 2 1



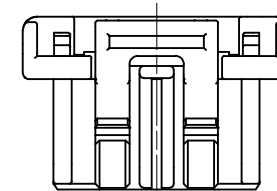
8.6



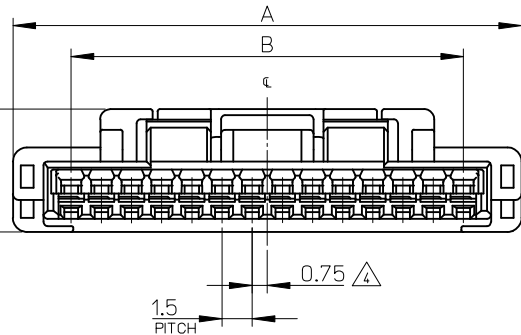
2,3極形状 (1ロック)
FIGURE OF 2.3 CIRCUIT (1 LOCK)



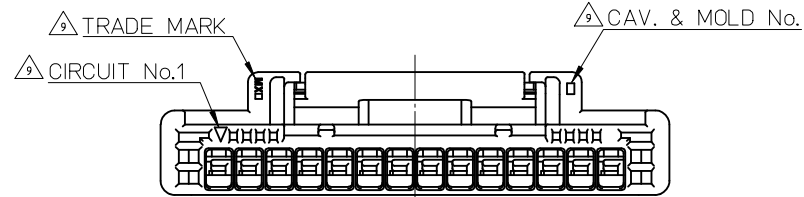
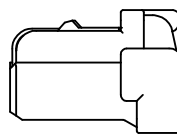
4,5極形状 (1ロック)
FIGURE OF 4.5 CIRCUIT (1 LOCK)



6極形状 (2ロック)
FIGURE OF 6 CIRCUIT (2 LOCK)



0.75
1.5 PITCH



NOTES

1. 材料 MATERIAL
ハウジング : PBT , UL94-V0
HOUSING : PBT , UL94-V0
2. 嵌合相手 : 502584,502585,503159,503175,503339,503340,503395,505405 シリーズ
MATE WITH : 502584,502585,503159,503175,503339,503340,503395,505405 SERIES.
3. 適合ターミナル : 502579, 503429 シリーズ
APPLICABLE TERMINAL : 502579, 503429 SERIES.

△ 極数/2=偶数極の場合に適用
APPLY FOR (CIRCUIT/2)=EVEN

△ 注文番号
ORDER No.

502578 - * * * * *

極数 ↑ ↑ 色
CIRCUIT SIZE COLOR

6. 本製品のプラスチック部に黒点・白点等が確認される場合や色合いが異なる場合がありますが、製品性能に影響はありません。
THERE IS NO INFLUENCE IN THE PRODUCT PERFORMANCE THOUGH THE BLACK AND WHITE SPOT ETC. MIGHT BE CONFIRMED TO THE PLASTIC PART OF THIS PRODUCT AND THE SHADE MIGHT BE DIFFERENT.
7. アプリケーション仕様書(コネクタ取扱説明書) : AS-502578-001, AS-502578-002
APPLICATION SPECIFICATIONS (CONNECTOR MANUAL): AS-502578-001, AS-502578-002
8. 製品仕様書 : PS-502584-001
Product specification: PS-502584-001

9. トレードマーク : Mプラス 2文字の製造工場を示すアルファベットにて表示。但し、"J"はJAPANを"L"はMALAYSIAを示す。(例 MXJ 又はMXL)
金型番号 : アルファベット1文字にて表示。(例 1A, 12A, 1B, 12B)
FORMED BY M AND FROM 1 TO 2 MORE LETTER OF ALPHABET WHICH MEAN THE MANUFACTORY.
BUT "J" MEANS JAPAN. "L" MEANS MALAYSIA (TO TRADE MARK) (e.g. MXJ OR MXL).
AND BY 1 - 2 DIGIT NUMBER (TO CAVITY NO.)
AND BY 1 LETTER OF ALPHABET (TO MOLD NO.)(e.g. 1A, 12A, 1B, 12B).
10. ELV 及び RoHS 適合品
ELV AND RoHS COMPLIANT

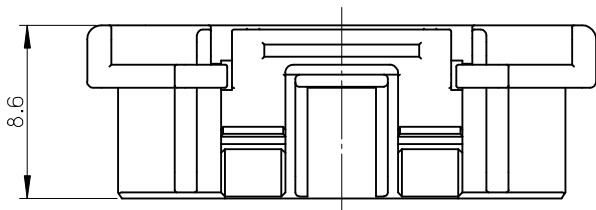
| No. | COLOR | CIRCUIT |
|-----|--------------------|---------|
| 00 | ベージュ BEIGE | 2~15 |
| 01 | 黒 BLACK | |
| 02 | 赤 RED | |
| 03 | 黄 YELLOW | |
| 04 | 青 BLUE | |
| 05 | 桃 PINK | |
| 06 | 緑 GREEN | |
| 07 | 茶 BROWN | |
| 08 | 橙 ORANGE | |
| 09 | 紫 VIOLET | |
| 11 | 灰 GRAY | 3~5 |
| 16 | 黄緑 YELLOWISH GREEN | |
| 14 | 水 PALE BLUE | 2~5 |

| | | | |
|------|------|------------------------------|-------------|
| 21 | 26.8 | 50257815** | 15 |
| 19.5 | 25.3 | ↑ 14** | 14 |
| 18 | 23.8 | 13** | 13 |
| 16.5 | 22.3 | 12** | 12 |
| 15 | 20.8 | 11** | 11 |
| 13.5 | 19.3 | 10** | 10 |
| 12 | 17.8 | 09** | 9 |
| 10.5 | 16.3 | 08** | 8 |
| 9 | 14.8 | 07** | 7 |
| 7.5 | 13.3 | 06** | 6 |
| 6 | 11.8 | 05** | 5 |
| 4.5 | 10.3 | 04** | 4 |
| 3 | 8.8 | ↓ 03** | 3 |
| 1.5 | 7.3 | 50257802** | 2 |
| B | A | △ PLASTIC BAG △ ORDER No. | CIRCUIT No. |

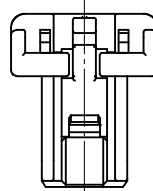
| | | | | | | | |
|--|---------------------------------------|---|----------------------------|-------------------|---|------------------------|------------------------|
| REVISED EC NO: J2015-0528 DRWN: TAKAIKE 2014/10/20 CHKD: SASAKAWA 2015/02/16 APPR: NUKITA 2015/02/16 | GENERAL TOLERANCES (UNLESS SPECIFIED) | | DIMENSION STYLE MM ONLY | | SCALE 4:1 | DESIGN UNITS METRIC | THIRD ANGLE PROJECTION |
| | 0.25 UNDER | ±0.03 | DRAWN BY N. ITO | DATE '07/07/09 | TITLE 1.5MM W/B CONN. SINGLE PLUG HOUSING | | |
| | 0.25 OVER 0.5 UNDER | ±0.05 | CHECKED BY K. ASAKAWA | DATE '07/07/10 | | | |
| | 0.5 OVER 1.0 UNDER | ±0.1 | APPROVED BY Y. ITO | DATE '07/07/10 | | | |
| 1.0 OVER 10 UNDER | ±0.2 | MATERIAL NO. | | DOCUMENT NO. | SHEET NO. | | |
| 10 OVER 30 UNDER | ±0.25 | SEE TABLE | | SD-502578-001 | | 1 OF 1 | |
| 30 OVER | ±0.3 | THIS DRAWING CONTAINS INFORMATION THAT IS PROPRIETARY TO MOLEX INCORPORATED AND SHOULD NOT BE USED WITHOUT WRITTEN PERMISSION | | | | | |
| ANGULAR ±3 ° | | DRAFT WHERE APPLICABLE MUST REMAIN WITHIN DIMENSIONS | | SIZE A3 | | | |

9 8 7 6 5 4 3 2 1

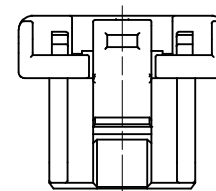
10 9 8 7 6 5 4 3 2 1



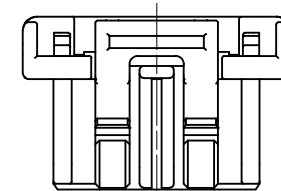
8.6



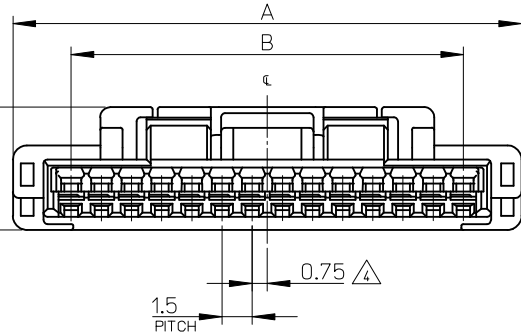
2,3極形状 (1ロック)
FIGURE OF 2.3 CIRCUIT (1 LOCK)



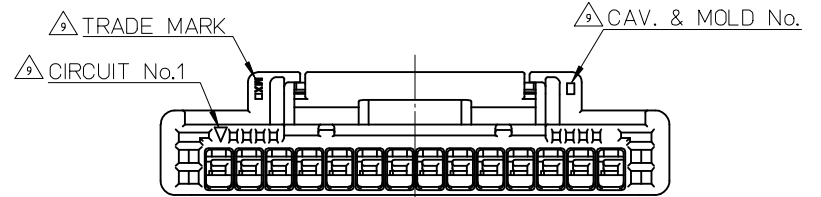
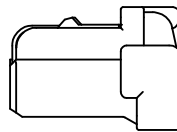
4,5極形状 (1ロック)
FIGURE OF 4.5 CIRCUIT (1 LOCK)



6極形状 (2ロック)
FIGURE OF 6 CIRCUIT (2 LOCK)



1.5 PITCH



NOTES

1. 材料 MATERIAL
ハウジング : PBT , UL94-V0
HOUSING : PBT , UL94-V0
2. 嵌合相手 : 502584,502585,503159,503175,503339,503340,503395,505405 シリーズ
MATE WITH : 502584,502585,503159,503175,503339,503340,503395,505405 SERIES.
3. 適合ターミナル : 502579, 503429 シリーズ
APPLICABLE TERMINAL : 502579, 503429 SERIES.

△ 極数/2=偶数極の場合に適用
APPLY FOR (CIRCUIT/2)=EVEN

△ 注文番号
ORDER No.

502578 - * * * * *

CIRCUIT SIZE 極数 色 COLOR

6. 本製品のプラスチック部に黒点・白点等が確認される場合や色合いが異なる場合がありますが、製品性能に影響はありません。
THERE IS NO INFLUENCE IN THE PRODUCT PERFORMANCE THOUGH THE BLACK AND WHITE SPOT ETC. MIGHT BE CONFIRMED TO THE PLASTIC PART OF THIS PRODUCT AND THE SHADE MIGHT BE DIFFERENT.
7. アプリケーション仕様書(コネクタ取扱説明書) : AS-502578-001, AS-502578-002
APPLICATION SPECIFICATIONS (CONNECTOR MANUAL): AS-502578-001, AS-502578-002
8. 製品仕様書 : PS-502584-001
Product specification: PS-502584-001

9. トレードマーク : Mプラス 2文字の製造工場を示すアルファベットにて表示。但し、"J"はJAPANを"L"はMALAYSIAを示す。(例 MXJ 又はMXL)
金型番号 : アルファベット1文字にて表示。(例 1A, 12A, 1B, 12B)
FORMED BY M AND FROM 1 TO 2 MORE LETTER OF ALPHABET WHICH MEAN THE MANUFACTORY.
BUT "J" MEANS JAPAN. "L" MEANS MALAYSIA (TO TRADE MARK) (e.g. MXJ OR MXL).
AND BY 1 - 2 DIGIT NUMBER (TO CAVITY NO.)
AND BY 1 LETTER OF ALPHABET (TO MOLD NO.)(e.g. 1A, 12A, 1B, 12B).
10. ELV 及び RoHS 適合品
ELV AND RoHS COMPLIANT

| No. | COLOR | CIRCUIT |
|-----|--------------------|---------|
| 00 | ベージュ BEIGE | 2~15 |
| 01 | 黒 BLACK | |
| 02 | 赤 RED | |
| 03 | 黄 YELLOW | |
| 04 | 青 BLUE | |
| 05 | 桃 PINK | |
| 06 | 緑 GREEN | |
| 07 | 茶 BROWN | |
| 08 | 橙 ORANGE | |
| 09 | 紫 VIOLET | |
| 11 | 灰 GRAY | 3~5 |
| 16 | 黄緑 YELLOWISH GREEN | |
| 14 | 水 PALE BLUE | 2~5 |

| | | | |
|------|------|--------------------------|-------------|
| 21 | 26.8 | 50257815** | 15 |
| 19.5 | 25.3 | 14** | 14 |
| 18 | 23.8 | 13** | 13 |
| 16.5 | 22.3 | 12** | 12 |
| 15 | 20.8 | 11** | 11 |
| 13.5 | 19.3 | 10** | 10 |
| 12 | 17.8 | 09** | 9 |
| 10.5 | 16.3 | 08** | 8 |
| 9 | 14.8 | 07** | 7 |
| 7.5 | 13.3 | 06** | 6 |
| 6 | 11.8 | 05** | 5 |
| 4.5 | 10.3 | 04** | 4 |
| 3 | 8.8 | 03** | 3 |
| 1.5 | 7.3 | 50257802** | 2 |
| B | A | PLASTIC BAG ORDER No. | CIRCUIT No. |

| | | | | | | | |
|--|---------------------------------------|---|----------------------------|-------------------|---|------------------------|---------------------------|
| REVISED EC NO: J2015-0528 DRWN: TAKAIKE 2014/10/20 CHKD: SASAKAWA 2015/02/16 APPR: NUKITA 2015/02/16 | GENERAL TOLERANCES (UNLESS SPECIFIED) | | DIMENSION STYLE MM ONLY | | SCALE 4:1 | DESIGN UNITS METRIC | THIRD ANGLE PROJECTION |
| | 0.25 UNDER | ±0.03 | DRAWN BY N. ITO | DATE '07/07/09 | TITLE 1.5MM W/B CONN. SINGLE PLUG HOUSING | | |
| | 0.25 OVER 0.5 UNDER | ±0.05 | CHECKED BY K. ASAKAWA | DATE '07/07/10 | | | |
| | 0.5 OVER 1.0 UNDER | ±0.1 | APPROVED BY Y. ITO | DATE '07/07/10 | | | |
| 1.0 OVER 10 UNDER | ±0.2 | MATERIAL NO. | | DOCUMENT NO. | SHEET NO. | | |
| 10 OVER 30 UNDER | ±0.25 | SEE TABLE | | SD-502578-001 | | 1 OF 1 | |
| 30 OVER | ±0.3 | THIS DRAWING CONTAINS INFORMATION THAT IS PROPRIETARY TO MOLEX INCORPORATED AND SHOULD NOT BE USED WITHOUT WRITTEN PERMISSION | | | | | |
| ANGULAR ±3 ° | | DRAFT WHERE APPLICABLE MUST REMAIN WITHIN DIMENSIONS | | | | | |

9 8 7 6 5 4 3 2 1