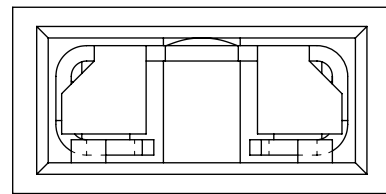
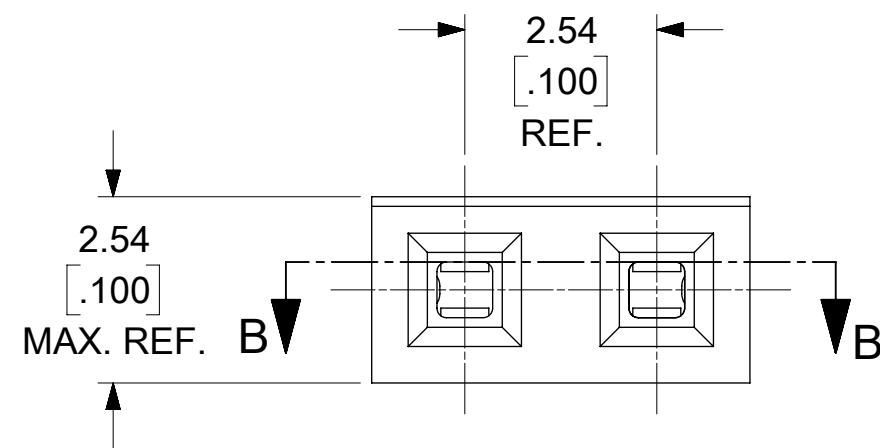
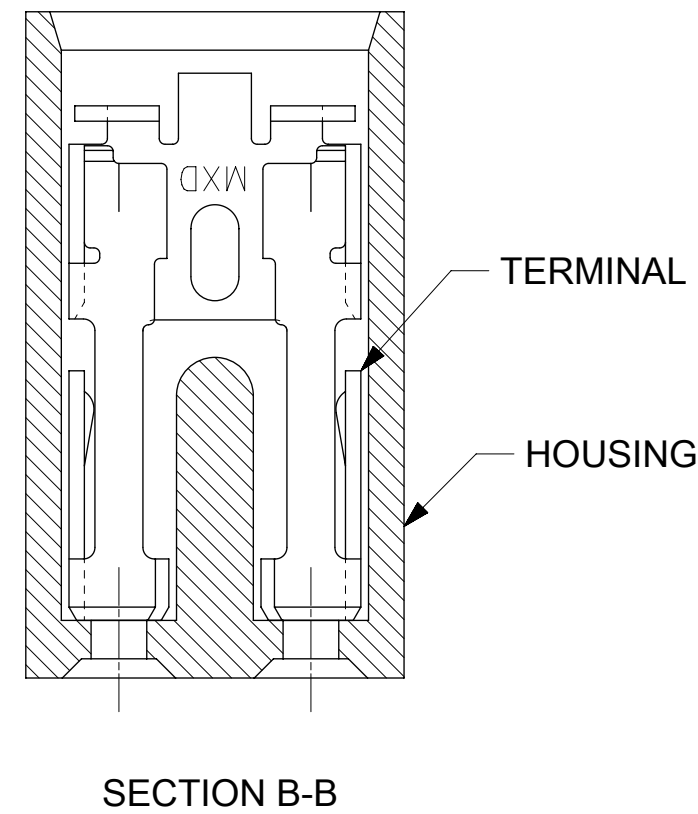
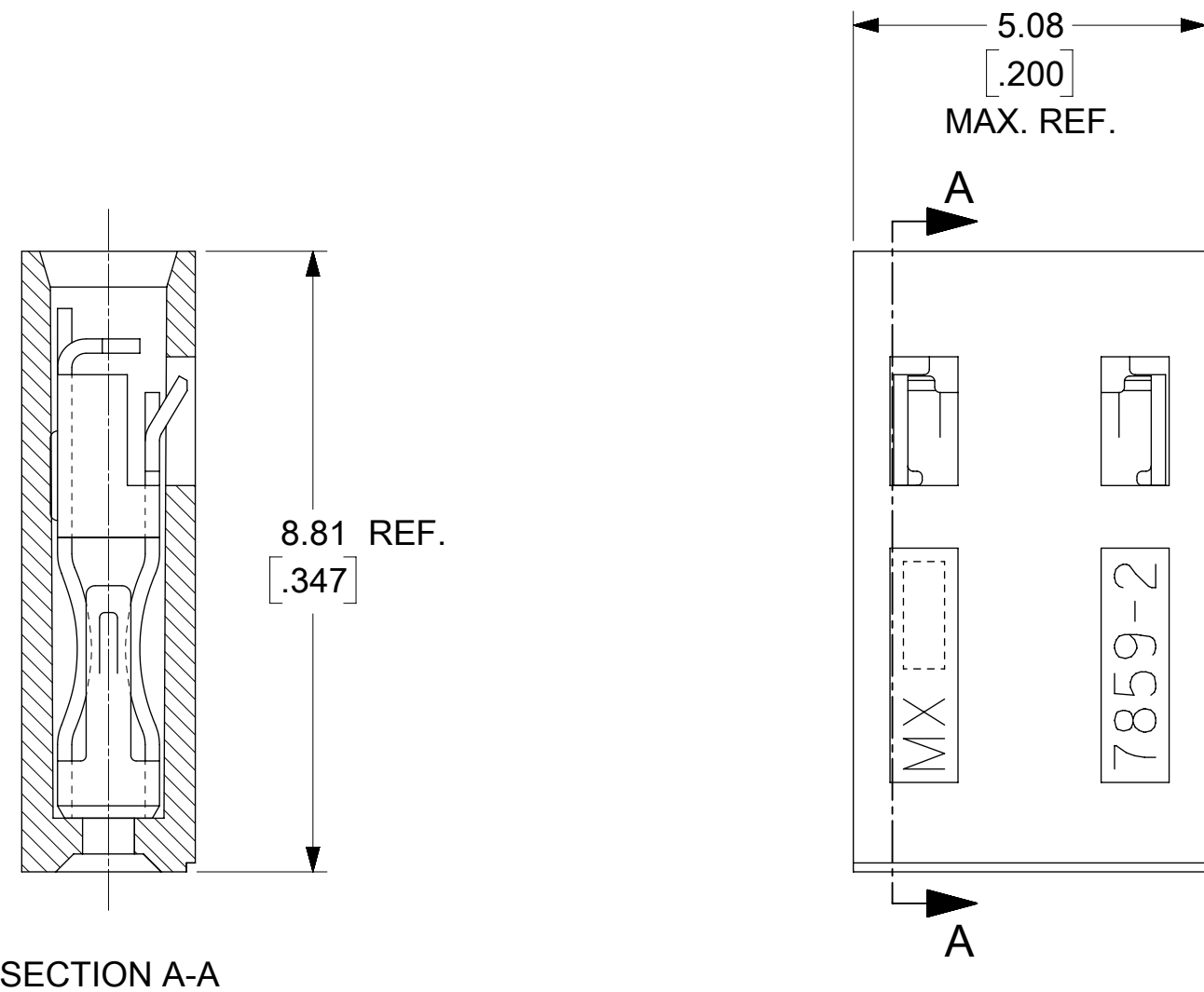


TERMINAL WITH PIN STOP



EDP NO.	ENG. NO.	FINISH
15-38-1026	A-7859-2A164	TIN OVERALL
15-29-1025	A-7859-2A554	15 GOLD
15-29-1027	A-7859-2A561	30 GOLD
7859-1027		30 GOLD



FINISH SPECIFICATION

TIN OVERALL - 3.89 μ m/[0.000150] MINIMUM TIN PLATE OVER
 1.27 μ m/[0.000050] MINIMUM NICKEL UNDERPLATE.
 15 GOLD - 0.389 μ m/[0.000015] MINIMUM GOLD PLATE IN SELECT AREA OVER
 1.27 μ m/[0.000050] MINIMUM NICKEL UNDERPLATE OVERALL.
 30 GOLD - 0.762 μ m/[0.000030] MINIMUM GOLD PLATE IN SELECT AREA OVER
 1.27 μ m/[0.000050] MINIMUM NICKEL UNDERPLATE OVERALL.

NOTES:

- MATERIAL:
 HOUSING: GLASS FILLED POLYESTER; 94V-0; COLOR: BLACK
 TERMINAL: PHOSPHOR BRONZE ALLOY.
- THIS PRODUCT CONFORMS TO MOLEX PRODUCT SPEC. PS-7859.
- TO BE USED WITH 0.64/[0.025] SQUARE PINS.
- MINIMUM MATING PIN LENGTH: 5.08/[0.200]
 MAXIMUM MATING PIN LENGTH: 6.86/[0.270]
- PRODUCT IS PACKAGED IN BOXES PER PK-70873-0815.

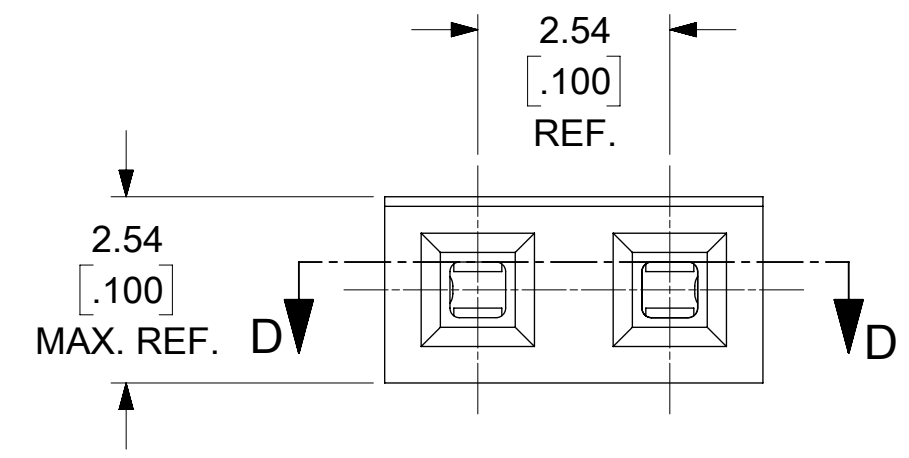
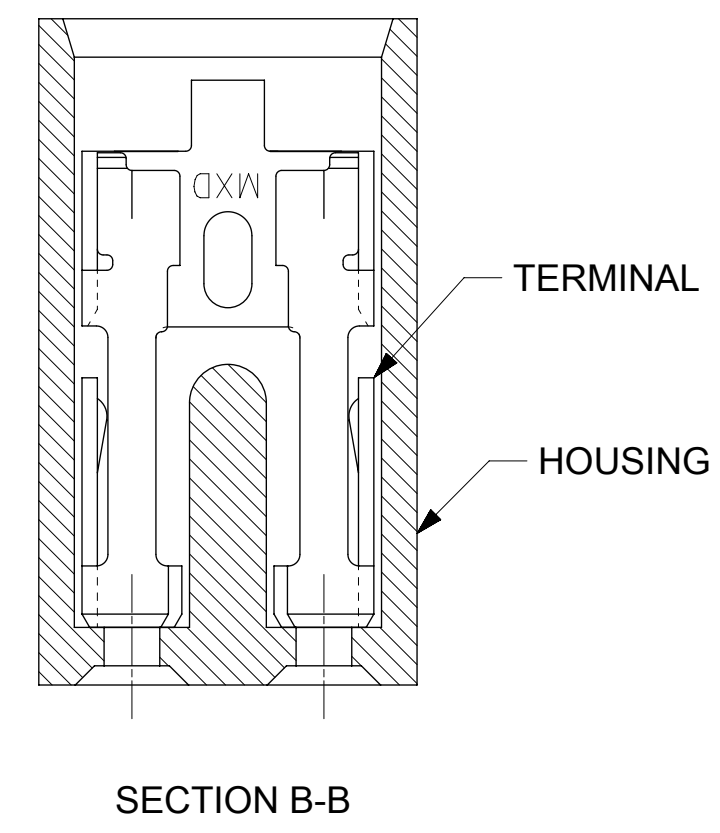
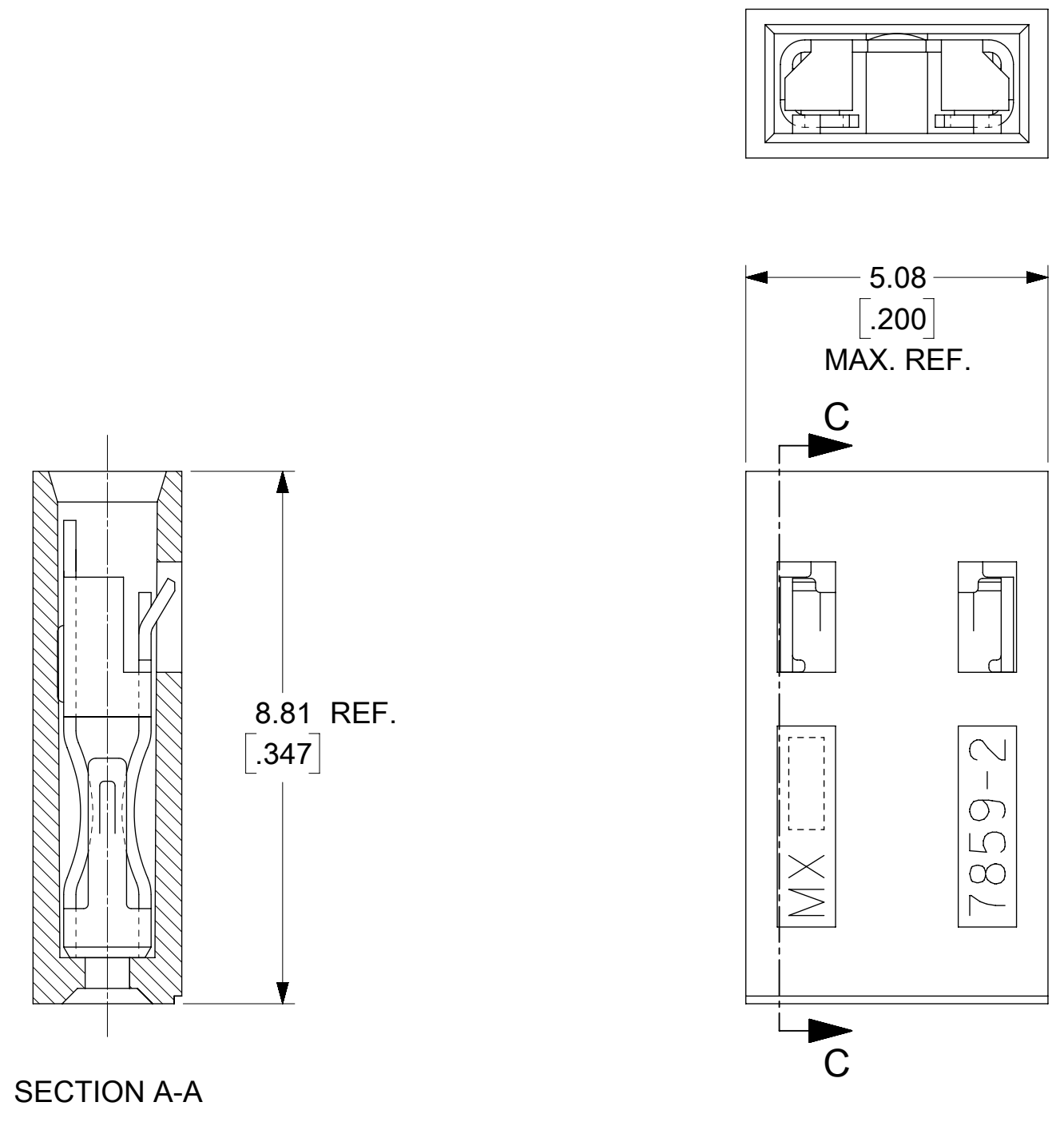
NOTE FOR LEAD FREE CONVERSION:

THE PRIMARY SHIPPING CARTON WILL BE LABELED "COMPLIANT TO RoHS DIRECTIVE 2002/95/EC AND ELV ANNEX II OF DIRECTIVE 2000/53/EC". CARTONS WITHOUT THIS LABEL MAY CONTAIN PRODUCT WITH LEAD.

SYMBOLS		THIS DRAWING CONTAINS INFORMATION THAT IS PROPRIETARY TO MOLEX ELECTRONIC TECHNOLOGIES, LLC AND SHOULD NOT BE USED WITHOUT WRITTEN PERMISSION	
DIMENSION UNITS	SCALE	CURRENT REV/DESC: MIGRATED TO NX	
$\nabla = 0$	MM/INCH	10:1	molex SALES ASSY - SHUNT 2-CIRCUIT TERMINAL W/PIN STOP PRODUCT CUSTOMER DRAWING
$\nabla = 0$	GENERAL TOLERANCES (UNLESS SPECIFIED)		
$\nabla = 0$	MM	INCH	
$\nabla = 0$	4 PLACES	\pm	EC NO: 614890
$\nabla = 0$	3 PLACES	\pm	DRWN: NMANE02 2019/04/02
$\nabla = 0$	2 PLACES	± 0.13	CHK'D: ISHWARG 2019/04/02
$\nabla = 0$	1 PLACE	± 0.25	APPR: ISHWARG 2019/04/02
$\nabla = 0$	0 PLACES	\pm	INITIAL REVISION:
$\nabla = 0$	ANGULAR TOL	$\pm 0.5^\circ$	DRWN: BSMART 2004/05/05
$\nabla = 0$	DRAFT WHERE APPLICABLE MUST REMAIN WITHIN DIMENSIONS		APPR: SMILLER 2004/05/18
$\nabla = 0$	THIRD ANGLE PROJECTION	DRAWING	SERIES
$\nabla = 0$		C-SIZE	7859
DOCUMENT NUMBER		DOC TYPE	DOC PART
SDA-7859-2AXXXN		PSD	001
MATERIAL NUMBER		CUSTOMER	SHEET NUMBER
SEE CHART		GENERAL MARKET	1 OF 2

TERMINAL WITH OUT PIN STOP

EDP NO.	ENG. NO.	FINISH
15-38-1024	A-7859-2164	TIN OVERALL
15-29-1024	A-7859-2554	15 GOLD
15-29-1026	A-7859-2561	30 GOLD
7859-1024		TIN OVERALL



FINISH SPECIFICATION

TIN OVERALL - 3.89µm/[0.000150] MINIMUM TIN PLATE OVER
 1.27µm/[0.000050] MINIMUM NICKEL UNDERPLATE.
 15 GOLD - 0.389µm/[0.000015] MINIMUM GOLD PLATE IN SELECT AREA OVER
 1.27µm/[0.000050] MINIMUM NICKEL UNDERPLATE OVERALL.
 30 GOLD - 0.762µm/[0.000030] MINIMUM GOLD PLATE IN SELECT AREA OVER
 1.27µm/[0.000050] MINIMUM NICKEL UNDERPLATE OVERALL.

NOTES:

- MATERIAL:
 HOUSING: GLASS FILLED POLYESTER; 94V-0; COLOR: BLACK
 TERMINAL: PHOSPHOR BRONZE ALLOY.
- THIS PRODUCT CONFORMS TO MOLEX PRODUCT SPEC. PS-7859.
- TO BE USED WITH 0.64/[0.025] SQUARE PINS.
- MINIMUM MATING PIN LENGTH: 5.08/[0.200]
 MAXIMUM MATING PIN LENGTH: 6.86/[0.270]
- PRODUCT IS PACKAGED IN BOXES PER PK-70873-0815.

NOTE FOR LEAD FREE CONVERSION:
 THE PRIMARY SHIPPING CARTON WILL BE LABELED "COMPLIANT TO RoHS DIRECTIVE 2002/95/EC AND ELV ANNEX II OF DIRECTIVE 2000/53/EC". CARTONS WITHOUT THIS LABEL MAY CONTAIN PRODUCT WITH LEAD.

SYMBOLS		THIS DRAWING CONTAINS INFORMATION THAT IS PROPRIETARY TO MOLEX ELECTRONIC TECHNOLOGIES, LLC AND SHOULD NOT BE USED WITHOUT WRITTEN PERMISSION	
DIMENSION UNITS	SCALE	CURRENT REV DESC: MIGRATED TO NX	
∅ = 0	mm	10:1	molex SALES ASSY - SHUNT 2-CIRCUIT TERMINAL W/PIN STOP PRODUCT CUSTOMER DRAWING
∇ = 0	GENERAL TOLERANCES (UNLESS SPECIFIED)		
∇ = 0	MM	INCH	
S = 0	4 PLACES	±	EC NO: 614890
∇ = 0	3 PLACES	±	DRWN: NMANE02 2019/04/02
∇ = 0	2 PLACES	± 0.13 ± 0.01	CHK'D: ISHWARG 2019/04/02
∇ = 0	1 PLACE	± 0.25 ±	APPR: ISHWARG 2019/04/02
⊠ = 0	0 PLACES	±	INITIAL REVISION:
∇ = 0	ANGULAR TOL	± 0.5 °	DRWN: BSMART 2004/05/05
∇ = 0	DRAFT WHERE APPLICABLE MUST REMAIN WITHIN DIMENSIONS	THIRD ANGLE PROJECTION	APPR: SMILLER 2004/05/18

DOCUMENT NUMBER	DOC TYPE	DOC PART	REVISION
SDA-7859-2AXXXN	PSD	001	D2

MATERIAL NUMBER	CUSTOMER	SHEET NUMBER
SEE CHART	GENERAL MARKET	2 OF 2