



ROCKER SWITCH

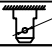

SS31 SERIES

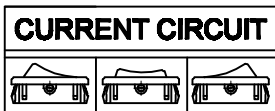


**SPECIFICATION**

Rating:16A 125VAC 3/4HP(C-UL)  
 16A 250VAC 3/4HP(C-UL)  
 16(4)A 250V~T125/55(NEMKO,ENEC17,CB,CQC)  
 10(2) 250V~T125/55(5E4)(NEMKO,ENEC17,CB,CQC)  
 INITIAL CONTACT RESISTANCE:20mΩ Max  
 OPERATION FORCE:300±200gf  
 INSULATION RESISTANCE:100mΩ MIN 500VDC  
 WITHSTAND VOLTAGE:1500VAC FOR 1MINUTE  
 ENDURANCE:10,000CYCLES

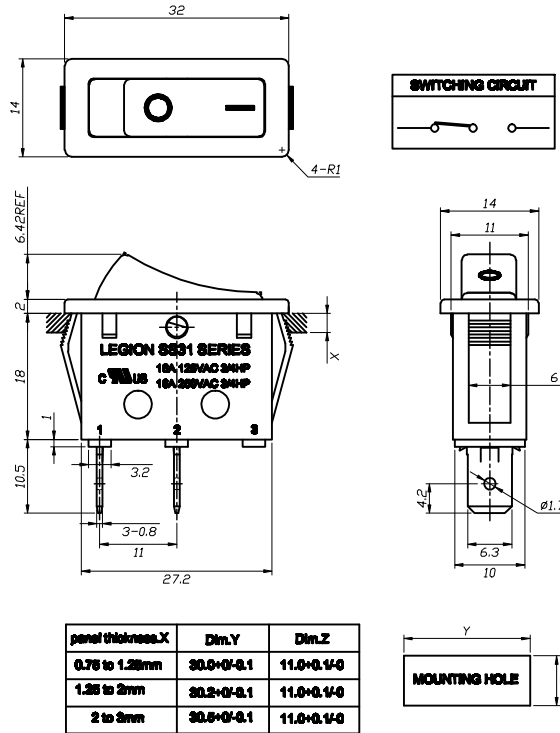


TERMINAL TYPE	
Q	QUICK-CONN 
A	QUICK-CONN 

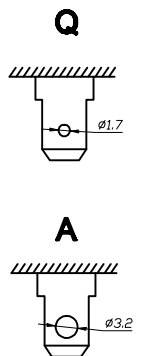


20	ON	-	OFF		40	ON	-	OFF	
21	(ON)	-	OFF	SPST	41	(ON)	-	OFF	DPST
22	ON	-	(OFF)		42	ON	-	(OFF)	
30	ON	-	ON		60	ON	-	ON	
31	(ON)	-	ON		61	(ON)	-	ON	
32	ON	OFF	ON	SPDT	62	ON	OFF	ON	DPDT
33	(ON)	OFF	ON		63	(ON)	OFF	ON	
34	(ON)	OFF	(ON)		64	(ON)	OFF	(ON)	

(-) MOMENTARY



**Terminal list**



**SS31 SERIES ORDERING SYSTEM**

SS31 - B B I W Q - R S 2 0 - L 0 1 - R

MODEL NO.

ACTUATOR COLOR		HOUSING COLOR	
B	BLACK	W	WHITE
R	RED		

PRINTING COLOR
W WHITE
B BLACK
N NONE


ACTUATOR TYPE
R ROCKER
F FLAT
L WITH LENS


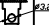
HOUSING TYPE
S SINGLE POLE
D DOUBLE POLE
T TWINS POLE

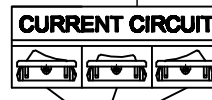
LAMP TYPE
L WITH LAMP
NONE

LIGHT COLOR
0 AMBER(S)
2 RED
3 GREEN
4 BLUE
NONE

RoHS DIRECTIVE
R MEET RoHS DIRECTIVE
NONE

ACTUATOR/HOUSING PRINTING			
I	○	W	≡
N		R	

TERMINAL TYPE	
Q	QUICK-CONN 
A	QUICK-CONN 



20	ON	-	OFF		40	ON	-	OFF	
21	(ON)	-	OFF	SPST	41	(ON)	-	OFF	DPST
22	ON	-	(OFF)		42	ON	-	(OFF)	
30	ON	-	ON		60	ON	-	ON	
31	(ON)	-	ON		61	(ON)	-	ON	
32	ON	OFF	ON	SPDT	62	ON	OFF	ON	DPDT
33	(ON)	OFF	ON		63	(ON)	OFF	ON	
34	(ON)	OFF	(ON)		64	(ON)	OFF	(ON)	

RESISTOR
NONE
1 100KΩ
2 200KΩ

(-) MOMENTARY