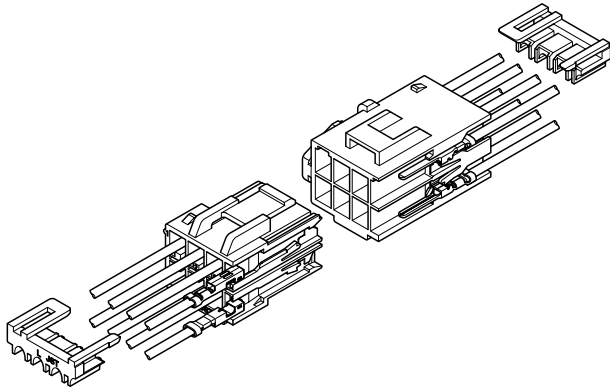


# HL CONNECTOR

3.96mm pitch/Disconnectable Crimp style Wire-to-wire connectors



- Low insertion force contact
- Housing lance
- Inner-housing lock
- Secondary retainers
- Panel lock construction

## Standards

- Recognized E60389
- Certified LR20812
- R50171609

## Specifications

- Current rating: 7A AC, DC max.
- Voltage rating: 300V AC, DC max.
- Temperature range: -25°C to +90°C (including temperature rise in applying electrical current)
- Contact resistance: Initial value/7m Ω max. After environmental testing/10m Ω max.
- Insulation resistance: 1,000M Ω min.
- Withstanding voltage: 1,500V AC/minute
- Applicable wire: AWG #22 to #18 0.3 to 0.75mm<sup>2</sup>
- Applicable panel thickness: 0.7 to 2.0mm
- \* Compliant with RoHS.
- \* Refer to "General Instruction and Notice when using Terminals and Connectors" at the end of this catalog.
- \* Contact JST for details.

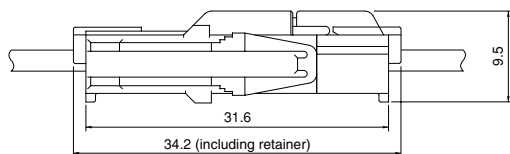
Note: The current rating varies depending on the number of circuits and the wire size used in each connector. The table below lists the current rating as a function of the number of circuits and wire size.

Current unit: A

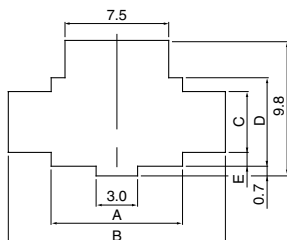
Circuits	Wire size (AWG)		
	#18	#20	#22
2	7	5	4
3	6	4	4
4	6	4	4
8	4	3	3
9	4	3	3
12	3	2	2

## Panel layout and Assembly layout

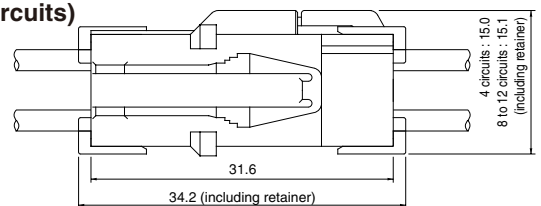
(2 and 3 circuits)



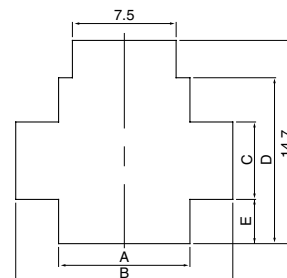
Shape I



(4, 8 and 12 circuits)



Shape II



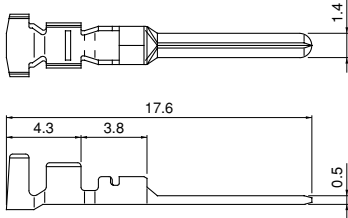
Circuits	Receptacle housing	Panel hole shape	Panel hole dimensions (mm)			General tolerance		Applicable panel thickness (mm)
			A ±0.13	B ±0.13	C ±0.1	D ±0.13	E ±0.1	
2	HLR-02V	I	9.5	15.7	4.4	6.4	1.0	0.7~2.0
3	HLR-03V	I	13.5	19.7	4.4	6.4	1.0	
4	HLR-04V	II	9.5	15.7	5.6	12.0	3.2	
8	HLR-08V	II	17.4	23.6	5.6	12.0	3.2	
12	HLR-12V	II	25.3	31.6	5.6	12.0	3.2	

- Note: 1. Punch holes in the panel according to the figures and table shown above. Burrs must be removed.  
 2. The strength of the panel must be considered when punching two or more holes.  
 3. The connector must be inserted from the same side as the hole is punched.

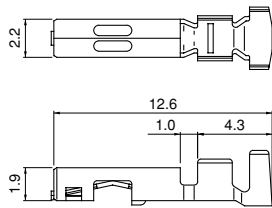
# HL CONNECTOR

## Contact

### Pin contact



### Socket contact



Model No.		Applicable wire		Insulation O.D. (mm)	Q'ty / reel
Pin contact	Socket contact	mm <sup>2</sup>	AWG #		
<b>SSM-21T-P1.4</b>	<b>SSF-21T-P1.4</b>	0.3~0.75	22~18	1.5~2.2	6,000

### Material and Finish

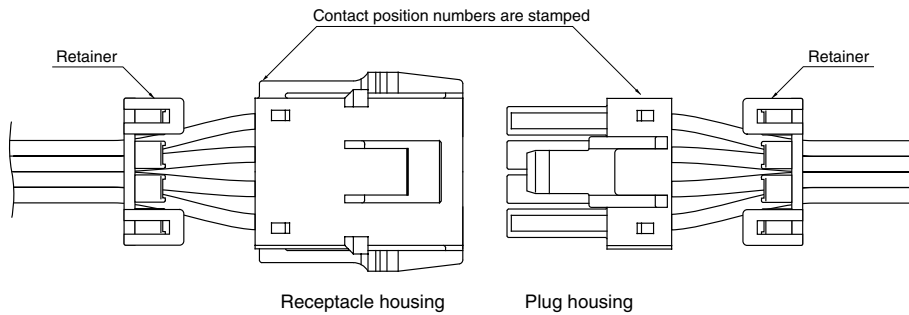
Phosphor bronze, tin-plated (reflow treatment)

### RoHS compliance

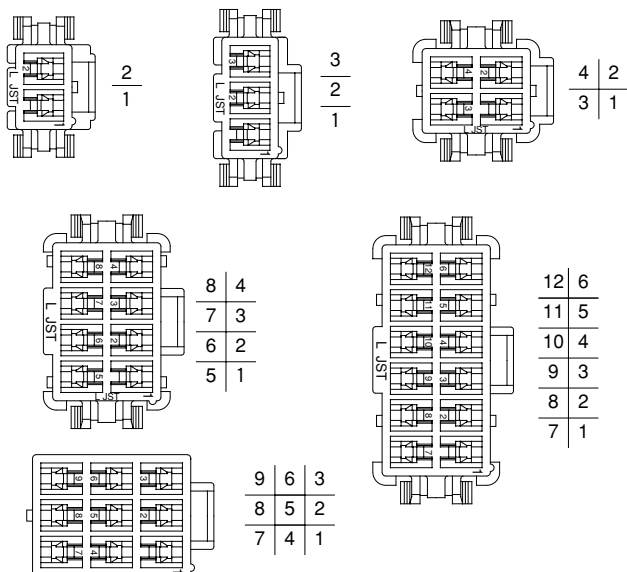
Note: Contact JST for special products.

Contact	Crimping machine	Applicator		
		Crimp applicator	Dies	Crimp applicator with dies
<b>SSM-21T-P1.4</b>	AP-K2N	MKS-L	MK/SSF/M-21-14	APLMK SSF/M21-14
<b>SSF-21T-P1.4</b>		—	—	—

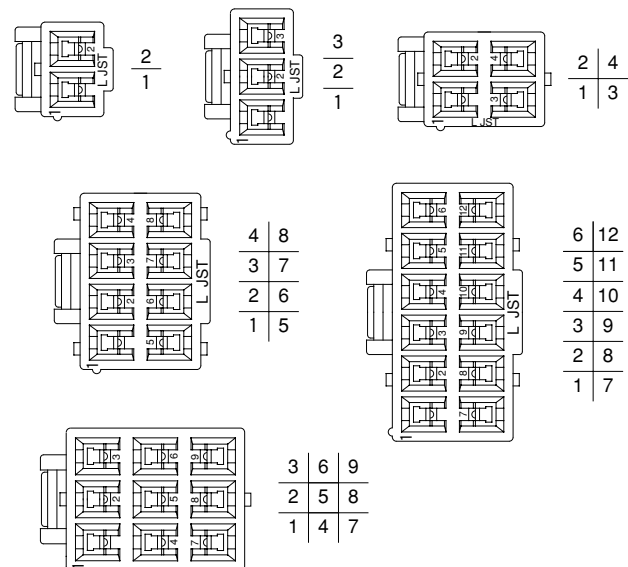
## Contact position location numbers



### Receptacle housing



### Plug housing



# HL CONNECTOR

## Housing

Material: Housing...PA 66, UL94V-0, white  
Retainer...Glass-filled PA 66, UL94V-0, ivory

Circuits	Voltage rating	Current rating	Receptacle housing(for pin contact)	Plug housing(for socket contact)	Retainer
2	300V	7A	<b>HLR-02V</b> 	<b>HLP-02V</b> 	<b>HLS-02V</b> (commonly used for 2-circuit housing and 4-circuit housing) 
			<b>HLR-02VF</b> 		
3	300V	6A	<b>HLR-03V</b> 	<b>HLP-03V</b> 	<b>HLS-03V</b> 
			<b>HLR-03VF</b> 		
4	300V	6A	<b>HLR-04V</b> 	<b>HLP-04V</b> 	<b>HLS-02V</b> (commonly used for 2-circuit housing and 4-circuit housing) 
			<b>HLR-04VF</b> 		
8	300V	4A	<b>HLR-08V</b> 	<b>HLP-08V</b> 	<b>HLS-08V</b> 
			<b>HLR-08VF</b> 		
9	300V	4A	<b>HLR-09V</b> 	<b>HLP-09V</b> 	—
			<b>HLR-09VF</b> 		
12	300V	3A	<b>HLR-12V</b> 	<b>HLP-12V</b> 	<b>HLS-12V</b> 
			<b>HLR-12VF</b> 		

RoHS compliance