

SPECIFICATIONS

Rated(额定参数): 300V,25A
 Dielectric strength(抗电强度): AC2000V/1 Minute
 Insulation Resistance(绝缘电阻):1000MΩ Min
 Contact Resistance(接触电阻):20mΩ Max
 Screw Torque(扭矩): 1.2Nm (10.53lb.in)
 Wire Range(线径):12~22AWG
 Temp. range(操作温度): -40°C~+105°C
 MAX Soldering(瞬时温度):+250°C,5s

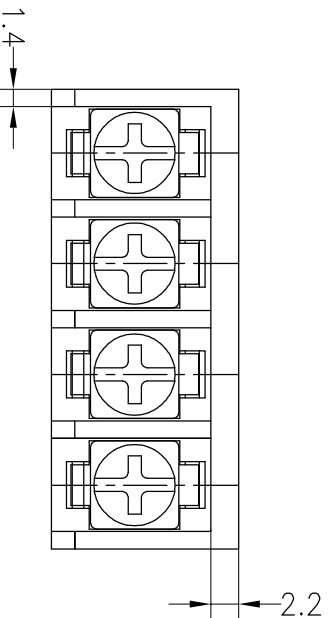
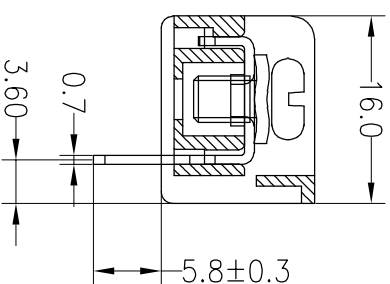
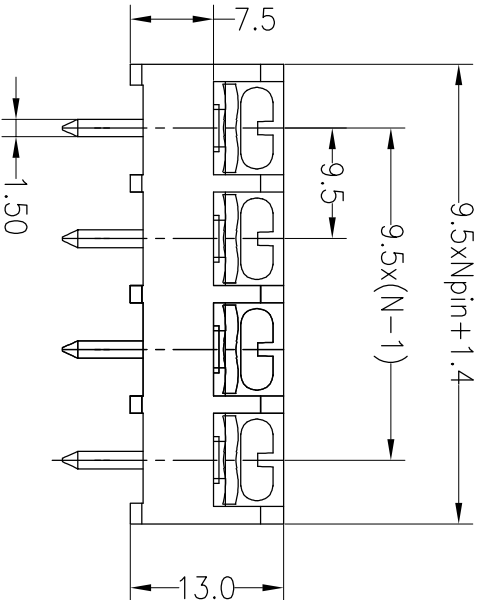
Housing Material(塑件): PA66 (UL94 V-0)
 Contact(端子): Brass, Tin plating(黄铜镀锡)
 Screw (螺丝): M4.0, Steel, Ni plating(钢,镀锌)

	PITCH RANGE		NOMINAL DIMENSION RANGE	
	IN	MM	IN	MM
TO	OVER 6	OVER 10	TO 30	OVER 60
6	TO 10	TO 24	TO 30	TO 60
			TO 60	TO 100
			TO 100	TO 150
			TO 150	TO 150
±0.10	±0.15	±0.25	±0.30	±0.30
			±0.50	±0.70
				±1.00

Ordering Information

JL950 - 950 XX X X 1

Pitch 950=9.5PH
 No. of pins 2P~24P
 Housing Color
 B=Black
 G=Green
 U=Blue
 R=Red
 W=White
 Y=Yellow
 O=Orange
 F=Grey
 Packing
 O=Pe bog
 T=Tube
 A=Tray



REV		DATE	MODIFICATION DESCRIPTION	CHANGE	DIM	TOL	APPROVE	SCALE	FIT	TITLE:	
A0		2018.04.10	NEW DRAWING		Angle	±3°		UNIT	A4	PART NO. JL950-950XXXX1	
								mm	1/1	9.50mm Barrier Terminal Blocks	
										PRUL.	
										DRAW Yiyusheng 2018.04.10	
										OPERATION	
										XX ±0.30	
										X:XX ±0.20	
										X:XXX ±0.10	

JILIN 深圳市锦凌电子有限公司
 SHENZHEN JINLING ELECTRONIC CO.,LTD
 Tel: 86-755-2997-5806/5802 Fax: 86-755-2997-5992