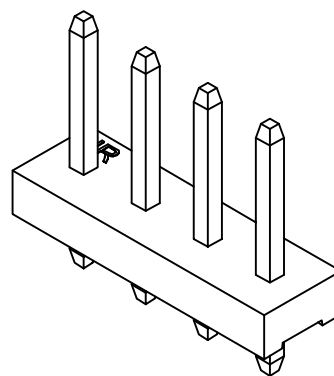
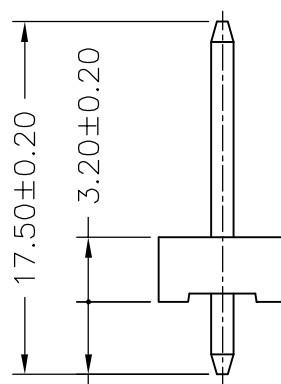
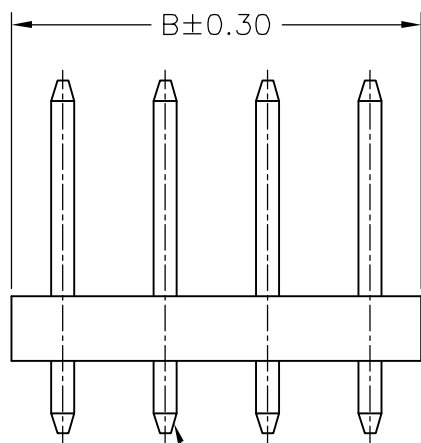


P.C.B LAYOUT



SPECIFICATIONS
 Current Rating: 7A AC,DC
 Voltage Rating: 250V AC,DC
 Temperature Range: -25°C ~ +85°C
 Contact Resistance: 10mΩ Max
 Insulation Resistance: 1000MΩ Min
 Withstanding Voltage: 1500V AC/minute
 Pin Material: Brass/Tin-plated
 Material: Nylon 66,UL94V-2
 Color: Natural(Translucent)



PIN 1.14 SQ

3.60 ± 0.20

Ordering Information & Dimensions

PART NO.	Dimensions	
	A	B
A5081WVA-02P	5.08	10.16
A5081WVA-03P	10.16	15.24
A5081WVA-04P	15.24	20.32
A5081WVA-05P	20.32	25.40
A5081WVA-06P	25.40	30.48
A5081WVA-07P	30.48	35.56
A5081WVA-08P	35.56	40.64
A5081WVA-09P	40.64	45.72



JOINT TECH ELECTRONIC IND. CO., LTD.
 JOY DAY INDUSTRIAL CO., LTD.

UNIT	SCALE	SHEET	TITLE:
mm		1 of 1	5.08mm PITCH 180° WAFER
DRAWN BY 伍建永 2005.04.23		APPROVED BY 谢瑞清 2005.04.23	
GENERAL TOLERANCE			
B1	REVISE	2007.11.13	X.X ± 0.25
B0	NEW RELEASE	2006.01.08	X.XX ± 0.15
REV.	DESCRIPTION	DATE	X.XXX ± 0.05

DRAW NO.: A5081WVA-XP REV. B1