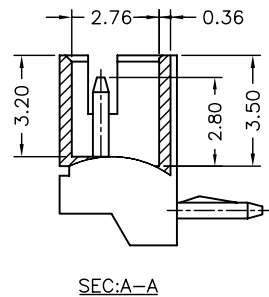


MATED CONDITION



P/N LEGEND

A1500 WR-XP XXX
① ② ③ ④

- ① Series No.
- ② Connector type: WR=Right angle
- ③ No. of circuits
- ④ Option code:
Blank=Nylon 66-V0, Gray(7528C), Tin-plated
WH =Nylon 66-V0, White, Tin-plated

SPECIFICATIONS

Current Rating: 1A AC,DC
Voltage Rating: 100V AC,DC
Temperature Range: -25°C ~ +85°C
Contact Resistance: 20mΩ Max.
Insulation Resistance: 500MΩ Min.
Withstanding Voltage: 500V AC/minute
Pin Material: Brass

Circuit No.	Dimensions		
	A	B	C
02P	1.50	4.50	3.75
03P	3.00	6.00	5.25
04P	4.50	7.50	6.75
05P	6.00	9.00	8.25
06P	7.50	10.50	9.75
07P	9.00	12.00	11.25
08P	10.50	13.50	12.75
09P	12.00	15.00	14.25
10P	13.50	16.50	15.75
11P	15.00	18.00	17.25
12P	16.50	19.50	18.75
13P	18.00	21.00	20.25



燦達電子工業股份有限公司
JOINT TECH ELECTRONIC IND. CO., LTD.

UNIT: mm SCALE: 1:1 SHEET: 1 of 1

DRAWN BY: 董正一
2001.02.01

APPROVED BY: 董正一
2001.02.01

GENERAL TOLERANCE

X. X ± 0.25
X. XX ± 0.15
X. XXX ± 0.05

TITLE:

1.50mm PITCH
90° WAFER

DRAW NO.: A1500WR-XP

REV. B4

REV.	DESCRIPTION	DATE	NAME
B4	EN1704060001	2017.04.06	周傑亮
B3	EN1107140278	2011.07.13	陳錦展