

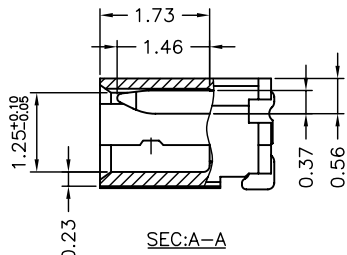
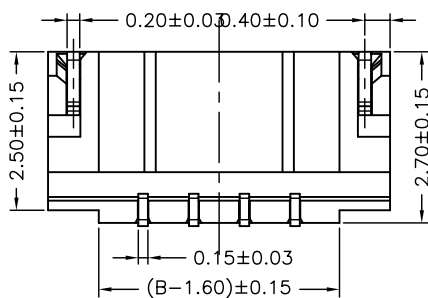
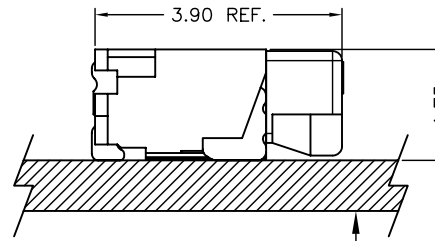
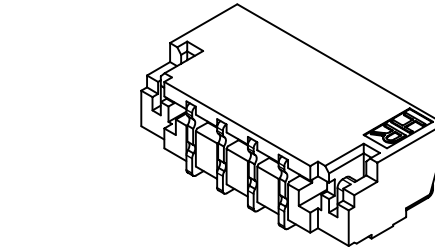
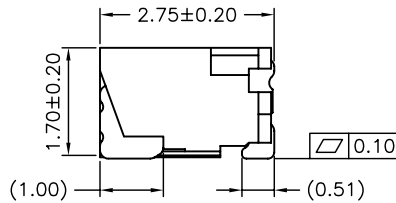
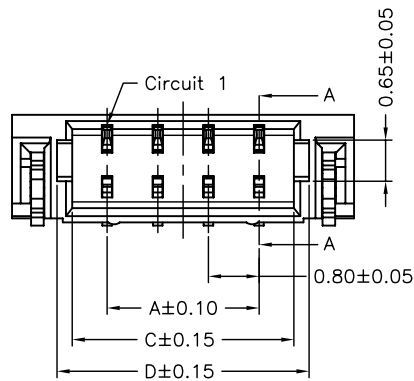
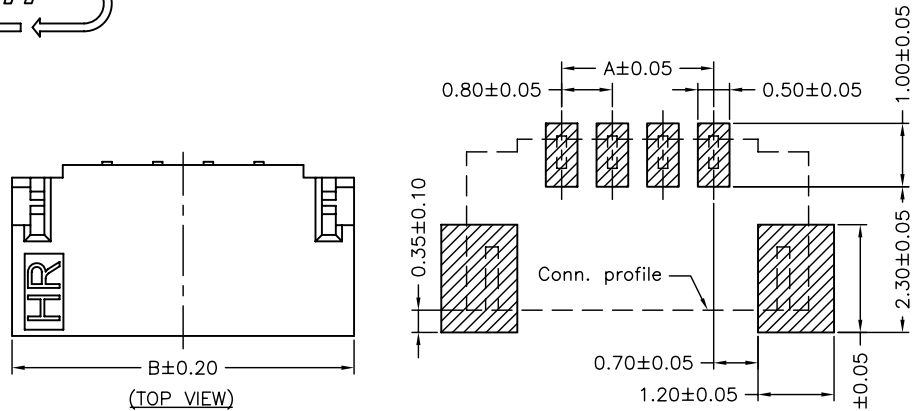


P/N LEGEND

- A0800 WR-S-XP N L X XX X S1 R
- ① Series No.  
 ② Connector type: WR=Right angle  
 ③ Mounting type: S=SMT without boss  
 ④ No. of circuits  
 ⑤ N=Halogen Free  
 ⑥ Material: L=LCP  
 ⑦ Color: B=Black N=Natural  
 ⑧ Plating code for contacts:  
 T1=Matte Tin-plated; G1=Gold-flash  
 TA=Matte Tin-plated 60~80u"  
 ⑨ Plating code for solder tabs:  
 T=Matte Tin-plated; G=Gold-flash  
 ⑩ Option code: S1=For LITE-ON  
 ⑪ Packing code: R=Tape & Reel

SPECIFICATIONS

Current Rating: 0.5A AC,DC  
 Voltage Rating: 30V AC,DC  
 Temperature Range: -25°C ~ +85°C  
 Contact Resistance: 20mΩ Max.  
 Insulation Resistance: 100MΩ Min.  
 Withstanding Voltage: 200V AC/minute  
 Pin Material: Phosphor Bronze  
 Solder Tabs: Phosphor Bronze



Circuit No.	Dimensions			
	A	B	C	D
02P	0.80	3.80	1.90	2.38
03P	1.60	4.60	2.70	3.18
04P	2.40	5.40	3.50	3.98
05P	3.20	6.20	4.30	4.78
06P	4.00	7.00	5.10	5.58
07P	4.80	7.80	5.90	6.38
08P	5.60	8.60	6.70	7.18
10P	7.20	10.20	8.30	8.78
12P	8.80	11.80	9.90	10.38
14P	10.40	13.40	11.50	11.98
15P	11.20	14.20	12.30	12.78
16P	12.00	15.00	13.10	13.58
17P	12.80	15.80	13.90	14.38
20P	15.20	18.20	16.30	16.78
22P	16.80	19.80	17.90	18.38
24P	18.40	21.40	19.50	19.98

				燦達電子工業股份有限公司 JOINT TECH ELECTRONIC IND. CO., LTD.	
UNIT		SCALE	SHEET		TITLE:
mm		1 : 1	1 of 2		
DRAWN BY		APPROVED BY		0.80mm PITCH 90° WAFER-SMT TYPE	
陳敏		董正一			
2011.03.02		2011.03.02			
GENERAL TOLERANCE					
A3	EN1409110002	2014.09.11	周傑亮	ANGLE±	DRAW NO. : A0800WR-S-XPXXXXXS1X
A2	EN1311270415	2013.11.26	劉包根		
A1	EN1301230026	2013.01.23	陳錦展		REV. A3
A0	NEW RELEASE	2011.03.02	陳敏		
REV.	DESCRIPTION	DATE	NAME	X.X±0.25	
				X.XX±0.15	
				X.XXX±0.05	