

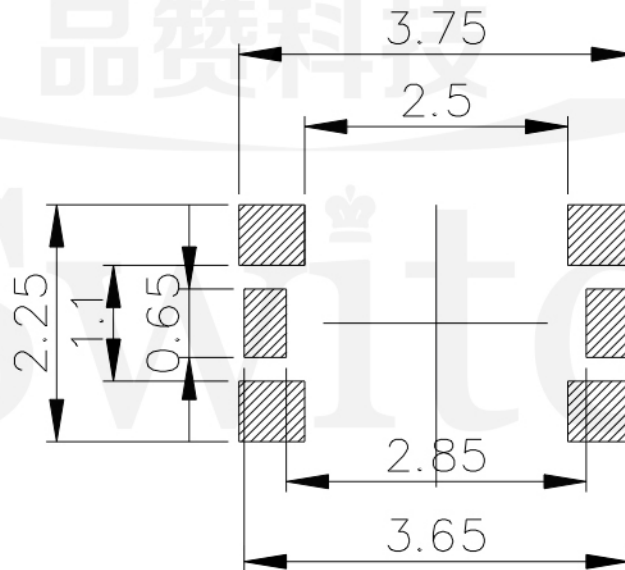
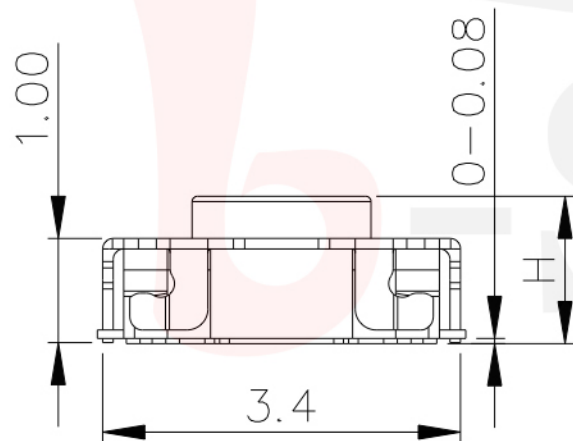
GT-TC171X-H014-LX

G-SWITCH Operating Force
 A=160gf
 B=250gf
 E=400gf

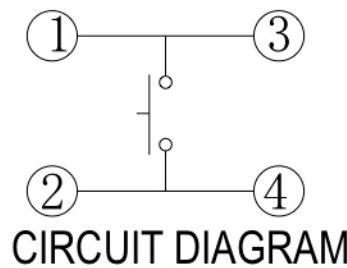
Switch Height (mm)
 H014=1.4mm

Switch lifetime (Force)
 L05=50,000 Cycles (E)
 L1=100,000 Cycles
 L2=200,000 Cycles

G-Switch Specification:
 Operating temperature range: -30°C to +85°C
 Rating: 50mA, 12V DC
 Insulation resistance: 100MΩ min. 100V DC
 Dielectric strength: 250V AC for 1 min
 Contact resistance: 100mΩ max.
 Travel: 0.12 ± 0.05mm



P.C.B LAND DIMENSION

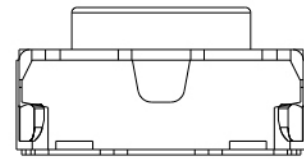
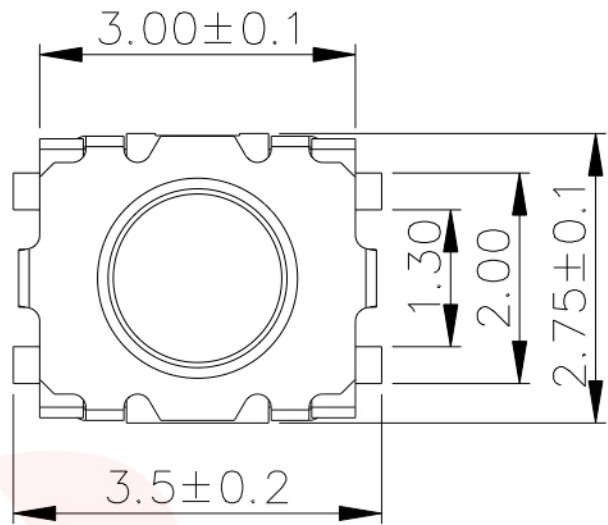


G-Switch Electronic (HongKong) CO.,Ltd.

Unless otherwise specified, Tolerance:
 X. ±0.30
 X.x ±0.20
 X.xx ±0.15
 X.xxx ±0.10
 Angles ±3°

DESIGN 陈锋枫 DATE 2019.05.29
 CHECKED DATE
 APPROVED DATE
<http://www.dg-switch.com>
 TEL: 0769-82388879

Molde code:
 GT-TC171X-H014-LX
 REV.: X1 SCALE: 4:1 UNIT: mm
 SIZE: A4 SHEET: 1/1

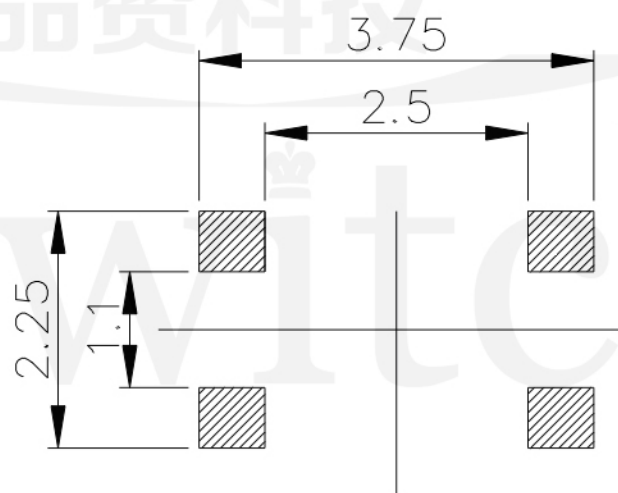
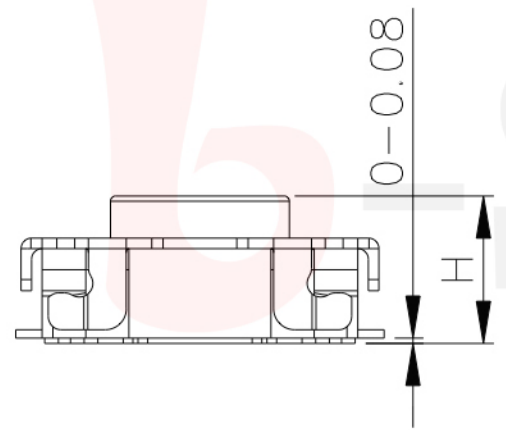


GT-TS171X-H014-LX

G-SWITCH Operating Force
 A=160gf
 B=250gf
 E=400gf

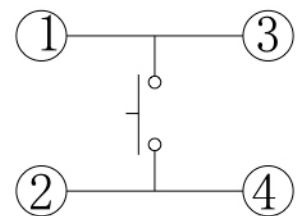
Switch Height (mm)
 H014=1.4mm

Switch lifetime (Force)
 L05=50,000 Cycles (E)
 L1=100,000 Cycles
 L2=200,000 Cycles



P.C.B LAND DIMENSION

G-Switch Specification:
 Operating temperature range: -30°C to +85°C
 Rating: 50mA, 12V DC
 Insulation resistance: 100MΩ min. 100V DC
 Dielectric strength: 250V AC for 1 min
 Contact resistance: 100mΩ max.
 Travel: 0.12±0.05mm



CIRCUIT DIAGRAM



	G-Switch Electronic (HongKong) CO.,Ltd.		
	DESIGN 陈锋枫	DATE 2019.05.29	Molde code: GT-TS171X-H014-LX
	CHECKED	DATE	
	APPROVED	DATE	REV.: X1
Unless otherwise specified, Tolerance: X. ±0.30 X.x ±0.20 X.xx ±0.15 X.xxx ±0.10 Angles ±3°	http://www.dg-switch.com TEL: 0769-82388879		SCALE: 4:1 SHEET: 1/1