

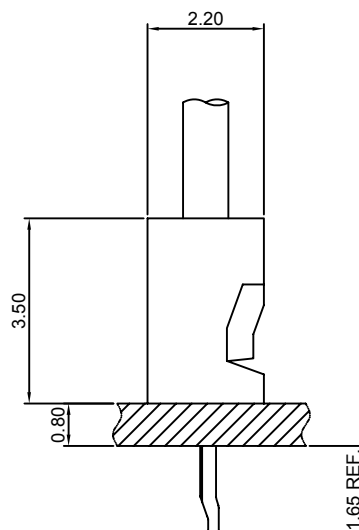
## Specifications

- Current rating:1A AC,DC  
Voltage rating:125V AC,DC  
Temperature range:-40°C~+105°C  
Contact resistance:20mΩMax.  
Insulation resistance:1000MΩMin.  
Withstanding voltage:250V AC/minute  
\*Compliant with RoHS and REACH\*  
\*Meet the HF/Halogen Free,need to customize\*  
\*Contact CJT for details\*

## Standards



## Assembly layout

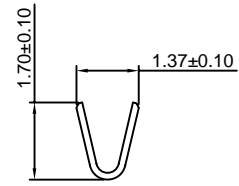
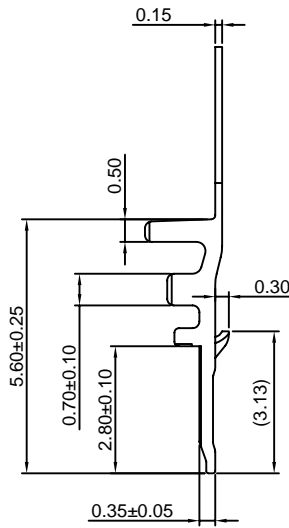
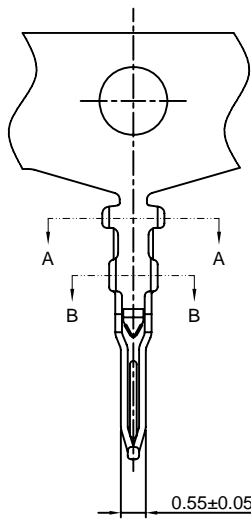


### B1251-T

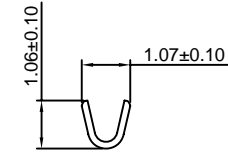
1.25mm pitch Crimp Terminal

**Reference Informations:**

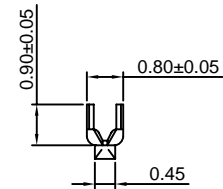
\*Used in CJT B1251H-XP series Housing



SEC:A-A



SEC:B-B



Unit:mm

Ordering information & Specifications:

| Part NO. | Wire Range | Insulation O.D. | Material        | Finish           | Qty/reel   |
|----------|------------|-----------------|-----------------|------------------|------------|
| B1251-TP | AWG#28-#32 | 1.00mm(max)     | Phosphor Bronze | Tin over Nickel  | 15,000 PCS |
| B1251-GP | AWG#28-#32 | 1.00mm(max)     | Phosphor Bronze | Gold over Nickel | 15,000 PCS |

Optional Gold plating available but MOQ requested

### B1251H-XP

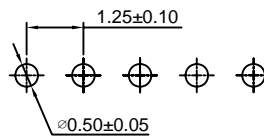
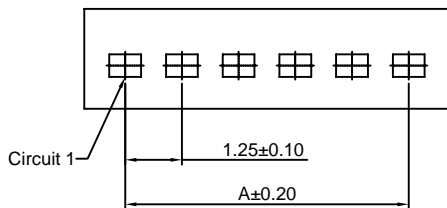
1.25mm pitch Housing

**Reference Informations:**

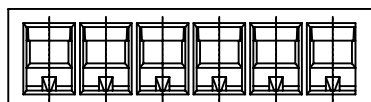
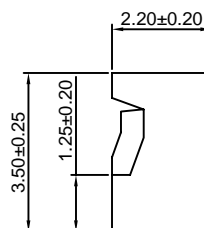
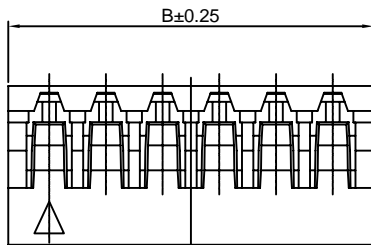
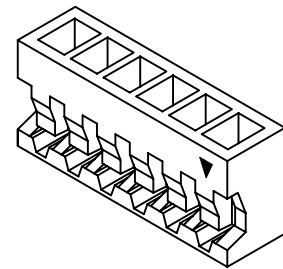
- \*Material:Nylon 66,UL94V-0
- \*Suitable CJT B1251-T series Terminal
- \*Color:White

**Ordering Information:**

- B1251H-XP - \*\*\*  
 1 2  
 1.Part No.  
 2.Material:  
 (blank):Nylon 66,UL94V-0  
 GWT:Nylon 66,UL94V-0,GWT 750°C



P.C.B LAYOUT



Ordering Information & Dimensions:

| PART NO. | Dimensions |       |
|----------|------------|-------|
|          | A          | B     |
| 2P       | 1.25       | 3.05  |
| 3P       | 2.50       | 4.30  |
| 4P       | 3.75       | 5.55  |
| 5P       | 5.00       | 6.80  |
| 6P       | 6.25       | 8.05  |
| 7P       | 7.50       | 9.30  |
| 8P       | 8.75       | 10.55 |
| 9P       | 10.00      | 11.80 |
| 10P      | 11.25      | 13.05 |
| 11P      | 12.50      | 14.30 |
| 12P      | 13.75      | 15.55 |
| 13P      | 15.00      | 16.80 |
| 14P      | 16.25      | 18.05 |
| 15P      | 17.50      | 19.30 |

Unit: mm