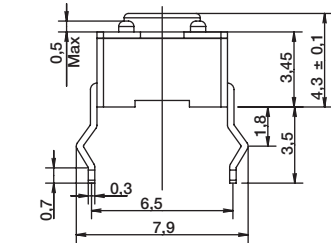


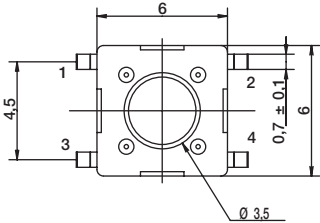
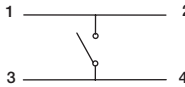
PTS645 Series 6 mm Tact Switches

TERMINATION

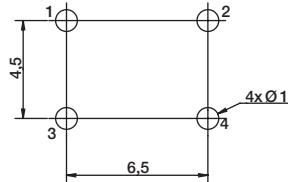
S STRAIGHT



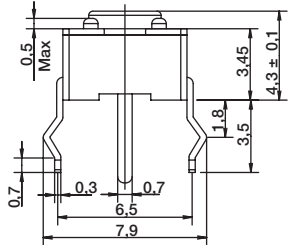
SCHEMATIC



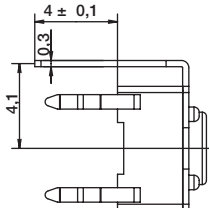
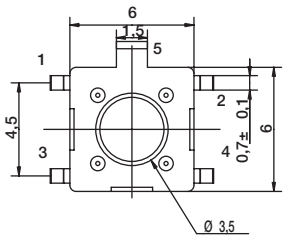
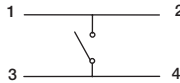
PCB LAYOUT



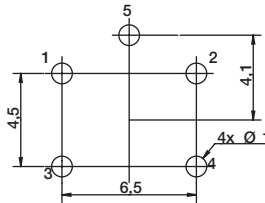
T STRAIGHT WITH ESD PIN



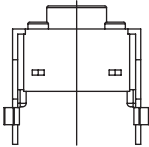
SCHEMATIC



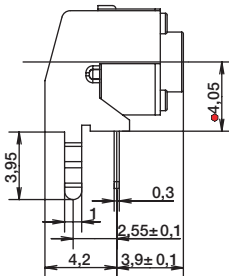
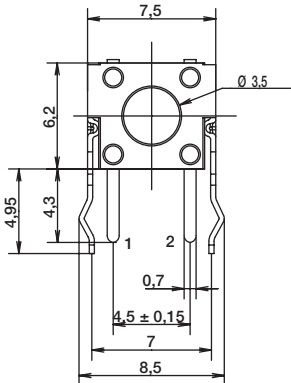
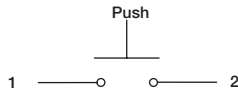
PCB LAYOUT



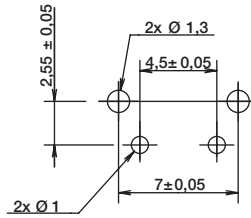
V VERTICAL



SCHEMATIC



PCB LAYOUT

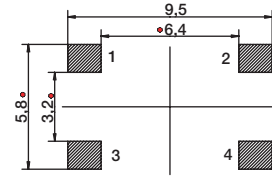
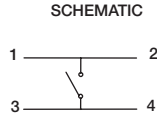
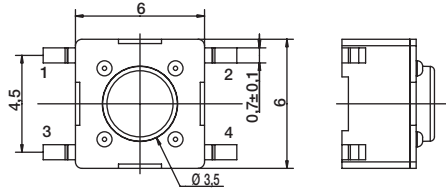
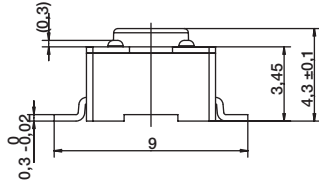


First Angle
Projection

PTS645 Series 6 mm Tact Switches

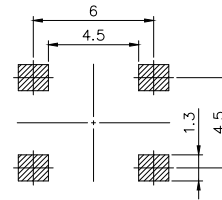
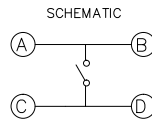
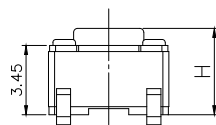
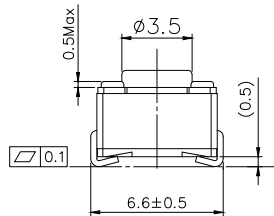
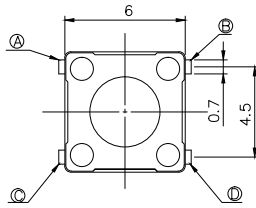
TERMINATION

SMT G Type



PCB LAYOUT

SMT J Type



PCB LAYOUT



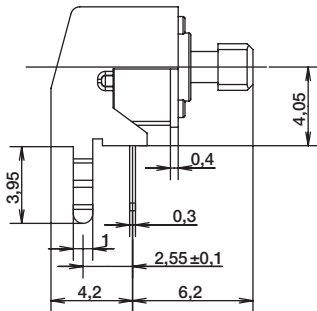
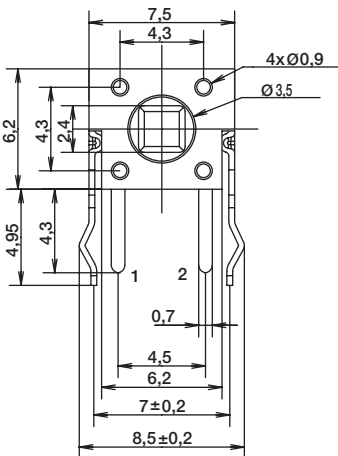
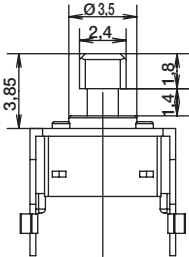
Dimensions are shown: mm
Specifications and dimensions subject to change

PTS645 Series 6 mm Tact Switches

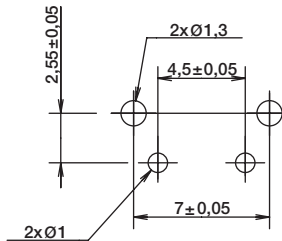
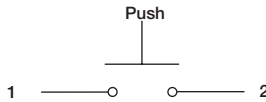
ACTUATOR SHAPE

J SQUARE ACTUATOR

VERTICAL THT - FOR 6.15MM LENGTH ONLY

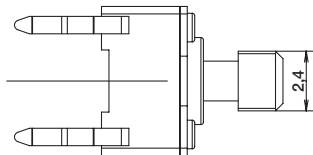
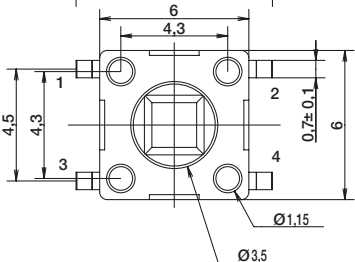
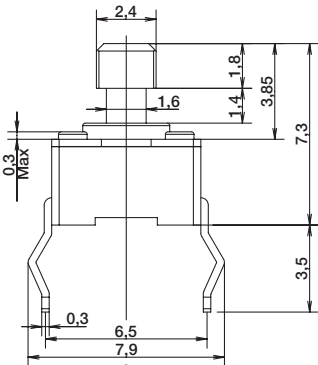


SCHEMATIC

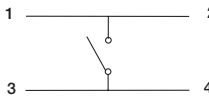


RECOMMENDED PCB LAYOUT

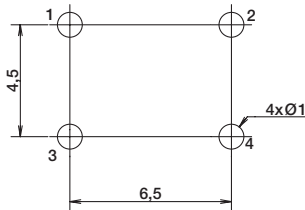
VERTICAL THT - FOR 7.3MM HEIGHT ONLY



SCHEMATIC



RECOMMENDED PCB LAYOUT

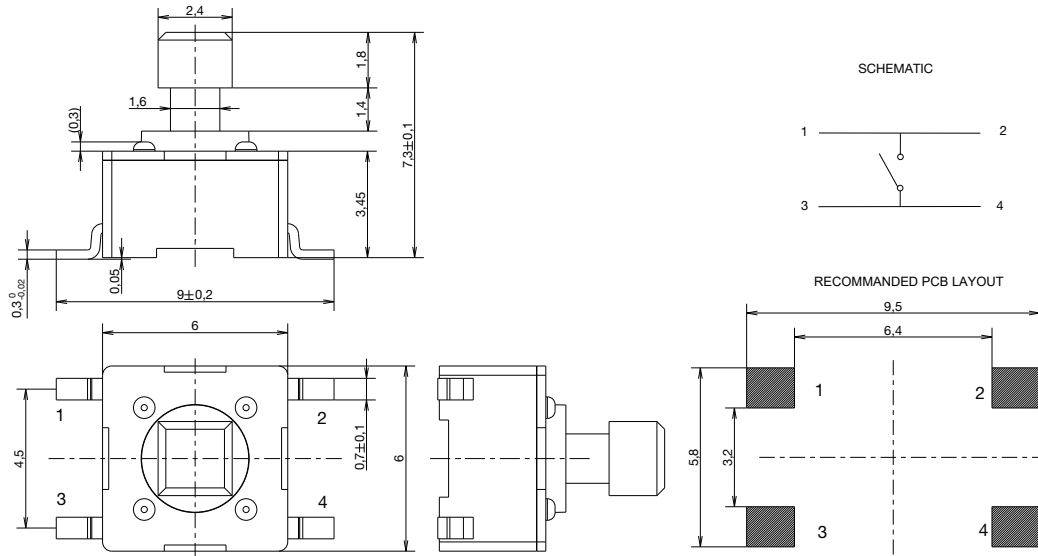


First Angle
Projection

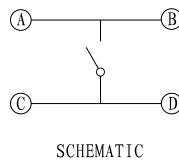
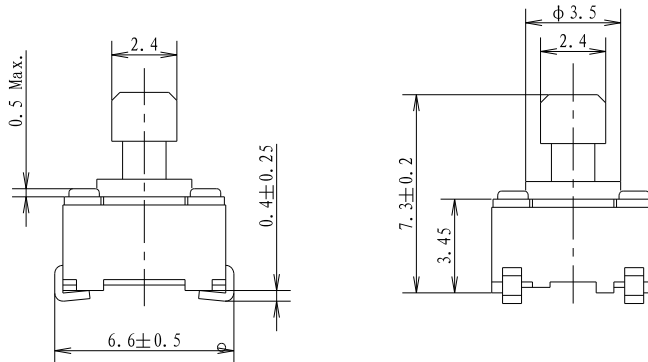
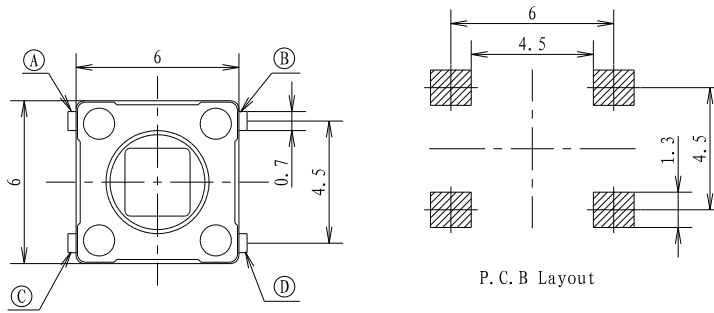
PTS645 Series 6 mm Tact Switches

ACTUATOR SHAPE

STRAIGHT SMT G TYPE - FOR 7.3MM HEIGHT ONLY



STRAIGHT SMT J TYPE - FOR 7.3MM HEIGHT ONLY

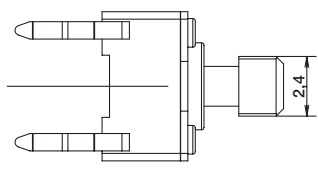
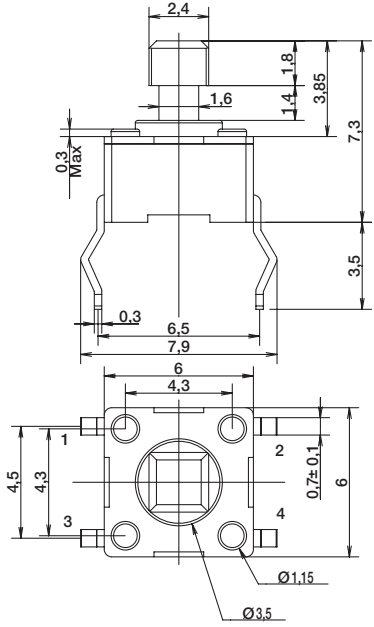


First Angle
Projection

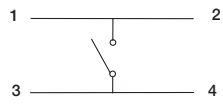
PTS645 Series 6 mm Tact Switches

ACTUATOR SHAPE

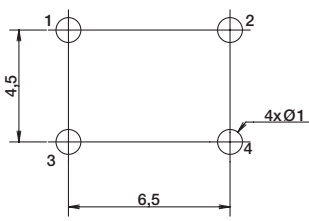
VERTICAL THT - FOR 7.3MM HEIGHT ONLY



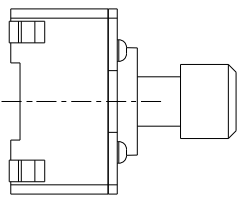
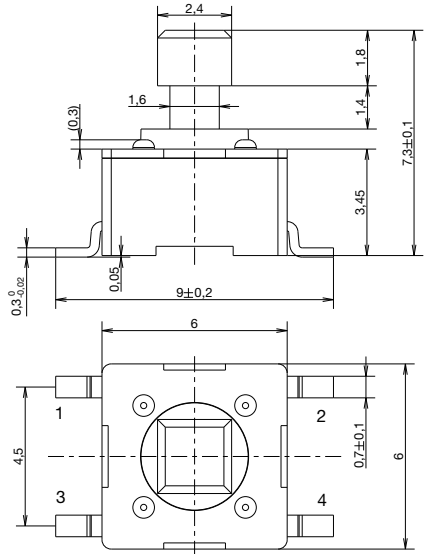
SCHEMATIC



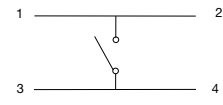
RECOMMENDED PCB LAYOUT



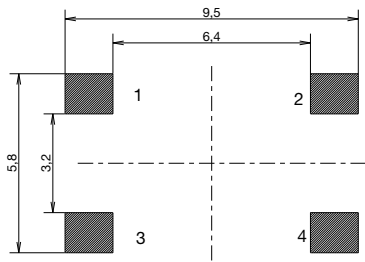
STRAIGHT SMT - FOR 7.3MM HEIGHT ONLY



SCHEMATIC



RECOMMENDED PCB LAYOUT



First Angle
Projection



7 Apr 21

Dimensions are shown: mm
Specifications and dimensions subject to change

Tactile Switches

PTS645 Series 6 mm Tact Switches

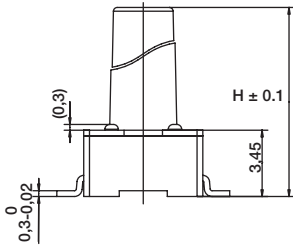
ACTUATION FORCE

| OPTION CODE | FORCE |
|-------------|-----------------|
| L | 130 grams Black |
| M | 160 grams Blue |
| H | 200 grams Gray |
| K | 260 grams Red |

Tactile Switches

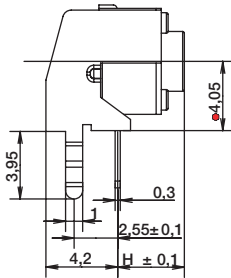
ACTUATOR HEIGHT

Switch height from PCB for S and T only



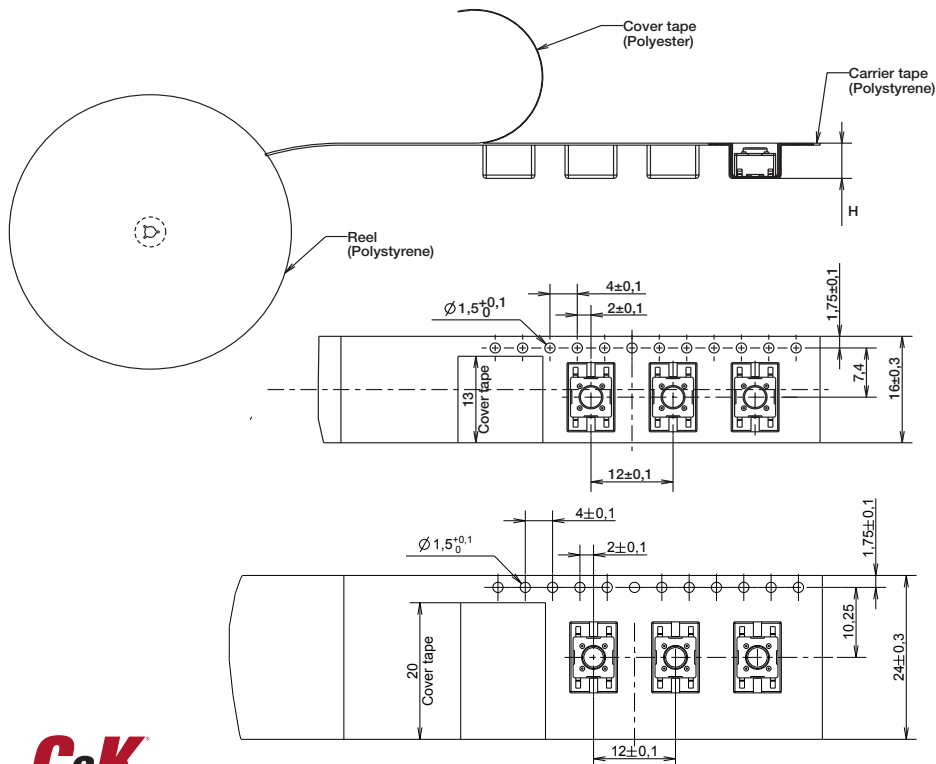
| OPTION CODE | DIMENSION H | TERMINATION | SCHEMATIC | |
|-------------|-------------|-------------------|-----------------|--------------|
| | | | Without EMC pin | With EMC pin |
| 43 | 4,3 (.169) | Thru-hole and SMT | | |
| 50 | 5,0 (.197) | Thru-hole and SMT | | |
| 70 | 7,0 (.275) | Thru-hole and SMT | | |
| 95 | 9,5 (.374) | Thru-hole and SMT | | |
| 13 | 13,0 (.512) | SMT | | |

Switch length from front leads for V only



| OPTION CODE | DIMENSION H | TERMINATION | SCHEMATIC | |
|-------------|-------------|-------------|-----------------|--------------|
| | | | Without EMC pin | With EMC pin |
| 31 | 3,15 (.124) | Vertical | | |
| 39 | 3,85 (.151) | Vertical | | |
| 58 | 5,85 (.230) | Vertical | | |
| 83 | 8,35 (.329) | Vertical | | |

TAPE & REEL FOR SMT G TYPE VERSIONS



| OPTION CODE | WIDTH TAPE | POCKET HEIGHT |
|-------------|------------|---------------|
| 43 | 16 ± 0.3 | 5.3 |
| 50 | 16 ± 0.3 | 5.3 |
| 70 | 16 ± 0.3 | 7.3 |
| 73 | 16 ± 0.3 | 7.6 |
| 95 | 24 ± 0.3 | 10.3 |
| 13 | 24 ± 0.3 | 13.3 |



Dimensions are shown: mm

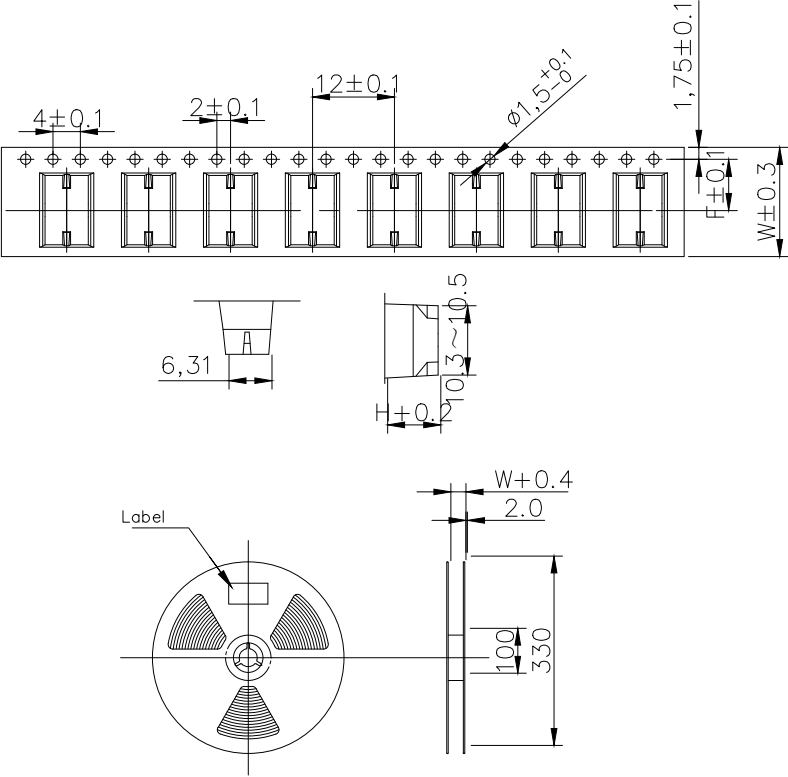
Specifications and dimensions subject to change



7 Apr 21

PTS645 Series 6 mm Tact Switches

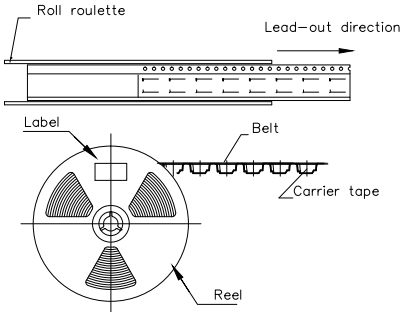
TAPE & REEL FOR SMT J TYPE VERSIONS



Tape specifications

| Product height (H)mm | Carrier tape width (W)mm | Center distance of carrier tape (F)mm | pcs/reel |
|----------------------|--------------------------|---------------------------------------|----------|
| 4.3 | 16 | 7.5 | 1000 |
| 5.0 | 16 | 7.5 | 1000 |
| 7.0 | 16 | 7.5 | 700 |
| 7.3 | 16 | 7.5 | 700 |
| 9.5 | 24 | 11.5 | 500 |
| 11 | 24 | 11.5 | 500 |
| 13 | 24 | 11.5 | 500 |

Note: The disc rotates counterclockwise. According to the packing shown in the figure, the braid must not be twisted to prevent product deformation;



B Tactile Switches