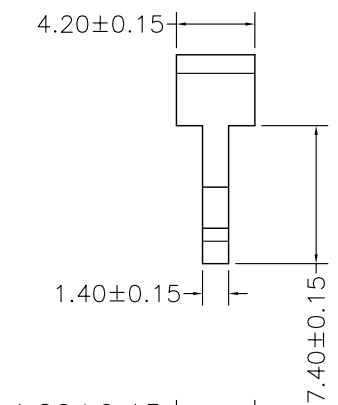
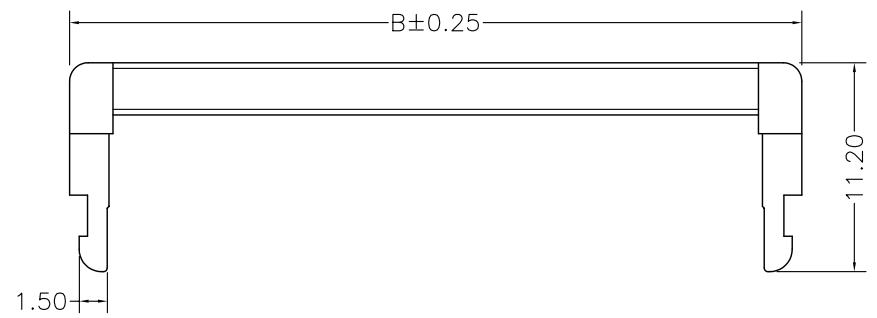
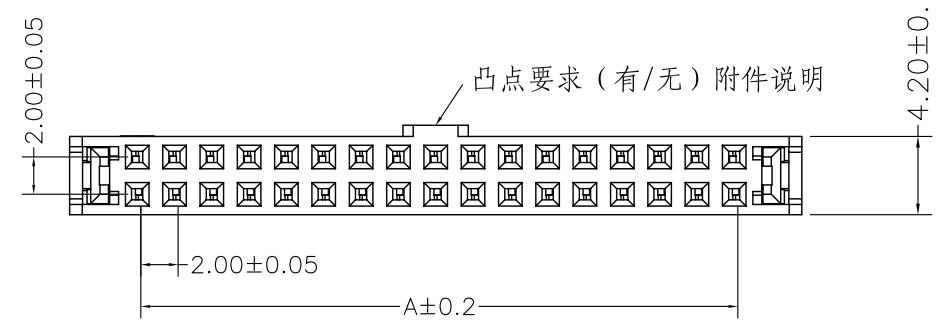
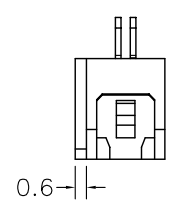
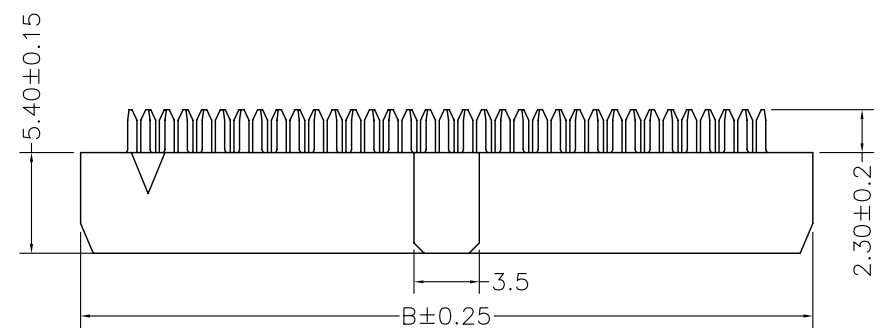
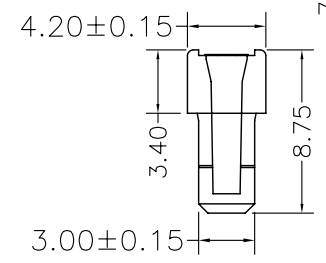
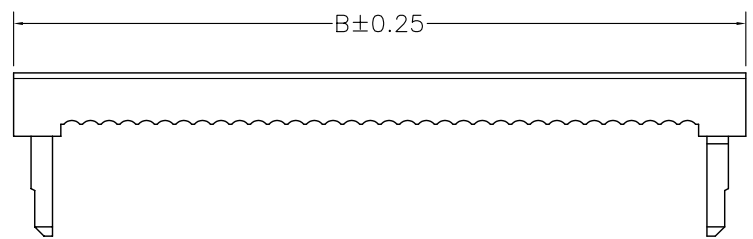


REV.	DESCRIPTION	DATE
A	RELEASE	2010.11.23



MATERIAL&FINISH
 Insulator: PBT Glass Fiber(UL94V-0)
 Contact : Brass/Phosphorus bronze
 Contact : Gold-Plated Over Nickel.
SPECIFICATIONS
 Current Rating :1A AC,DC
 Voltage Rating : 250V AC,DC
 Temperature Range:-40°C To+105°C
 Contact Resistance:20mΩ Min
 Insulation Resistance:1000MΩ Min
 Withstanding Voltage:500V AC/Min



PART NO	Dim. A	Dim. B
MFC-6P	4.0	11.2
MFC-8P	6.0	13.2
MFC-10P	8.0	15.2
MFC-12P	10.0	17.2
MFC-14P	12.0	19.2
MFC-16P	14.0	21.2
MFC-18P	16.0	23.2
MFC-20P	18.0	25.2
MFC-22P	20.0	27.2
MFC-24P	22.0	29.2
MFC-26P	24.0	31.2
MFC-28P	26.0	33.2
MFC-30P	28.0	35.2
MFC-34P	32.0	39.2
MFC-36P	34.0	41.2
MFC-40P	38.0	45.2
MFC-44P	42.0	49.2
MFC-50P	48.0	55.2

UNLESS TOLERANCE		DRAW BY YUAN		ITEM : IDC2.0系列
GENERAL	ANGLE	DESIGN BY		
X. ± 0.30	X.' ± 3.0'	CHECK BY		
.X ± 0.20	.X' ± 2.0'	APPROVE BY		
.XX ± 0.15	.XX' ± 1.0'	SCALE	SHEET	UNIT
.XXX ± 0.10	.XXX' ± 0.5'	1:1	1/1	MM
		DRW NO: MFC-XP		REV: A