

ARHA Series High Voltage

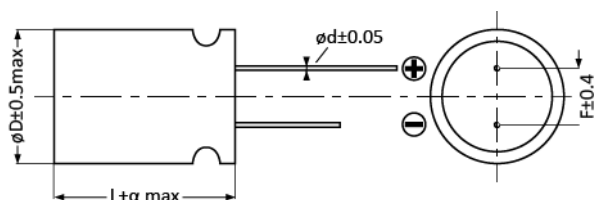
- Rated Voltage: 25~50Vdc
- Endurance 5000hrs at 105°C
- Suitable for AC-DC、DC-DC converters, voltage regulators and decoupling applications
- RoHS Compliant



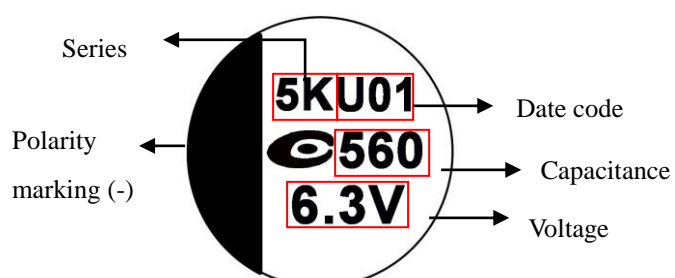
Specification

| | | | | |
|--------------------------|--|---------------------------------------|-------------------------|-------------|
| Category | Temperature Range | -55 to 105°C | Rated Voltage Range | 25 to 50Vdc |
| Rated Capacitance Range | 47 to 1500 (μF) | Capacitance Tolerance | ±20% (M) | |
| Surge Voltage | Rated voltage x1.15(at 105°C) | Dissipation Factor | 0.12max.(at 20°C 120Hz) | |
| Leakage Current | Shall not exceed values shown in standard ratings. | | | |
| Endurance | 105°C, 5000hrs, rated voltage applied | | | |
| | Appearance | No significant damage | | |
| | Capacitance Change | ≤ ±20% of the initial value | | |
| | DF(tanδ) | ≤ 150% of the initial specified value | | |
| | ESR | ≤ 150% of the initial specified value | | |
| | Leakage current | ≤ The initial specified value | | |
| Damp Heat (Steady State) | 60°C, 90 to 95% RH, 1000hrs, no voltage applied | | | |
| | Appearance | No significant damage | | |
| | Capacitance Change | ≤ ±20% of the initial value | | |
| | DF(tanδ) | ≤ 150% of the initial specified value | | |
| | ESR | ≤ 150% of the initial specified value | | |
| | Leakage current | ≤ The initial specified value | | |
| Surge Voltage | 1,000 cycles and each one includes charge with surge voltage specified at 105°C for 0.5min through a protective resistor (R=1kΩ) and discharge for 5.5min. | | | |
| | Appearance | No significant damage | | |
| | Capacitance Change | ≤ ±20% of the initial value | | |
| | DF(tanδ) | ≤ 150% of the initial specified value | | |
| | ESR | ≤ 150% of the initial specified value | | |
| | Leakage current | ≤ The initial specified value | | |

Dimensions and Marking



| SIZE Code | øD±0.5 max | L | α | ød±0.05 | F±0.4 |
|-----------|------------|------|-----|---------|-------|
| 08X8 | 8.0 | 8.0 | 1.0 | 0.6 | 3.5 |
| 08A2 | 8.0 | 11.5 | 1.5 | 0.6 | 3.5 |
| 08A6 | 8.0 | 16.0 | 1.5 | 0.6 | 3.5 |
| 08B0 | 8.0 | 20.0 | 1.5 | 0.6 | 3.5 |
| 10A2 | 10.0 | 11.5 | 1.5 | 0.6 | 5.0 |
| 10A6 | 10.0 | 16.0 | 1.5 | 0.6 | 5.0 |
| 10B0 | 10.0 | 20.0 | 1.5 | 0.6 | 5.0 |



ARHA Series **High Voltage**

| WV/Vdc (SV) | Cap (µF) | Size Code | Leakage Current (µA) | ESR (mΩmax/20%, 100k to300kHz) | Rated Ripple Current (mArms/ 105°C /100kHz) | Part No. |
|--------------|----------|-----------|----------------------|--------------------------------|---|-----------------|
| 25 (28.8) | 220 | 08A2 | 1,100 | 16 | 4,650 | 250ARHA221M08A2 |
| | 330 | 08A2 | 1,650 | 16 | 4,650 | 250ARHA331M08A2 |
| | 470 | 08A2 | 2,350 | 16 | 4,650 | 250ARHA471M08A2 |
| | 560 | 10A2 | 2,800 | 14 | 5,100 | 250ARHA561M10A2 |
| | 560 | 08A6 | 2,800 | 16 | 4,650 | 250ARHA561M08A6 |
| | 680 | 08A6 | 1,496 | 14 | 4,650 | 250ARHA681M08A6 |
| | 680 | 10A2 | 1,496 | 14 | 5,100 | 250ARHA681M10A2 |
| | 820 | 08B0 | 4,100 | 13 | 5,100 | 250ARHA821M08B0 |
| | 1000 | 10A6 | 5,000 | 14 | 5,200 | 250ARHA102M10A6 |
| | 1500 | 10B0 | 7,500 | 13 | 5,300 | 250ARHA152M10B0 |
| 35 (40.3) | 68 | 08X8 | 476 | 28 | 2,800 | 350ARHA680M08X8 |
| | 100 | 08X8 | 700 | 23 | 2,800 | 350ARHA101M08X8 |
| | 150 | 08A2 | 1,050 | 25 | 3,000 | 350ARHA151M08A2 |
| | 220 | 08A2 | 1,540 | 25 | 2,890 | 350ARHA221M08A2 |
| | 220 | 10A2 | 1,540 | 24 | 3,400 | 350ARHA221M10A2 |
| | 330 | 08A6 | 2,310 | 23 | 3,800 | 350ARHA331M08A6 |
| | 330 | 10A2 | 2,310 | 24 | 3,400 | 350ARHA331M10A2 |
| | 470 | 08B0 | 3,290 | 20 | 4,400 | 350ARHA471M08B0 |
| | 470 | 10A6 | 3,290 | 25 | 4,000 | 350ARHA471M10A6 |
| | 560 | 10A6 | 3,920 | 23 | 4,200 | 350ARHA561M10A6 |
| 50 (57.5) | 680 | 10B0 | 4,760 | 20 | 4,800 | 350ARHA681M10B0 |
| | 47 | 08A2 | 470 | 28 | 2,620 | 500ARHA470M08A2 |
| | 68 | 08A2 | 680 | 28 | 2,620 | 500ARHA680M08A2 |
| | 120 | 08A2 | 1,200 | 28 | 2,620 | 500ARHA121M08A2 |
| | 150 | 08A6 | 1,500 | 28 | 2,620 | 500ARHA151M08A6 |
| | 180 | 10A2 | 1,800 | 28 | 3,100 | 500ARHA181M10A2 |
| | 220 | 10A2 | 2,200 | 28 | 3,100 | 500ARHA221M10A2 |
| 390 | 10B0 | 3,900 | 23 | 3,800 | 500ARHA391M10B0 | |