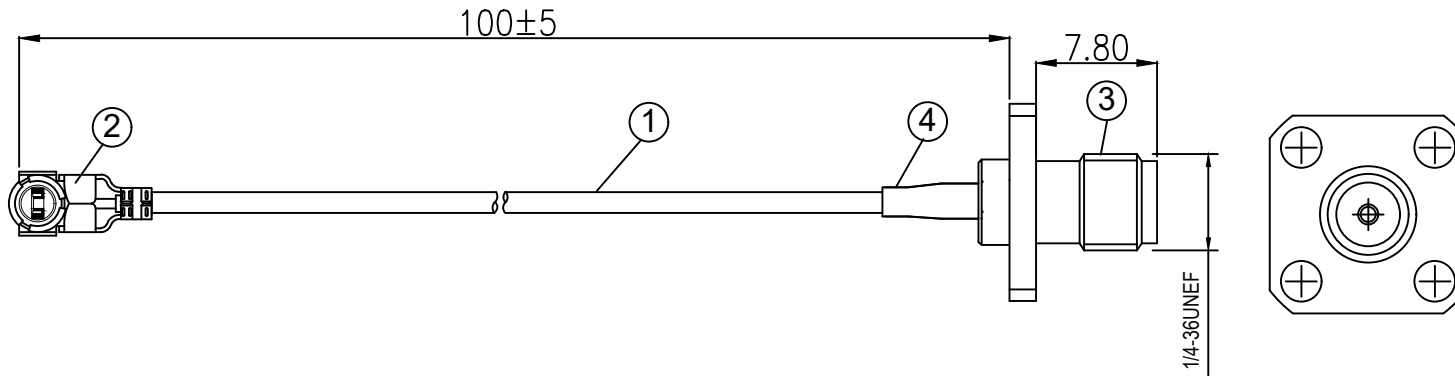


Kinghelm[®]

REVISIONS					
REV	NUMBER	DESCRIPTION	DWN	CHK	DATE
A		DESIGN	James		9/26



NOTES:

1. ELECTRICAL:
 - 1.1. VOLTAGE RATING:DCV 300V 10MS
 - 1.2. CONDUCTANCE RESISTANCE: 3.0 OHM/MAX.
 - 1.3. INSULATION RESISTANCE: 5.0M OHM/MIN.
 - 1.4. THE CABLE SHOULD BE 100% ELECTRICAL TEST
 - 1.5. IT SHOULD BE NO ANY OPEN/SHORT, MISWIRING AND INTERMITTENT FAILURES.
2. MATERIAL:
 - 2.1. SEE TABLE
3. ALL COMPONENTS ARE RoHS COMPLIANT.

ITEM NO.	PART NUMBER	DESCRIPTION	QTY.
④	套管	OD:2.5* 15 mm 黑色热缩套管	1
③	接头	SMA母头,母针, 4孔法兰, 镀金	1
②	端子	高仿I-PEX ,1.13端子, 镀金	1
①	同轴线	RG-1.13 黑色线 ,OD:1.10MM	AS

金航标电子有限公司

ALL DIMENSION ARE IN MM	DRAWN James	DATE 2023-3-1	TITLE KH-FLSMA-IPEX113-100(镀金四孔法兰SMA转1代IPEX 1.13黑色线线长100MM)
	CHKD. Frank	2023-3-1	
COMPUTER GENERATED IN SOLIDWORKS DO NOT SCALE THIS DRAWING	APPD. Scott	2023-3-1	
PROJECTION	GENERAL TOLERANCE FOR ANGLES X.X X.XX X.XXX ±1° ±0.3 ±0.25 ±0.150		SIZE B
CUSTOMER P/N:			DWG Number.
			REV A
	SCALE:Free	TYPE	SHEET 1 OF 1