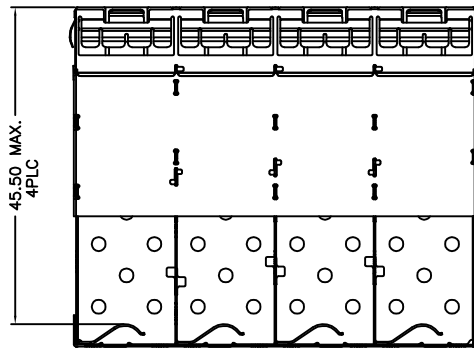
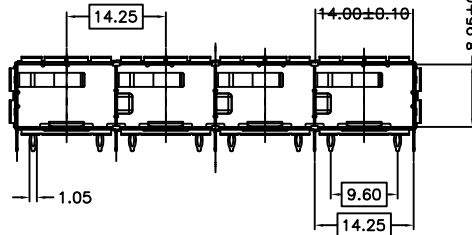
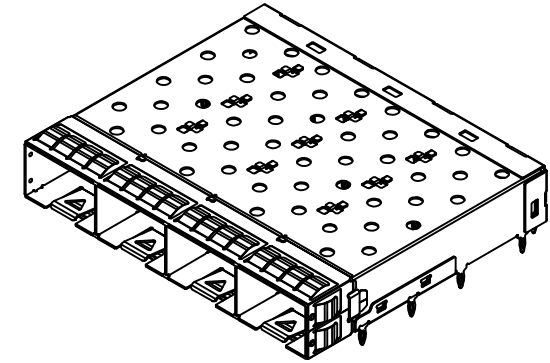
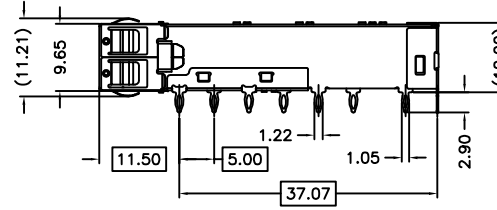
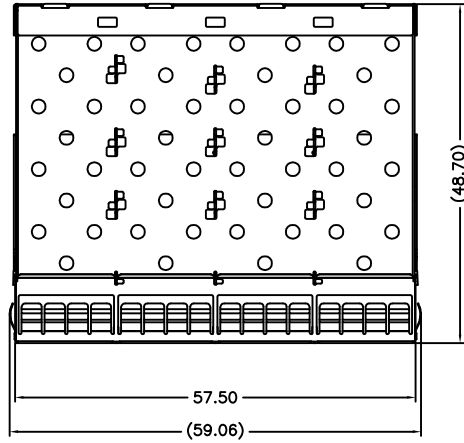


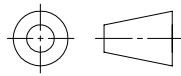

MECHANICAL DIMENSION

DATE	REV	ECN	APP'D.BY



NOTES:

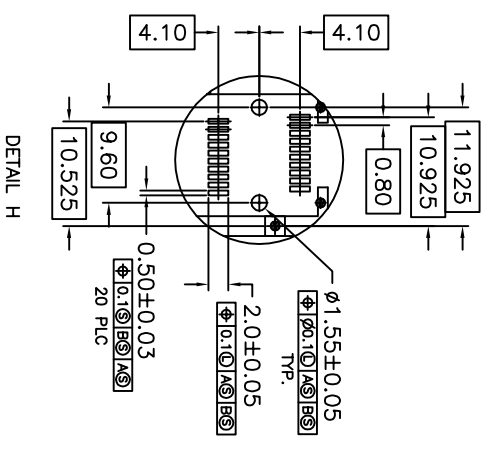
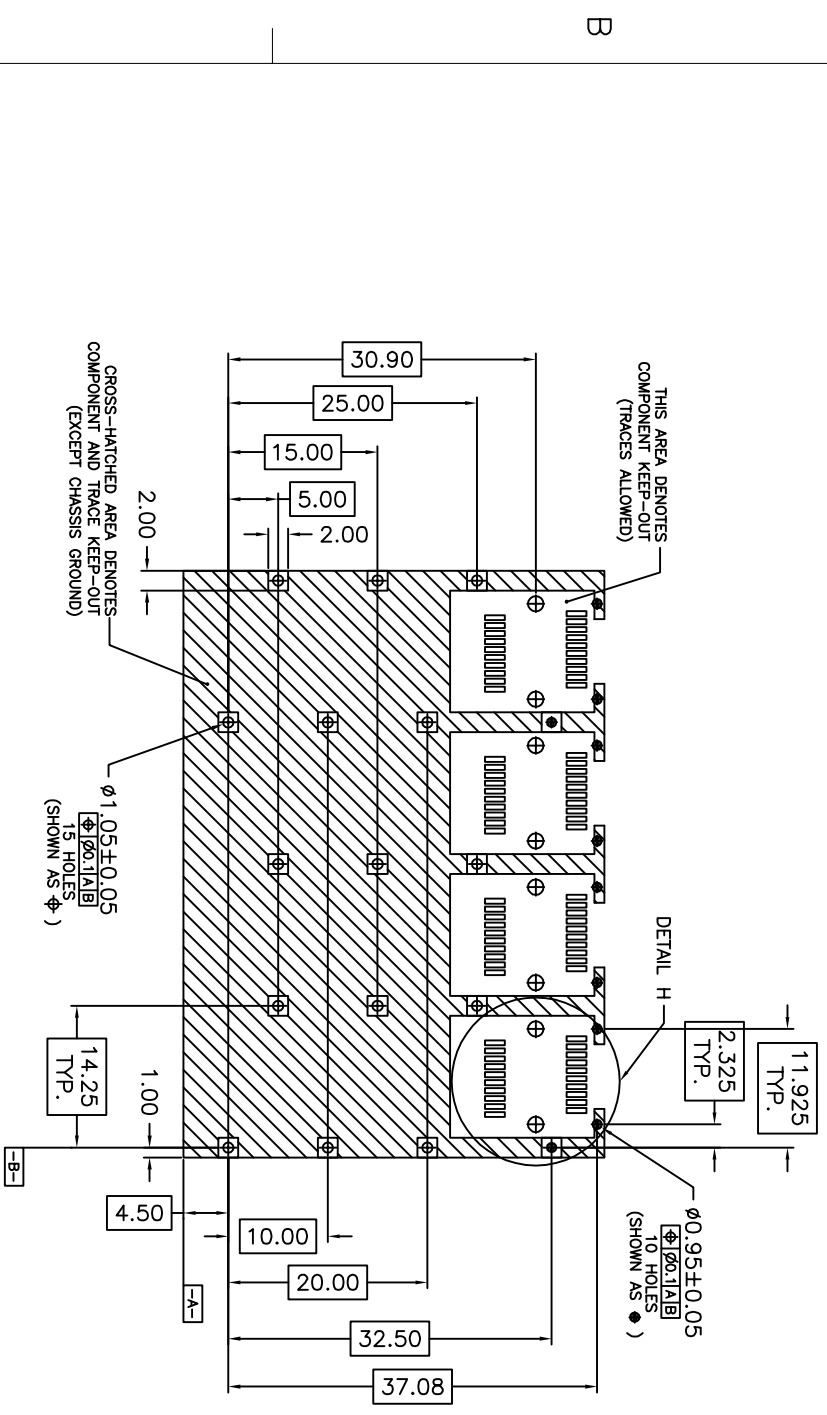
- 1.MATERIAL: NICKEL SILVER, THICKNESS 0.25mm
- 2.PACKAGING: TRAY PACKAGING
- 3.TEMPERATURE RANGE: -55°C TO +85°C

THIRD ANGLE PROJECTION	  深圳磁联达电子有限公司 Shen zhen cnd-tek Electronics Co., Ltd Web: http://www.cd-tek.com		
DO NOT SCALE DRAWING DRAWING IS SUBJECT TO CHANGE WITHOUT NOTICE	TITLE 1X4 SFP+ CAGE WITH EMI SPRING		
DIMENSIONS: mm(INCH)	PART NO:	DRN BY:	DATE:
.X±0.20 .XXX±0.10	AE71K4000010	TONY	12-10-08
.XX±0.15	Product: PCB JACK RJ45 RJ11 USB CONNECTOR SFP CONNECTOR TRANSFORMER	APPD BY:	DATE:
SHEET NO. 1 OF 3		JIM	9-23-09
		DWG NO:	REV:
		SFP20002	A10



MECHANICAL DIMENSION

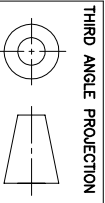
DATE	REV	ECN	APP'D, BY



NOTES:

- ▲ DATUM AND BASIC DIMENSIONS ESTABLISHED BY CUSTOMER
- ▲ PADS AND VIAS ARE CHASSIS GROUND, 11 PLACES
- ▲ THRU HOLES, PLATING OPTIONAL

RECOMMENDED PCB CONFIGURATION



DO NOT SCALE DRAWING
DRAWING IS SUBJECT TO CHANGE WITHOUT NOTICE
DIMENSIONS: mm(INCH)

.XX±0.20 .XXX±0.10
.XX±0.15
SHEET NO. 2 OF 3

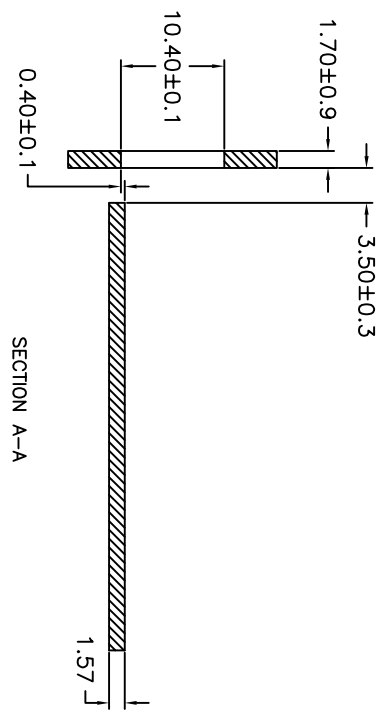
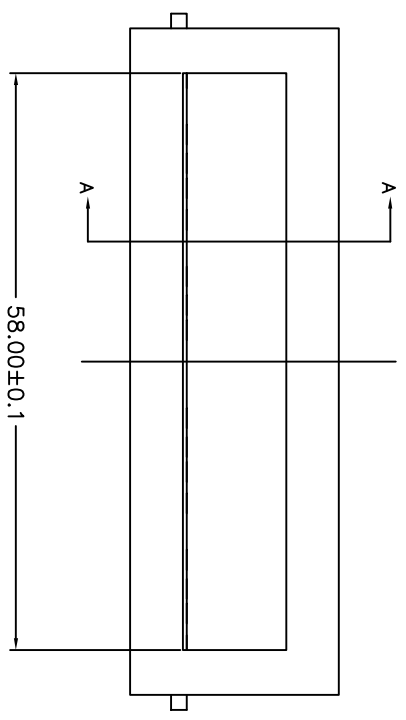
CND-TEK
深圳磁联达电子有限公司
Shen zhen cnd-tek Electronics Co., Ltd
Web: <http://www.cd-tek.com>

TITLE		PART NO.		DRN BY:	DATE:
1X4 SFP+ CAGE WITH EMI SPRING		AET7K4000010		TONY	12-10-08
Product: PCB JACK RJ45 R111 USB CONNECTOR SFP CONNECTOR TRANSFORMER		APPD BY:	DATE:	JIM	9-23-09
		DWG NO:	REV:	SFP20002	A10



MECHANICAL DIMENSION

DATE	REV	ECN	APP'D, BY



RECOMMENDED BEZEL DESIGN

NOTES:
 MINIMUM PITCH ILLUSTRATED, ENGLISH
 DIMENSIONS ARE FOR REFERENCE ONLY



THIRD ANGLE PROJECTION			
DO NOT SCALE DRAWING			
DRAWING IS SUBJECT TO CHANGE WITHOUT NOTICE			
DIMENSIONS: mm(INCH)			
.XX±0.15	.XXX±0.10	.X±0.20	.XXX±0.10
SHEET NO. 3 OF 3			
CDP-TEK 深圳磁联达电子有限公司 Shen zhen cnd-tek Electronics Co., Ltd Web: http://www.cd-tek.com		PART NO: AE71K4000010 1X4 SFP+ CAGE WITH EMI SPRING	
Product: PCB JACK RJ45 R111 USB CONNECTOR SFP CONNECTOR TRANSFORMER		DRN BY: TONY APPD BY: JIM DWG NO: SFP20002	DATE: 12-10-08 REV: A10