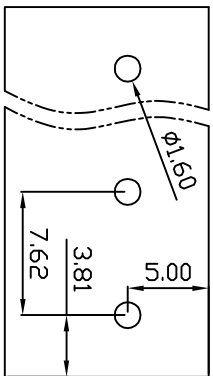
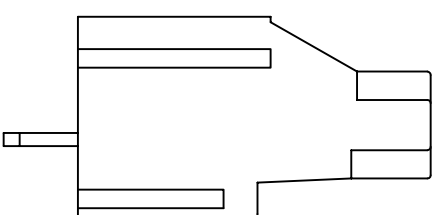
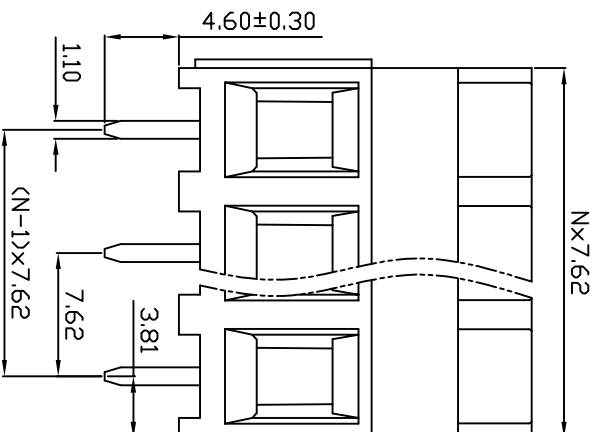
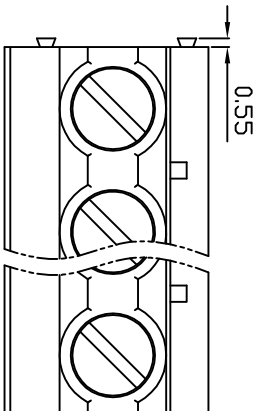
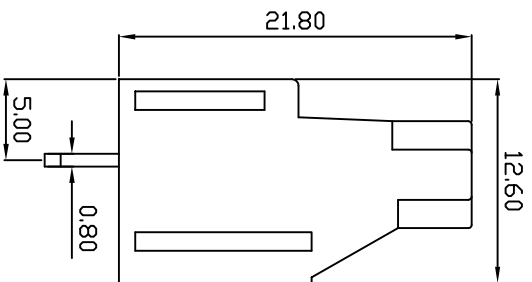


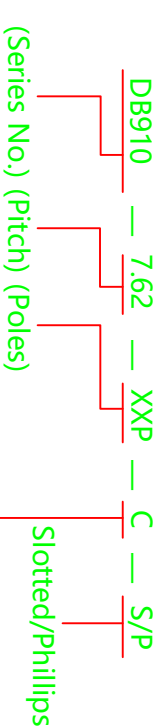
linear dimension(Tolerances Standard GB/T 14486-2008)										
variable range	6 to 6	over 10 to 10	over 30 to 30	over 60 to 60	over 100 to 100	over 160 to 160	to 10 to 10	over 10 to 10	over 100 to 100	
tolerance	±0.20	±0.30	±0.50	±0.70	±1.00	±1.30	±1.60	0.10	0.30	0.60



PCB Layout



UL/CUL 技术参数	UL/CUL Technical Data			cPA 100		
等级	Use Group	B	C	D		
额定电压	Rated Voltage	[V]	300	-	300	
额定电流	Rated Current	[A]	30	-	10	
接线范围	Wire Range					
单/多芯线	Solid/Stranded	[AWG]			26-10	
耐电压	Withstanding Voltage				1600V/1Min	
IEC 技术参数		DE				
IEC Technical Data						
过电压类别	Overvoltage Category	III	III	II		
污染等级	Contamination Class	3	2	2		
额定电压	Rated Voltage	[V]	500	630	1000	
额定电流	Rated Current	[A]	32	32	32	
额定冲击电压	Impulse withstand voltage	[kV]	6	6	6	
导线截面积	Conductor cross section					4
硬质/柔性导线	Solid/ flexible					
材料	Material					
绝缘材料	Insulation Material	PA66				
阻燃等级	Inflammability	UL94V-0				
导体材料	Contact Material	铜合金 Copper alloy				
导体表面镀层	Contactive Coating	镀锡 Sn Plated				
一般参数	Other Data					
间距 Pitch	[mm]	7.62				
极数 Poles	[P]	02-24				
剥线长度 Stripping Length	[mm]	7				
螺丝 Screw/扭矩 Torque(NxL)	[N.m]	M3.0x5				
工作温度 Operating temperature	[°C]	-40~+105				
引针尺寸 Pin Dimensions	[mm]	0.80x1.10				
PCB孔径 PCB Hole Diameter	[mm]	1.60				



(Color) : 1.(Green) 2.(Black) 3.(Blue) 4.(Clear) 5.(Gray) 6.(Orange) 7.(Red) 8.(White) 9.(Yellow)

**DORABO**  
宁波地博电气有限公司  
Ningbo Dorabo Electric CO., Ltd

APPD: Jiting Chen 2022.4.10

CHKD: Duck Mao 2022.4.10

DRFT: Steven Lu 2022.4.10

NAME: DB910-7.62-XXP-C-S

SIZE: A4

TYPE: CUSTOMER\_DRAWING SCALE: 1:1 SHEET 1/1