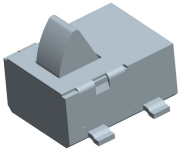




LTEM NO.: TC-215 -C (Three D)
(L4.75mm × W3.60mm × H3.75mm DETECTOR-SWITCH)



Technical parameter

PROJECT	LEVEL	A[better product]		B[average product]	
Electrical Properties	Contact Rating	50mA, 12V DC			
	Initial Contact Resistance	300mΩ max.		500mΩ max.	
	Insulation Resistance	100MΩ min.500V DC	Skey/PD: 100MΩ min.300V DC		
	Withstand Voltage	350V AC for 1 minute	250 V AC for 1 minut		
Durable Performance	There No Load	150,000 Cycles		120,000 Cycles	
	Rated Load	120,000 Cycles		100,000 Cycles	
Storage temp.		-30℃~+75℃(Operating Temp:)			

表面貼裝 SMT

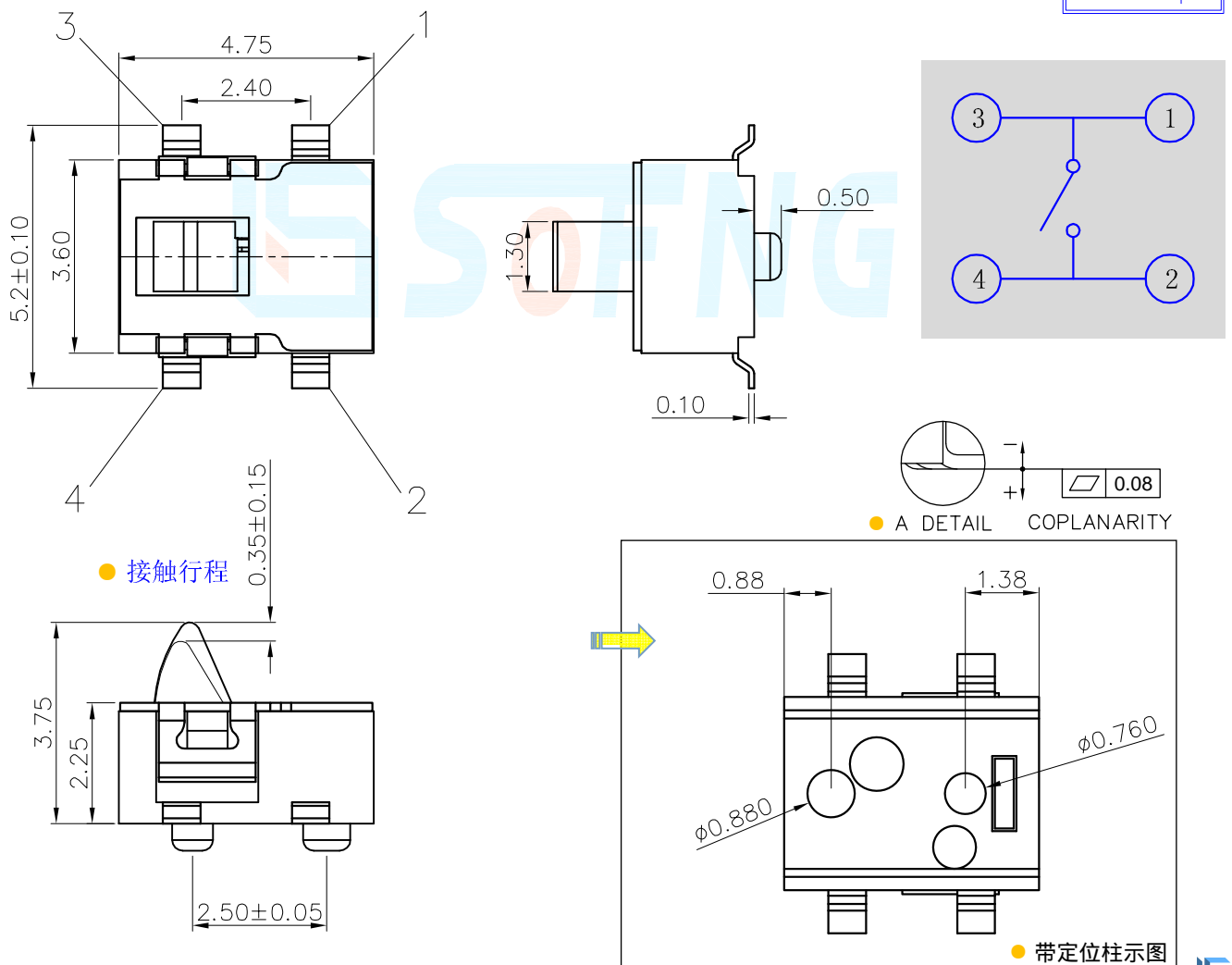
正向操作 LATERAL

精密部品 NICETY

可靠 STABILIZE

適合環保 RoHS

Unit:mm



Operating Force

Inward
Stroke

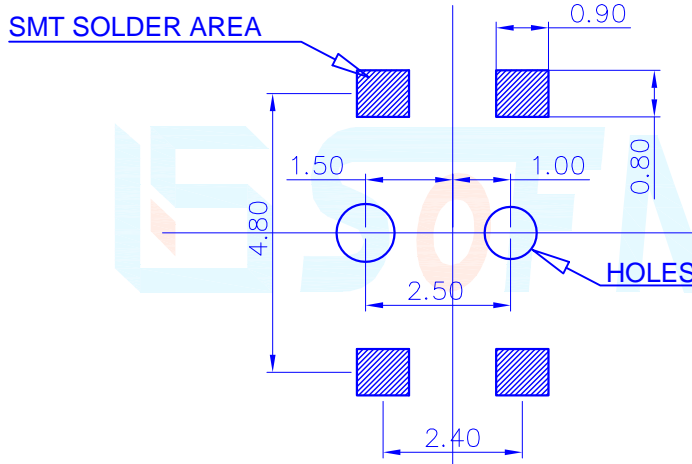
0.40N (100grams) ±15gf

0.35mm ±0.15mm

Solder-ability (Max.)

IR Reflow: 255°C, 5sec.

Manual: 350°C, 3sec.



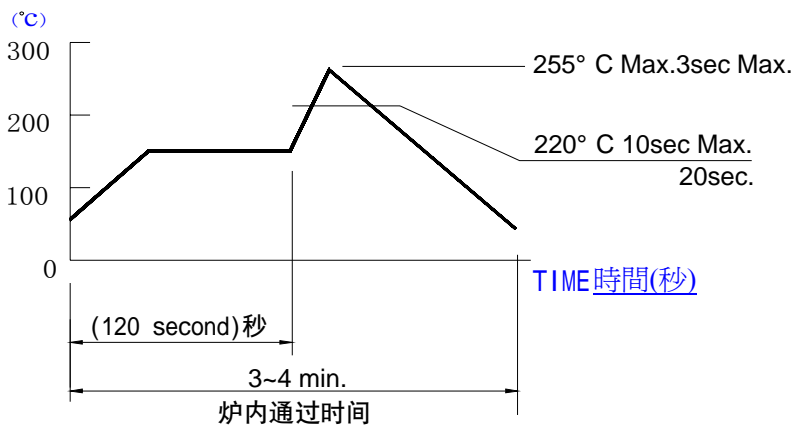
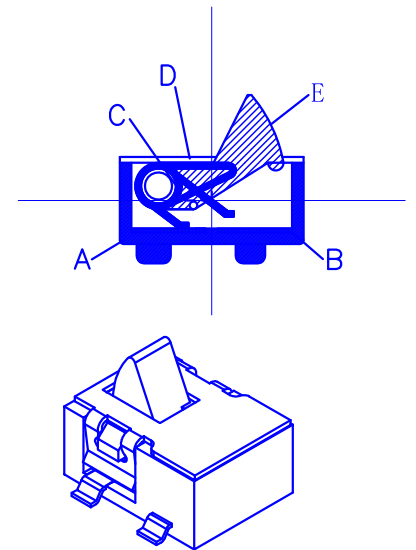
DECIMALS	ANGLES
.X : ±0.20	X.° : ±1.5°
.XX : ±0.10	X.X° : ±1.0°
.XXX : ±0.05	.XXX° : ±0.5°

Material declaration



Material declaration

No.	NAME	Type	Description
① A	基座 CASE	1	LCP 30%(Gray)耐热塑胶 UL94V-0
② B	端子 Fixed Contact	2	QSn6.5-01 (t=0.10mm)磷青铜【锡基镀银】
③ C	弹簧	1	QSn6.5-01 (od=0.15mm)磷青铜【锡基镀银】
④ D	外壳 Cover	1	SUS301-3/4H(t=0.15mm)不锈钢
⑤ E	按柄#1 Stem	1	PPA(Black)耐热尼龙
焊接耐 热	手工焊接	300 ± 10°C 3 + 1 S	
	浸焊	260 ± 5°C 8 + 3 S	250 ± 5°C 5 + 3 S
	回流	255°C max 5S max	245°C max 5S max



注記 NOTICE

1. 碩方公司擁有最終解釋權; The company reserves the right of final interpretation;
2. 文件禁止外洩、轉載; Leaked and reproduced prohibited;
3. 未經授權修改無效。Modify is invalid.

本品不屬於危害性廢棄物,須丟棄時可以委託回收商予以回收再生處理。
Products do not belong to •

運送時本產品不要直接與水、酸鹼性化學物質接觸,或放置於含有以上氣體環境中,並且需要注意會有滑落、側翻的危險發生; 運輸過程中不能有碰撞或者擠壓,須保證溫度與濕度適中 [常溫 25°C, 濕度在 50°C 以內], 不可導致材料變形或氧化。