

FEATURES

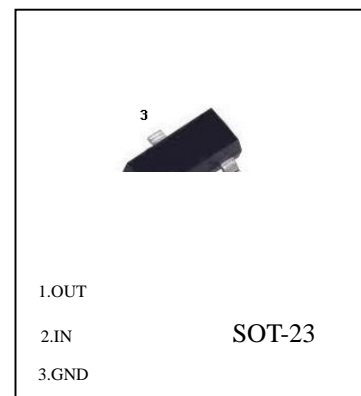
Maximum Output current I_O : 0.1 A

Output voltage V_O : 5 V

Continuous total dissipation P_D : 0.35 W ($T_a = 25$)

ABSOLUTE MAXIMUM RATINGS (Operating temperature range applies)

Parameter	Symbol	Value	Unit
Input Voltage	V_I	30	V
Operating Junction Temperature Range	TOPR	0-125	
Storage Temperature Range	T_{STG}	-65-150	

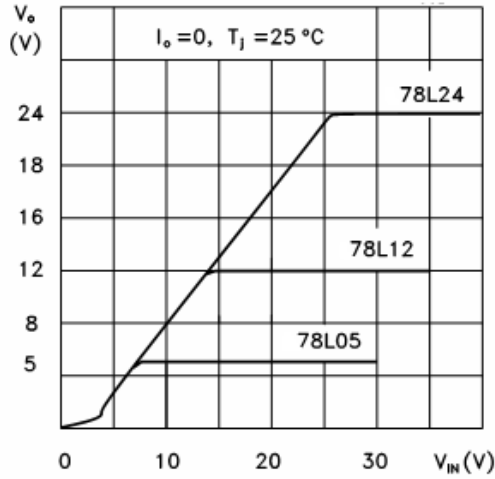


ELECTRICAL CHARACTERISTICS AT SPECIFIED VIRTUAL JUNCTION TEMPERATURE ($V_i=10V, I_o=40mA, C_i=0.33\mu F, C_o=0.1\mu F$, unless otherwise specified)

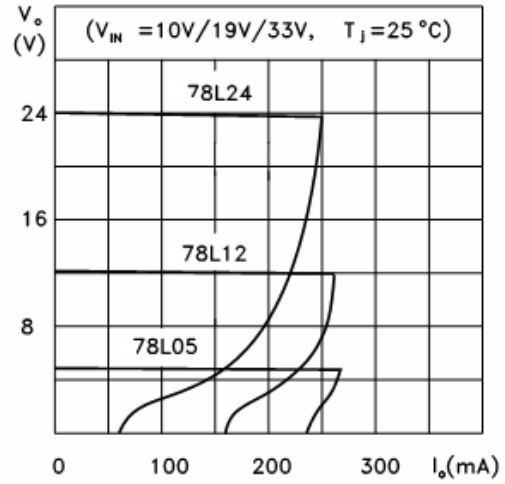
Parameter	Symbol	Test conditions	Min	Typ	Max	Unit	
Output voltage	V_o		25	4.8	5.0	5.2	V
		7V V_i 20V, $I_o=1mA\sim 40mA$	0-125	4.75	5.0	5.25	V
		$I_o=1mA\sim 70mA$		4.75	5.0	5.25	V
Load Regulation	V_o	$I_o=1mA\sim 100mA$	25		15	60	mV
		$I_o=1mA\sim 40mA$	25		8	30	mV
Line regulation	V_o	7V V_i 20V			32	150	mV
		8V V_i 20V	25		26	100	mV
Quiescent Current	I_q		25		3.8	6	mA
Quiescent Current Change	I_q	8V V_i 20V	0-125			1.5	mA
		1mA V_i 40mA	0-125			0.1	mA
Output Noise Voltage	V_N	10Hz f 100KHz	25		42		μV
Ripple Rejection	RR	8V V_i 20V, $f=120Hz$	0-125	41	49		dB
Dropout Voltage	V_d		25		1.7		V



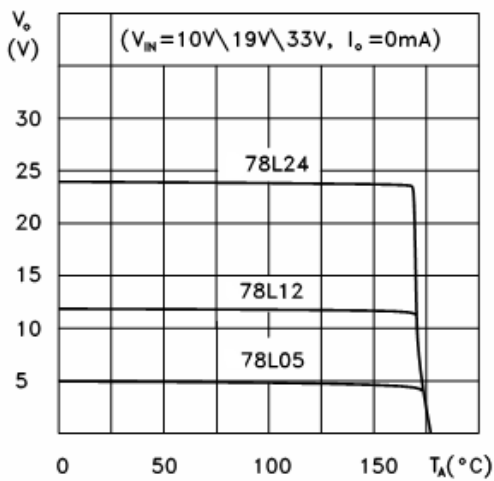
Output Characteristics



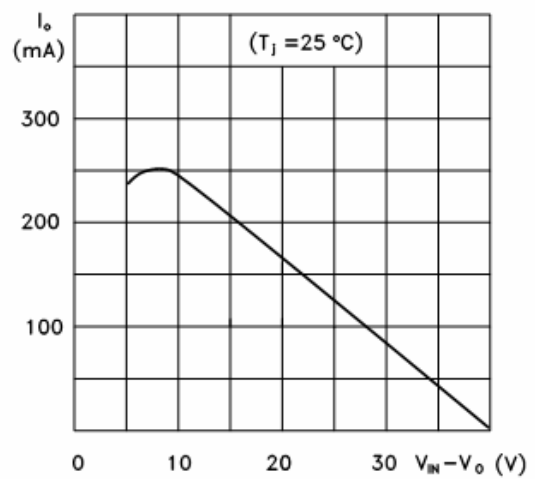
Load Characteristics



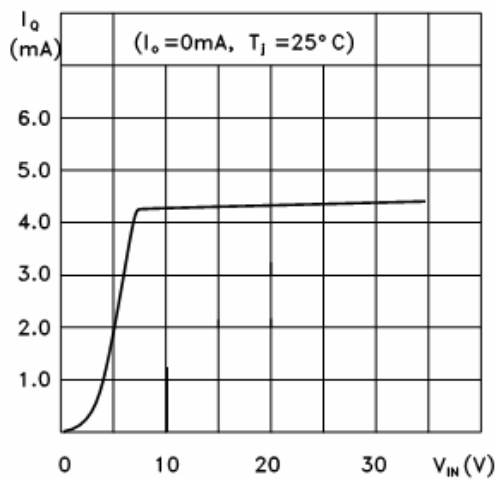
Thermal Shutdown



Short Circuit Output Current



Quiescent Current vs Input Voltage

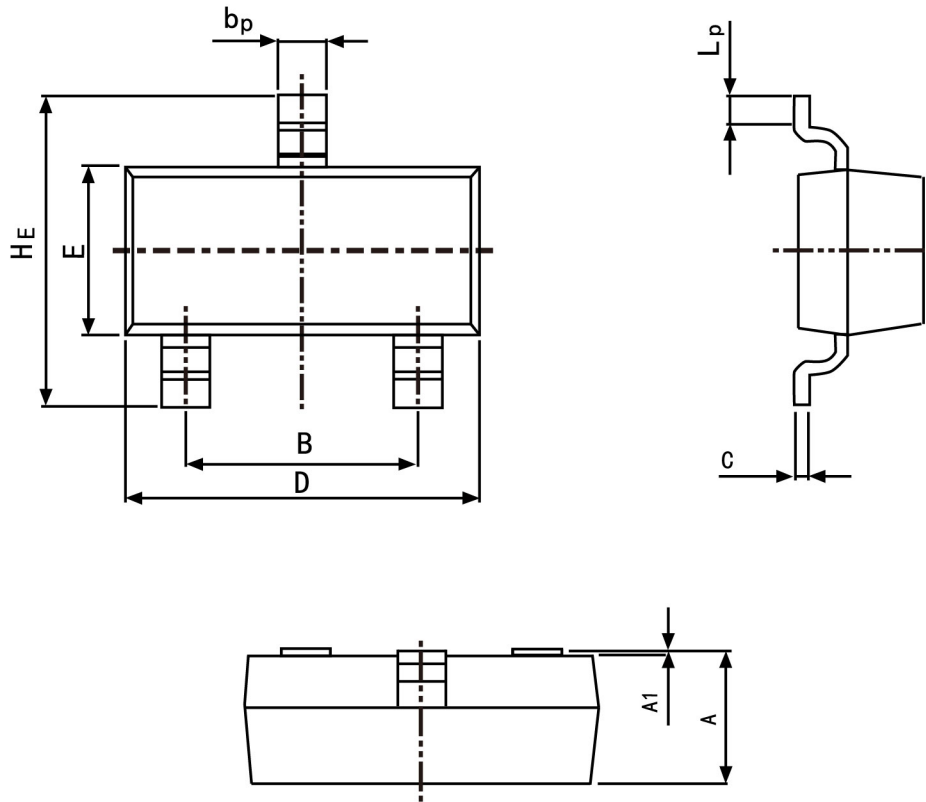




PACKAGE OUTLINE

Plastic surface mounted package; 3 leads

SOT-23



Symbol	Dimension in Millimeters	
	Min	Max
A	0.95	1.40
B	1.78	2.04
bp	0.35	0.50
C	0.08	0.19
D	2.70	3.10
E	1.20	1.65
HE	2.20	3.00
A1	0.100	0.013
Lp	0.20	0.50