

NOTES:

SPECIFICATION:

1. CURRENT RATING: 5.0A MAX
2. VOLTAGE: 100 VAC
3. TEMPERATURE RANGE: -30 °C ~ 85 °C
4. CONTACT RESISTANCE: 40 MILLIONHM MAX
5. INSULATION RESISTANCE: 100 MEGOHMS MIN.
6. INSERTION FORCE : 5N~20N
7. UNMATING FORCE: 8N~20N
8. DURABILITY: 10,000 CYCLES

USB TYPE-C PIN ASSIGNMENTS

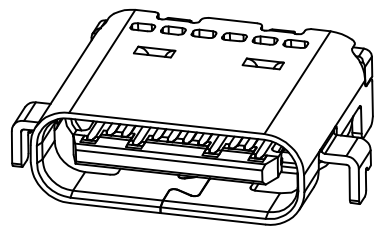
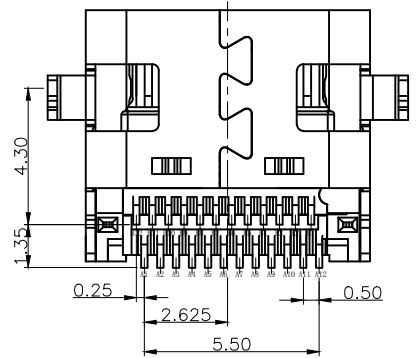
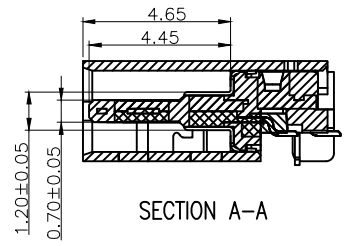
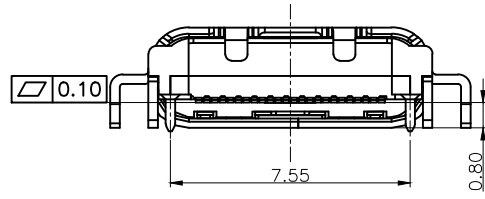
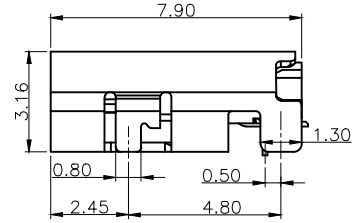
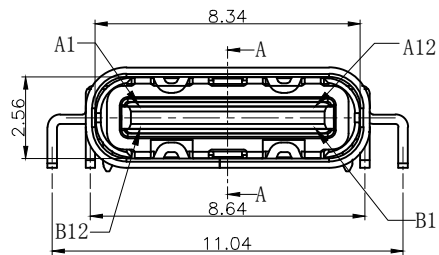
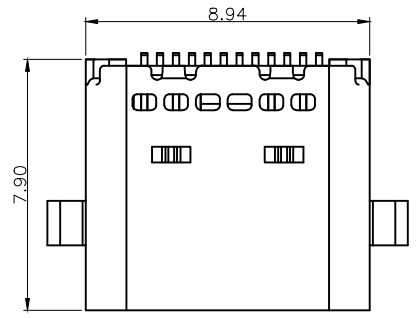
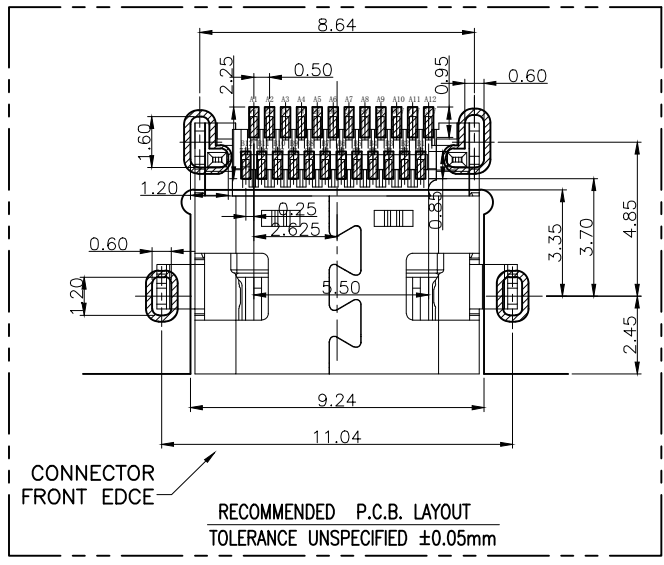
| PIN | SIGNAL NAME | PIN | SIGNAL NAME |
|-----|-------------|-----|-------------|
| A1 | GND | B12 | GND |
| A2 | SSTXP1 | B11 | SSRXP1 |
| A3 | SSTXN1 | B10 | SSRXN1 |
| A4 | VBUS | B9 | VBUS |
| A5 | CC1 | B8 | SBU2 |
| A6 | DP1 | B7 | DN2 |
| A7 | DN1 | B6 | DP2 |
| A8 | SBU1 | B5 | CC2 |
| A9 | VBUS | B4 | VBUS |
| A10 | SSRXN2 | B3 | SSTXN2 |
| A11 | SSRXP2 | B2 | SSTXP2 |
| A12 | GND | B1 | GND |

| P/N | (L) | COLOR | 额定电流 |
|---------------------------|--------|-------|------|
| HC-TYPE C-24P-MM0.8-5A-01 | 7.90mm | 蓝色 | 5A |

Ordering Information

HC-TYPE C - 24P - ** - *A - F* - * - 01

| | | | | | |
|--|---|--|-------------------------------|-------------------------|--|
| Pin 4P 6P 8P 12P 16P 24P | Type Type DS-SMT MM-Mnt Cst-Center VS-Vertical CP-Clip FL-Flag | Mount (板式) Mount (贴片) Mount (贴片) Mount (贴片) Mount (贴片) Mount (贴片) Mount (贴片) | Current Rated 5A 10A | Foot Length 0.8mm | Colour Black White Blue Orange Purple Yellow |
|--|---|--|-------------------------------|-------------------------|--|



| | | | GENERAL TOLERANCE | | 制图 DRAWING | | | | |
|-----------|------------------------|-------------------|-------------------|-------|------------------|--|--|--|--|
| | | | DIM | TOL | 审核 CHECK | | | | |
| | | | X.X | ±0.30 | 批准 APPROVAL | | | | |
| | | | X.XX | ±0.20 | 比例 SCALE | | | | |
| | | | X.XXX | ±0.10 | 投影 Projection | | | | |
| 序号 No. | 变更内容 MODIFY CONTENT | 日期 MODIFY DATE | Angle | ±3.0° | | | | | |

深圳市华灿天禄电子有限公司
ShenzhenhuacantianluELECTRONICS CO.,LTD

| | | | |
|------------------|-----------------------------------|-------------|-----|
| 产品名称 TITLE | TYPE CF 24P 沉板0.8mm L7.90mm 有柱 | 版本 REV. | A |
| 产品料号 PART NO. | HC-TYPE C-24P-MM0.8-5A-01 | 单位 UNITS | mm |
| 材料 MATERIAL | | 页次 SHEET | 1/2 |

