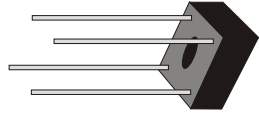




KBPC10005 THRU KBPC1010

SINGLE PHASE 10.0 AMP BRIDGE RECTIFIERS



FEATURES

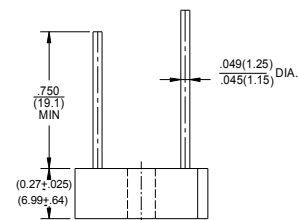
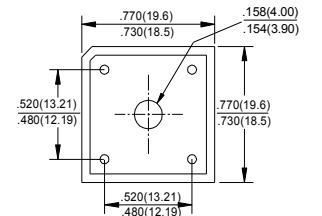
- * Ideal for printed circuit board
- * Low forward voltage
- * Low leakage current
- * Mounting: Hole thru for #6 screw
- * Mounting position: Any
- * Weight: 3.36 grams

VOLTAGE RANGE

50 to 1000 Volts

CURRENT

10.0 Ampere



Polarity shown on side of case, Positive lead by beveled corner.
Dimensions in inches and (millimeters)

MAXIMUM RATINGS AND ELECTRICAL CHARACTERISTICS

Rating 25°C ambient temperature unless otherwise specified.
Single phase half wave, 60Hz, resistive or inductive load.
For capacitive load, derate current by 20%.

| TYPE NUMBER | KBPC10005 | KBPC1001 | KBPC1002 | KBPC1004 | KBPC1006 | KBPC1008 | KBPC1010 | UNITS | |
|---|-----------|----------|----------|----------|----------|----------|----------|------------|----|
| Maximum Recurrent Peak Reverse Voltage | 50 | 100 | 200 | 400 | 600 | 800 | 1000 | V | |
| Maximum RMS Voltage | 35 | 70 | 140 | 280 | 420 | 560 | 700 | V | |
| Maximum DC Blocking Voltage | 50 | 100 | 200 | 400 | 600 | 800 | 1000 | V | |
| Maximum Average Forward Rectified Current .375"(9.5mm) Lead Length at Tc=50°C | | | | | | | | 10.0 | A |
| Peak Forward Surge Current, 8.3 ms single half sine-wave superimposed on rated load (JEDEC method) | | | | | | | | 200 | A |
| Maximum Forward Voltage Drop per Bridge Element at 5.0A D.C. | | | | | | | | 1.1 | V |
| Maximum DC Reverse Current Ta=25°C | | | | | | | | 10 | A |
| at Rated DC Blocking Voltage Ta=100°C | | | | | | | | 100 | A |
| Operating Temperature Range, Tj | | | | | | | | -65 — +150 | °C |
| Storage Temperature Range, Tstg | | | | | | | | -65 — +150 | °C |

RATING AND CHARACTERISTIC CURVES (KBPC10005 THRU KBPC1010)

FIG.1-TYPICAL FORWARD CURRENT DERATING CURVE

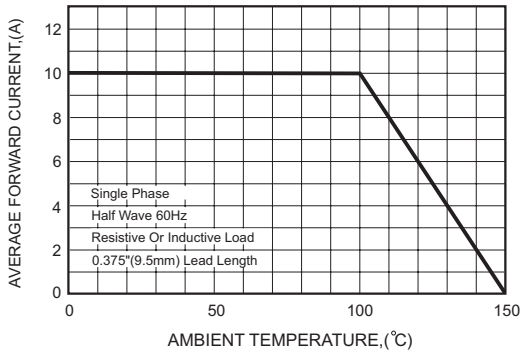


FIG.2-MAXIMUM NON-REPETITIVE FORWARD SURGE CURRENT

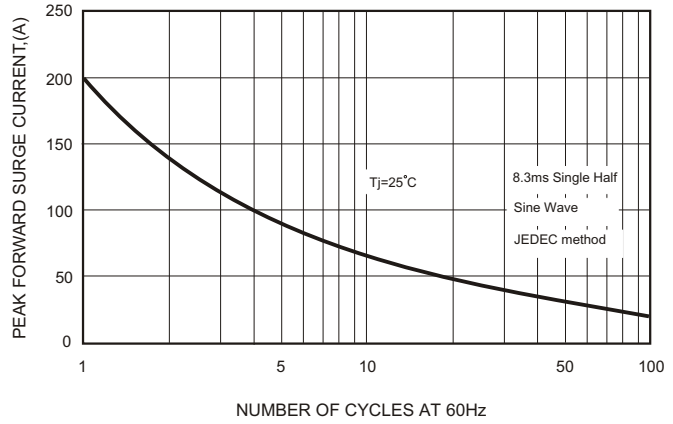


FIG.3-TYPICAL FORWARD CHARACTERISTICS

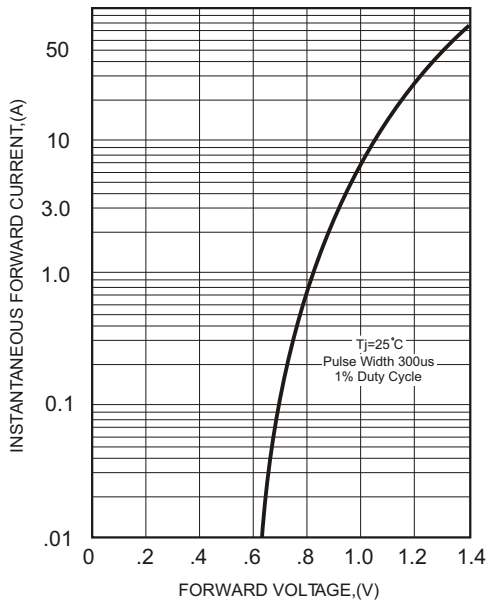


FIG.4-TYPICAL REVERSE CHARACTERISTICS

