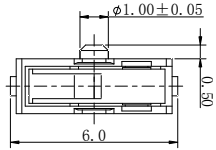


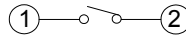
1	2	3	4	5	6	7	8	9	10	11	12	13	14	15
---	---	---	---	---	---	---	---	---	----	----	----	----	----	----

ROHS
Compatible

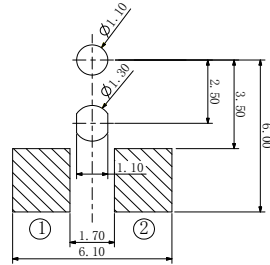
REV (版本)	MARK (标记)	DESCRIPTION (描述)	DATE (日期)	APPROVED (批准)



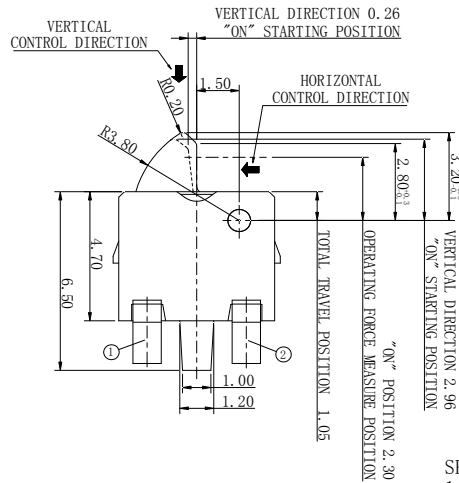
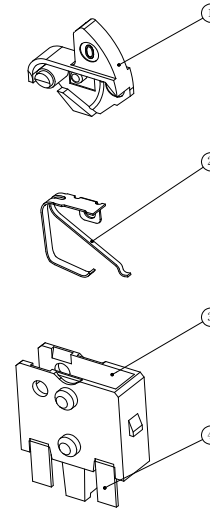
ELECTRICAL DIAGRAM



PCB WELDING DIMENSIONS



MATERIAL PORTFOLIO CHART



REFERENCE DRAWING

SPECIFICATION

1. Rating: DC 20V 50mA
2. Contact resistance: 1Ω Max.
3. Insulation resistance: 100MΩ Min, 100V/min
4. Dielectric strength: 100V AC/min
5. Operating force: 50gf Max.
6. Operating life: 50,000 cycles
7. Operating temp: -10°C to +60°C
8. Storage temp: -20°C to +70°C

NO (序号)	PART NAME (部件名)	QTY (数量)	MATERIAL (材料)	REMARK (备注)
4	TERMINAL (端子)	1	PHOSPHOR	Ag plating
3	HOUSING (底座)	1	PA	Black
2	CONTACT (动触点)	1	SUS	Ag plating
1	STEM (按钮)	1	LCP	Black
SCALE: 10:1	VIEW: 视图	UNIT: mm	ITEM 产品类型	DETECTION SWITCH
比例	6x6.5检测开关	单位	PART NO 型号	常开检测开关
			DWG. NO 图号	YTL-M01L-AA



深圳市怡远科技有限公司
SHENZHEN YIYUAN TECHNOLOGY CO. LTD

UNSPECIFIED TOLERANCE 未指定的公差		DRAWN 制图	DATE 日期
ANGULAR (角度)	±10°	CHKD 审核	2021.03.18
16 < L ≤ 63	±0.4	ROGER LI	2021.03.18
4 < L ≤ 16	±0.3	APVD 批准	2021.03.18
L ≤ 4	±0.2	ROC ZHAO	2021.03.18