

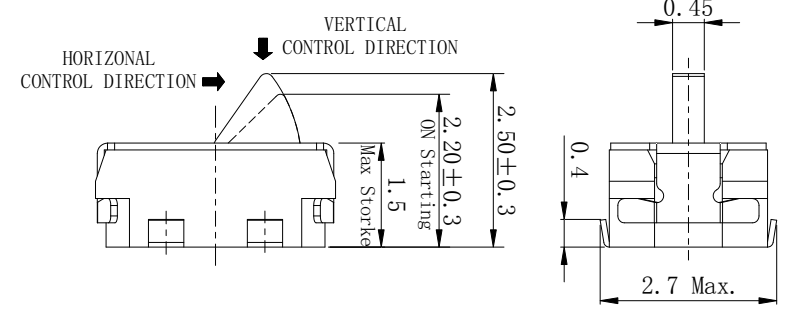
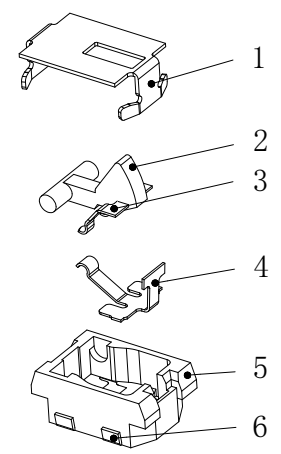
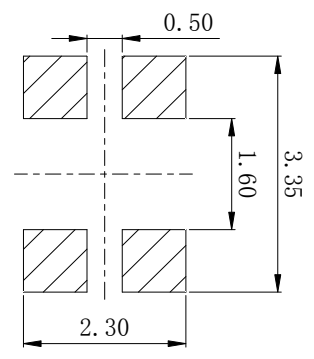
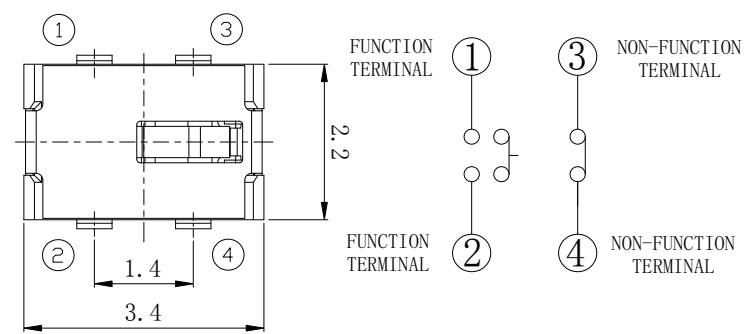
REV (版本)	MARK (标记)	DESCRIPTION (描述)	DATE (日期)	APPROVED (批准)

ROHS
Compatible

ELECTRICAL DIAGRAM

PCB WELDING DIMENSIONS

MATERIAL PORTFOLIO CHART



SPECIFICATION
 1. Rating:DC 5V 10mA Max / DC 3V 50µA Min
 2. Contact resistance:500mΩ Max.
 3. Insulation resistance:100MΩ Min, 100V/min
 4. Dielectric strength:100V AC/min
 5. Travel:1.0mm Max.
 6. Operating force: 25gf Max.
 7. Operating life:50,000 cycles
 8. Operating temp:-10℃to+60℃
 9. Storage temp:-20℃to+70℃

REFERENCE DRAWING

NO (序号)	PART NAME (部件名)	QTY (数量)	MATERIAL (材料)	REMARK (备注)
6	TERMINAL (端子)	1	PHOSPHOR	Ag plating
5	HOUSING (底座)	1	PA	Black
4	SPRING (弹簧片)	1	SUS	
3	CONTACT (接触片)	1	PHOSPHOR	Ag plating
2	STEM (按钮)	1	PA	Black
1	COVER (盖板)	1	SUS	

UNSPECIFIED TOLERANCE (未指定的公差)	DRAWN (制图)	DATE (日期)	SCALE: 10:1 (比例)	ITEM (产品类型)	DETECTION SWITCH (检测开关)
ANGULAR (角度) ±10°	制 图	2021.05.25	VIEW: 视图	PART NO (型号)	2. 2x3.4检测开关
16 < L ≤ 63 ±0.4	审 核	2021.05.25	UNIT:mm (单位)	DWG. NO (图号)	YTK-U02-AA
4 < L ≤ 16 ±0.3	APVD (批准)	2021.05.25			
L ≤ 4 ±0.2					

YIYUAN 深圳市怡远课有限公司
SHENZHEN YIYUAN TECHNOLOGY CO. LTD