

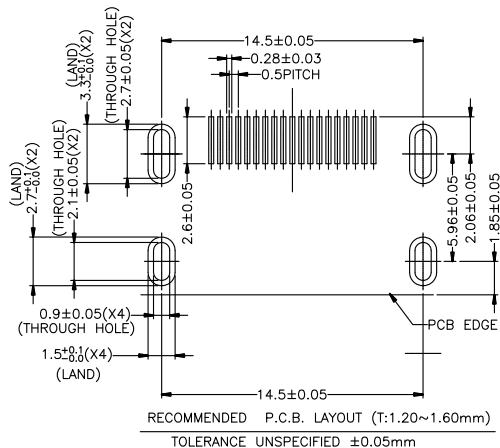
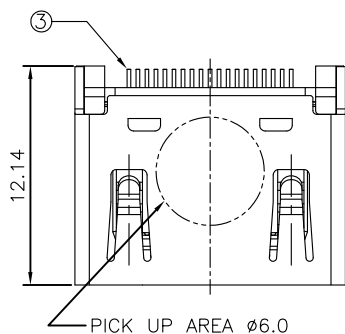
RoHS

MAPX

MODIFICATION

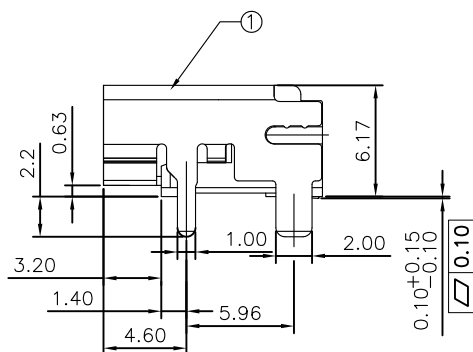
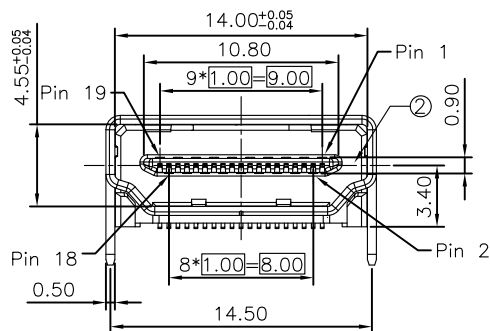
DRW

DATE



RECOMMENDED P.C.B. LAYOUT (T:1.20~1.60mm)  
TOLERANCE UNSPECIFIED ±0.05mm

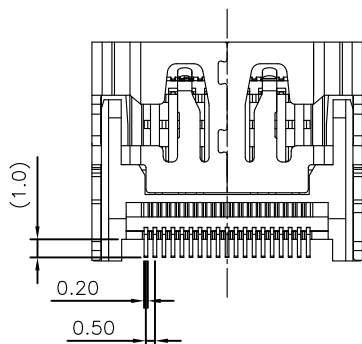
- PRODUCT APPLICATION:  
7: HIGH DEFINITION (HD) CONNECTOR
- PRODUCT SORT:  
1: FINISHED PRODUCTS
- PRODUCT DETAIL SERIES:  
001: HDMI A TYPE, R/A, SMT
- PIN NUMBER: :  
19: 19Pin
- SHELL PLATED:  
0: NICKEL PLATED;  
2: GOLD PLATED 0.3u";
- PRODUCT STRUCTURE TYPE:  
1: SHELL MATERIAL: COPPER ALLOY, T=0.5mm,  
NO BOTH SIDES SPRINGS
- CONTACTS PLATING:  
1: SELECTIVELY GF PLATING  
2: SELECTIVELY GOLD PLATING 15u";  
7: SELECTIVELY GOLD PLATING 3u";  
8: SELECTIVELY GOLD PLATING 5u";
- SUQUENCE CODE  
1: TAPE REEL PARKAGE, RoHS COMPLIANCE.
- SUQUENCE CODE  
SS: THE FORE SHELL TAILS WIDTH: 1.0mm .  
THE FORE STAND OFF POSITION: 3.20mm.



**SPECIFICATIONS**

- OPERATING CURRENT: 0.5A MAX.
- OPERATION TEMPERATURE: -25°C TO +85°C
- DIELECTRIC WITHSTANDING VOLTAGE:  
500Volts AC BETWEEN ADIACENT TERMINAL (UNMATE)  
300Volts AC BETWEEN ADIACENT TERMINAL (MATE)
- INSULATION RESISTANCE:  
100Mohm MIN. (UNMATED); 10Mohm MIN. (MATED)
- HDMI SPECIFICATION COMPLIANCE

ITEM	NAME	Q'TY	NOTES
3	CONTACTS	19	COPPER ALLOY, GOLD PLATED OVER NICKEL ON CONTACT AREA AND 80u" MIN. TIN PLATED OVER NICKEL ON SOLDER TAILS
2	HOUSING	1	THERMOPLASTIC UL94V-0
1	SHELL	1	COPPER ALLOY, NICKEL PLATED



ROHS COMPLIANCE

<p>产品图 PRODUCT CHART DWG</p> <p>公差一览表 TOLERANCE UNLESS OTHERWISE</p> <table border="1"> <tr> <td>X.</td> <td>±0.25</td> <td>X.</td> <td>±5°</td> </tr> <tr> <td>.X</td> <td>±0.15</td> <td>.X</td> <td>±2°</td> </tr> <tr> <td>.XX</td> <td>±0.10</td> <td>.XX</td> <td>±1°</td> </tr> <tr> <td>.XXX</td> <td>±0.05</td> <td>.XXX</td> <td>±0.5°</td> </tr> </table>		X.	±0.25	X.	±5°	.X	±0.15	.X	±2°	.XX	±0.10	.XX	±1°	.XXX	±0.05	.XXX	±0.5°	<p>深圳市精拓金电子有限公司 Shenzhen Jing Tuo Jin Electronics Co., Ltd.</p>					
X.	±0.25	X.	±5°																				
.X	±0.15	.X	±2°																				
.XX	±0.10	.XX	±1°																				
.XXX	±0.05	.XXX	±0.5°																				
单位 UNITS	MM	制图 DRAWING	YANG	制图料号 PRODUCT PART NO.	920-762A2021D10103																		
比例 SCALE	1:1	审核 CHKD	郭治富	产品名称 PRODUCT NAME	HDMI 19P母座四脚插板																		
日期 DATE	2020-05-22	核准 APPD	黄国荣	角法 VIEW	角法 VIEW	版本 VER																	
						AO																	