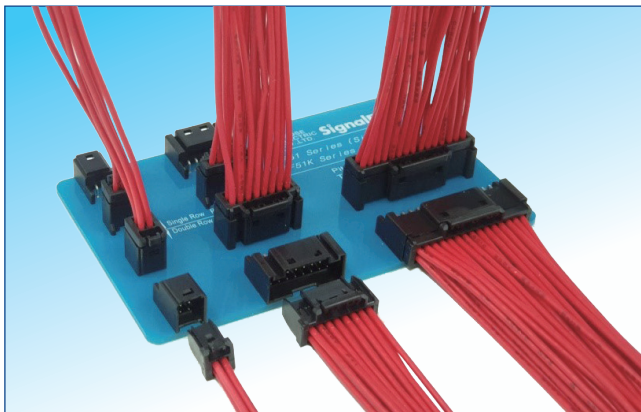


2mm Pitch, Positive lock, Wire-to-Board Connector (UL, C-UL Listed)

DF51K Series



■ Features

1. Positive lock provides clear tactile click and secures reliable connection

The locking mechanism delivers a clear tactile click, which prevents incomplete mating. (Fig.1)

2. Wide variation

Straight and right angle types are available in single row and double row contact arrangements for flexible board design. Gold and Tin plating options support various application needs.

3. Easy Lock Release

The width of the center lock lever increases as the pin count increases for easy extraction. Additionally, the center lock design does not need side-to-side spacing to un-mate the connector, which enables high density mounting. (Fig.2)

4. Prevents incorrect mating

Visually and mechanically polarized design prevents reverse mating and incorrect mating between different number of positions. (Fig.3)

5. Suitable for potting

Capable of being potted up to 3mm. (Fig.3)

6. Uses the same crimp tools as DF11 Series

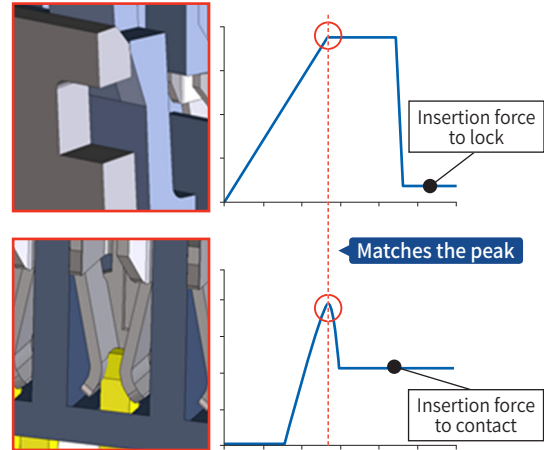
Wide applicable cable range : 22 to 30 AWG.
(However, the crimp contact of DF51K and DF11 are not compatible with each other.)

7. UL, C-UL certified

■ Applications

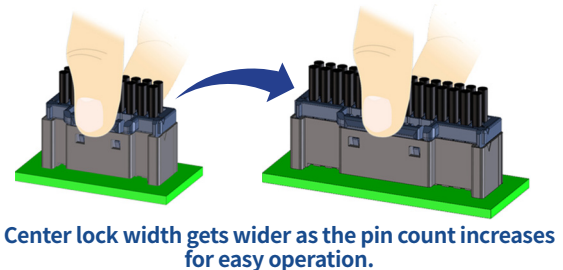
Office equipment, Industrial machinery,
Industrial robots, Amusement equipment,
Medical equipment.

Secure mating with clear tactile click

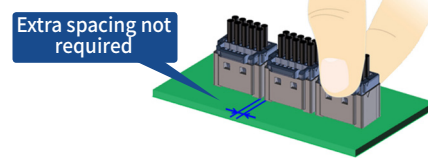


Matching peak insertion forces provides a clear click sound and tactile click

Fig.1



Center lock width gets wider as the pin count increases for easy operation.



High workability and high density mounting due to center lock design

Fig.2

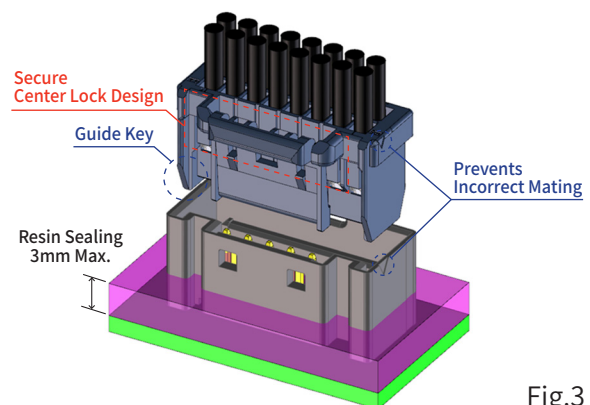


Fig.3

Product Specifications

| | | | | | | | | | | |
|---------------|------------------------|------------|--------------------|--------|--------|--------|--------|------------------------|--------------------------|------------------------|
| Ratings | Rated Current (Note 1) | Single Row | Number of Contacts | 22 AWG | 24 AWG | 26 AWG | 28 AWG | 30 AWG | Operating Temperature | -55 to +105°C (Note 2) |
| | | | 2 | 3A | 2.5A | 2A | 1A | 0.5A | Operating Humidity Range | 20 to 80% (Note 3) |
| | | 3-6 | 2A | 2A | | | | | | |
| | | Double Row | 4 | 3A | 2.5A | | | | | |
| | 6-30 | 2A | 2A | 1.5A | | | | | | |
| Rated Voltage | 250V AC/DC | | | | | | | Storage Humidity Range | 40 to 70% (Note 4) | |

| | | | | |
|---------|------------------------|-----------|--------------|--------|
| Ratings | Rated Current (Note 1) | 22 AWG | 24 to 28 AWG | 30 AWG |
| | | 2A | 1A | 0.5A |
| | Rated Voltage | 30V AC/DC | | |

UL/C-UL File No., and Recognition No.
UL, C-UL : E132750

| Items | Specifications | Conditions |
|------------------------------|--|---|
| 1. Insulation Resistance | No less than 1,000MΩ | Measured at 500V DC |
| 2. Withstanding Voltage | No flashover or breakdown | 650V AC is applied for 1 minute |
| 3. Contact Resistance | No more than 30mΩ | Measured at 1mA and no higher than 20mV |
| 4. Vibration Resistance | No electrical discontinuity of 1μs or greater | Frequency : 10 to 55Hz, half amplitude 0.75mm, 10 times in each of the 3 directions |
| 5. Shock Resistance | No electrical discontinuity of 1μs or greater | Acceleration velocity : 490m/s ² for 11ms, half-sine wave in 3 directions, 3 times for each directions |
| 6. Moisture Resistance | Contact resistance : no more than 30mΩ Insulation resistance : no less than 500MΩ | Temperature : 40 ± 2°C, humidity : 90 to 95%, left as it is for 96 hours |
| 7. Temperature Cycles | Contact resistance : no more than 30mΩ Insulation resistance : no less than 1,000MΩ | -55°C: 30 minutes → 105°C : 30 minutes 5 cycles |
| 8. Mating Durability | Contact resistance: no more than 30mΩ | Tin plated : 30 mating cycles, Gold plated : 50 mating cycles |
| 9. Soldering Heat Resistance | The resin parts should withstand the temperature and resist melting. | Flow : 260°C, 5 sec. Hand soldering : temperature of soldering iron at 270°C for 3 seconds |

Note 1 : The rated current varies based on the cable size used.

Note 2 : Includes temperature rise caused by current flow.

Note 3 : Use without condensation on parts.

Note 4 : The storage condition refers to long-term storage of the product on the shelf before assembly. Please use the operating temperature for temporary storage such as pre-assembly and during shipping.

Material / Finish

| Product | Part | Material | Finish | UL Regulation |
|----------------|-----------|---|---------------------------|---------------|
| Header | Insulator | Straight : PA66 Right Angle : PBT (glass-reinforced) | Black | UL94V-0 |
| | Contact | Brass | Tin Plated or Gold Plated | — |
| Crimp Socket | Insulator | PBT (glass-reinforced) | Black | UL94V-0 |
| Socket Contact | Contact | Phosphor bronze | Tin Plated or Gold Plated | — |

Product Number Structure

Refer to the chart below when determining the product specifications from the product number. Please select from the product numbers listed in this catalog when placing orders.

● Connector

DF51K # - * **P** - **2** **DSA**
 ① ② ③ ④ ⑤ ⑥

● Crimp Contact

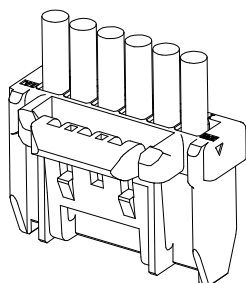
DF51K - **2428** **SCF** **A**
 ① ⑦ ⑧ ⑨

| | |
|--|---|
| ① Series Name : DF51K | ⑥ Type of Housing DSA : Straight header DS : Right angle header C : Crimp socket |
| ② Form Type Blank : Without guide-boss B : Guide-boss type | ⑦ Applicable Conductor 22 : 22 AWG 2428 : 24 to 28 AWG 30 : 30 AWG |
| ③ Number of Contacts Single-row : 2 to 6 Double-row : 4 to 30 | ⑧ Packaging SC : Socket contacts/pack SCF : Socket contacts/reel |
| ④ Connector type P : Single-row pin header S : Single-row crimp socket DP : Double-row pin header DS : Double-row crimp socket | ⑨ Plating Specifications Blank : Tin plated A : Gold plated |
| ⑤ Contact Pitch : 2mm | |

Diagram of Connector Mating Combinations

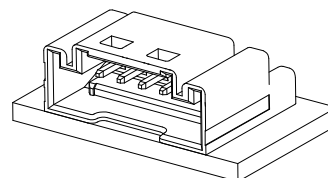
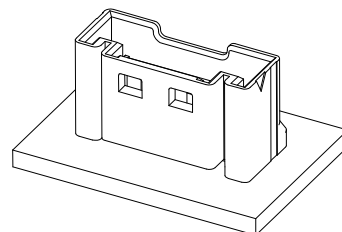
● Single-row

| Crimp Socket | Socket Contact |
|--------------|--------------------|
| DF51K-*S-2C | DF51K-22SC(F)(A) |
| | DF51K-2428SC(F)(A) |
| | DF51K-30SC(F)(A) |



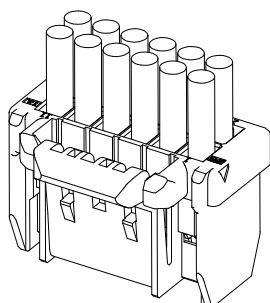
| Straight Header |
|-----------------|
| DF51K-*P-2DSA |

| Right Angle Header |
|--------------------|
| DF51K(B)-*P-2DS |



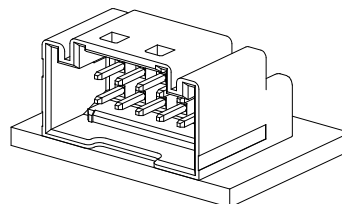
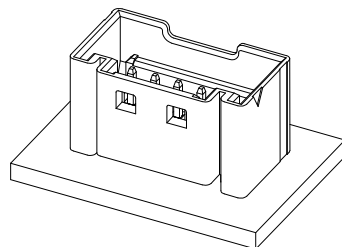
● Double-row

| Crimp Socket | Socket Contact |
|--------------|--------------------|
| DF51K-*DS-2C | DF51K-22SC(F)(A) |
| | DF51K-2428SC(F)(A) |
| | DF51K-30SC(F)(A) |



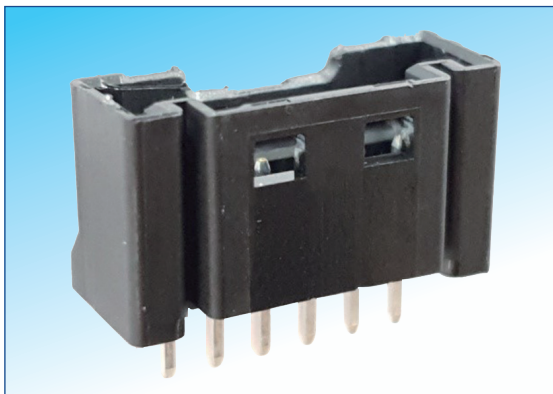
| Straight Header |
|-----------------|
| DF51K-*DP-2DSA |

| Right Angle Header |
|--------------------|
| DF51K(B)-*DP-2DS |

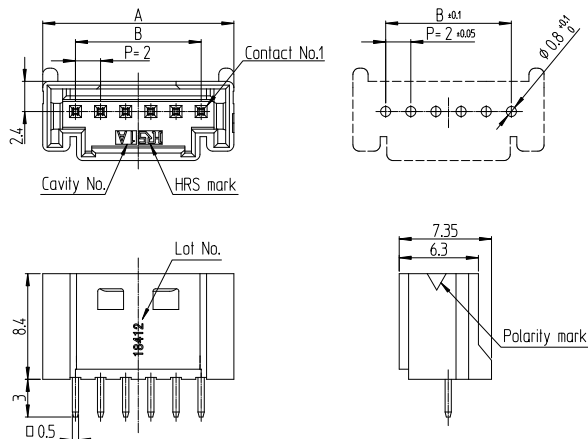


Dec.1.2021 Copyright 2021 HIROSE ELECTRIC CO., LTD. All Rights Reserved.

Single-row Straight Header



Recommended PCB Layout (t=1.6mm)

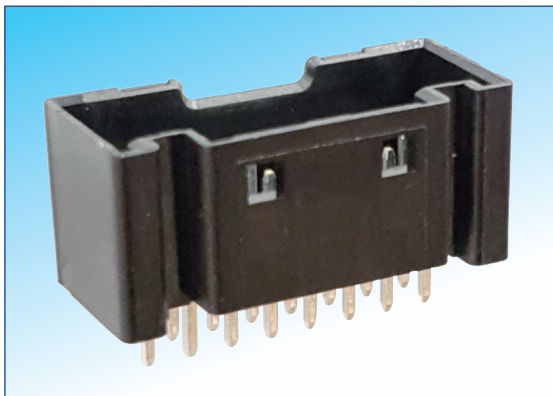


[Specification number] - **, (8**)
 00 : Tin plated
 05 : Gold plated

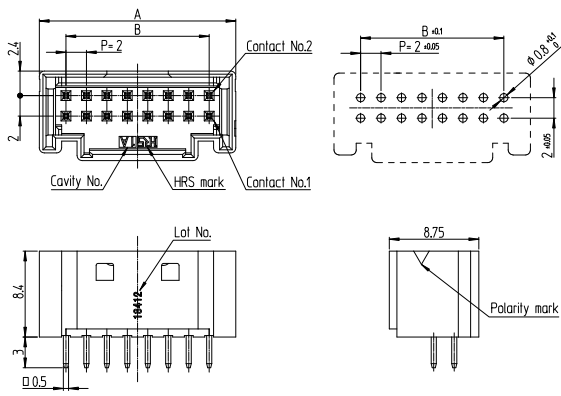
| Part No. | HRS No. | No. of Contacts | A | B |
|--------------------|---------------|-----------------|------|------|
| DF51K-2P-2DSA(8**) | 480-0542-0 ** | 2 | 7.2 | 2.0 |
| DF51K-3P-2DSA(8**) | 480-0543-0 ** | 3 | 9.2 | 4.0 |
| DF51K-4P-2DSA(8**) | 480-0544-0 ** | 4 | 11.2 | 6.0 |
| DF51K-5P-2DSA(8**) | 480-0545-0 ** | 5 | 13.2 | 8.0 |
| DF51K-6P-2DSA(8**) | 480-0546-0 ** | 6 | 15.2 | 10.0 |

Note : The sales unit is one pack(100pcs/pack). Order by number of packs.

Double-row Straight Header



Recommended PCB Layout (t=1.6mm)



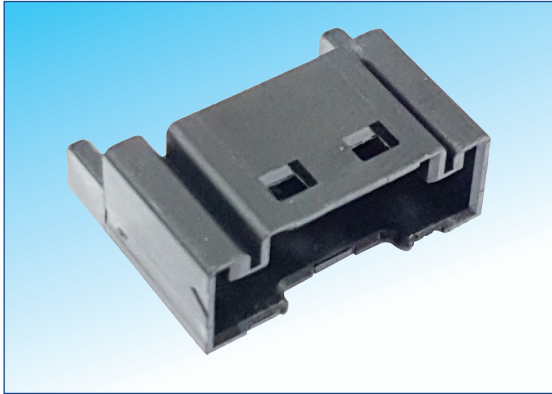
[Specification number] - **, (8**)
 00 : Tin plated
 05 : Gold plated

| Part No. | HRS No. | No. of Contacts | A | B |
|----------------------|---------------|-----------------|------|------|
| DF51K-4DP-2DSA(8**) | 480-0547-0 ** | 4 | 7.2 | 2.0 |
| DF51K-6DP-2DSA(8**) | 480-0548-0 ** | 6 | 9.2 | 4.0 |
| DF51K-8DP-2DSA(8**) | 480-0549-0 ** | 8 | 11.2 | 6.0 |
| DF51K-10DP-2DSA(8**) | 480-0550-0 ** | 10 | 13.2 | 8.0 |
| DF51K-12DP-2DSA(8**) | 480-0551-0 ** | 12 | 15.2 | 10.0 |
| DF51K-14DP-2DSA(8**) | 480-0552-0 ** | 14 | 17.2 | 12.0 |
| DF51K-16DP-2DSA(8**) | 480-0553-0 ** | 16 | 19.2 | 14.0 |

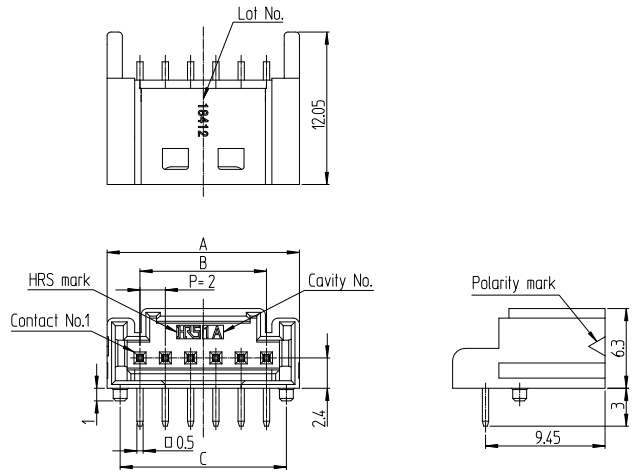
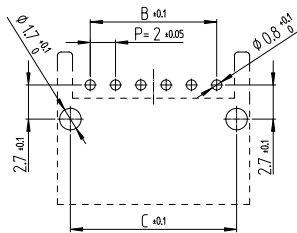
| Part No. | HRS No. | No. of Contacts | A | B |
|----------------------|---------------|-----------------|------|------|
| DF51K-18DP-2DSA(8**) | 480-0554-0 ** | 18 | 21.2 | 16.0 |
| DF51K-20DP-2DSA(8**) | 480-0555-0 ** | 20 | 23.2 | 18.0 |
| DF51K-22DP-2DSA(8**) | 480-0556-0 ** | 22 | 25.2 | 20.0 |
| DF51K-24DP-2DSA(8**) | 480-0557-0 ** | 24 | 27.2 | 22.0 |
| DF51K-26DP-2DSA(8**) | 480-0558-0 ** | 26 | 29.2 | 24.0 |
| DF51K-28DP-2DSA(8**) | 480-0559-0 ** | 28 | 31.2 | 26.0 |
| DF51K-30DP-2DSA(8**) | 480-0560-0 ** | 30 | 33.2 | 28.0 |

Note : The sales unit is one pack (100pcs/pack). Order by number of packs.

Single-row Right Angle Header



Recommended PCB Layout (t=1.6mm)



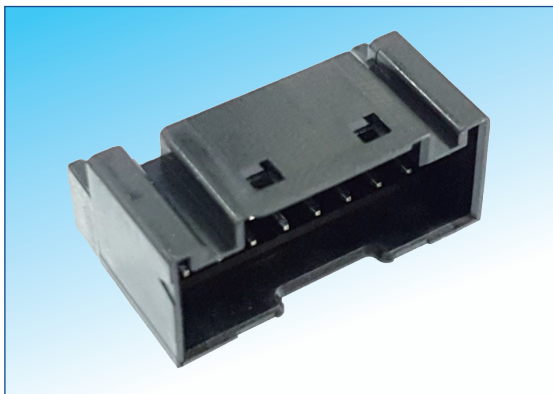
*The above drawing is of guide-boss type.

[Specification number] - **, (8**)
 00 : Tin plated, tray packaging
 05 : Gold plated, tray packaging

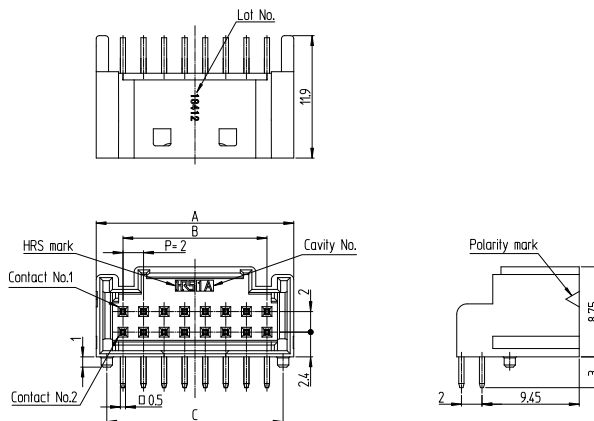
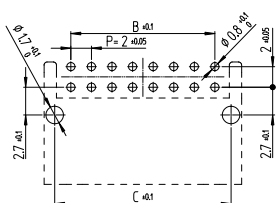
| Part No. | HRS No. | Guide-Boss | No. of Contacts | A | B | C | Quantity per Package |
|--------------------|---------------|--------------|-----------------|------|------|------|----------------------|
| DF51KB-2P-2DS(8**) | 480-0587-0 ** | With boss | 2 | 7.2 | 2.0 | 5.14 | 420 |
| DF51KB-3P-2DS(8**) | 480-0588-0 ** | With boss | 3 | 9.2 | 4.0 | 7.14 | 330 |
| DF51K-4P-2DS(8**) | 480-0589-0 ** | Without boss | 4 | 11.2 | 6.0 | — | 270 |
| DF51K-5P-2DS(8**) | 480-0590-0 ** | Without boss | 5 | 13.2 | 8.0 | — | 230 |
| DF51K-6P-2DS(8**) | 480-0591-0 ** | Without boss | 6 | 15.2 | 10.0 | — | 200 |

Note : The sales unit is one tray. Order by number of trays.

Double-row Right Angle Header



Recommended PCB Layout (t=1.6mm)



*The above drawing is of guide-boss type.

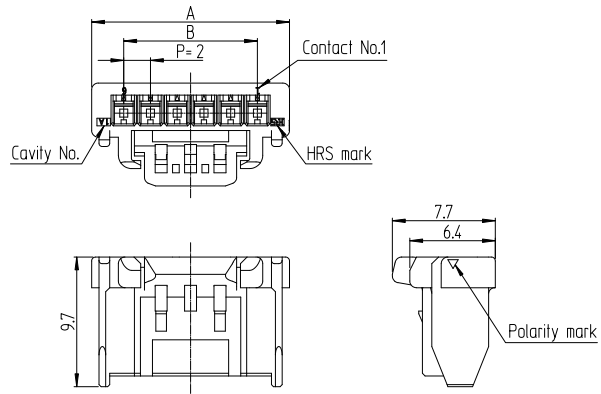
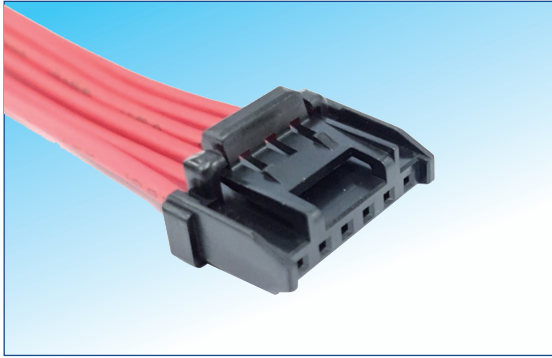
[Specification number] - **, (8**)
 00 : Tin plated, tray packaging
 05 : Gold plated, tray packaging

| Part No. | HRS No. | Guide-Boss | No. of Contacts | A | B | C | Quantity per Package |
|---------------------|---------------|--------------|-----------------|------|------|------|----------------------|
| DF51KB-4DP-2DS(8**) | 480-0592-0 ** | With boss | 4 | 7.2 | 2.0 | 5.14 | 420 |
| DF51KB-6DP-2DS(8**) | 480-0593-0 ** | With boss | 6 | 9.2 | 4.0 | 7.14 | 330 |
| DF51K-8DP-2DS(8**) | 480-0594-0 ** | Without boss | 8 | 11.2 | 6.0 | — | 270 |
| DF51K-10DP-2DS(8**) | 480-0595-0 ** | Without boss | 10 | 13.2 | 8.0 | — | 230 |
| DF51K-12DP-2DS(8**) | 480-0596-0 ** | Without boss | 12 | 15.2 | 10.0 | — | 200 |
| DF51K-14DP-2DS(8**) | 480-0597-0 ** | Without boss | 14 | 17.2 | 12.0 | — | 170 |
| DF51K-16DP-2DS(8**) | 480-0598-0 ** | Without boss | 16 | 19.2 | 14.0 | — | 150 |
| DF51K-18DP-2DS(8**) | 480-0599-0 ** | Without boss | 18 | 21.2 | 16.0 | — | 140 |
| DF51K-20DP-2DS(8**) | 480-0600-0 ** | Without boss | 20 | 23.2 | 18.0 | — | 130 |
| DF51K-22DP-2DS(8**) | 480-0601-0 ** | Without boss | 22 | 25.2 | 20.0 | — | 120 |
| DF51K-24DP-2DS(8**) | 480-0602-0 ** | Without boss | 24 | 27.2 | 22.0 | — | 110 |
| DF51K-26DP-2DS(8**) | 480-0603-0 ** | Without boss | 26 | 29.2 | 24.0 | — | 100 |
| DF51K-28DP-2DS(8**) | 480-0604-0 ** | Without boss | 28 | 31.2 | 26.0 | — | 90 |
| DF51K-30DP-2DS(8**) | 480-0605-0 ** | Without boss | 30 | 33.2 | 28.0 | — | 90 |

Note : The sales unit is one tray. Order by number of trays.

■ Crimp Socket

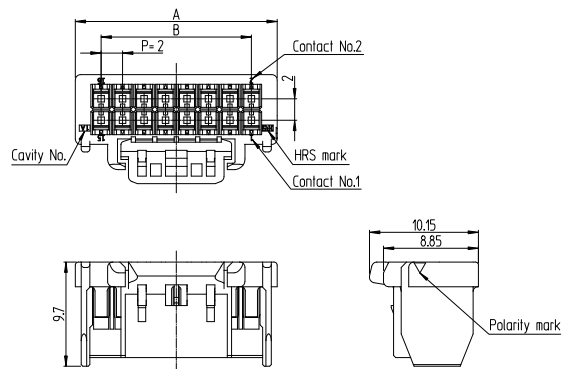
● Single-row



| Part No. | HRS No. | No. of Contacts | A | B |
|------------------|---------------|-----------------|------|------|
| DF51K-2S-2C(800) | 480-0561-0 00 | 2 | 6.8 | 2.0 |
| DF51K-3S-2C(800) | 480-0562-0 00 | 3 | 8.8 | 4.0 |
| DF51K-4S-2C(800) | 480-0563-0 00 | 4 | 10.8 | 6.0 |
| DF51K-5S-2C(800) | 480-0564-0 00 | 5 | 12.8 | 8.0 |
| DF51K-6S-2C(800) | 480-0565-0 00 | 6 | 14.8 | 10.0 |

Note : The sales unit is one pack (100pcs/pack). Order by number of packs.

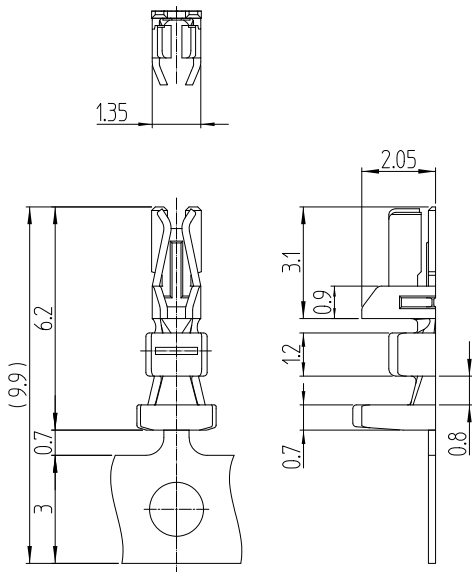
● Double-row



| Part No. | HRS No. | No. of Contacts | A | B |
|--------------------|---------------|-----------------|------|------|
| DF51K-4DS-2C(800) | 480-0567-0 00 | 4 | 6.8 | 2.0 |
| DF51K-6DS-2C(800) | 480-0568-0 00 | 6 | 8.8 | 4.0 |
| DF51K-8DS-2C(800) | 480-0569-0 00 | 8 | 10.8 | 6.0 |
| DF51K-10DS-2C(800) | 480-0570-0 00 | 10 | 12.8 | 8.0 |
| DF51K-12DS-2C(800) | 480-0571-0 00 | 12 | 14.8 | 10.0 |
| DF51K-14DS-2C(800) | 480-0572-0 00 | 14 | 16.8 | 12.0 |
| DF51K-16DS-2C(800) | 480-0573-0 00 | 16 | 18.8 | 14.0 |
| DF51K-18DS-2C(800) | 480-0574-0 00 | 18 | 20.8 | 16.0 |
| DF51K-20DS-2C(800) | 480-0575-0 00 | 20 | 22.8 | 18.0 |
| DF51K-22DS-2C(800) | 480-0576-0 00 | 22 | 24.8 | 20.0 |
| DF51K-24DS-2C(800) | 480-0577-0 00 | 24 | 26.8 | 22.0 |
| DF51K-26DS-2C(800) | 480-0578-0 00 | 26 | 28.8 | 24.0 |
| DF51K-28DS-2C(800) | 480-0579-0 00 | 28 | 30.8 | 26.0 |
| DF51K-30DS-2C(800) | 480-0580-0 00 | 30 | 32.8 | 28.0 |

Note : The sales unit is one pack (100pcs/pack). Order by number of packs.

■ Socket Contact



| Part No. | HRS No. | Packaging | Finish |
|---------------------|---------------|-------------|-------------|
| DF51K-22SCF(800) | 480-0581-0 00 | 10,000/reel | Tin plated |
| DF51K-22SC(800) | 480-0582-0 00 | 100/pack | |
| DF51K-2428SCF(800) | 480-0583-0 00 | 10,000/reel | |
| DF51K-2428SC(800) | 480-0584-0 00 | 100/pack | |
| DF51K-30SCF(800) | 480-0585-0 00 | 10,000/reel | |
| DF51K-30SC(800) | 480-0586-0 00 | 100/pack | |
| DF51K-22SCFA(800) | 480-0612-0 00 | 10,000/reel | Gold plated |
| DF51K-22SCA(800) | 480-0613-0 00 | 100/pack | |
| DF51K-2428SCFA(800) | 480-0614-0 00 | 10,000/reel | |
| DF51K-2428SCA(800) | 480-0615-0 00 | 100/pack | |
| DF51K-30SCFA(800) | 480-0616-0 00 | 10,000/reel | |
| DF51K-30SCA(800) | 480-0617-0 00 | 100/pack | |

● Applicable wire (Tinned, Annealed copper wire)

| UL | Wire Size (Stranded Wire Structure) | Jacket Diameter |
|------|-------------------------------------|-----------------|
| 1061 | 22 AWG (17 pieces / 0.16mm) | Ø1.2 to Ø1.45mm |
| 1007 | 24 AWG (11 pieces / 0.16mm) | Ø0.9 to Ø1.45mm |
| | 26 AWG (7 pieces / 0.16mm) | |
| | 28 AWG (7 pieces / 0.127mm) | |
| 1061 | 30 AWG (7 pieces / 0.1mm) | Ø0.8mm |

Note 1 : Applicable Tool : Applicator

Note 2 : Contact your Hirose representative when considering usage of non-applicable wires.

◆ Applicable Crimping Tool

| Type | Part No. | HRS No. | Wire Type | Applicable Contacts |
|-------------------------|---------------------|---------------|-----------------------|---------------------|
| Applicator | AP105-DF11-22S | 901-4529-7 00 | UL1061 (22 AWG) | DF51K-22SCF/SCFA |
| | AP105-DF11-2428S | 901-4511-1 00 | UL1007 (24 to 28 AWG) | DF51K-2428SCF/SCFA |
| | AP105-DF11-30S | 901-4532-1 00 | UL1061 (30 AWG) | DF51K-30SCF/SCFA |
| Press Unit | CM-105C | 901-0001-0 00 | | |
| Hand Tool | HT801/DF11-22S(A) | 550-0407-5 00 | UL1061 (22 AWG) | DF51K-22SC/SCA |
| | HT801/DF11-2428S(A) | 550-0403-4 00 | UL1007 (24 to 28 AWG) | DF51K-2428SC/SCA |
| | HT801/DF11-30S(A) | 550-0408-8 00 | UL1061 (30 AWG) | DF51K-30SC/SCA |
| Contact Extraction Tool | DF-C-PO(B) | 550-0179-2 00 | | DF51K-****SCF/SCFA |

Note 3 : Please conduct crimping work according to the "Crimping work standards" and "Crimping condition table".

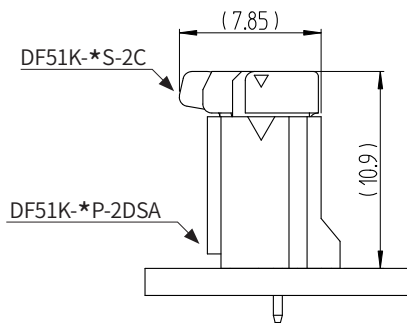
Note 4 : Any problems that occur from using tools other than those specified by Hirose are not covered by warranty.

Note 5 : Please contact Hirose for information about hand tooling.

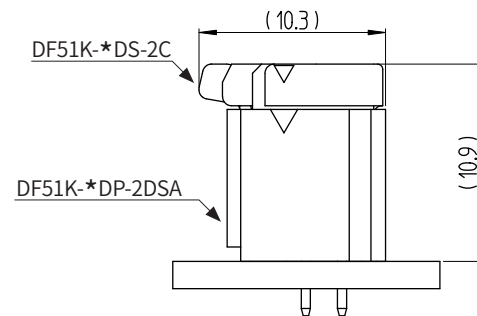
◆ Mated Dimensions

● Wire-to-Board connection using the straight header

[Single-row]

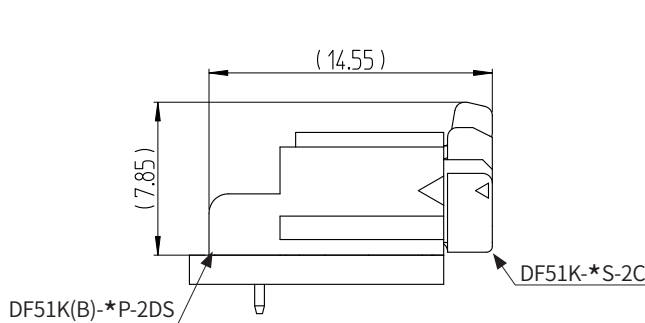


[Double-row]

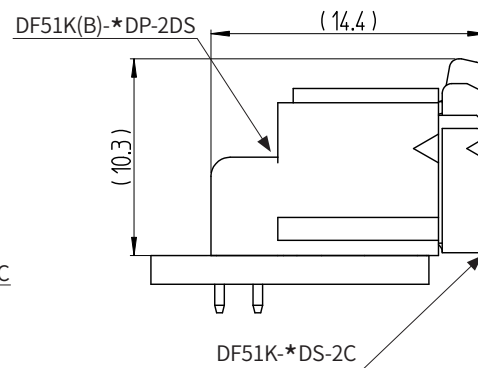


● Wire-to-Board connection using the right angle header

[Single-row]



[Double-row]



◆ Precautions for use

1. The connector could be damaged if pulled out forcibly. When it is hard to pull out, push it in slightly first and then depress the lock and un-mate.
Please refer to "DF51K mating and unmating Procedure Document (DOC180208-010)" for points in handling regarding mating operations.
2. When mating a crimped contact into a socket, please refrain from inserting it diagonally in order to maintain performance reliability.
Please refer to the "Harness procedure manual (DOC180330-002)" for points in harness operations.

◆ Operating Environment

Please contact a Hirose representative if you are designing this connector into environmental conditions where high and low temperatures are repeated.

◆ While taking in consideration

Specifications mentioned in this catalog are reference values.

When considering to order or use this product, please confirm the "Drawing" and "Product Specifications" sheets.

Use an appropriate cable when using the connector in combination with cables.

If considering usage of a non-specified cable, please contact your sales representative.

If assembly process is done by jigs & tools which are not identified by Hirose assurance will not be given.

If considering usage for below mentioned applications, please contact your sales representative.

In cases where the application will demand a high level of reliability, such as automotive, medical instruments, public infrastructure, aerospace/ defense etc. Hirose must review before assurance of reliability can be given.

MEMO

Dec.1.2021 Copyright 2021 HIROSE ELECTRIC CO., LTD. All Rights Reserved.

[JAPAN]

Headquarters

HIROSE ELECTRIC CO., LTD.

Phone : +81-45-620-7410
http://www.hirose.com

[U.S.A]

US Headquarters / CHICAGO Office

HIROSE ELECTRIC (U.S.A.), INC.

Phone : +1-630-282-6700
http://www.hirose.com/us/

SAN JOSE Office

HIROSE ELECTRIC (U.S.A.), INC.

Phone : +1-408-253-9640
http://www.hirose.com/us/

DETROIT Office (AUTOMOTIVE)

HIROSE ELECTRIC (U.S.A.), INC.

Phone : +1-734-542-9963
http://www.hirose.com/us/

BOSTON Office

HIROSE ELECTRIC (U.S.A.), INC.

Phone : +1-978-655-9850
http://www.hirose.com/us/

DALLAS Office

HIROSE ELECTRIC (U.S.A.), INC.

Phone : +1-972-324-3370
http://www.hirose.com/us/

IRVINE Office

HIROSE ELECTRIC (U.S.A.), INC.

Phone : +1-949-930-3750
http://www.hirose.com/us/

[THE NETHERLANDS]

EU Headquarters / AMSTERDAM OFFICE

HIROSE ELECTRIC EUROPE B.V.

Phone : +31-20-6557460
http://www.hirose.com/eu/

[UNITED KINGDOM]

UK Branch

HIROSE ELECTRIC EUROPE B.V.

Phone : +44-1908-202050
http://www.hirose.com/eu/

[GERMANY]

GERMAN Branch / STUTTGART Office

HIROSE ELECTRIC EUROPE B.V.

Phone : +49-711-456002-1
http://www.hirose.com/eu/

NUREMBERG Office

HIROSE ELECTRIC EUROPE B.V.

Phone : +49-911-326889-63
http://www.hirose.com/eu/

HANOVER Office

HIROSE ELECTRIC EUROPE B.V.

Phone : +49-511-978261-30
http://www.hirose.com/eu/

[FRANCE]

PARIS Office

HIROSE ELECTRIC EUROPE B.V.

Phone : +33-1-85764886
http://www.hirose.com/eu/

[ITALY]

MILAN Office

HIROSE ELECTRIC EUROPE B.V.

Phone : +39-02-36636350
http://www.hirose.com/eu/

[CHINA]

CHINA Headquarters / SHANGHAI Branch

HIROSE ELECTRIC (CHINA) CO., LTD.

Phone : +86-21-6391-3355
http://www.hirose.com/cn/

SHENZHEN Branch

HIROSE ELECTRIC (CHINA) CO., LTD.

Phone : +86-755-8207-0851
http://www.hirose.com/cn/

BEIJING Branch

HIROSE ELECTRIC (CHINA) CO.,LTD.

Phone : +86-10-5165-9332
http://www.hirose.com/cn/

GUANGZHOU Branch

HIROSE ELECTRIC (CHINA) CO.,LTD.

Phone : +86-180-9895-1861
http://www.hirose.com/cn/

[HONG KONG]

HONG KONG Office

**HIROSE ELECTRIC
HONGKONG TRADING CO., LTD.**

Phone : +852-2803-5338
http://www.hirose.com/hk/

[TAIWAN]

TAIWAN Office

HIROSE ELECTRIC (TAIWAN) CO., LTD.

Phone : +886-2-2555-7377
http://www.hirose.com/tw/

[KOREA]

KOREA Office

HIROSE KOREA CO.,LTD.

Phone : +82-31-496-7000
http://www.hirose.co.kr/

[SINGAPORE]

SINGAPORE Office

HIROSE ELECTRIC SINGAPORE PTE. LTD.

Phone : +65-6324-6113
http://www.hirose.com/sg/

[THAILAND]

BANGKOK Liaison Office

HIROSE ELECTRIC SINGAPORE PTE. LTD.

Phone : +66-2-686-1255
http://www.hirose.com/sg/

[MALAYSIA]

PENANG Representative Office

HIROSE ELECTRIC SINGAPORE PTE. LTD.

Phone : +60-4-648-5536
http://www.hirose.com/sg/

[INDIA]

BANGALORE Office

HIROSE ELECTRIC INDIA PVT. LTD.

Phone : +91-80-4120-1907
http://www.hirose.com/sg/

DELHI Office

HIROSE ELECTRIC INDIA PVT. LTD.

Phone : +91-120-660-8018
http://www.hirose.com/sg/

HIROSE ELECTRIC CO.,LTD.

2-6-3,Nakagawa Chuoh,Tsuzuki-Ku,Yokohama-Shi 224-8540,JAPAN