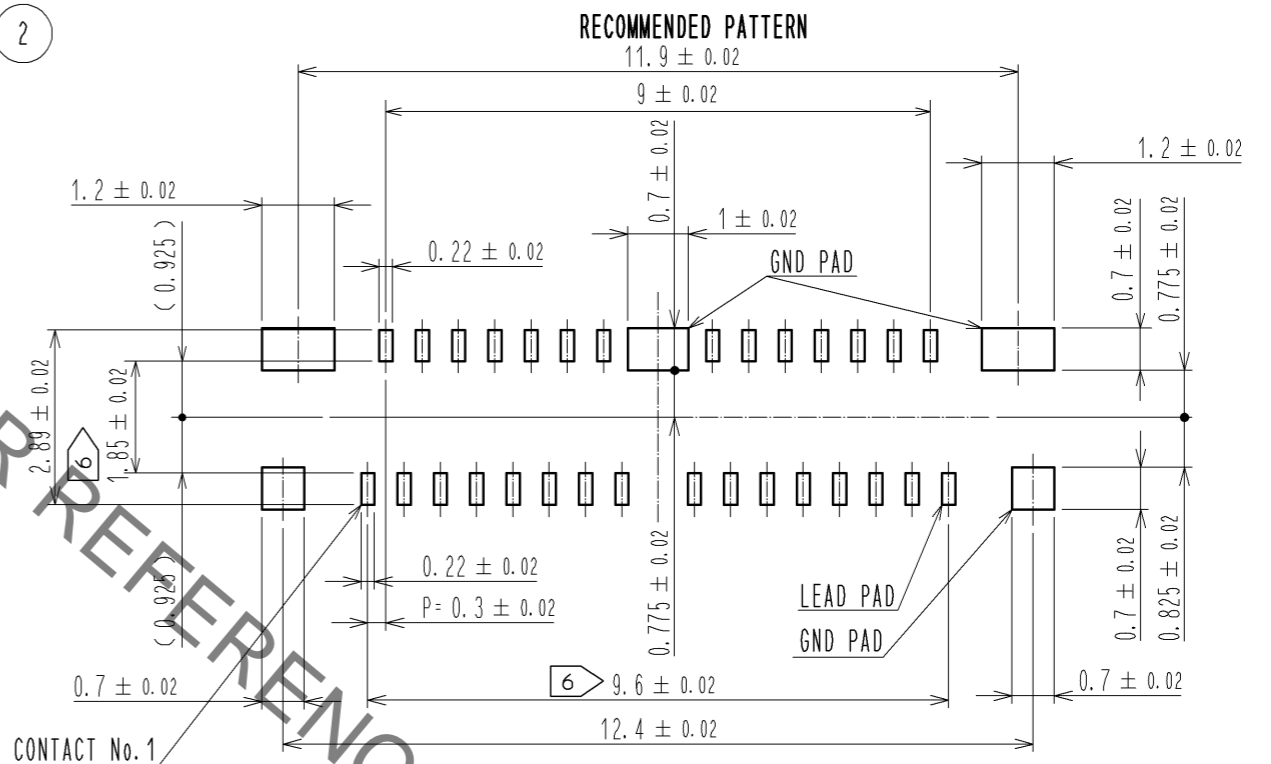
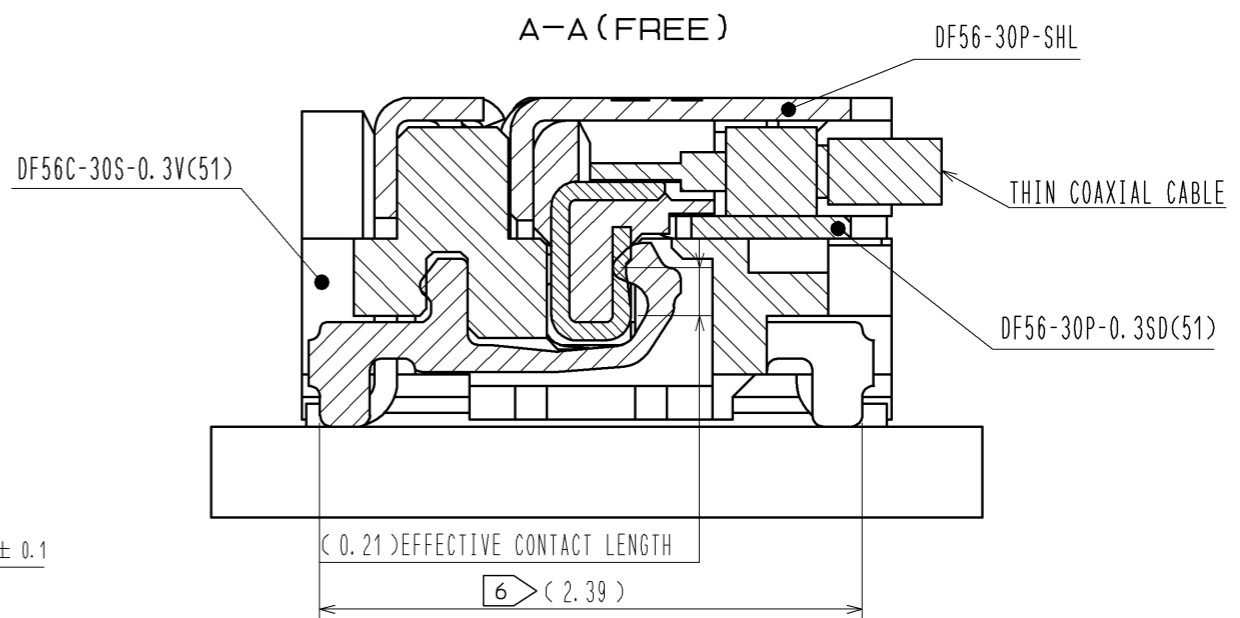
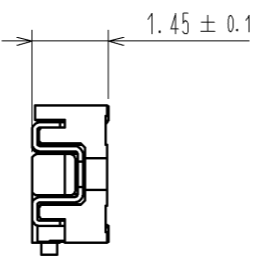
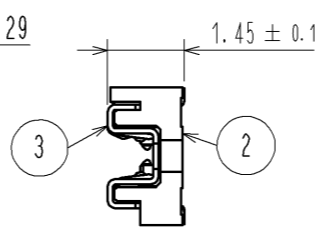
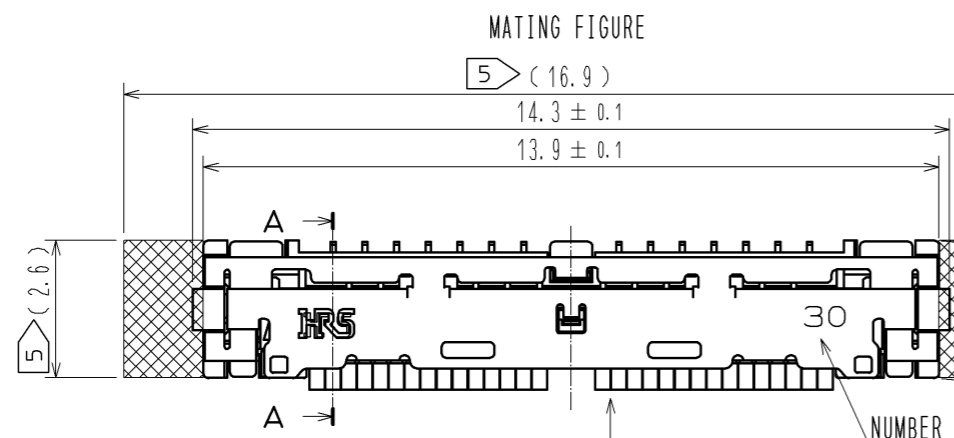
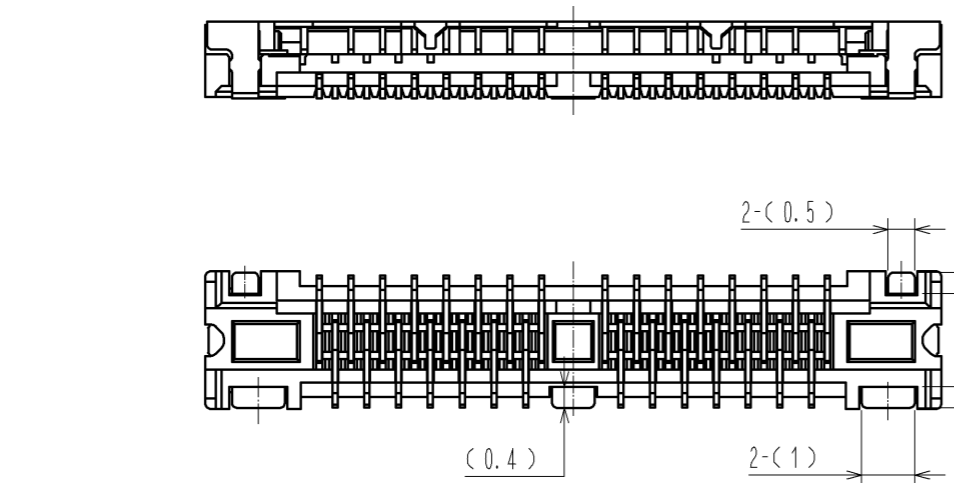
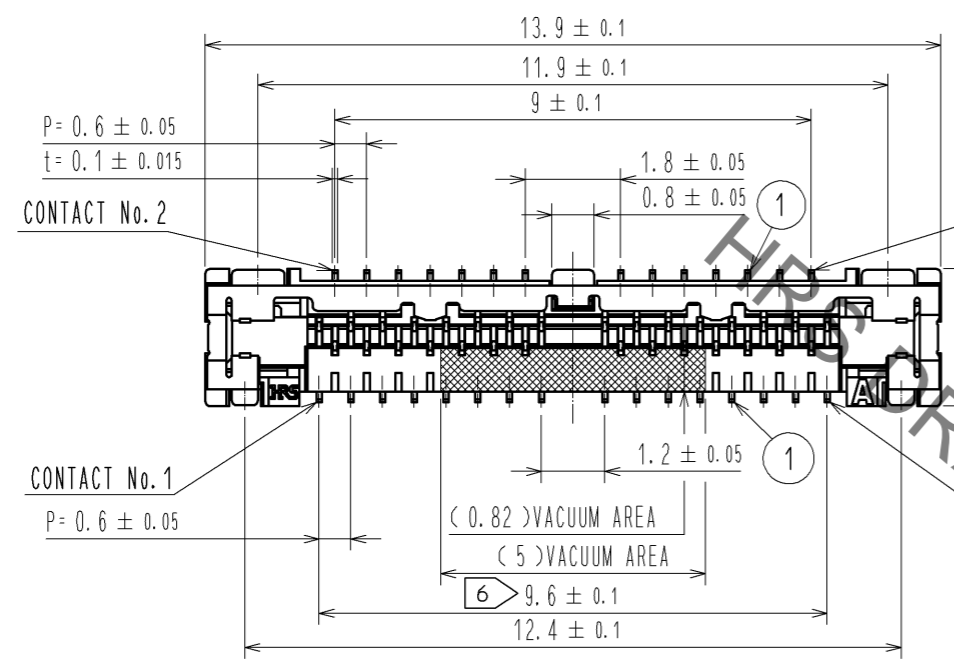


Dec.1.2022 Copyright 2022 HIROSE ELECTRIC CO., LTD. All Rights Reserved.
In case of consideration for using Automotive equipment / device which demand high reliability, kindly contact our sales window correspondents.



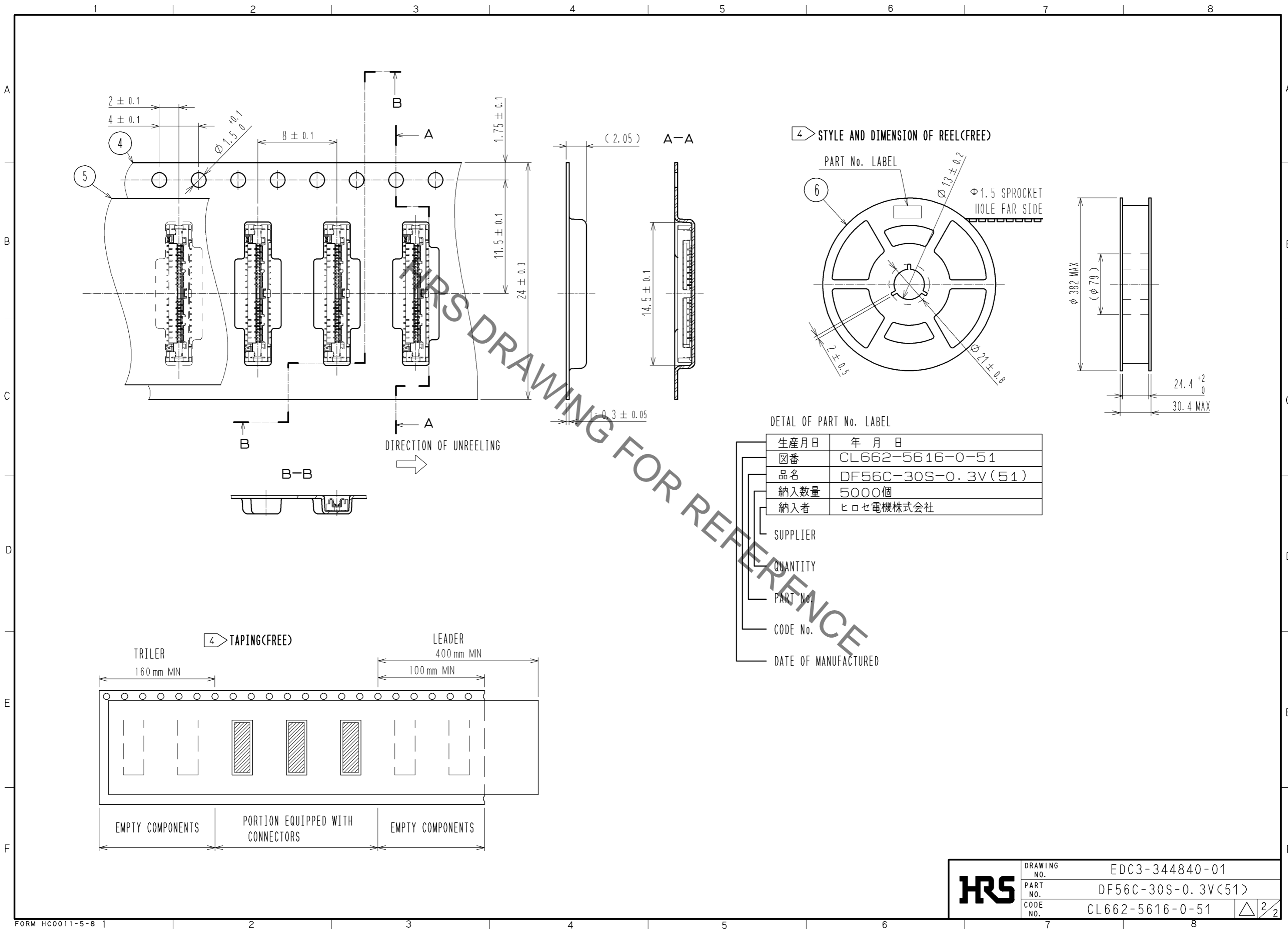
- NOTES 1. LEAD CO-PLANARITY SHALL BE 0.1mmMAX.
 2. PER REEL : 5000 COMPONENTS.
 3. THE DIMENSIONS IN PARENTHESES ARE FOR REFERENCE.
 4 REFER TO JIS 0806. (PACKING OF COMPONENTS FOR AUTO HANDRING)
 5 DO NOT MOUNT ANY OTHER COMPONENTS TO THE INDICATED AREA WHEN USING OUR RECOMMENDED TOOL.
 6 LOCATION OF THE CONNECTOR AND RECOMMENDED PCB LAYOUT ARE ALIGNED WITH THOSE CENTERS.

RECOMMENDED METAL MASK
 THICKNESS 0.1mm
 OPENING RATIO 100% (LEAD PAD)
 100% (GND PAD)

| | | | | | |
|---|-----------------|---|---|-----------------|---|
| 2 | LCP | UL94V-0, BLACK | 6 | PS | BLACK |
| 1 | PHOSPHOR BRONZE | CONTACT AREA : Au PLATING 0.1μmMIN LEAD AREA : Au PLATING 0.05μmMIN UNDER PLATING : Ni PLATING 1μmMIN | 5 | POLYESTER | CLEAR |
| | | | 4 | PS | CLEAR |
| | | | 3 | PHOSPHOR BRONZE | WHOLE AREA : Sn PLATING 1μmMIN UNDER PLATING:Cu PLATING 0.3μmMIN |

| NO. | MATERIAL | FINISH | REMARKS | NO. | MATERIAL | FINISH | REMARKS | |
|--------------------------|----------|----------|---------|-------------|--------------------------|--------------------|---------|------|
| UNITS | mm | SCALE | FREE | COUNT | DESCRIPTION OF REVISIONS | DESIGNED | CHECKED | DATE |
| APPROVED : TS. SAKATA | | 12.06.12 | | DRAWING NO. | | EDC3-344840-01 | | |
| CHECKED : HS. OZAWA | | 12.06.12 | | PART NO. | | DF56C-30S-0.3V(51) | | |
| DESIGNED : TP. MATSUMOTO | | 12.06.12 | | CODE NO. | | CL662-5616-0-51 | | |
| DRAWN : TP. MATSUMOTO | | 12.06.12 | | | | | | |

Dec.1.2022 Copyright 2022 HIROSE ELECTRIC CO., LTD. All Rights Reserved.
 In case of consideration for using Automotive equipment / device which demand high reliability, kindly contact our sales window correspondents.



| | | |
|------------|-------------|--------------------|
| HRS | DRAWING NO. | EDC3-344840-01 |
| | PART NO. | DF56C-30S-0.3V(51) |
| | CODE NO. | CL662-5616-0-51 |
| | | △ 2/2 |