

產品編碼 P/N	PSPCAQ32~105 series	測試設備 TEST INSTRUMENT	Chroma: 3302 16502
產品系列 Series	贴片非屏蔽功率电感	測試頻率 TEST FREQUENCY	100KHZ / 0.25V

客戶名稱
Customer :

客戶編碼
Customer P/N :

產品系列
Series : 贴片非屏蔽功率电感
SMD unshielded Power Inductor

產品編碼
Supply P/N : PSPCAQ32~105 series

發版號
Version : A3.0

承認日期
Endorsement Date : 2022-9-17

備註
Note :

譜羅德電子科技（深圳）有限公司 PuLuoDe Electronic Technology (Shenzhen) Co. LTD	
製作 APPROVED	Ben
審查 CHECKED	Yuki
確認 PREPARED	Peter

客戶承認

Customer Approval

客戶簽章



產品編碼 P/N	PSPCAQ32~105 series	測試設備 TEST INSTRUMENT	Chroma: 3302 16502
產品系列 Series	贴片非屏蔽功率电感	測試頻率 TEST FREQUENCY	100KHZ / 0.25V

产品特点

Features

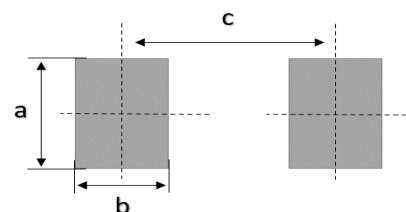
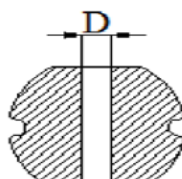
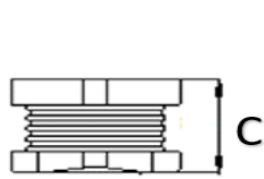
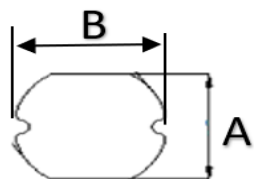
- ☐ SMD结构便于SMT自动贴片
SMD structure is convenient for SMT automatic placement
- ☐ 封装尺寸丰富，电感量范围广
Multiple sizes and wide inductance range
- ☐ 成本低，应用范围广
Low cost and wide range of applications
- ☐ 超小超薄的结构减少PCB的占用面积
Takes up less PCB real estate and save more power



編碼解釋

Code interpretation

P S P C A Q	3 2	1 R 0	-	M
類別碼	尺寸系列	系列碼		公差
Category code	Dimension	Inductance		Tolerance

封装尺寸 (mm)
Dimension推薦的焊盤尺寸
Recommaned Land Pattern

系列 Series	封装尺寸 Dimension				焊盤尺寸 Land Pattern			最小包裝 MPQ
	A	B	C	D	a	b	c	
CD32	3.0±0.3	3.5±0.3	2.1±0.3	1.0 Ref	3.1	1.3	2.3	3000pcs/卷盤
CD43	4.0±0.3	4.5±0.3	3.2±0.3	1.2 Ref	4.5	1.9	3.1	2000pcs/卷盤
CD53	5.2±0.3	5.8±0.3	3.0±0.3	2.0 Ref	5.5	2.4	4.1	2000pcs/卷盤
CD54	5.2±0.3	5.8±0.3	4.5±0.3	2.0 Ref	5.5	2.4	4.1	1500pcs/卷盤
CD75	7.0±0.3	7.8±0.3	5.0±0.3	2.1 Ref	7.5	3	5.6	1000pcs/卷盤
CD105	9.0±0.3	10.0±0.3	5.4±0.3	2.5 Ref	9.5	3.8	6.8	1000pcs/卷盤



產品編碼 P/N	PSPCAQ32~105 series	測試設備 TEST INSTRUMENT	Chroma: 3302 16502
產品系列 Series	贴片非屏蔽功率电感	測試頻率 TEST FREQUENCY	100KHZ / 0.25V

CD32 Series

產品編碼 P/N	@ 25 °C Ambient Temperture				
	感值	公差	DCR	溫升電流 (IRMS)	飽和電流 (ISAT)
	Inductance	Tolerance	Ω	mA	mA
	μH	\pm	Max	$\Delta T \approx 40^\circ\text{C}$	L0 drop $\approx 20\%$
PSPCAQ32-1R0M	1.0	20%	0.045	2200	2200
PSPCAQ32-1R2M	1.2	20%	0.05	2100	2100
PSPCAQ32-1R5M	1.5	20%	0.06	1700	1700
PSPCAQ32-1R8M	1.8	20%	0.07	1650	1650
PSPCAQ32-2R2M	2.2	20%	0.085	1600	1600
PSPCAQ32-2R7M	2.7	20%	0.1	1400	1400
PSPCAQ32-3R3M	3.3	20%	0.12	1050	1050
PSPCAQ32-3R9M	3.9	20%	0.125	1000	1000
PSPCAQ32-4R7M	4.7	20%	0.145	1000	1000
PSPCAQ32-5R6M	5.6	20%	0.16	950	950
PSPCAQ32-6R8M	6.8	20%	0.2	950	950
PSPCAQ32-8R2M	8.2	20%	0.3	920	920
PSPCAQ32-100M	10	20%	0.33	900	900
PSPCAQ32-120M	12	20%	0.35	850	850
PSPCAQ32-150M	15	20%	0.5	750	750
PSPCAQ32-180M	18	20%	0.55	700	700
PSPCAQ32-220M	22	20%	0.66	600	600
PSPCAQ32-270M	27	20%	0.76	550	550
PSPCAQ32-330M	33	20%	0.96	500	500
PSPCAQ32-390M	39	20%	1.1	480	480
PSPCAQ32-470M	47	20%	1.6	450	450
PSPCAQ32-560M	56	20%	1.8	300	300
PSPCAQ32-680M	68	20%	2.0	260	260
PSPCAQ32-820M	82	20%	2.2	230	230
PSPCAQ32-101M	100	20%	3.0	200	200
PSPCAQ32-121M	120	20%	3.2	180	180
PSPCAQ32-151M	150	20%	4.2	160	160
PSPCAQ32-181M	180	20%	5.11	150	150
PSPCAQ32-221M	220	20%	7.31	140	140
PSPCAQ32-271M	270	20%	8.5	100	100
PSPCAQ32-331M	330	20%	10.2	90	90



產品編碼 P/N	PSPCAQ32~105 series	測試設備 TEST INSTRUMENT	Chroma: 3302 16502
產品系列 Series	贴片非屏蔽功率电感	測試頻率 TEST FREQUENCY	100KHZ / 0.25V

CD43 Series

產品編碼 P/N	@ 25 °C Ambient Temperture				
	感值	公差	DCR	溫升電流 (IRMS)	飽和電流 (ISAT)
	Inductance	Tolerance	Ω	mA	mA
	μH	\pm	Max	$\Delta T \approx 40^\circ\text{C}$	L0 drop $\approx 20\%$
PSPCAQ43-1R0M	1.0	20%	0.033	4000	4000
PSPCAQ43-1R5M	1.5	20%	0.038	3900	3900
PSPCAQ43-1R8M	1.8	20%	0.042	3600	3600
PSPCAQ43-2R2M	2.2	20%	0.047	3200	3200
PSPCAQ43-2R7M	2.7	20%	0.052	3000	3000
PSPCAQ43-3R3M	3.3	20%	0.058	2800	2800
PSPCAQ43-3R9M	3.9	20%	0.076	2500	2500
PSPCAQ43-4R7M	4.7	20%	0.094	2100	2100
PSPCAQ43-5R6M	5.6	20%	0.101	2000	2000
PSPCAQ43-6R8M	6.8	20%	0.117	1900	1900
PSPCAQ43-8R2M	8.2	20%	0.132	1700	1700
PSPCAQ43-100M	10	20%	0.182	1500	1500
PSPCAQ43-120M	12	20%	0.210	1400	1400
PSPCAQ43-150M	15	20%	0.235	1200	1200
PSPCAQ43-180M	18	20%	0.338	1000	1000
PSPCAQ43-220M	22	20%	0.378	900	900
PSPCAQ43-270M	27	20%	0.522	850	850
PSPCAQ43-330M	33	20%	0.540	800	800
PSPCAQ43-390M	39	20%	0.587	650	650
PSPCAQ43-470M	47	20%	0.844	610	610
PSPCAQ43-560M	56	20%	0.937	600	600
PSPCAQ43-680M	68	20%	1.117	550	550
PSPCAQ43-820M	82	20%	1.345	510	510
PSPCAQ43-101M	100	20%	1.520	490	490
PSPCAQ43-121M	120	20%	1.800	480	480
PSPCAQ43-151M	150	20%	2.000	460	460
PSPCAQ43-181M	180	20%	3.200	440	440
PSPCAQ43-221M	220	20%	3.400	400	400
PSPCAQ43-271M	270	20%	3.900	380	380
PSPCAQ43-331M	330	20%	5.300	330	330
PSPCAQ43-391M	390	20%	5.900	300	300
PSPCAQ43-471M	470	20%	6.800	250	230
PSPCAQ43-561M	560	20%	8.500	200	200
PSPCAQ43-681M	680	20%	10.000	180	180
PSPCAQ43-821M	820	20%	13.400	150	150
PSPCAQ43-102M	1000	20%	15.600	140	140
PSPCAQ43-222K	2200	10%	32	100	100



產品編碼 P/N	PSPCAQ32~105 series	測試設備 TEST INSTRUMENT	Chroma: 3302 16502
產品系列 Series	贴片非屏蔽功率电感	測試頻率 TEST FREQUENCY	100KHZ / 0.25V

CD53 Series

產品編碼 P/N	@ 25 °C Ambient Temperture				
	感值	公差	DCR	溫升電流 (IRMS)	飽和電流 (ISAT)
	Inductance	Tolerance	Ω	mA	mA
	μH	\pm	Max	$\Delta T \approx 40^\circ\text{C}$	L0 drop $\approx 20\%$
PSPCAQ53-1R0M	1.0	20%	0.030	4500	4500
PSPCAQ53-1R2M	1.2	20%	0.030	4200	4200
PSPCAQ53-1R5M	1.5	20%	0.030	4100	4100
PSPCAQ53-1R8M	1.8	20%	0.030	3700	3700
PSPCAQ53-2R2M	2.2	20%	0.030	3500	3500
PSPCAQ53-2R7M	2.7	20%	0.040	3200	3200
PSPCAQ53-3R3M	3.3	20%	0.050	2800	2800
PSPCAQ53-3R9M	3.9	20%	0.060	2600	2600
PSPCAQ53-4R7M	4.7	20%	0.070	2500	2500
PSPCAQ53-5R6M	5.6	20%	0.080	2400	2400
PSPCAQ53-6R8M	6.8	20%	0.090	2200	2200
PSPCAQ53-8R2M	8.2	20%	0.100	2000	2000
PSPCAQ53-100M	10	20%	0.120	1800	1800
PSPCAQ53-120M	12	20%	0.130	1750	1750
PSPCAQ53-150M	15	20%	0.150	1700	1700
PSPCAQ53-180M	18	20%	0.180	1600	1600
PSPCAQ53-220M	22	20%	0.220	1500	1500
PSPCAQ53-270M	27	20%	0.240	1400	1400
PSPCAQ53-330M	33	20%	0.300	1100	1100
PSPCAQ53-390M	39	20%	0.400	1000	1000
PSPCAQ53-470M	47	20%	0.430	900	900
PSPCAQ53-560M	56	20%	0.500	850	850
PSPCAQ53-680M	68	20%	0.600	800	800
PSPCAQ53-820M	82	20%	0.800	650	650
PSPCAQ53-101M	100	20%	0.900	600	600
PSPCAQ53-121M	120	20%	1.000	580	580
PSPCAQ53-151M	150	20%	1.300	430	430
PSPCAQ53-181M	180	20%	1.500	400	400
PSPCAQ53-221M	220	20%	2.000	380	380
PSPCAQ53-271M	270	20%	2.500	350	350
PSPCAQ53-331M	330	20%	3.200	280	280
PSPCAQ53-391M	390	20%	3.500	260	260
PSPCAQ53-471M	470	20%	4.200	200	200
PSPCAQ53-561M	560	20%	4.500	190	190
PSPCAQ53-681M	680	20%	6.000	180	180
PSPCAQ53-821M	820	20%	6.500	150	150
PSPCAQ53-102M	1000	20%	8.000	130	130



產品編碼 P/N	PSPCAQ32~105 series	測試設備 TEST INSTRUMENT	Chroma: 3302 16502
產品系列 Series	贴片非屏蔽功率电感	測試頻率 TEST FREQUENCY	100KHZ / 0.25V

CD54 Series

產品編碼 P/N	@ 25 °C Ambient Temperture				
	感值	公差	DCR	溫升電流 (IRMS)	飽和電流 (ISAT)
	Inductance	Tolerance	Ω	mA	mA
	μ H	\pm	Max	$\Delta T \approx 40^\circ\text{C}$	L0 drop $\approx 20\%$
PSPCAQ54-1R0M	1.0	20%	0.015	6000	6000
PSPCAQ54-1R2M	1.2	20%	0.02	5800	5200
PSPCAQ54-1R5M	1.5	20%	0.025	5500	4700
PSPCAQ54-1R8M	1.8	20%	0.03	4800	4000
PSPCAQ54-2R2M	2.2	20%	0.035	4500	3800
PSPCAQ54-2R7M	2.7	20%	0.04	4000	3400
PSPCAQ54-3R3M	3.3	20%	0.045	3800	3300
PSPCAQ54-3R9M	3.9	20%	0.05	3600	2900
PSPCAQ54-4R7M	4.7	20%	0.06	3400	2800
PSPCAQ54-5R6M	5.6	20%	0.07	3000	2400
PSPCAQ54-6R8M	6.8	20%	0.08	2700	2100
PSPCAQ54-8R2M	8.2	20%	0.09	2500	2000
PSPCAQ54-100M	10	20%	0.1	2000	1440
PSPCAQ54-120M	12	20%	0.12	1800	1400
PSPCAQ54-150M	15	20%	0.14	1700	1300
PSPCAQ54-180M	18	20%	0.15	1600	1230
PSPCAQ54-220M	22	20%	0.18	1400	1110
PSPCAQ54-270M	27	20%	0.2	1200	970
PSPCAQ54-330M	33	20%	0.23	1100	880
PSPCAQ54-390M	39	20%	0.32	1000	800
PSPCAQ54-470M	47	20%	0.37	900	720
PSPCAQ54-560M	56	20%	0.42	800	680
PSPCAQ54-680M	68	20%	0.46	700	610
PSPCAQ54-820M	82	20%	0.6	680	580
PSPCAQ54-101M	100	20%	0.7	650	520
PSPCAQ54-121M	120	20%	0.93	550	480
PSPCAQ54-151M	150	20%	1.1	500	400
PSPCAQ54-181M	180	20%	1.38	460	380
PSPCAQ54-221M	220	20%	1.57	400	350
PSPCAQ54-271M	270	20%	1.65	380	320
PSPCAQ54-331M	330	20%	1.7	320	280
PSPCAQ54-391M	390	20%	1.8	300	260
PSPCAQ54-471M	470	20%	2.3	280	230
PSPCAQ54-561M	560	20%	3	250	200
PSPCAQ54-681M	680	20%	3.9	230	190
PSPCAQ54-821M	820	20%	5	200	200
PSPCAQ54-102M	1000	20%	5.8	200	200
PSPCAQ54-152M	1500	20%	10	200	200
PSPCAQ54-222M	2200	20%	15	150	150



產品編碼 P/N	PSPCAQ32~105 series	測試設備 TEST INSTRUMENT	Chroma: 3302 16502
產品系列 Series	贴片非屏蔽功率电感	測試頻率 TEST FREQUENCY	100KHZ / 0.25V

CD75 Series

產品編碼 P/N	@ 25 °C Ambient Temperture				
	感值	公差	DCR	溫升電流 (IRMS)	飽和電流 (ISAT)
	Inductance	Tolerance	Ω	mA	mA
	μH	\pm	Max	$\Delta T \approx 40^\circ\text{C}$	L0 drop $\approx 20\%$
PSPCAQ75-1R0M	1.0	20%	0.013	8000	8000
PSPCAQ75-1R2M	1.2	20%	0.015	7500	7500
PSPCAQ75-1R5M	1.5	20%	0.023	6000	6000
PSPCAQ75-1R8M	1.8	20%	0.025	6000	6000
PSPCAQ75-2R2M	2.2	20%	0.028	5000	5000
PSPCAQ75-3R3M	3.3	20%	0.045	4500	4500
PSPCAQ75-4R7M	4.7	20%	0.058	3500	3500
PSPCAQ75-6R8M	6.8	20%	0.070	3200	3200
PSPCAQ75-100M	10	20%	0.070	2800	2800
PSPCAQ75-120M	12	20%	0.080	2500	2500
PSPCAQ75-150M	15	20%	0.090	2100	2100
PSPCAQ75-180M	18	20%	0.100	2000	2000
PSPCAQ75-220M	22	20%	0.110	1800	1800
PSPCAQ75-270M	27	20%	0.120	1600	1600
PSPCAQ75-330M	33	20%	0.130	1400	1400
PSPCAQ75-390M	39	20%	0.160	1300	1300
PSPCAQ75-470M	47	20%	0.180	1200	1200
PSPCAQ75-560M	56	20%	0.240	1000	1000
PSPCAQ75-680M	68	20%	0.280	950	950
PSPCAQ75-820M	82	20%	0.370	850	850
PSPCAQ75-101M	100	20%	0.430	800	800
PSPCAQ75-121M	120	20%	0.470	720	720
PSPCAQ75-151M	150	20%	0.640	650	650
PSPCAQ75-181M	180	20%	0.710	600	600
PSPCAQ75-221M	220	20%	0.960	550	550
PSPCAQ75-271M	270	20%	1.110	500	500
PSPCAQ75-331M	330	20%	1.260	450	450
PSPCAQ75-391M	390	20%	1.770	400	400
PSPCAQ75-471M	470	20%	1.960	380	380
PSPCAQ75-681M	680	20%	2.480	350	350
PSPCAQ75-821M	820	20%	3.400	300	300
PSPCAQ75-102M	1000	20%	4.000	250	250
PSPCAQ75-222M	2200	20%	9.000	200	200



產品編碼 P/N	PSPCAQ32~105 series	測試設備 TEST INSTRUMENT	Chroma: 3302 16502
產品系列 Series	贴片非屏蔽功率电感	測試頻率 TEST FREQUENCY	100KHZ / 0.25V

CD105 Series

產品編碼 P/N	@ 25 °C Ambient Temperture				
	感值	公差	DCR	溫升電流 (IRMS)	飽和電流 (ISAT)
	Inductance	Tolerance	Ω	mA	mA
	μH	\pm	Max	$\Delta T \approx 40^\circ\text{C}$	L0 drop $\approx 20\%$
PSPCAQ105-1R0M	1.0	20%	0.01	16000	16000
PSPCAQ105-1R5M	1.5	20%	0.02	12000	12000
PSPCAQ105-2R2M	2.2	20%	0.02	10000	10000
PSPCAQ105-3R3M	3.3	20%	0.03	8000	8000
PSPCAQ105-4R7M	4.7	20%	0.03	6000	6000
PSPCAQ105-6R8M	6.8	20%	0.04	5000	5000
PSPCAQ105-100M	10	20%	0.06	4500	4500
PSPCAQ105-150M	15	20%	0.08	4000	4000
PSPCAQ105-220M	22	20%	0.1	3000	3000
PSPCAQ105-330M	33	20%	0.12	2800	2800
PSPCAQ105-470M	47	20%	0.17	1800	1800
PSPCAQ105-560M	56	20%	0.19	1600	1600
PSPCAQ105-680M	68	20%	0.22	1400	1400
PSPCAQ105-820M	82	20%	0.25	1300	1300
PSPCAQ105-101M	100	20%	0.35	1200	1200
PSPCAQ105-151M	150	20%	0.47	1000	1000
PSPCAQ105-181M	180	20%	0.63	900	900
PSPCAQ105-221M	220	20%	0.73	800	800
PSPCAQ105-271M	270	20%	0.97	750	750
PSPCAQ105-331M	330	20%	1.15	700	700
PSPCAQ105-391M	390	20%	1.3	650	650
PSPCAQ105-471M	470	20%	1.48	600	600
PSPCAQ105-561M	560	20%	1.9	550	550
PSPCAQ105-681M	680	20%	2.25	500	500
PSPCAQ105-821M	820	20%	2.55	450	450
PSPCAQ105-102M	1000	20%	3	420	420
PSPCAQ105-222M	2200	20%	5.5	400	400
PSPCAQ105-302M	3000	20%	12	250	250

- ◎ 規格內參數基於環境溫度25°C取得
All test Data is referenced to 25°C ambient
- ◎ 電感工作環境溫度：-25°C ~ 105°C
Operating temperature range -25 °C to +105 °C
- ◎ 加載溫升電流 (Irms) 會使電感溫度上升大約 40°C (電感初始溫度+上升溫度=電感最終溫度)
Typical Irms would cause an approximately ΔT of 40°C
- ◎ 加載飽和電流 (ISAT) 會使感量下降大約30%
Typical ISAT would cause Lo to drop approximately 30%.
- ◎ 請從溫升電流 (IRMS) 和飽和電流 (ISAT) 中選取一個最小值作為額定電流
Choose a minimum of IRMS and ISAT as the rated current
- ◎ 務必考慮最終的產品設計，元器件佈局，線路板走線，以及使用環境過程中，電感最終溫度不得超過105°C
The operating temperature of inductance do not exceed 105°C
- ◎ 使用電感時，請查閱第13頁注意事項
The announcements is on page 14

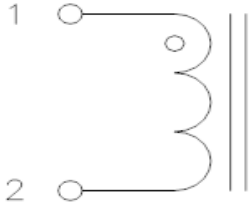


特性 CHARACTERISTICS



產品編碼 P/N	PSPCAQ32~105 series	測試設備 TEST INSTRUMENT	Chroma: 3302 16502
產品系列 Series	贴片非屏蔽功率电感	測試頻率 TEST FREQUENCY	100KHZ / 0.25V

電路結構 Connections



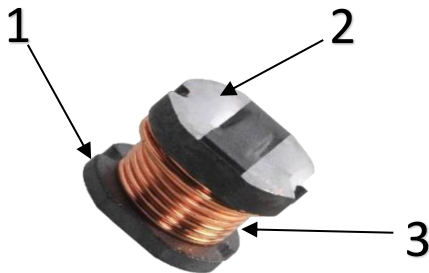
◎ 電感內置一組線圈
Inductor Contents one (1) Set(s) of Coil

印字方式 Marking



◎ 产品顶部使用黑色喷码印字
MARKING: black XXX

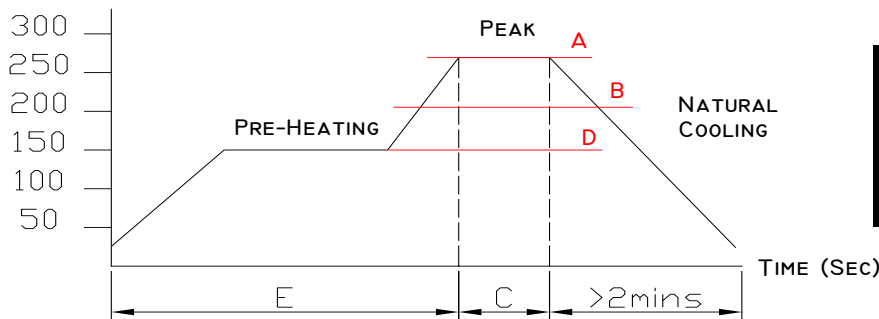
內部構造 Internal Structure



- 1: 磁芯 / Core
- 2: 電極 / Electrode
- 3: 線圈 / coil

焊接溫度（推荐） Recommended Soldering Temperature Graph

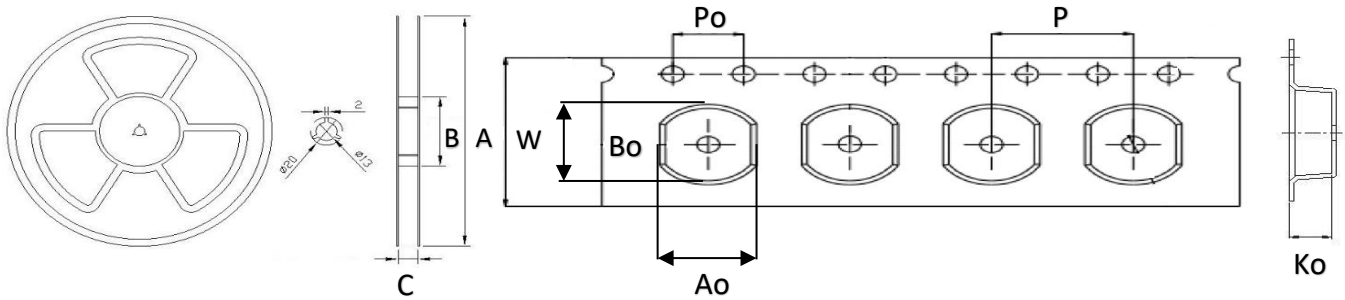
TEMPERATURE (°C)



產品編碼 P/N	PSPCAQ32~105 series	測試設備 TEST INSTRUMENT	Chroma: 3302 16502
產品系列 Series	贴片非屏蔽功率电感	測試頻率 TEST FREQUENCY	100KHZ / 0.25V

載帶卷盤尺寸 : (mm)

Packing Dimension



系列 Series	A	B	C	W	P	Po	Ao	Bo	Ko
CD32	330	100	12.5	12	8	4	3.2 Typ	3.6 Typ	2.3 Typ
CD43	330	100	12.5	12	8	4	4.0 Typ	4.6 Typ	3.6 Typ
CD53	330	100	12.5	12	8	4	5.5 Typ	5.95 Typ	3.3 Typ
CD54	330	100	12.5	12	8	4	5.5 Typ	5.95 Typ	4.8 Typ
CD75	330	100	16.5	16	12	4	7.35 Typ	8.05 Typ	5.45 Typ
CD105	330	100	16.5	24	12	4	9.4 Typ	10.35Typ	5.6 Typ



產品編碼 P/N	PSPCAQ32~105 series	測試設備 TEST INSTRUMENT	Chroma: 3302 16502
產品系列 Series	贴片非屏蔽功率电感	測試頻率 TEST FREQUENCY	100KHZ / 0.25V

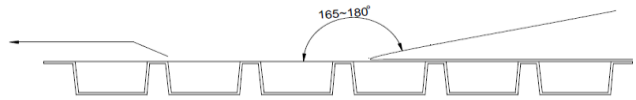
載帶內產品排列方式:
Inductance Packing Method

載帶剝離力:
Typical Pulling Force

尾字對孔

The last mark is on the side of the gear hole

20~120 gf

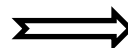
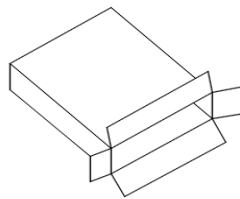


裝箱數量:
Package Quantity

卷盘
MPQ

内盒
Middle box

外箱
Outer box



系列 Series	卷盘 MPQ	内盒 Middle box	外箱 Outer box
CD32	3000pcs	9000pcs	27000pcs
CD43	2000pcs	6000pcs	18000pcs
CD53	2000pcs	6000pcs	18000pcs
CD54	1500pcs	4500pcs	13500pcs
CD75	1000pcs	3000pcs	9000pcs
CD105	1000pcs	3000pcs	9000pcs





注意事項

使用本產品時，請注意以下事項

- ◎ 產品保存期限為12個月，保存條件：溫度5~40℃，濕度10~75%RH以內，超過保存期限可能會使產品端子電極發生氧化。
- ◎ 請勿在極端環境下使用和保存（高鹽，強酸，強鹼，強輻射等）。
- ◎ 產品焊接前，請進行預熱；預熱溫度與焊接溫度之間溫差建議控制在150℃以內。
- ◎ 產品焊接後需重新拆卸焊接修正時，請遵循規格書規定的條件範圍；過高的加熱溫度以及反復的拆卸可能會導致產品失效。
- ◎ 產品請勿接觸清洗劑，酒精等液體，這會侵蝕產品本體，從而導致產品失效。
- ◎ 產品焊接到線路板後，請注意不可因線路板整體變形或局部變形而施加給電感剩餘應力，這可能會導致電感發生破裂，脫落，以致失效。
- ◎ 產品通電後溫度會隨電流的增大而上升，設計時請務必考慮留有餘量。
- ◎ 過高的靜電會對產品產生永久性損害，請注意靜電防護。
- ◎ 產品通電過程請勿觸摸產品任何部位，防止觸電。
- ◎ 本產品作為磁性產品，設計時請務必考慮周邊元器件與本產品可能產生的相互影響。
- ◎ 本產品適用於一般電子設備，如：AV設備，通信設備，家電產品，娛樂設備，電腦設備，個人設備，辦公設備，計測設備，工業機器人等。且該一般電子設備需在常規的操作和使用方法環境下使用。對於需要高度安全性和可靠性的，或者因本產品失效造成設備故障，誤操作，運轉不良等危及到人的生命身體及財產安全，以及對社會產生較大不良影響的特殊用途，設計使用前務必同本公司溝通，設計使用者如未取得我司書面同意狀況下使用造成任何後果，我司不予承擔。特殊用途包含但不限定如下清單：
 - 1 軍用設備
 - 2 運輸設備（汽車，軌道交通產品，船舶等）
 - 3 航空，航太設備
 - 4 發電控制設備
 - 5 核動力相關設備
 - 6 爆炸引燃控制設備
 - 7 交通控制設備
 - 8 關係到國防安全的設備
 - 9 其他被認定為特殊用途的設備





ANNOUNCEMENTS

Please read this before using the product.

- © The product storage life is 12 months, Storage Temperature: TEMP.5~40°C; RH10%~75%. Please use the product within the warranty period
- © Do not use or store in locations where there are conditions such as gas corrosion (salt, acid, alkali, radiation etc.) .
- © Before soldering, be sure to preheat components:The preheating temperature should be set so that The temperature difference between the solder temperature and chip temperature does not exceed 150° C.
- © Soldering corrections after mounting should be within the range of the conditions determined in the specifications. If overheated, a short circuit, performance deterioration, or lifespan shortening may occur. Repeated disassembly may invalidate the inductance
- © The cleaning agent can not be used for these products. This may corrode the inductor
- © When embedding a printed circuit board where a chip is mounted to a set, be sure that residual stress is not given to the chip due to the overall distortion of the printed circuit board and partial distortion such as at screw tightening portions.
- © Self heating (Rated Current or Irms) occurs when the power is turned ON, so the tolerance should be sufficient for the set thermal design.
- © Too high static electricity will cause permanent damage to the product, please pay attention to electrostatic protection.
- © As a magnetic product, the design must consider the possible interaction between peripheral components and the product.
- © The products listed on this catalog are intended for use in general electronic equipment (AV equipment, telecommunications equipment, home appliances, amusement equipment, computer equipment, personal equipment, office equipment, measurement equipment, industrial robots) under a normal operation and use condition.
The products are not designed or warranted to meet the requirements of the applications listed below, whose performance and/or quality require a more stringent level of safety or reliability, or whose failure, malfunction or trouble could cause serious damage to society, person or property.
If you intend to use the products in the applications listed below or if you have special requirements exceeding the range or conditions set forth in the each catalog, please contact PROD. Otherwise, PROD will not bear the serious consequences caused by product quality problems

- | | |
|--|---|
| 1 Military equipment | 8 Medical equipment |
| 2 Transportation equipment (cars, trains, ships, etc.) | 9 Other applications that are not considered general-purpose applications |
| 3 Aerospace/aviation equipment | |
| 4 Power-generation control equipment | |
| 5 Atomic energy-related equipment | |
| 6 Explosive ignition control equipment | |
| 7 Transportation control equipment | |

