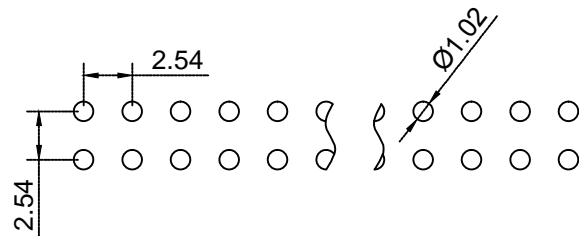
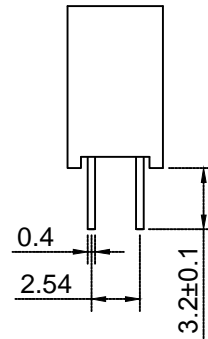
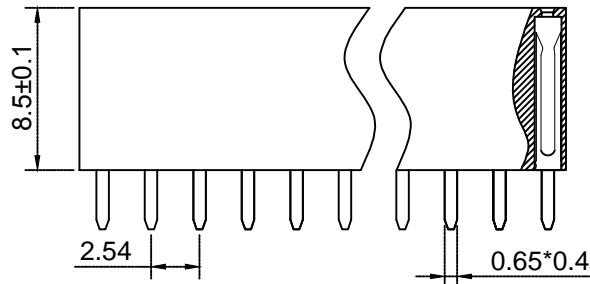
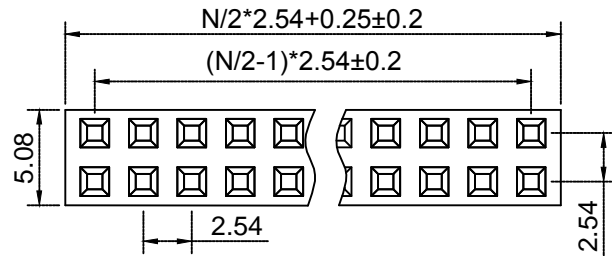




N=PIN数



P.C.B LAYOUT

Material材料

Insulator 塑胶: PBT (UL 94V-0)

Contact 端子: Brass 黄铜

Contact plating 表面镀层: Au or Sn over 50u" Ni
里镍外金 or 锡

Electrical Characteristics 电气特性

Current rating 额定电流: 2.5Amps

Dielectric Withstanding Voltage 耐压:

AC 1000V for 1 Minute.

Insulator Resistance 绝缘电阻: 1000MΩ Min.

Contact Resistance 接触电阻: 20MΩ Max.

Operating Temperature 工作温度: -40°C ~ +105°C

Max. Processing Temp 瞬时温度:

120°C for 30-60 seconds

(120°C for 10 seconds)

未注尺寸公差			PM 2.54 2*N		上海洲日电子有限公司			
尺寸	公差				Shanghai Zhouri Electronics CO.,LTD			
X.	±0.3	±5°			上海康司玛电子设备进出口有限公司			
X.X	±0.2	±3°			Shanghai KangSiMa Eletronic Equipment			
X.XX	±0.15				import and export Co.,LTD			
制图	周元金	201171018	图纸编号	ZR20171018-292	TEL:86-21-34975176/51571121			
审核	张海娜	201171018	物料编号		1:1	mm	图幅	A4
核准	章妹	201171018	第三视角					