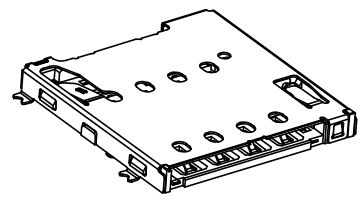
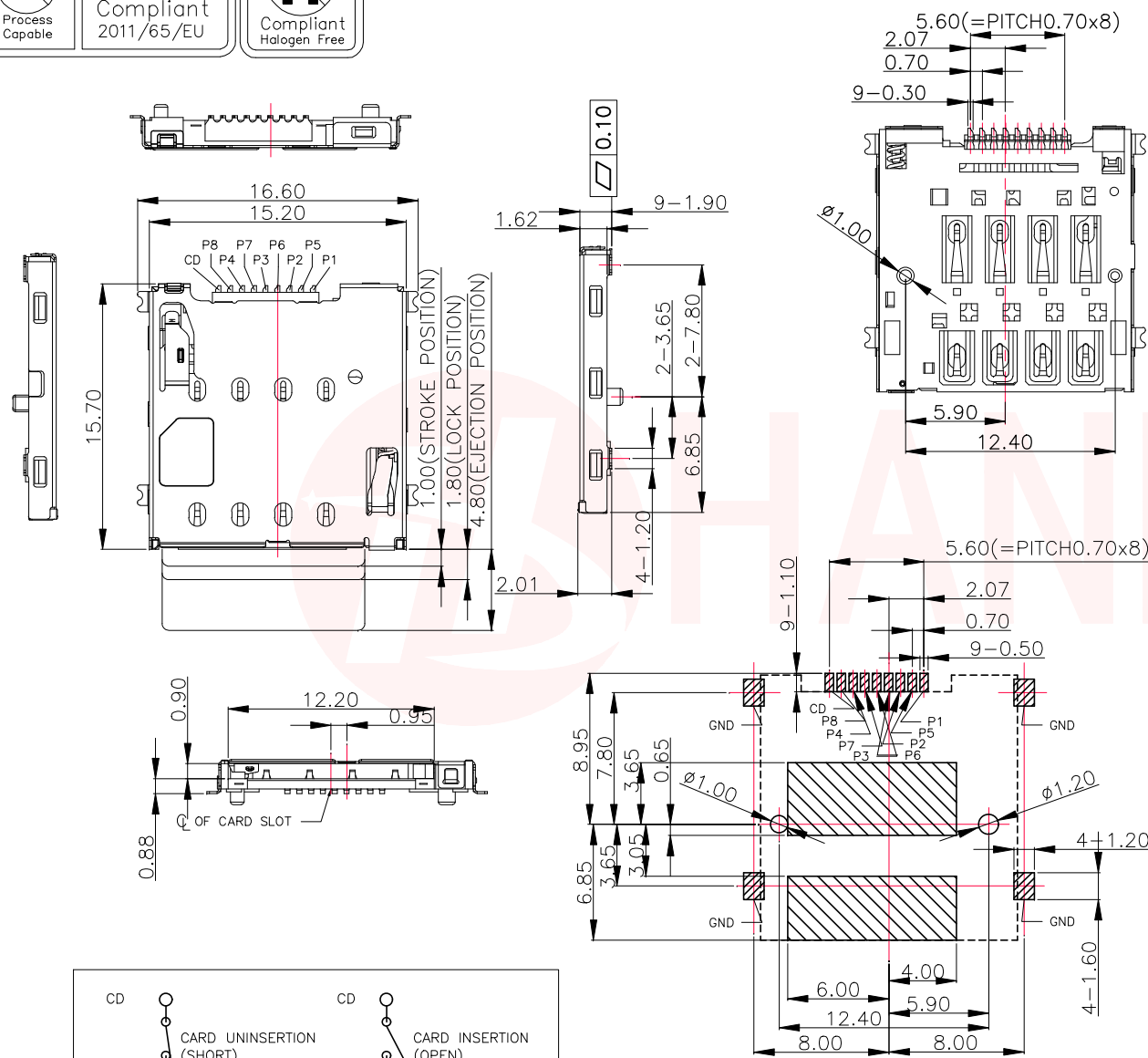




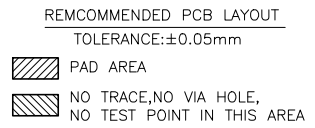
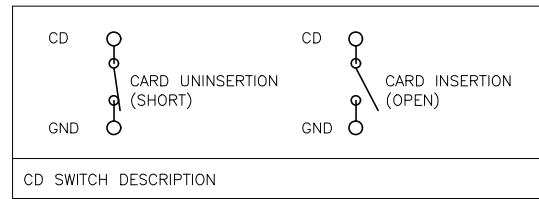
REV.	ECN NO OR DESCRIPTION	REVISED	DATE



- NOTES :
- MATERIAL :
 - HOUSING/SLIDER:LCP UL94 V-0, BLACK COLOR.
 - SHELL: SUS304-H,T=0.12mm
 - CONTACT: C5210-EH T=0.12mm
 - FINISH :
 - CONTACT: Au 1-3u" ON CONTACT AREA, Au 1u"MIN ON SOLDERTAIL AREA.
 - SHELL: 30u" MIN NICKEL PLATING OVERALL. Au 1u"MIN ON SOLDERTAIL AREA.
 - "⊗" SHOWS FAI MEASUREMENT ITEMS.
 - "⊙" SHOWS QIP INSPECTION ITEMS.
 - LOW HALOGEN SPECIFICATION
 CHLORINE(CL): 750 ppm MAX.
 BROMINE(BR): 750 ppm MAX.
 CL + BR : 1200 ppm MAX.

PIN ASSIGNMENTS

PIN NO.	Pin NO.
P1	VCC:PWR single and GND
P2	RST:Reset signal
P3	CLK:Clocking signal
P4	Reserved
P5	GND:PWR single and GND
P6	VPP: programming Voltage
P7	I/O:serial date input/output
P8	Reserved



UNLESS OTHERWISE SPECIFIED TOLERANCES

DECIMALS:	ANGLES:
X :±0.50	X :±2°
X.X :±0.25	X.X :±1°
X.XX :±0.15	

东莞市汉博电子科技有限公司
DONGGUAN HANBO TECHNOLOGY CO., LTD

TITLE	MICRO SIM PUSH H2.01		
DWN	xiong	PART NO. SMO-1640	
CHKD	lee	SCALE:1:1	UNIT: mm
APVD	wang	SIZE: A4	SHEET:10F 1
REV: A4			
CUSTOMER COPY			